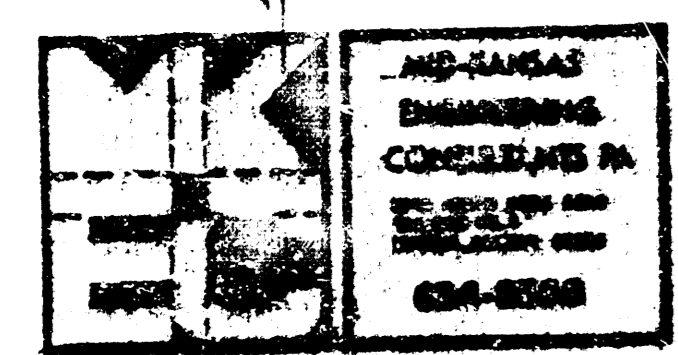
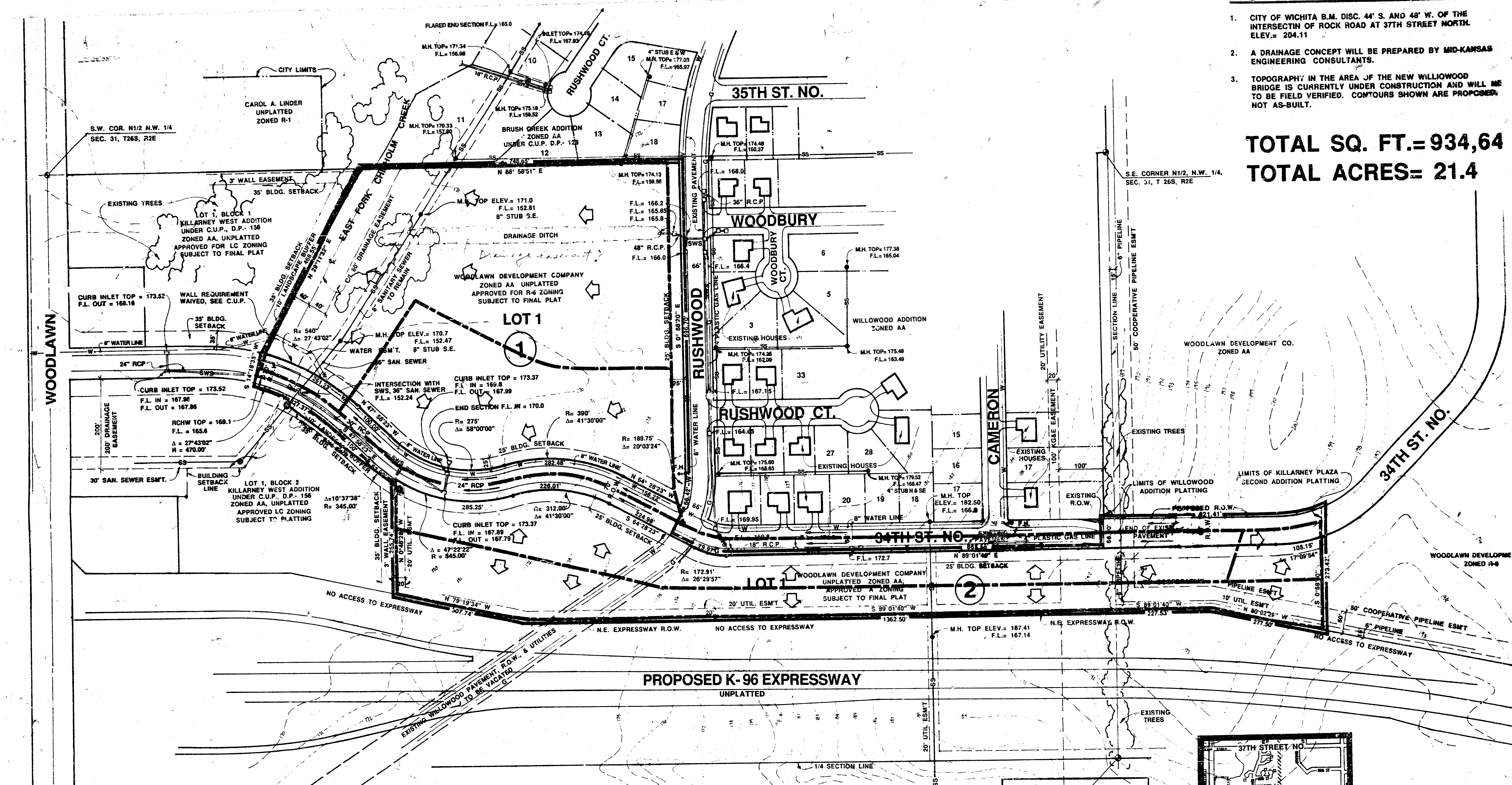


**NOTES :**

1. CITY OF WICHITA B.M. DISC. 44" S. AND 48" W. OF THE INTERSECTION OF ROCK ROAD AT 37TH STREET NORTH ELEV.= 204.11
2. A DRAINAGE CONCEPT WILL BE PREPARED BY MID-KANSAS ENGINEERING CONSULTANTS.
3. TOPOGRAPHY IN THE AREA OF THE NEW WILLIWOOD BRIDGE IS CURRENTLY UNDER CONSTRUCTION AND WILL BE TO BE FIELD VERIFIED. CONTOURS SHOWN ARE PROPOSED, NOT AS-BUILT.

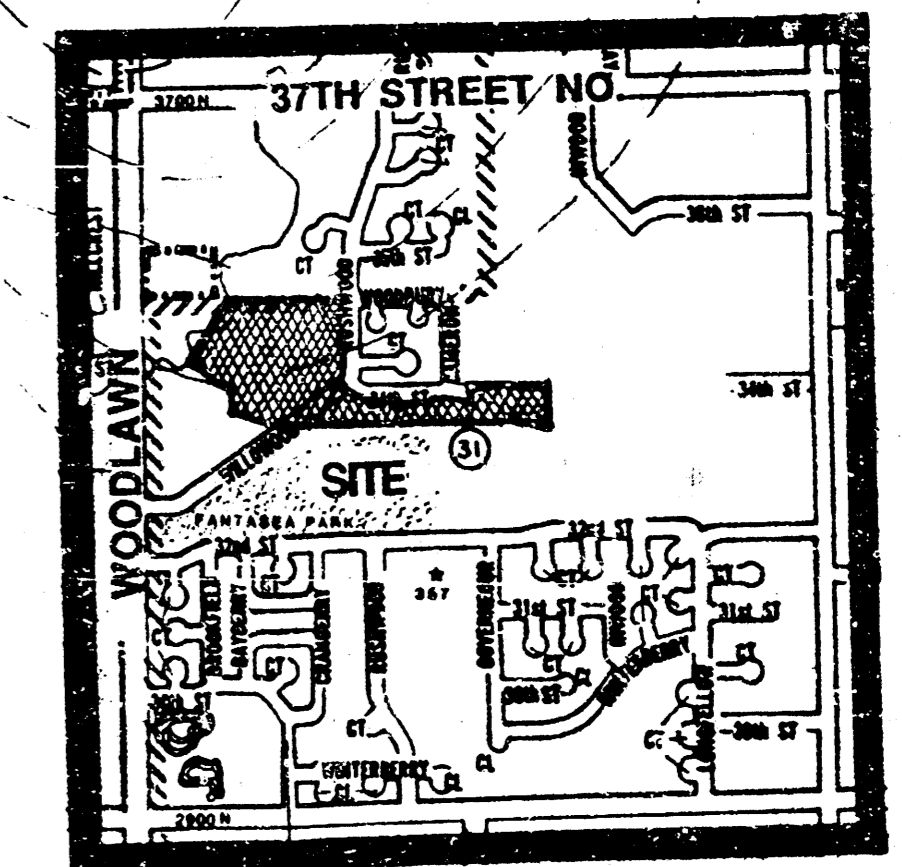
**TOTAL SQ. FT.= 934,64**  
**TOTAL ACRES= 21.4**



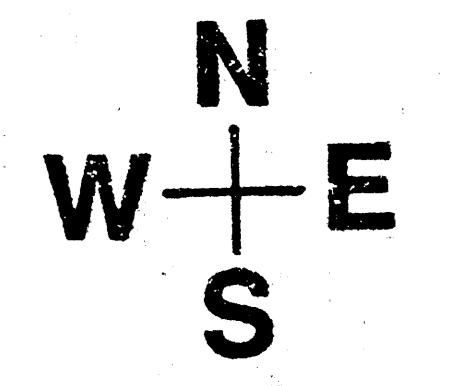
**DRAINAGE & UTILITY PLAN**

# KILLARNEY WEST RESIDENTIAL

**APPROVED DRAINAGE PLAN**



**LOCATION MAP**  
NO SCALE



SCALE: 1"= 100'-0"  
CONTOUR INTERVAL= 1'