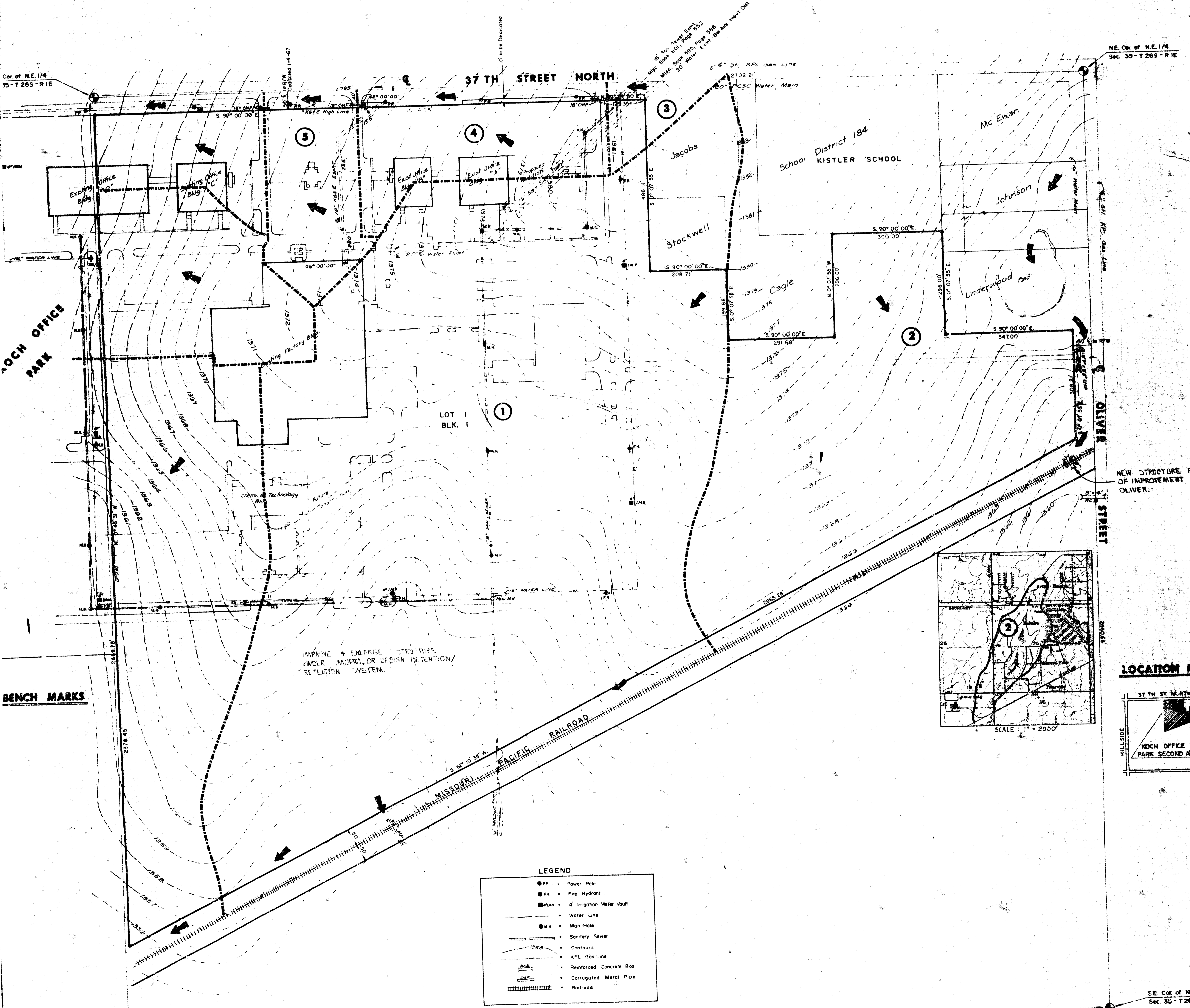
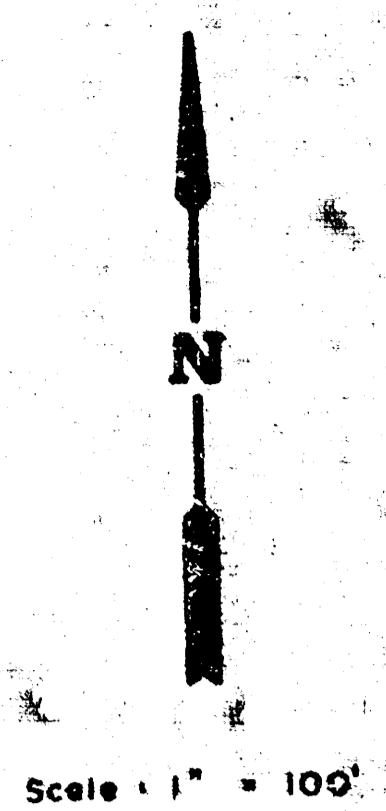


KOCH OFFICE PARK SECOND ADDITION

AN ADDITION TO WICHITA, SEDGWICK COUNTY, KANSAS

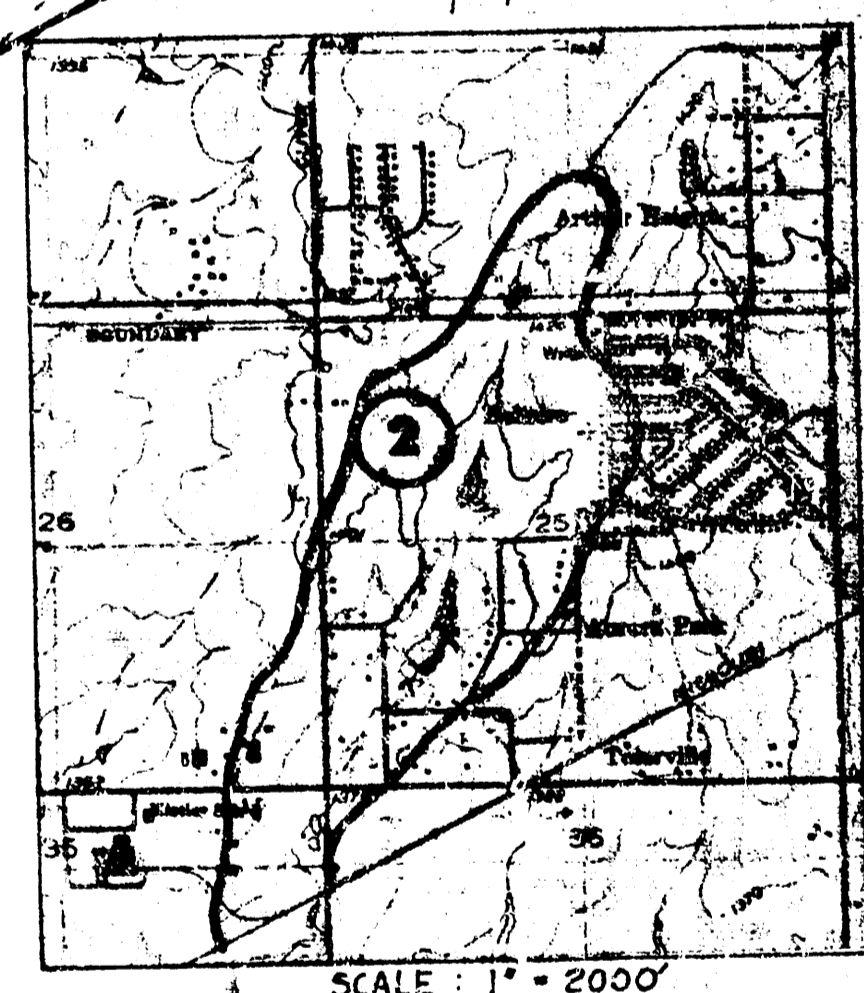


IMPROVE + ENLARGE EXISTING UNDER MAINS, OR DESIGN DETENTION/RETENTION SYSTEM.

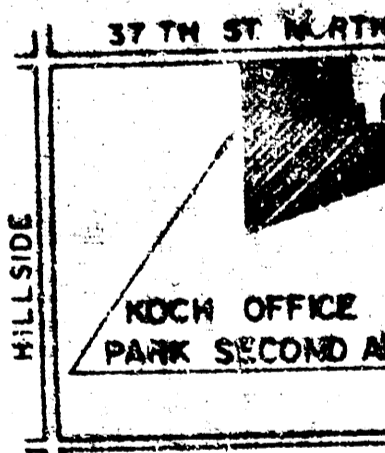
BENCH MARKS

LEGEND

| | |
|---|---------------------------|
| ● | Power Pole |
| ⊙ | Fire Hydrant |
| ■ | 4" Irrigation Water Vault |
| — | Water Line |
| ⊕ | Man Hole |
| — | Sanitary Sewer |
| — | Contours |
| — | KPL Gas Line |
| — | Reinforced Concrete Box |
| — | Corrugated Metal Pipe |
| — | Railroad |



LOCATION MAP



OWNER:
 KOCH INDUSTRIES, INC.
 4111 E. 37TH ST. NORTH
 WICHITA, KANSAS 67220
 PH. 832-5500

DRAINAGE & UTILITY PLAN
KOCH OFFICE PARK SECOND ADDITION

AID-KANSAS ENGINEERING CONSULTANTS PA
 3300 NORTH ROCK ROAD
 BLDG. DING #800
 WICHITA, KANSAS 67226 682-6364