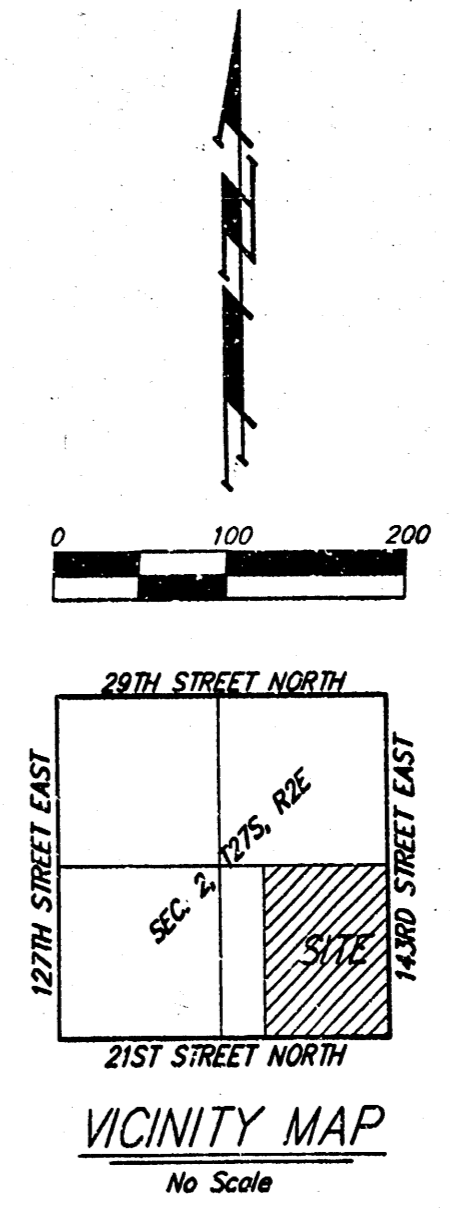
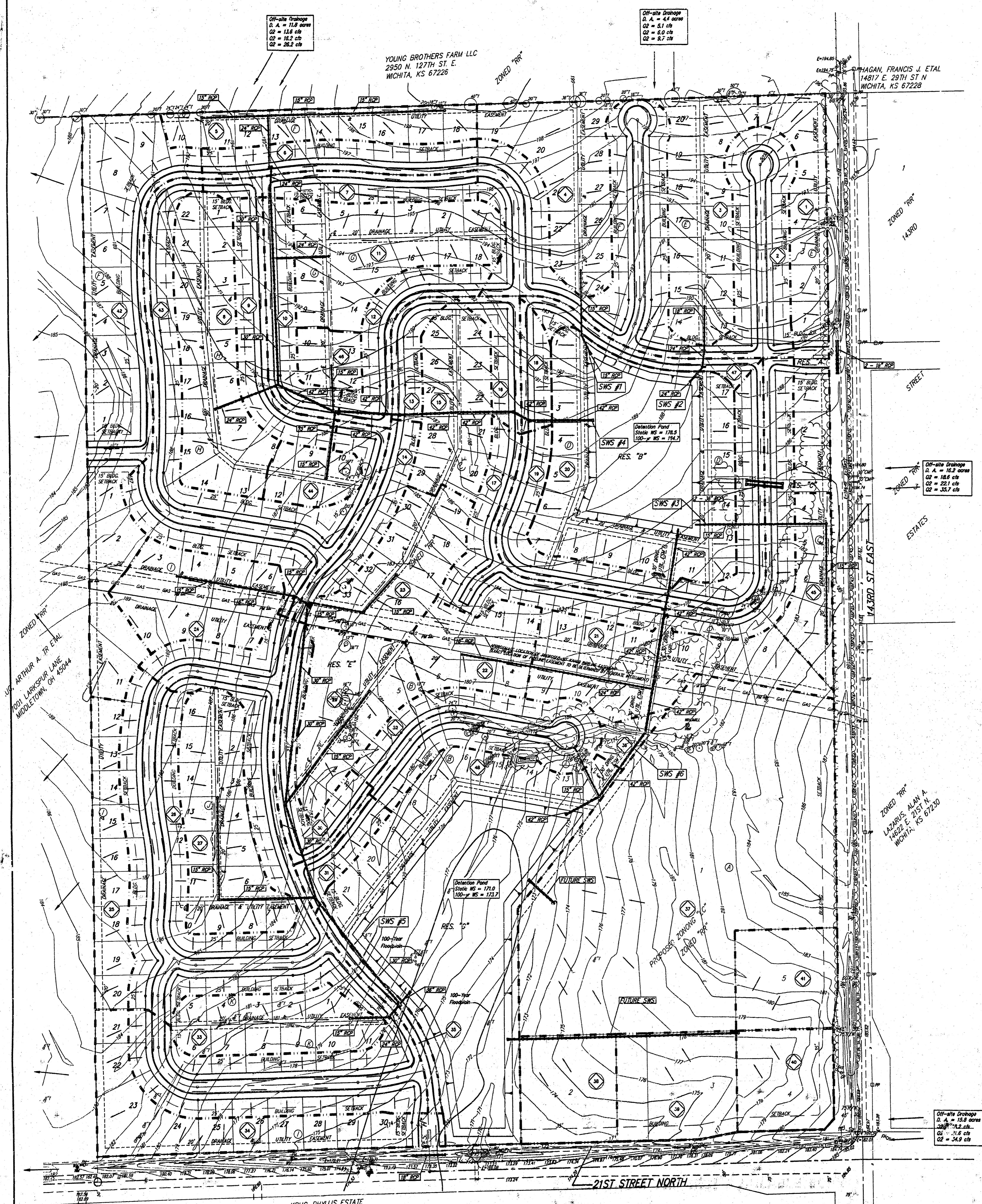


DRAINAGE PLAN KRUG NORTH ADDITION WICHITA, SEDGWICK COUNTY, KANSAS



- LEGEND**
- Path Delimiter
 - ⊙ Basin Identifier
 - General Flow Direction
 - ⊥ Catch Basin
 - Drop Inlet
 - Storm Water Sewer

KRUG NORTH ADDITION - STORMWATER FLOWS

BASIN #	BASIN AREA (acres)	Time of Concentration (min)	RUNOFF COEFFICIENTS			PEAK FLOWRATE		
			2-yr C	5-yr C	100-yr C	2-yr cfs	5-yr cfs	100-yr cfs
1	2.3	15	0.50	0.54	0.78	4.3	5.8	12.7
2	5.7	15	0.50	0.54	0.78	10.9	14.1	32.0
3	2.5	15	0.50	0.54	0.78	4.8	6.1	13.9
4	2.3	15	0.50	0.54	0.78	4.3	5.8	12.8
5	1.6	15	0.50	0.54	0.78	3.1	4.0	8.0
6	1.1	15	0.50	0.54	0.78	2.1	2.7	5.1
7	4.8	15	0.50	0.54	0.78	9.2	11.8	26.9
8	2.9	15	0.50	0.54	0.78	5.6	7.2	16.1
9	1.1	15	0.50	0.54	0.78	2.1	2.8	6.1
10	1.1	15	0.50	0.54	0.78	2.2	2.8	6.1
11	2.8	15	0.50	0.54	0.78	5.1	6.9	15.6
12	1.1	15	0.50	0.54	0.78	2.1	2.8	6.1
13	0.6	15	0.50	0.54	0.78	1.1	1.5	3.1
14	0.9	15	0.50	0.54	0.78	1.7	2.2	5.0
15	1.9	15	0.50	0.54	0.78	3.7	4.7	10.7
16	0.6	15	0.50	0.54	0.78	1.2	1.5	3.1
17	1.4	15	0.50	0.54	0.78	2.5	3.4	7.9
18	0.5	15	0.50	0.54	0.78	0.9	1.2	2.7
19	2.5	15	0.50	0.54	0.78	4.2	5.1	11.9
20	1.0	15	0.50	0.54	0.78	3.8	5.0	11.3
21	2.9	15	0.50	0.54	0.78	5.5	7.1	16.1
22	1.5	15	0.50	0.54	0.78	2.8	3.6	8.1
23	2.0	15	0.50	0.54	0.78	3.9	5.0	11.3
24	2.1	15	0.50	0.54	0.78	3.9	5.1	11.5
25	0.3	15	0.50	0.54	0.78	0.2	0.3	0.7
26	0.3	15	0.50	0.54	0.78	0.2	0.3	0.7
27	2.4	15	0.50	0.54	0.78	4.7	6.0	13.7
28	N/A	N/A	N/A	N/A	N/A	N/A	N/A	N/A
29	2.1	15	0.50	0.54	0.78	4.0	5.2	11.8
30	1.2	15	0.50	0.54	0.78	2.4	3.0	6.9
31	0.2	15	0.50	0.54	0.78	0.1	0.1	0.3
32	2.4	15	0.50	0.54	0.78	4.5	5.8	13.2
33	1.8	15	0.50	0.54	0.78	3.5	4.6	10.9
34	0.4	15	0.50	0.54	0.78	0.2	0.3	0.7
35	0.4	15	0.50	0.54	0.78	0.2	0.3	0.7
36	0.3	15	0.50	0.54	0.78	0.2	0.3	0.7
37	12.0	15	0.50	0.54	0.78	23.0	29.5	67.2
38	1.5	15	0.50	0.54	0.78	2.8	3.7	8.5
39	1.9	15	0.50	0.54	0.78	3.6	4.7	10.6
40	1.4	15	0.50	0.54	0.78	2.7	3.6	8.0
41	1.5	15	0.50	0.54	0.78	2.8	3.7	8.4
42	4.2	15	0.50	0.54	0.78	8.1	10.4	23.7
43	1.7	15	0.50	0.54	0.78	3.1	4.1	9.6
44	0.2	15	0.50	0.54	0.78	0.1	0.1	0.3
45	1.0	15	0.50	0.54	0.78	2.0	2.6	5.8
46	0.3	15	0.50	0.54	0.78	0.2	0.3	0.7
47	0.2	15	0.50	0.54	0.78	0.1	0.1	0.3
48	0.2	15	0.50	0.54	0.78	0.1	0.1	0.3
49	0.2	15	0.50	0.54	0.78	0.1	0.1	0.3

MINIMUM BUILDING FLOOR ELEVATIONS FOR LOWEST OPENING TO THE STRUCTURES

LOT	BLOCK	ELEVATION CITY DATUM
1-17	H	186.0
3-4	I	187.0
46-54	I	175.0

REMARKS:
 1. Elevation of base of building at RBC north side of 21st St. N.
 Elev. = 172.23 City Datum

KRUG, PHYLLIS ESTATE
 7001 LARKSPUR LANE
 MIDDLETOWN, OK 73044
 ZONED "SF-20"

Off-site Drainage
 0.4 = 16.8 acres
 0.2 = 8.4 acres
 0.2 = 8.0 cfs
 0.2 = 8.0 cfs

Off-site Drainage
 0.4 = 16.8 acres
 0.2 = 8.4 acres
 0.2 = 8.0 cfs
 0.2 = 8.0 cfs

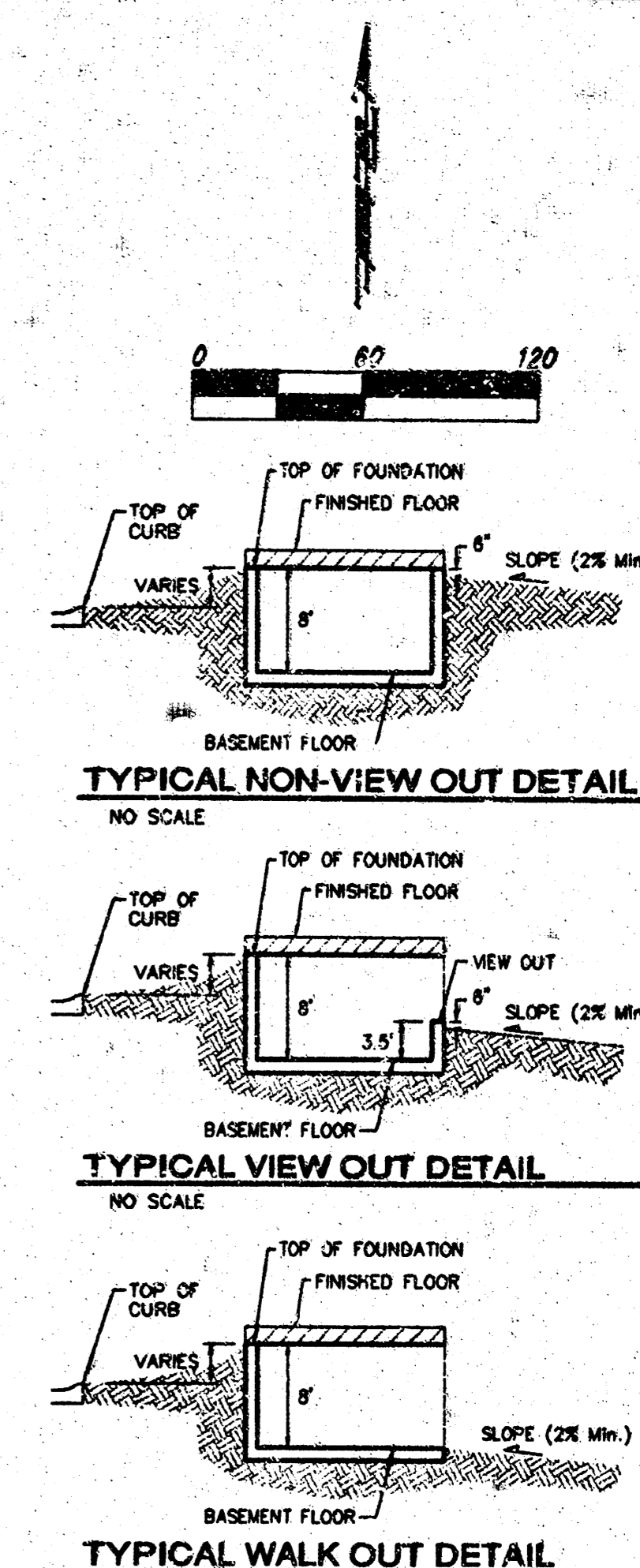
YOUNG BROTHERS FARM LLC
 2950 N. 127TH ST. E.
 WICHITA, KS 67226

PHAGAN, FRANCIS J. ETAL
 14817 E. 28TH ST N
 WICHITA, KS 67228

Retention Pond
 0.4 = 17.0
 100-yr BS = 17.1

Retention Pond
 0.4 = 17.0
 100-yr BS = 17.1

Off-site Drainage
 0.4 = 16.8 acres
 0.2 = 8.4 acres
 0.2 = 8.0 cfs
 0.2 = 8.0 cfs



- NOTES:**
1. PROPOSED TOP OF FOUNDATION ELEVATIONS ARE SHOWN ON PLANS. CONTRACTOR TO SET FINISHED FLOOR AND GARAGE FLOOR ELEVATIONS. ALL STREET ELEVATIONS SHOWN ON PLANS ARE FOR TOP OF CURB (FULL-HEIGHT).
 2. THIS GRADING PLAN IS DESIGNED WITH VIEW-OUTS AND WALK-OUTS. ELEVATIONS SHOWN AS XXX V.O. DEPICT VIEW-OUT STRUCTURES. ELEVATIONS SHOWN AS XXX W.O. DEPICT WALK-OUT STRUCTURES.

3. ALL LOTS SHALL MEET MINIMUM PAD REQUIREMENT AS SHOWN ON THE RECORDED PLAN.

LOT	BLOCK	ELEVATION CITY DATUM
1-17	H	186.0
3-4	I	187.0
46-54	I	175.0

4. LOT DIMENSIONS HAVE BEEN LIMITED ON THIS PLAN. REFER TO THE RECORDED PLAN FOR FINAL DIMENSION, EASEMENT, & BUILDING SETBACK INFORMATION.
5. HOUSE PAD ELEVATIONS DEPICTED WITH BOLD OUTLINES WITH TOP OF FOUNDATIONS SHOWN AS XXX T.F. INDICATE THAT DEEP FOUNDATIONS OR DEEP FOUNDATIONS MAY BE REQUIRED.
6. A DRAINAGE PLAN HAS BEEN DEVELOPED FOR THIS SUBDIVISION AND IS ON FILE WITH THE CITY OF WICHITA, KANSAS. DRAINAGE INTENT SHALL REMAIN AS DEPICTED OR AS MODIFIED WITH THE APPROVAL OF THE CITY ENGINEER OF THE CITY OF WICHITA, KANSAS. NO OBSTRUCTIONS WHICH IMPED THE FLOW OF THIS DRAINAGE PLAN SHALL BE ALLOWED.
7. ALL ELEVATIONS SHOWN ARE CITY OF WICHITA DATUM.
8. NO BUILDING PERMITS ARE TO BE ISSUED FOR ANY LOTS THAT ARE LOCATED IN THE SPECIAL FLOOD HAZARD AREA WITHIN THIS PLATTED SUBDIVISION UNLESS ONE OF THE FOLLOWING CONDITIONS ARE MET:
 - A. THE LOWEST FLOOR (INCLUDING BASEMENT) IS CONSTRUCTED A MINIMUM OF 1 FOOT ABOVE THE DETERMINED BASE FLOOD ELEVATION.
 - OR
 - B. A LETTER OF MAP REVISION (LMR) IS ISSUED BY THE FEDERAL EMERGENCY MANAGEMENT AGENCY (FEMA) REMOVING THE SUBJECT PROPERTY FROM THE SPECIAL FLOOD HAZARD AREA, WHICH WOULD THEN ALLOW BUILDINGS TO BE CONSTRUCTED WITH THE LOWEST OPENING AS SPECIFIED ON THIS GRADING PLAN AND MEETING FEMA TECHNICAL BULLETIN 10-01.
9. ALL LOTS LISTED BELOW SHALL MEET THE CONDITIONS SPECIFIED IN FEMA TECHNICAL BULLETIN 10-01.

KRUG NORTH ADDITION PH. 1
GRADING PLAN
WICHITA, KANSAS

BAUGHMAN COMPANY P.A.
ENGINEERING, SURVEYING, & PLANNING
318-262-7271 • 316 ELLIS • WICHITA, KANSAS 67211

PROJECT NUMBER: _____ SHEET: **2** OF **2**

DESIGN: _____ DRAWN: _____ APPROVED: _____ DATE: 02/04 SCALE: noted

BENCHMARK:
□ top of headwall of RCBC north side of 2nd St. N.
Elev = 173.23 City Datum