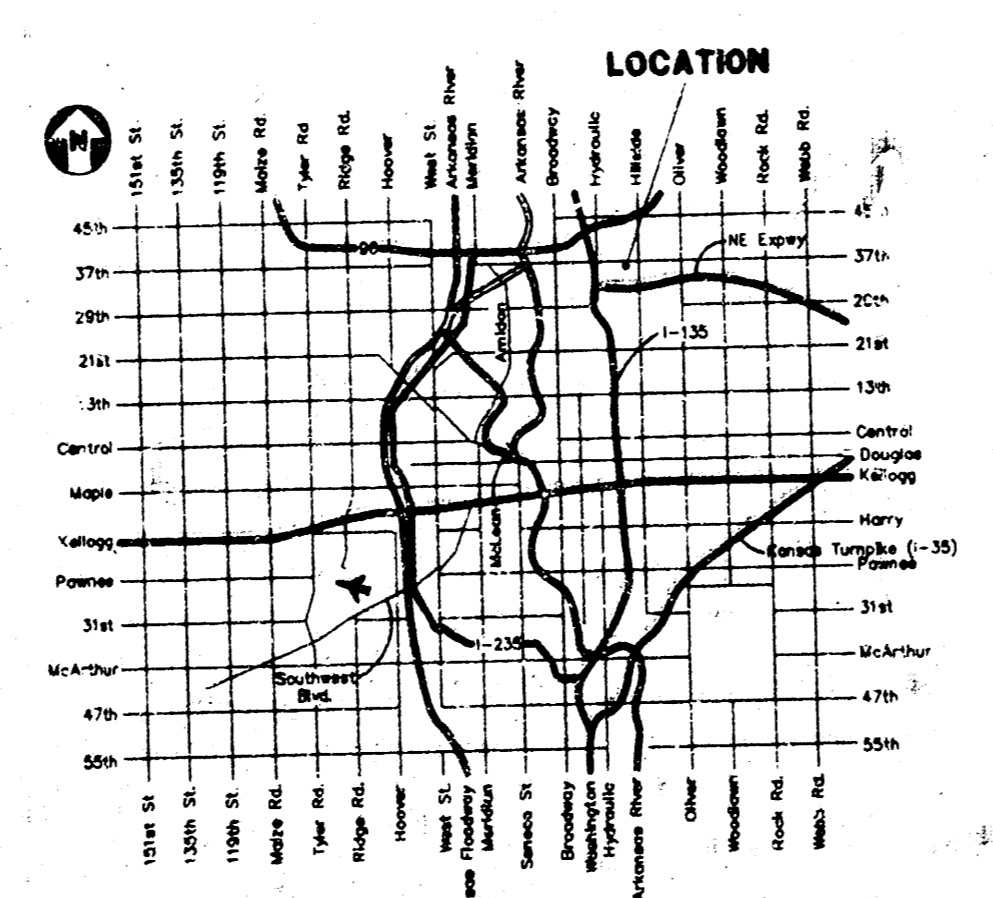
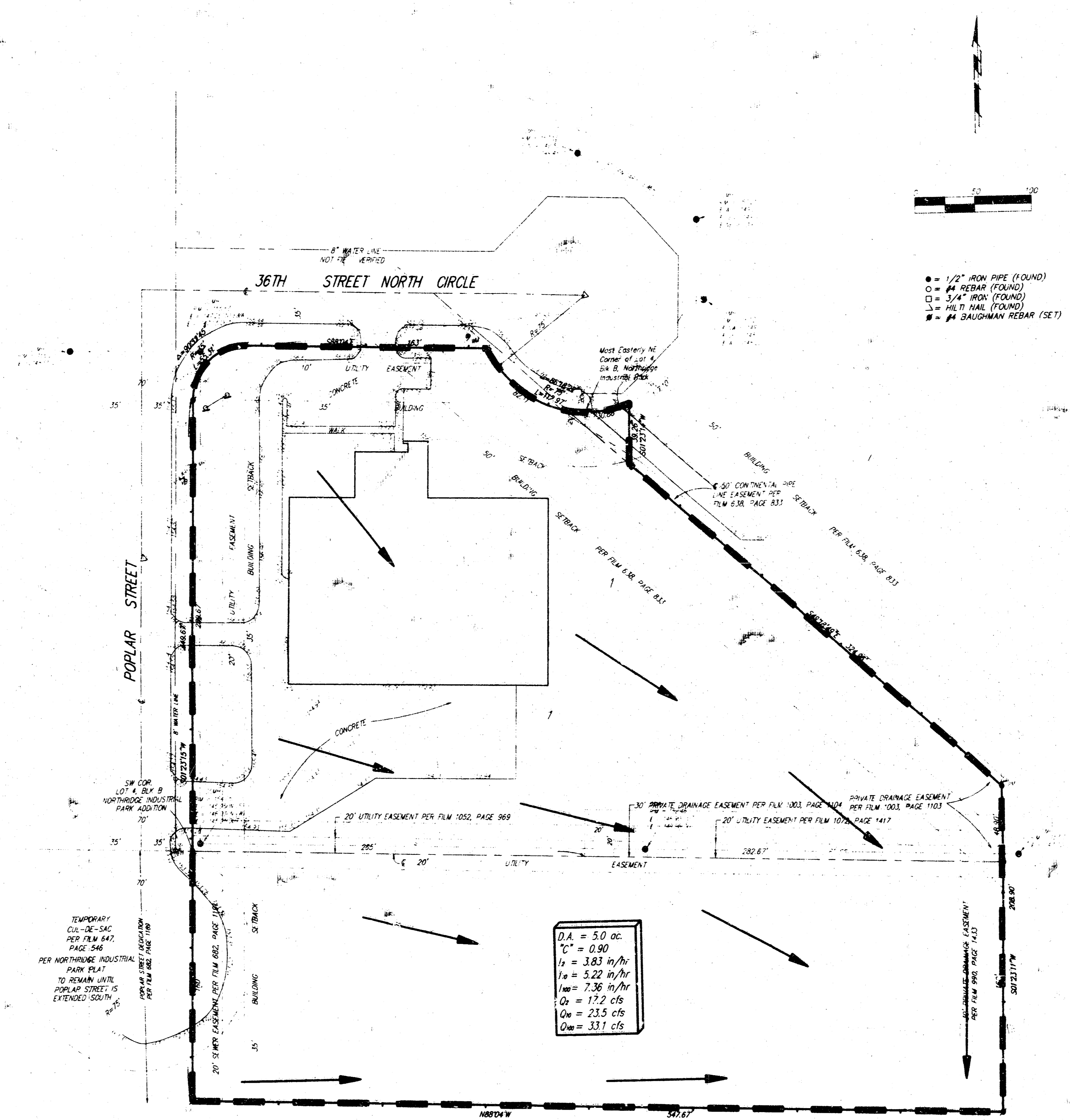


# DRAINAGE PLAN

## L & L VAN LINES ADDITION

### WICHITA, SEDGWICK COUNTY, KANSAS



**VICINITY MAP**

**BENCHMARK**  
HILT NAIL AT THE CENTER  
ON 36TH STREET NORTH CIRCLE  
ELEVATION = 1575.53 CITY DATUM

**OWNER**  
L & L VAN LINES, INC.  
417N. WYCKE AVENUE  
2525 E. 36TH CIRCLE NORTH  
WICHITA, KANSAS 67219

Runoff to drain  
to off-site  
detention facility

**BAUGHMAN COMPANY P. A.**  
ENGINEERING, SURVEYING, & PLANNING