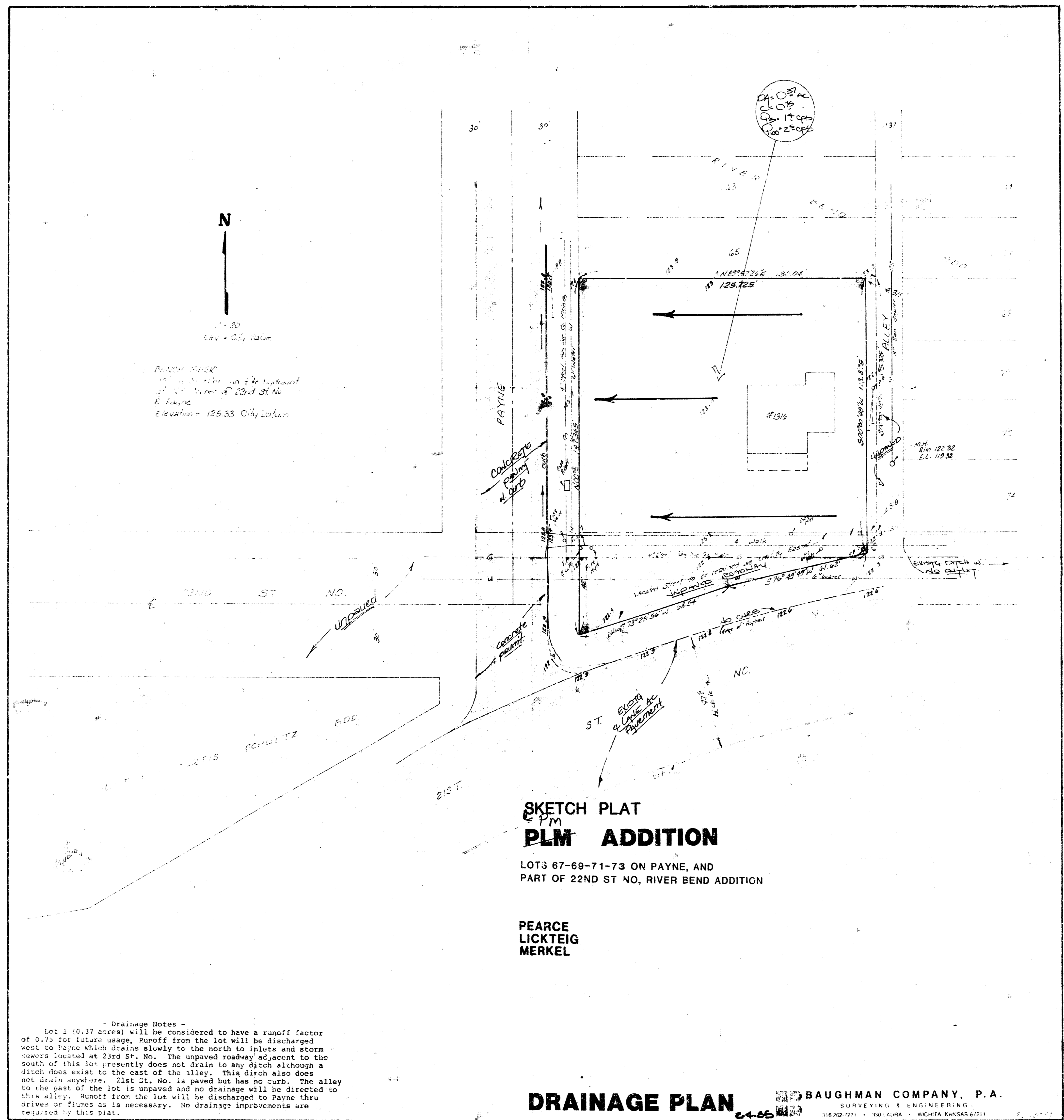


L P M ADDITION  
(Drainage)  
(Has P L M Addition)



RAINWATER  
TO BE COLLECTED AND DISCHARGED  
TO THE STORM SEWER AT 23RD ST. NO.  
E. LAUREL  
ELEVATION 125.33 CITY DATUM

SKETCH PLAT  
PLM ADDITION

LOTS 67-69-71-73 ON PAYNE, AND  
PART OF 22ND ST NO, RIVER BEND ADDITION

PEARCE  
LICKTEIG  
MERKEL

- Drainage Notes -  
Lot 1 (0.37 acres) will be considered to have a runoff factor of 0.75 for future usage. Runoff from the lot will be discharged west to Payne which drains slowly to the north to inlets and storm sewers located at 23rd St. No. The unpaved roadway adjacent to the south of this lot presently does not drain to any ditch although a ditch does exist to the east of the alley. This ditch also does not drain anywhere. 21st St. No. is paved but has no curb. The alley to the east of the lot is unpaved and no drainage will be directed to this alley. Runoff from the lot will be discharged to Payne thru drives or flumes as is necessary. No drainage improvements are required by this plat.

**DRAINAGE PLAN** 24-65  
BAUGHMAN COMPANY, P.A.  
SURVEYING & ENGINEERING  
118-262-1271 • 1001 S. ALMA • WICHITA, KANSAS 67211