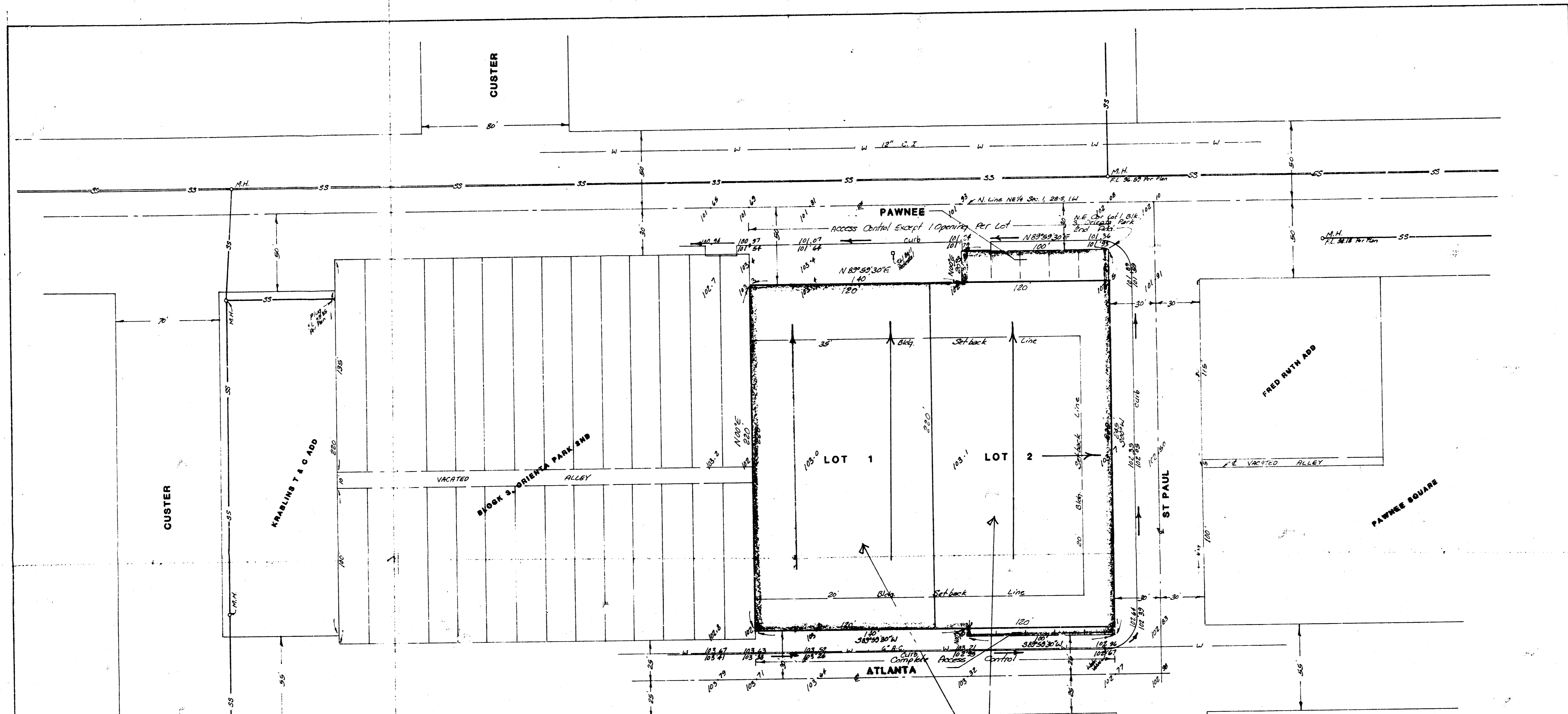


LACOUNT ADDITION (Drainage)



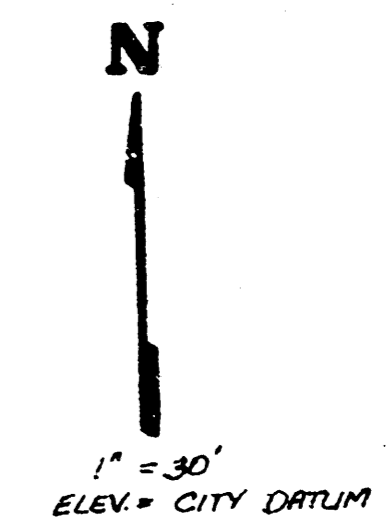
SKETCH PLAT  
**LACOUNT ADDITION**

LOTS 1 AND 2, VACATED ALLEY, BAKER MACHINE COMPANY ADDITION AND  
 LOTS 1 THRU 10, BLOCK 3, AND VACATED ALLEY, ORIENTA PARK SECOND ADDITION

KIM E. & CATHERINE LACOUNT

**DRAINAGE PLAN**

DA 0' 0" ac 1/4  
 CA 0' 0" ac 0  
 CB 0' 0" ac 0  
 CC 4' 4" ac 0



BENCH MARK:  
 City Standard Elev. (Corner E. Sheridan)  
 55.5' E of E of 1/4 Sec. Corner  
 Elev. = 103.232 City Datum

GENERAL NOTES

THE TWO COMMERCIAL LOTS WILL DRAIN NORTH TO THE PAVED STREET. DISCHARGE OF STORM WATER RUNOFF FROM THE LOTS WILL BE CONVEYED TO THE STREET THROUGH EITHER DRIVES OR FLUMES. ATLANTA AND ST. PAUL ARE BOTH PAVED AND DRAIN NORTH TO PAWNEE. PAWNEE DRAINS TO THE WEST TO STORM SEWERS AS INDICATED.

**ED BAUGHMAN COMPANY, P.A.**  
 SURVEYING & ENGINEERING  
 2100-2071 • 216-8116 • MOBILE, ALABAMA 36611

29 JUNE 1987