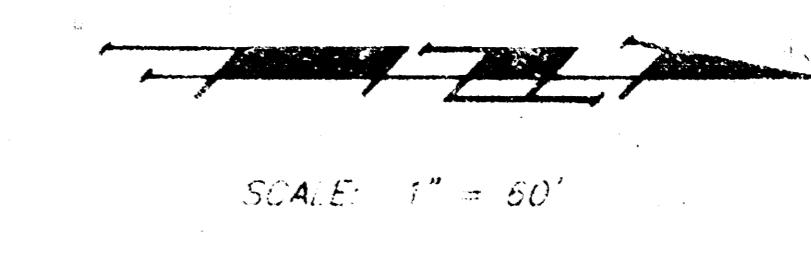
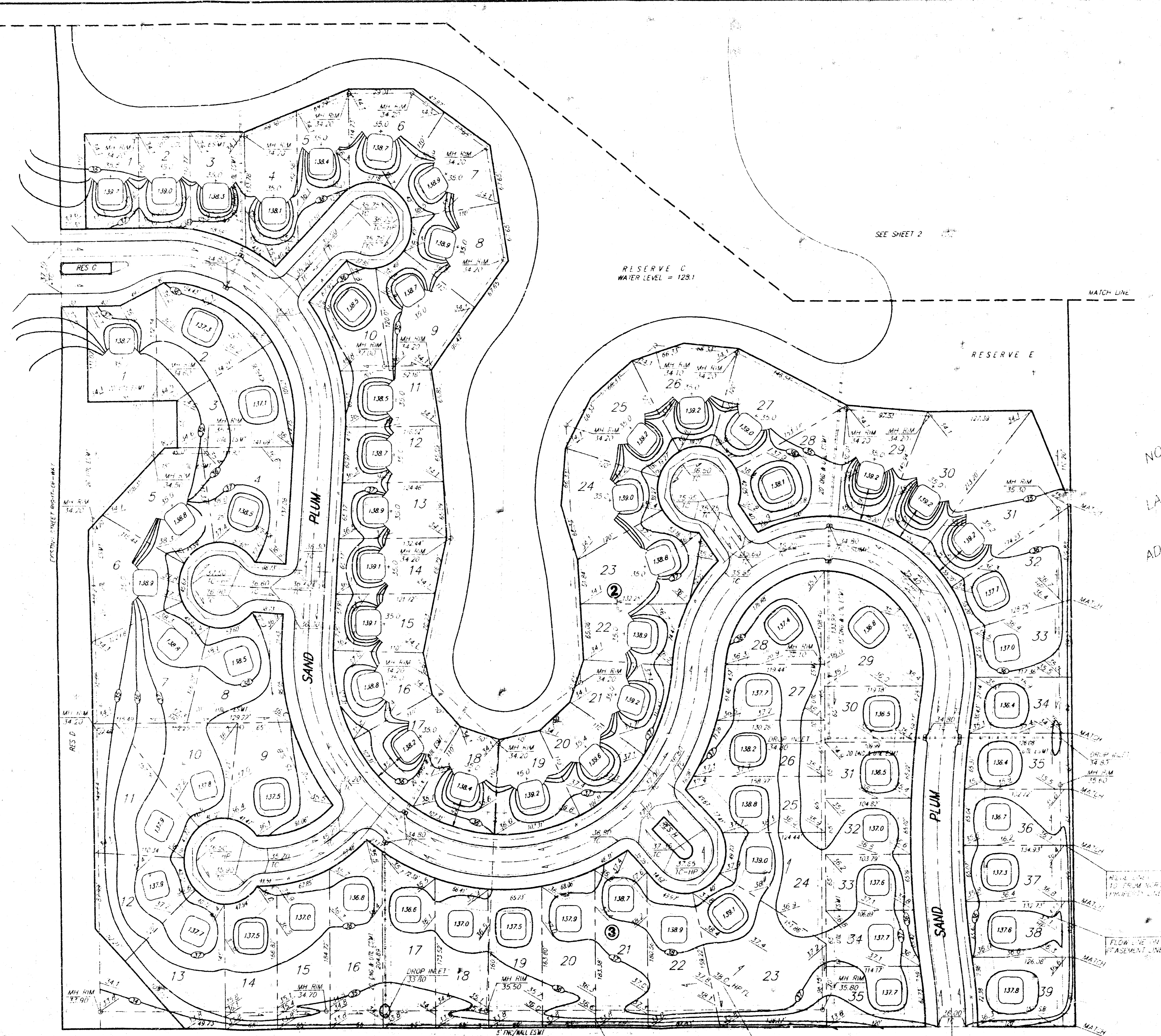


SEDGWICK COUNTY ZOO 2ND ADDITION

NO ST 21ST



**APPROVED DRAINAGE PLAN**

**BENCH MARK:**  
 City Standard Disk  
 70' North and 5th East  
 of the 1/4 Sec Cor  
 at North Shore Blvd and 21st St No.  
 Elev = 132.42 City Datum  
 Elev = 1319.82 U.S.L.

**NOTE:**  
 Proposed minimum garage floor elevations are shown on plans. Contractor to set finish floor elevation.  
 All street elevations shown on plans are for top of curb (full height).  
 Contour elevations shown are for graphic representation of drainage concept. Spot elevations shall take precedence over contour lines.  
 This grading plan has been designed based on a view-out basement concept.  
 Setback distances shown beyond the platted 25' building setback line are shown for garage locations so that the driveway slope does not exceed 10%.

**LAKE RIDGE 2ND ADDITION LOT GRADING PLAN**

**BAUGHMAN COMPANY P. A.**  
 ENGINEERING & SURVEYING  
 1034 E 26th Street • 3rd Floor • Wichita, Kansas 67211

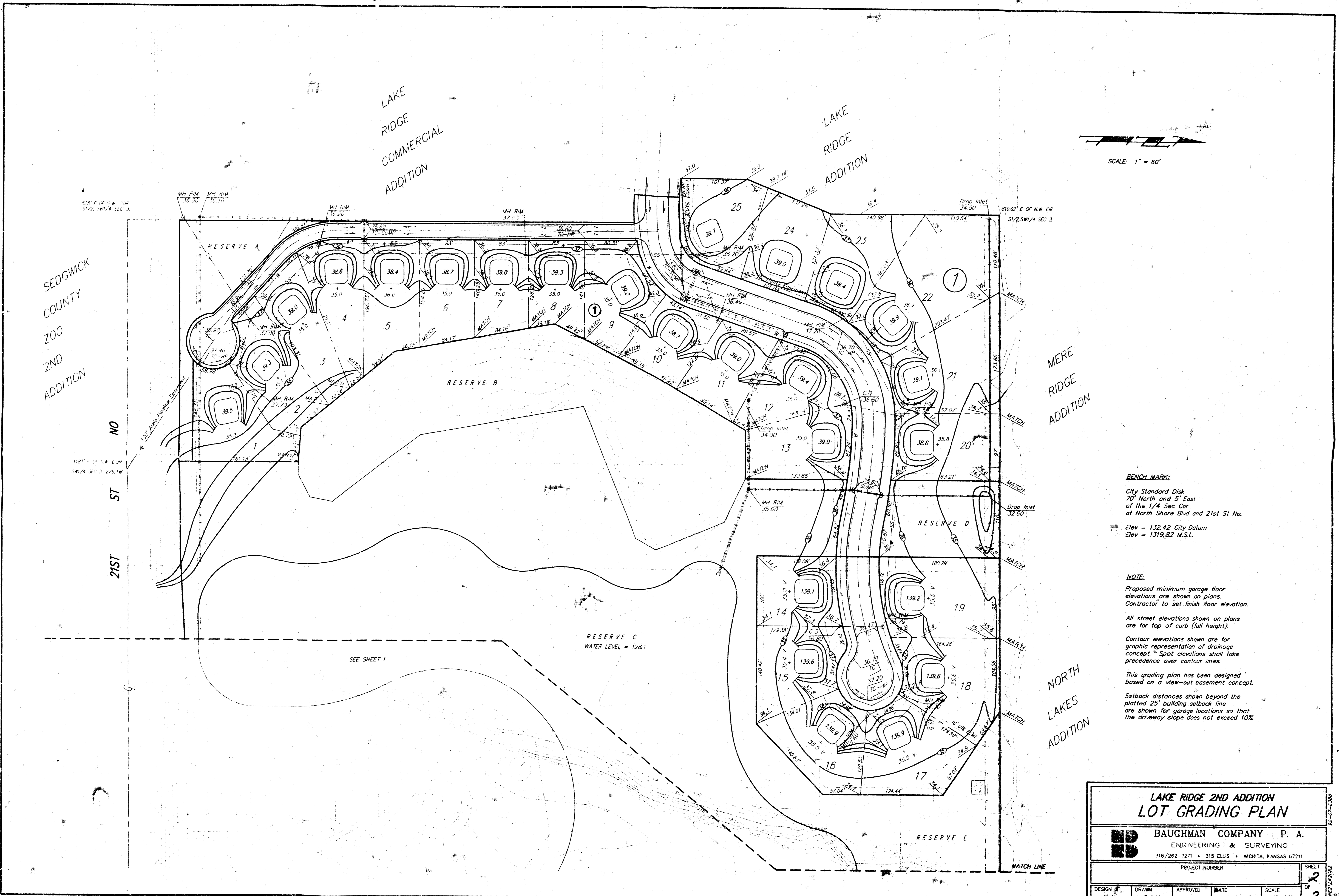
PROJECT NUMBER: \_\_\_\_\_

DESIGN	DRAWN	APPROVED	DATE	SCALE
			11-9-01	1" = 60'

SHEET 1 OF 2

1/4 E 119 5th/24 SEC 3, 27S 19

NORTH SHORE BLVD NORTH LAKES ADDITION



SCALE: 1" = 60'

**BENCH MARK:**  
 City Standard Disk  
 70' North and 5' East  
 of the 1/4 Sec Cor  
 at North Shore Blvd and 21st St No.  
 Elev = 132.42 City Datum  
 Elev = 1319.82 M.S.L.

**NOTE:**  
 Proposed minimum garage floor  
 elevations are shown on plans.  
 Contractor to set finish floor elevation.  
 All street elevations shown on plans  
 are for top of curb (full height).  
 Contour elevations shown are for  
 graphic representation of drainage  
 concept. Spot elevations shall take  
 precedence over contour lines.  
 This grading plan has been designed  
 based on a view-out basement concept.  
 Setback distances shown beyond the  
 platted 25' building setback line  
 are shown for garage locations so that  
 the driveway slope does not exceed 10%.

<b>LAKE RIDGE 2ND ADDITION LOT GRADING PLAN</b>				
<b>BAUGHMAN COMPANY P. A.</b> ENGINEERING & SURVEYING 316/262-7271 • 315 ELLIS • WICHITA, KANSAS 67211				
PROJECT NUMBER				2
DATE				11-9-93
SCALE				1"=60'
DESIGN P.J.	DRAWN B.A.M.	APPROVED	DATE	SHEET 2 OF 2

