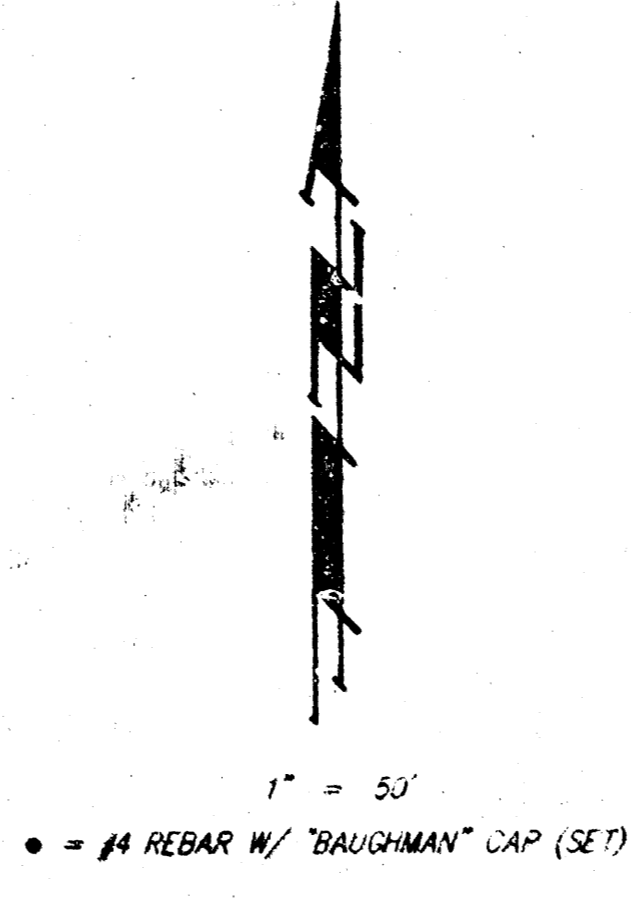
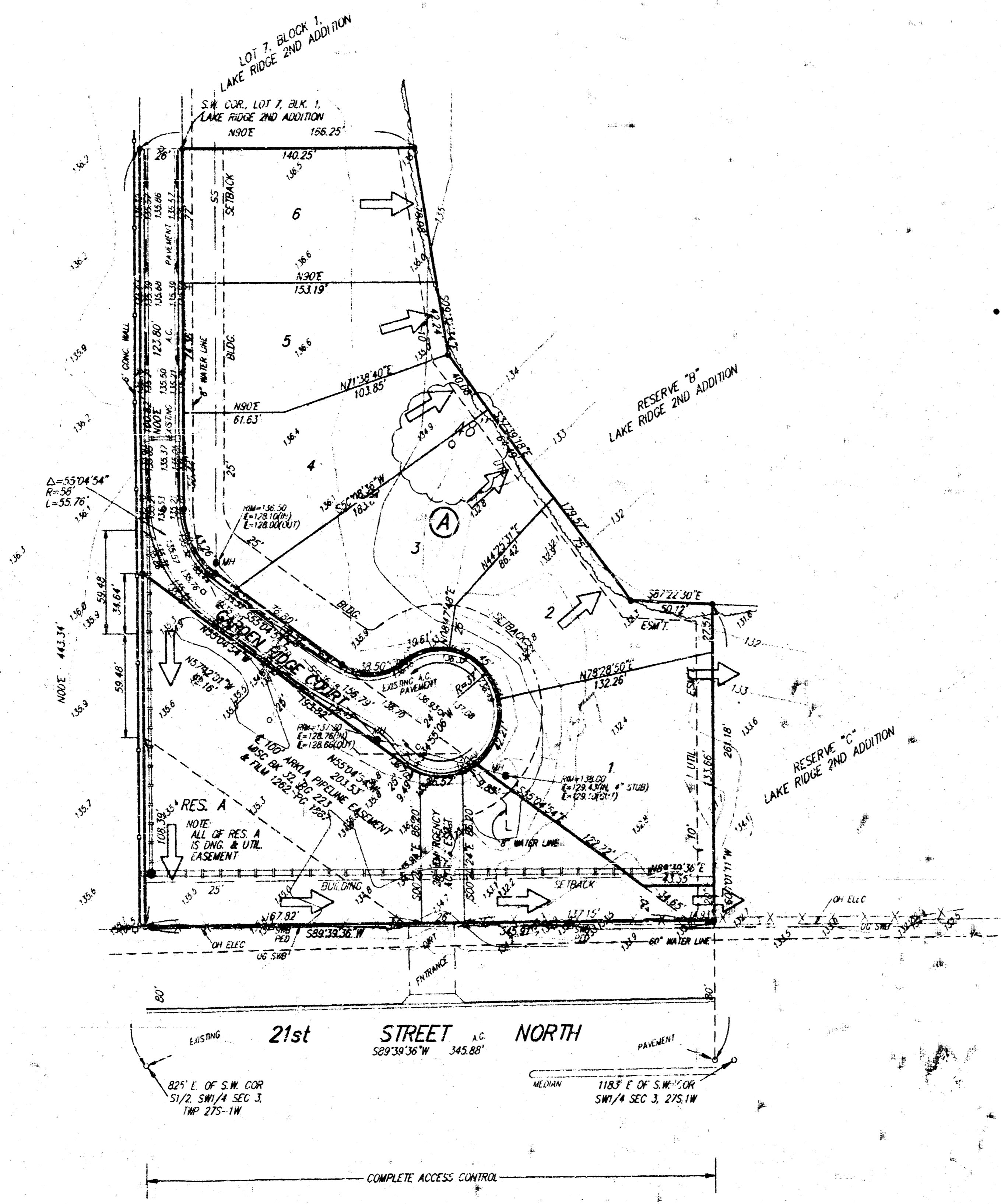


DRAINAGE PLAN
LAKE RIDGE 3RD ADDITION
WICHITA, SEDGWICK COUNTY, KANSAS



LEGAL DESCRIPTION:
 A REPLAT OF LOTS 1, 2, 3, 4, 5, AND 6, BLOCK 1, RESERVE "A",
 AND THAT PORTION OF GARDEN RIDGE COURT LYING SOUTH OF THE
 NORTH LINE OF SAID LOT 2, BLOCK 1, AS EXTENDED WEST TO THE
 WEST LINE OF SAID GARDEN RIDGE COURT, ALL AS PLATTED IN
 "LAKE RIDGE 2ND ADDITION", WICHITA, SEDGWICK COUNTY, KANSAS.

OWNER:
 R.B.R., INC.
 ATT'N: RANDY DEAN
 1147 COACHHOUSE CT.
 WICHITA, KS 67235

BENCH MARK:
 CITY STANDARD DISC - 1.70 FEET NORTH
 AND 5 FEET EAST OF THE 1/4 SEC. COR.
 AT NORTH SHORE BLVD. & 21ST ST. NO.
 ELEV. = 132.42 CITY DATUM
 ELEV. = 1319.82 M.S.L.

MINIMUM PAD ELEVATIONS		
Lot	Block	Elevation (NGVD)
1-6	A	1322.4

7 DEC 1994