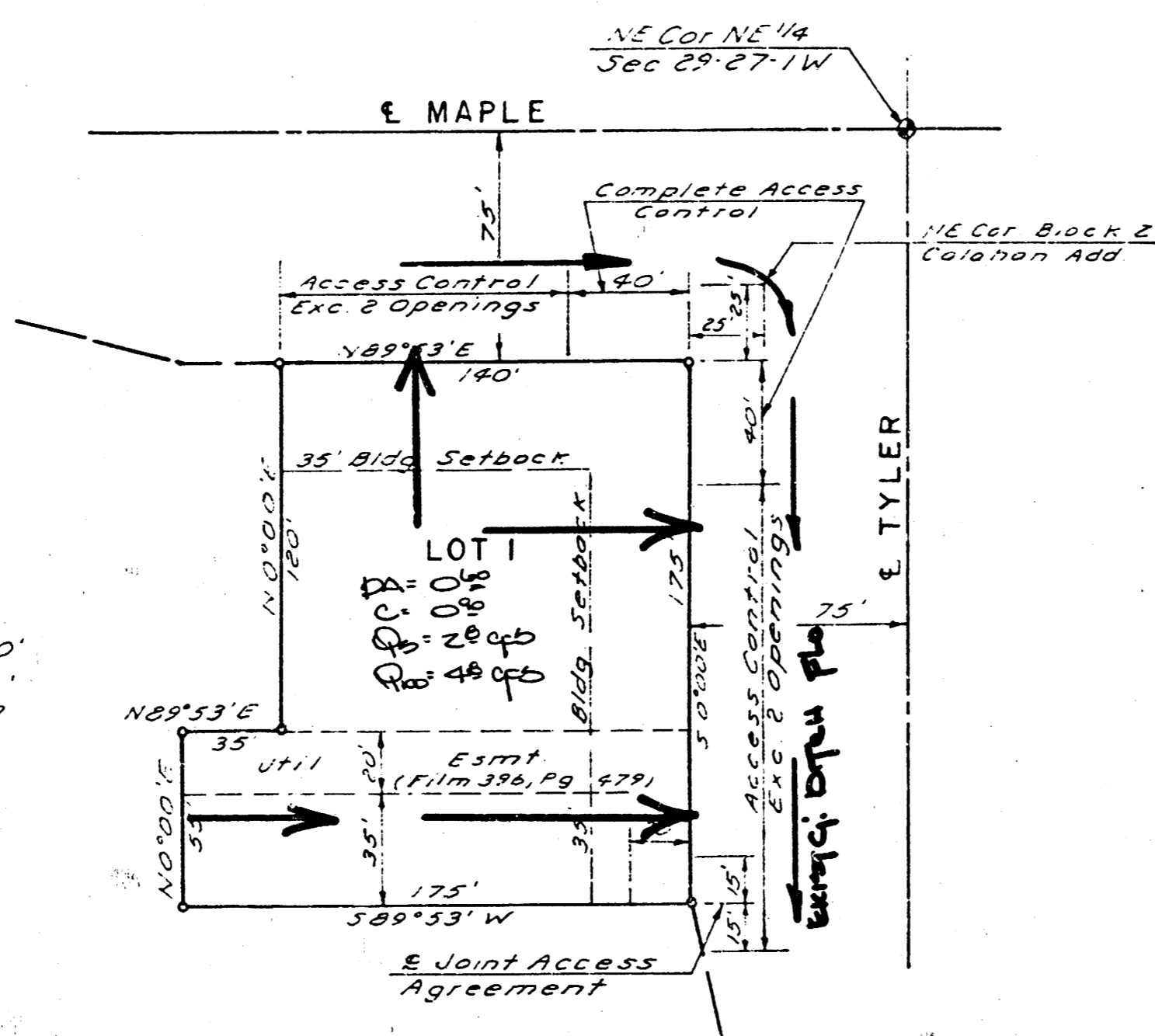


2-6-84
drainage plan

LAMAR'S ADDITION
(Drainage)

LAMAR'S ADDITION WICHITA, KANSAS



This plot of "LAMAR'S A
Kansas, has been submitted
by the Wichita-Sedgwick Cou
Area Planning Commission, is
this ___ day of _____, 1984
Wichita-Sedgwick County Met.
Area Planning Commission

Russell E. Entinheim

Robert A. Lawin

This plot approved and a
hereon accepted by the Board
Wichita, Kansas, this ___ day of _____

Margaret Wright

Donald C. Blotek

B BAUGHMAN COMPANY, P.A.
SURVEYING & ENGINEERING
316/262-7271 • 330 LAURA • WICHITA, KANSAS 67211

CONFIRMATION
MEMO

PROJECT	LAMAR'S ADDITION	DATE	2-6-84
TO	Chris Breitenstein	COPIES TO	
FROM	N. Brent Wooten		
REFERENCE	Final drainage plan		

Final plat is scheduled for subdivision for Feb. 16, 1984.

The lot will be developed for a Quick Trip site with a runoff factor of 0.90 used.

Lot 1 (0.60') will drain north to Maple and East to Tyler thru Drives. Tyler and Maple adjacent to this plat are to be paved to standards with a channelized intersection. Presently both are asphalt mat streets with ditches.

RECEIVED
FEB 10 1984
Engl. Co.