

BENCHMARKS:

BM #1 "□" On Top of Curb Located on the East Side of Sheppard 12.5' South of the North Line of Pawnee Mesa Addition. Elevation = 143.56 (City Datum)

BM #2 R.R. Spike in East Side of P.P. Located 112.5' North of the North R/W of Dara and 41.5' East of the E of 119th Street West. Elevation = 145.26 (City Datum)

BM #3 City of Wichita Benchmark Disc. North end of West Headwall of R.C.B.C., Lark and May. Elevation = 139.20 (City Datum)



Scale: 1" = 40'
• = Iron

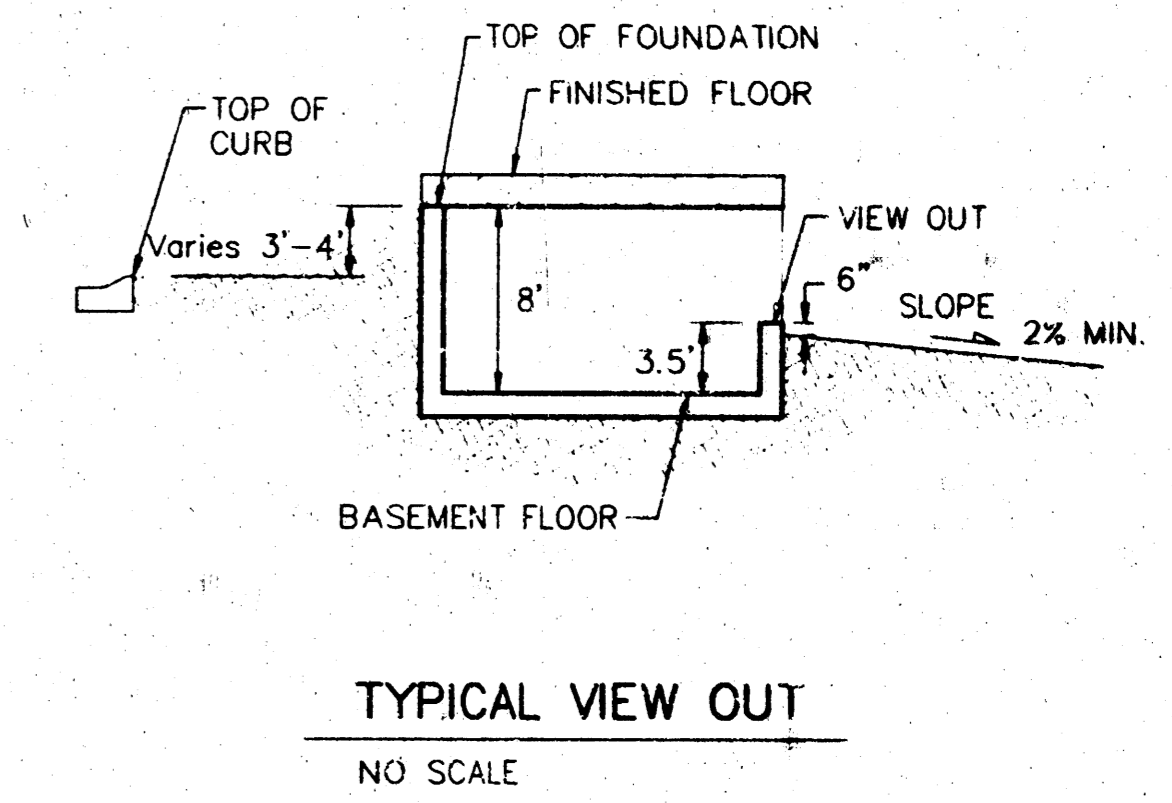
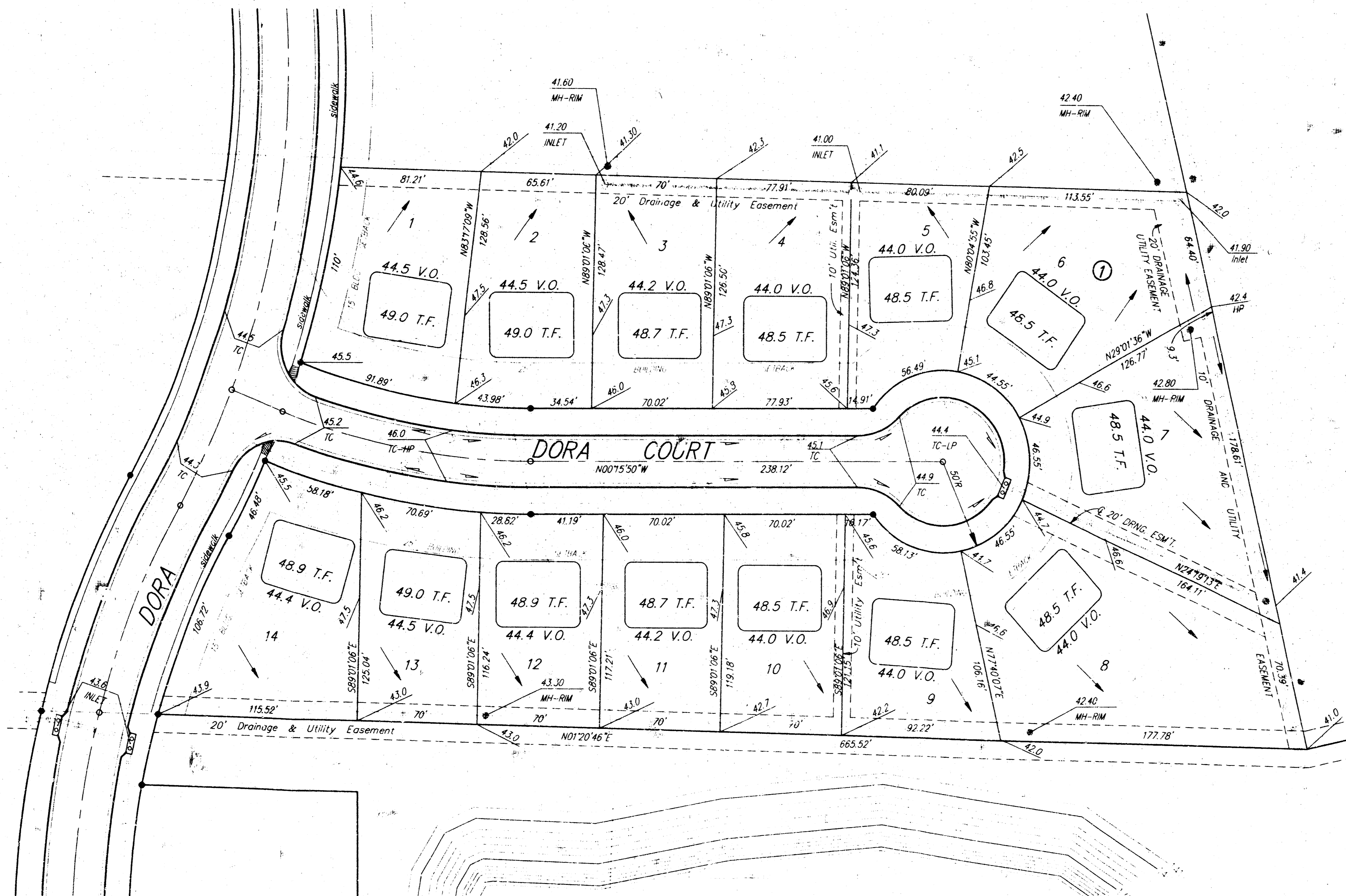
NOTE:

Proposed top of foundation elevations are shown on plans. Contractor to set finish floor elevation.

All street elevations shown on plans are for top of curb (full height).

View-out elevations are denoted as XX.X V.O.
Walk-out elevations are denoted as XX.X W.O.

MINIMUM BUILDING PAD ELEVATIONS FOR LOWEST OPENINGS TO THE STRUCTURES			
LOT	BLOCK	ELEVATION	
		CITY DATUM	M.S.L.
8-14	1	144.0	1331.4



RESERVE "A" LAKE
STATIC WATER SURFACE = 139.0 CITY DATUM
100 YEAR MAX. WATER SURFACE ELEVATION = 141.0 CITY DATUM

APPROVED DRAINAGE PLAN

Revised 4-97 JLL/BP
Revised 3-97 NBW

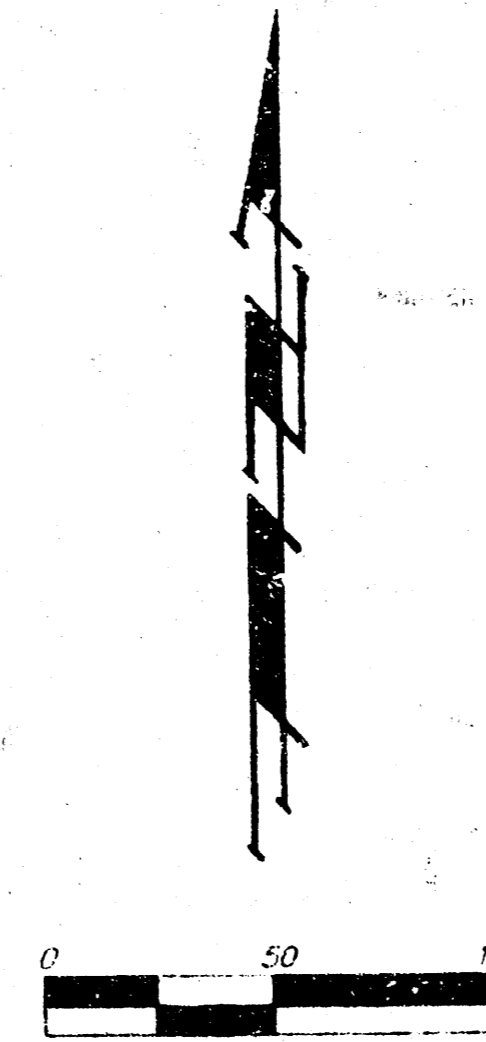
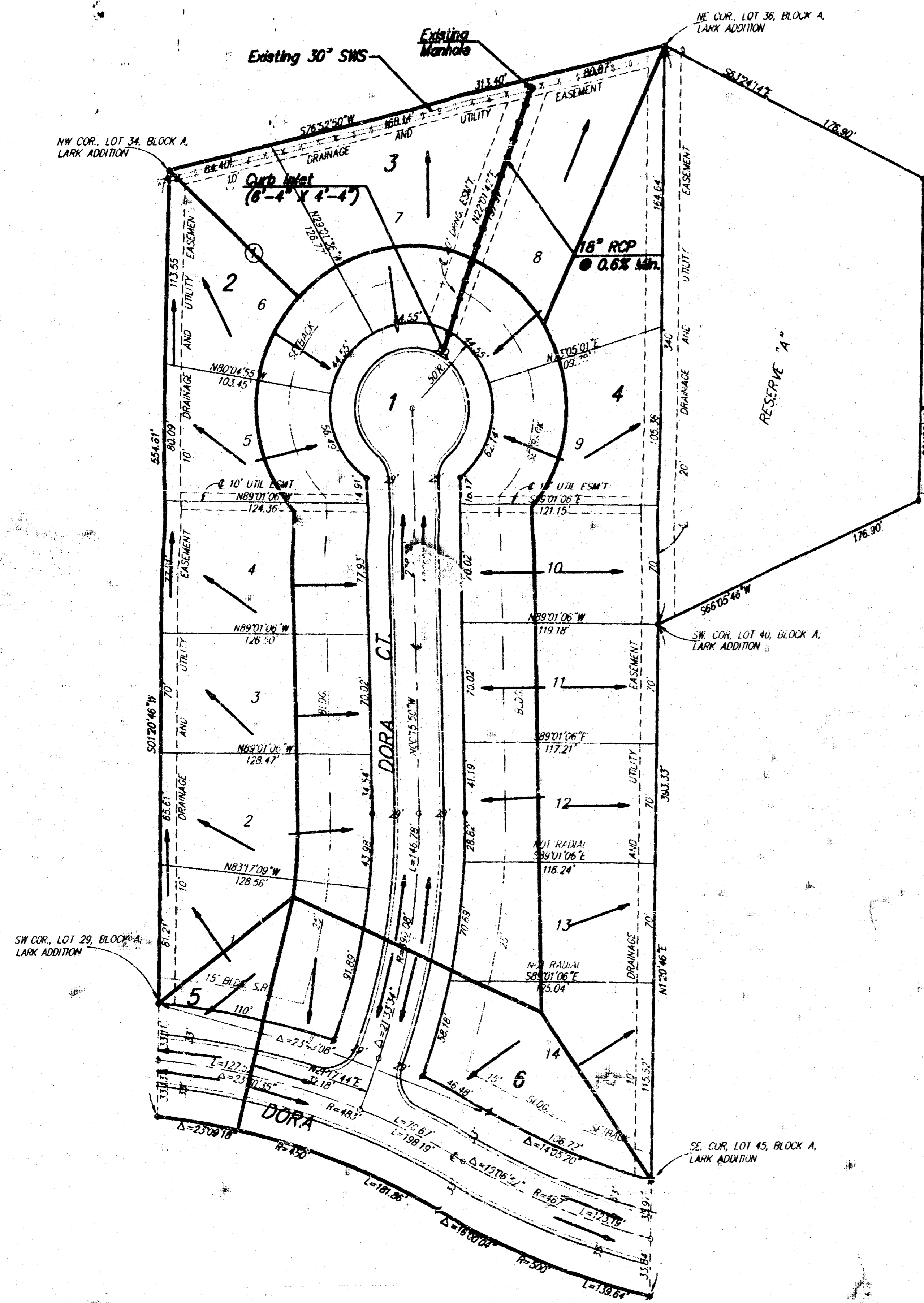
LARK 4TH ADDITION
LOT GRADING PLAN
DORA COURT

ED BAUGHMAN COMPANY P. A.
ENGINEERING, SURVEYING, & PLANNING
316-262-7271 • 115 ELLIS • WICHITA, KANSAS 67211

PROJECT NUMBER: _____ SHEET: **1** OF **1**

DESIGN: EP	DRAWN: MC	APPROVED: JLP	DATE: APR 1997	SCALE: 1"=40'
------------	-----------	---------------	----------------	---------------

DRAINAGE PLAN LARK 4TH ADDITION WICHITA, SEDGWICK COUNTY, KANSAS



- = #4 REBAR W/ "BAUGHMAN" CAP (SET)
- = #4 REBAR W/ "BAUGHMAN" CAP (FOUND)

MINIMUM BUILDING PAD ELEVATIONS FOR LOWEST OPENINGS TO THE STRUCTURES			
LOT	BLOCK	CITY DATUM	M.S.L.
8-14	1	144.0	1331.4

BENCHMARK:
CITY OF WICHITA BENCH MARK DISC. N. END OF
S. HEADWALL OF R.C.C. LARK & MAY
ELEV. = 139.20 (CITY DATUM)

Drainage Basin	Basin Area	Rational C ² 2H	Rational C ² 100H	Intensity 2 Yr	Intensity 100 Yr	Flow Rate 2 Yr	Flow Rate 100 Yr
1	1.7	0.54	0.67	3.83	7.37	3.5	8.4
2	0.6	0.54	0.67	3.83	7.37	1.2	3.0
3	0.5	0.54	0.67	3.83	7.37	1.0	2.5
4	0.8	0.54	0.67	3.83	7.37	1.7	4.0
5	0.1	0.54	0.67	3.83	7.37	0.2	0.5
6	0.7	0.54	0.67	3.83	7.37	1.4	3.5