

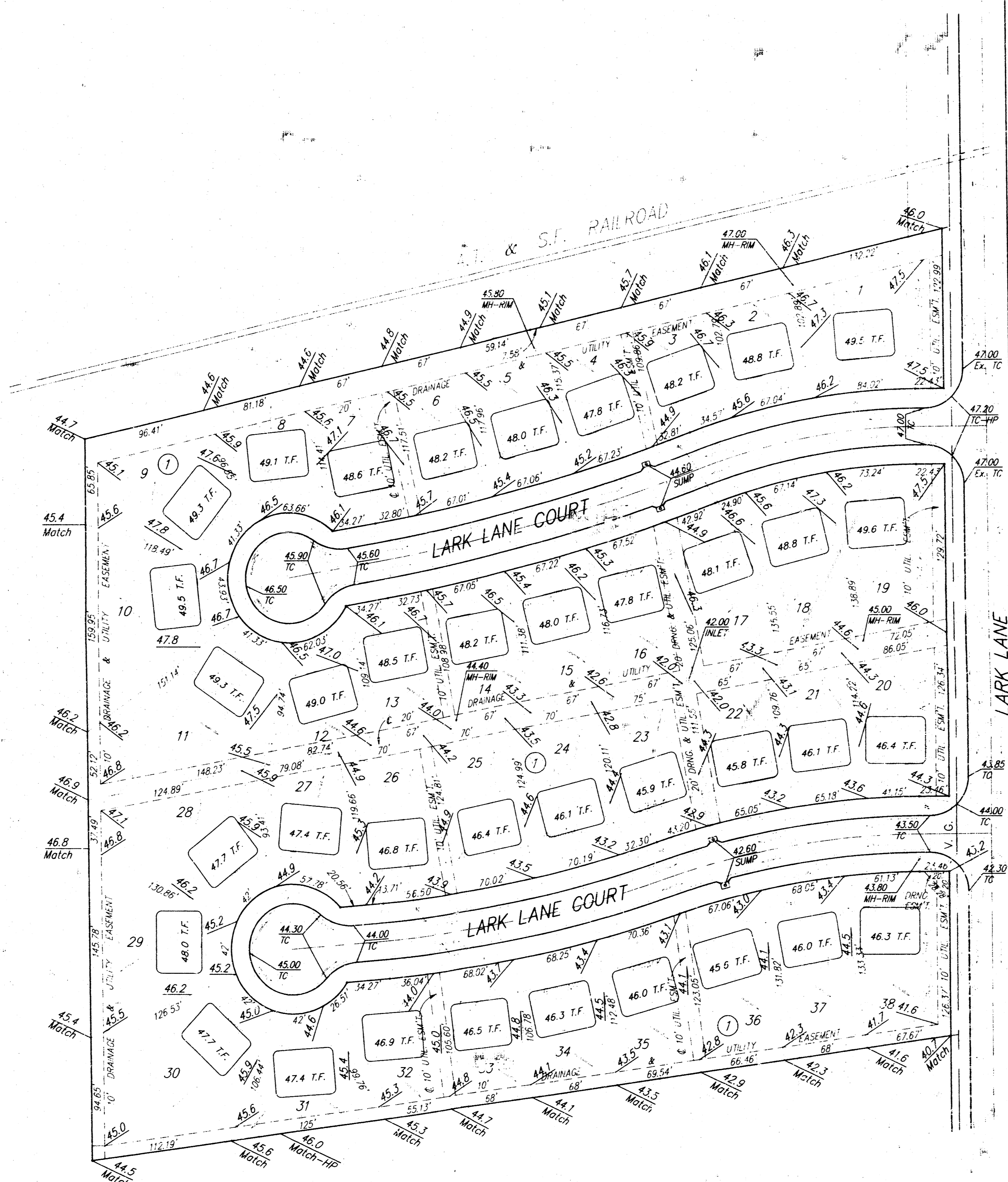
BENCHMARKS:

BM #1 City of Wichita Bench Mark Disc. N.
End W. Headwall of R.C.B.C., Lark
& May.
Elev. = 139.20 (City Datum)

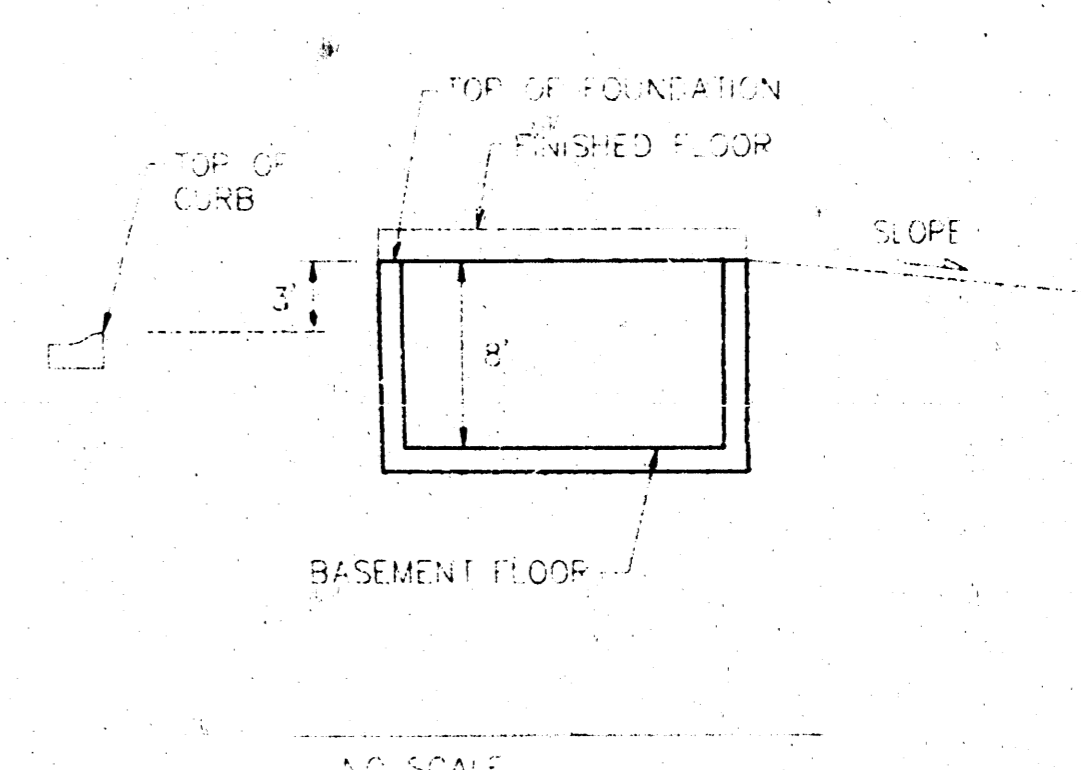
BM #2 "□" Top of Curb Located
on the East Side of Shefford
12.5' South of the North Line
of Pawnee Mesa Addition
Elev. = 143.56 (City Datum)

KELLOGG (US-54)

Scale: 1" = 60'
= Iron



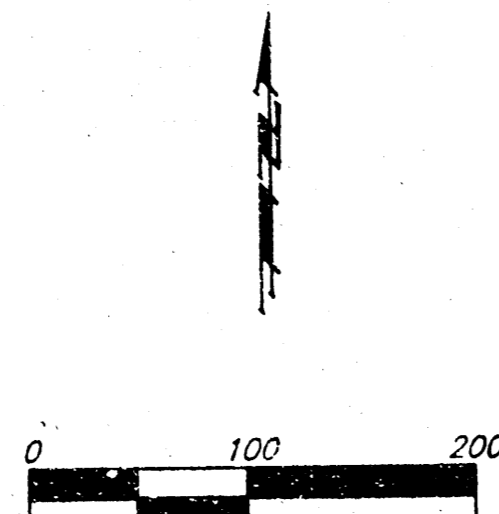
Notes:
Proposed top of foundation elevations
are shown on plans.
Contractor to set final floor elevation.
All street elevations shown on plans
are for top of curb (1" height).



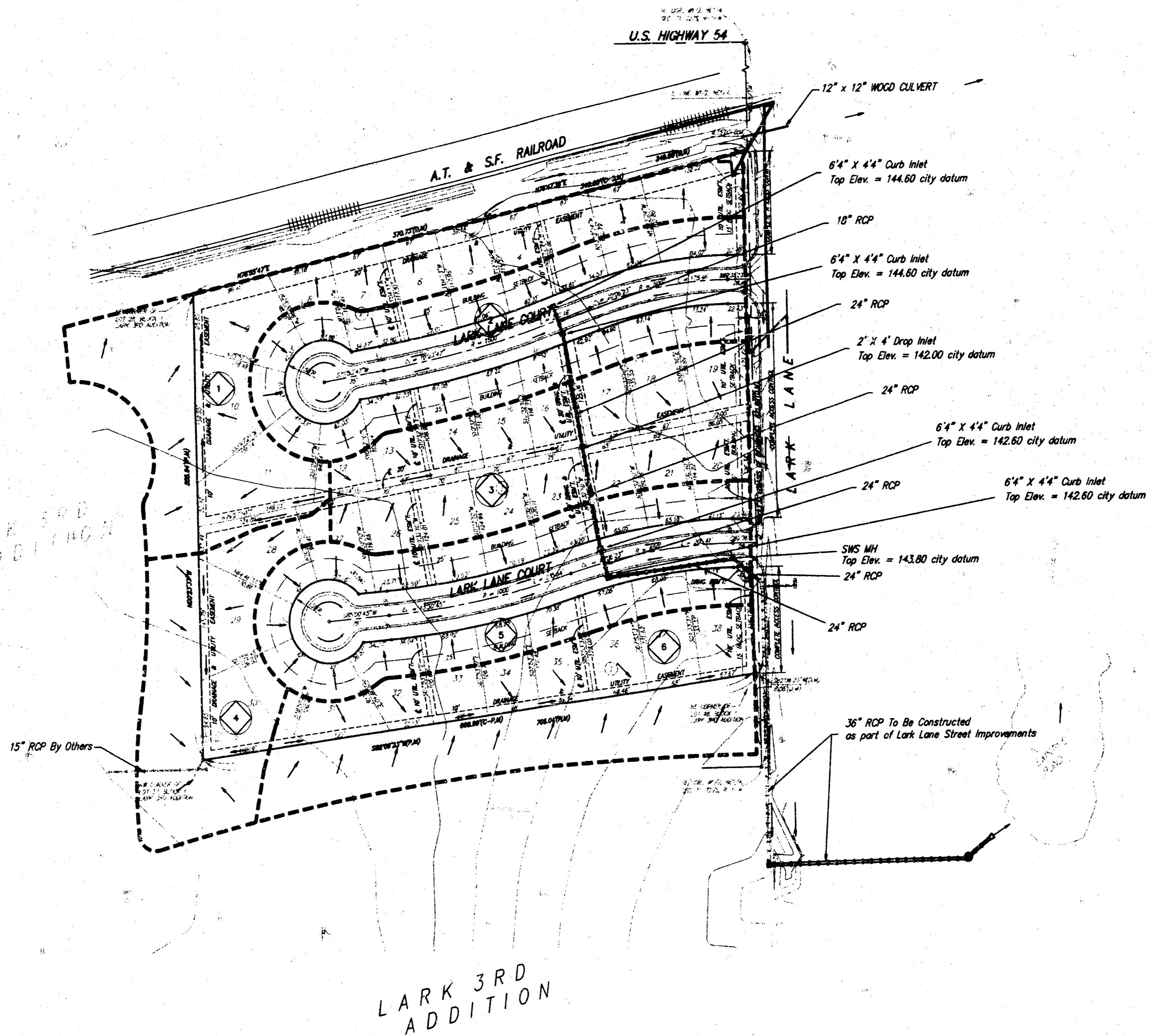
**APPROVED
DRAINAGE PLAN**

GRADING PLAN				
BAUGHMAN COMPANY P.A.				
<small>ENGINEERING, SURVEYING, & PLANNING</small>				
PROJECT NUMBER				SHEET
DESIGN				1
DRAWN	APPROVED	DATE	SCALE	1

DRAINAGE PLAN LARK 5TH ADDITION WICHITA, SEDGWICK COUNTY, KANSAS



BENCHMARK
CITY OF WICHITA BENCH MARK DISC
N. END OF W. HEADWALL OF LARK
& MAY.
ELEV. = 139.20 (CITY DATUM)



OWNER
PAUL E. KELSEY
718 N. 19th Street, #100
Wichita KS, 67212

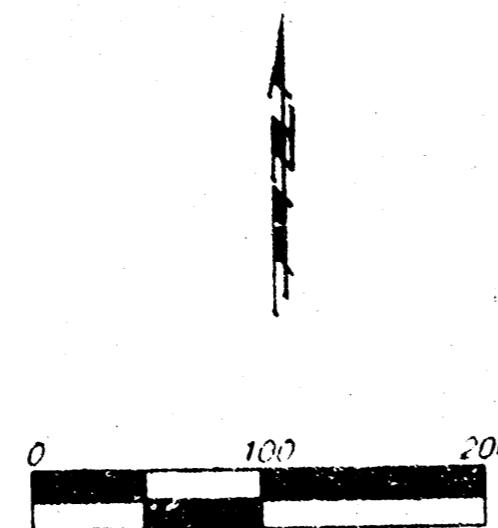
Drainage Area	Area (acres)	C _i	C _m	T _t (min)	I _p (in/hr)	I _m (in/hr)	Q ₁ (cfs)	Q ₂ (cfs)
1	2.3	0.47	0.65	15	3.83	7.37	4.1	11.0
2	2.2	0.47	0.65	15	3.83	7.37	4.0	10.5
3	1.8	0.47	0.65	15	3.83	7.37	3.2	8.6
4	1.3	0.47	0.65	15	3.83	7.37	2.3	6.2
5	2.2	0.47	0.65	15	3.83	7.37	4.0	10.5
6	2.0	0.47	0.65	15	3.83	7.37	3.6	9.8

The Storm Water Sewer System Serving Lark 5th Addition has been sized to convey the 2-yr event.
Larger events will be conveyed within the same system, along with surface drainage within Lark Lane right-of-way.
Runoff Coefficients based on Hydrologic Soil Type B.

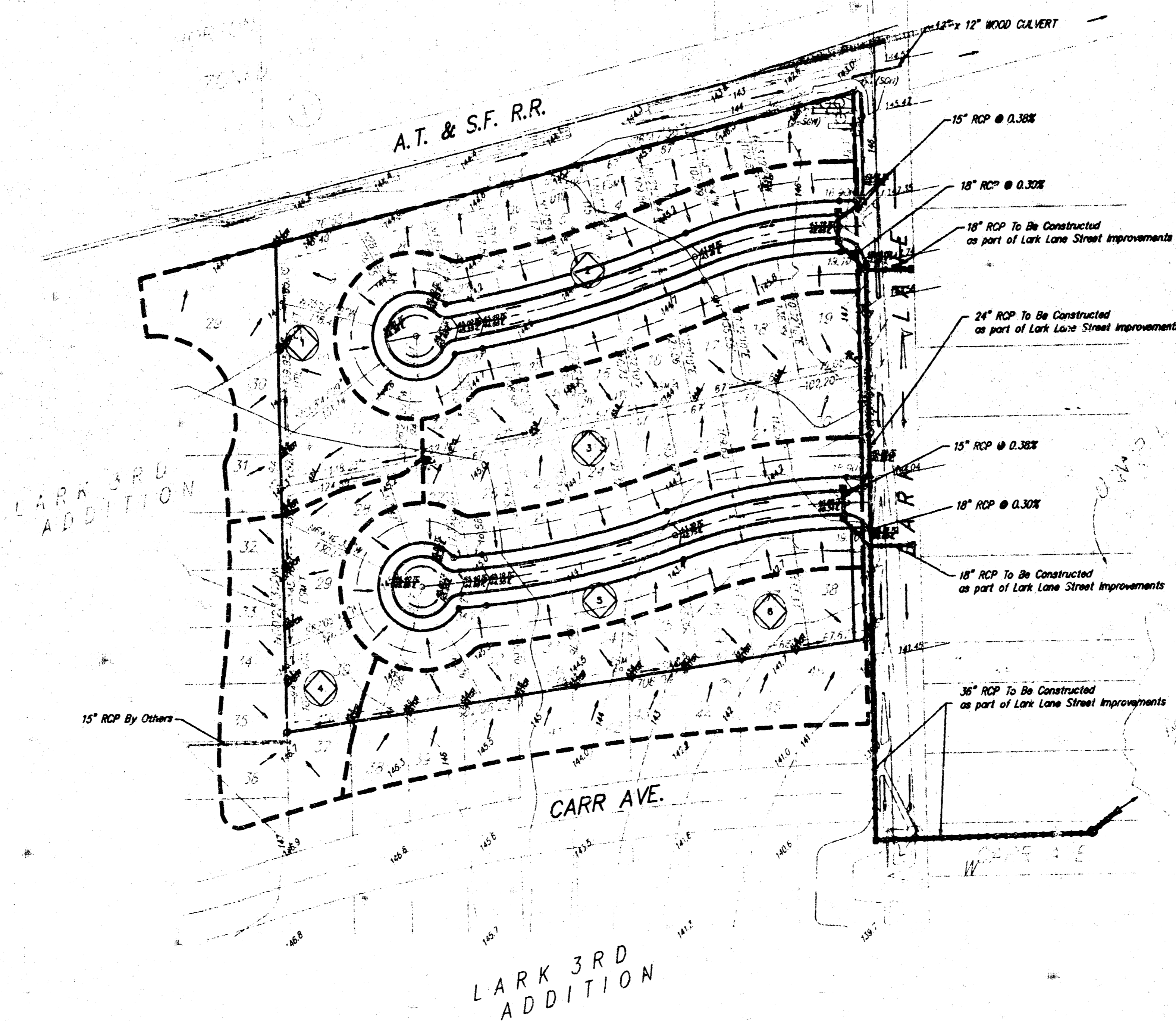
Revised Aug 11, 1997
February 3, 1997

BAUGHMAN COMPANY P. A.
ENGINEERING & SURVEYING
318-552-7271 • 312 E. MAIN • WICHITA, KANSAS 67211

DRAINAGE PLAN LARK 5TH ADDITION WICHITA, SEDGWICK COUNTY, KANSAS



BENCHMARK
CITY OF WICHITA BENCH MARK DISC.
N. END OF W. HEADWALL OF LARK
& MAY.
ELEV. = 139.20 (CITY DATUM)



The Storm Water Sewer System Serving Lark 5th Addition has been sized to convey the 2-yr event.
Larger events will be conveyed within the same system, along with surface drainage within Lark Lane right-of-way.
Runoff Coefficients based on hydrologic Soil Type B.

OWNER
PAUL E. KELSEY
716 N. 119th Street, #112
Wichita KS, 67212

Drainage Area	Area (acres)	Cs	C100	Tc (min.)	I ₂ (in/hr)	I ₁₀₀ (in/hr)	Q _p (cfs)	Q ₁₀₀ (cfs)
1	2.3	0.47	0.65	15	3.83	7.37	4.1	11.0
2	2.2	0.47	0.65	15	3.83	7.37	4.0	10.5
3	1.8	0.47	0.65	15	3.83	7.37	3.2	8.6
4	1.3	0.47	0.65	15	3.03	7.37	2.3	6.2
5	2.2	0.47	0.65	15	3.83	7.37	4.0	10.5
6	2.0	0.47	0.65	15	3.83	7.37	3.6	9.6

February 3, 1997