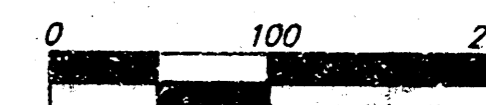
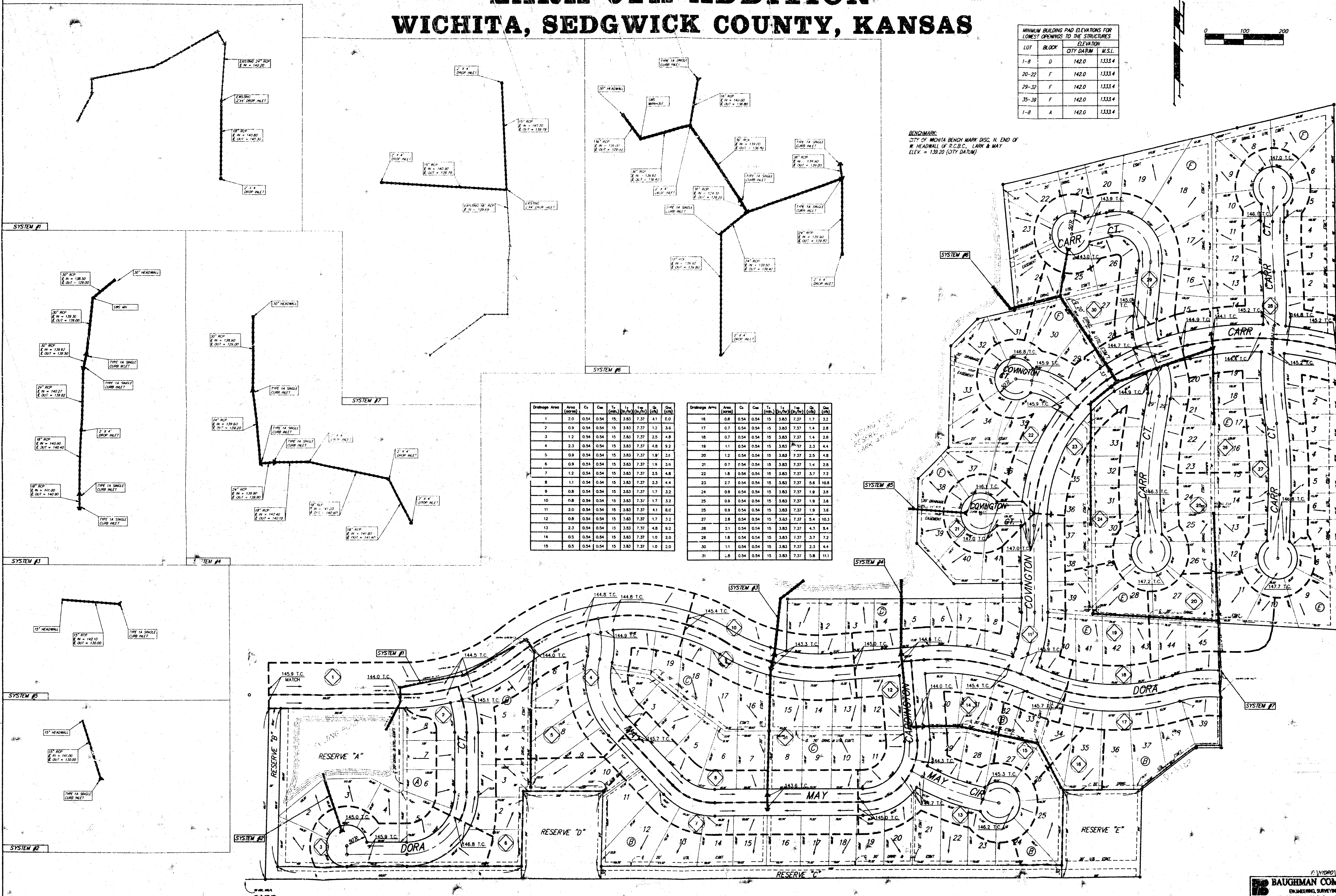


DRAINAGE PLAN LARK 6TH ADDITION WICHITA, SEDGWICK COUNTY, KANSAS

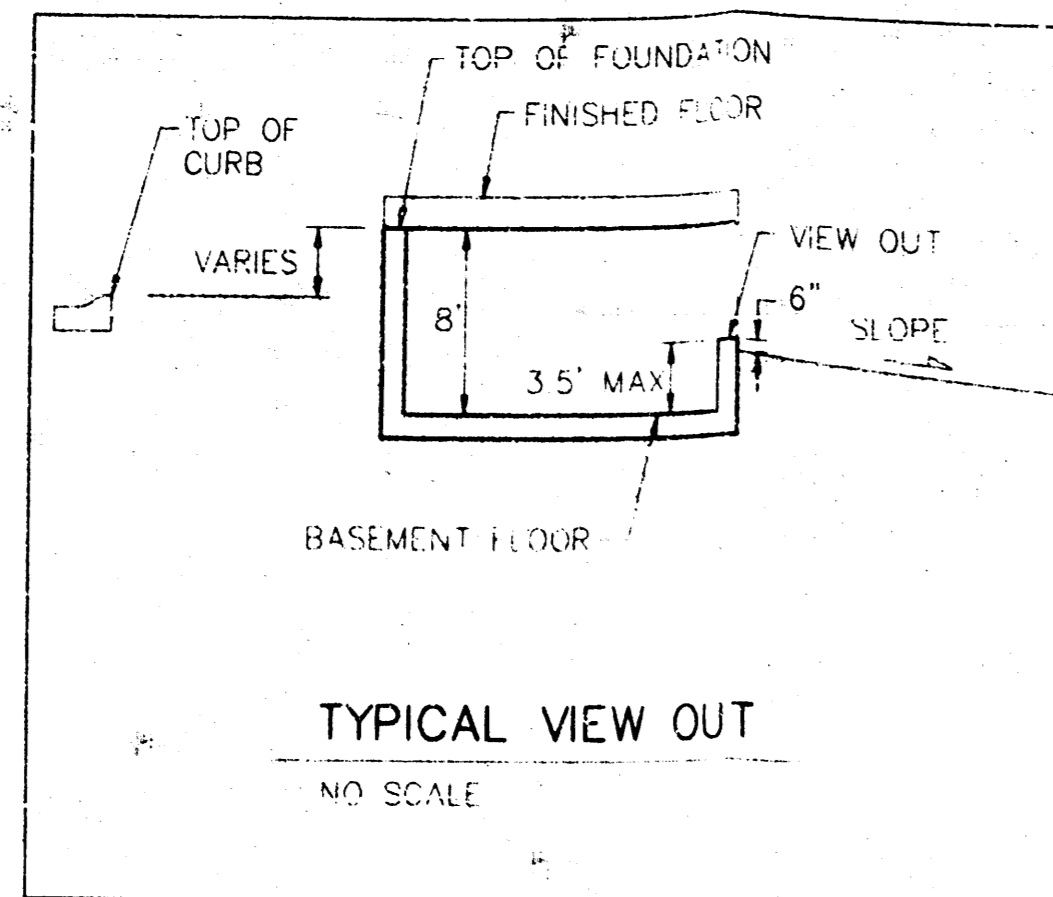
| MINIMUM BUILDING PAD ELEVATIONS FOR LOWEST OPENINGS TO THE STRUCTURES | | | |
|---|-------|------------|--------|
| LOT | BLOCK | CITY DATUM | M.S.L. |
| 1-8 | D | 142.0 | 1333.4 |
| 20-22 | F | 142.0 | 1333.4 |
| 29-32 | F | 142.0 | 1333.4 |
| 35-39 | F | 142.0 | 1333.4 |
| 1-8 | A | 142.0 | 1333.4 |



BENCHMARK:
CITY OF WICHITA BENCH MARK DISC N. END OF
W. HEADWALL OF R.C.B.C. LARK & MAY
ELEV. = 139.20 (CITY DATUM)



| Drainage Area | Area (acres) | C _s | C _m | T _s (min) | T _m (hr) | I _s (in/hr) | I _m (in/hr) | Q _s (cfs) | Q _m (cfs) |
|---------------|--------------|----------------|----------------|----------------------|---------------------|------------------------|------------------------|----------------------|----------------------|
| 1 | 2.0 | 0.54 | 0.54 | 15 | 3.83 | 7.37 | 4.1 | 8.0 | |
| 2 | 0.9 | 0.54 | 0.54 | 15 | 3.83 | 7.37 | 1.2 | 3.6 | |
| 3 | 1.2 | 0.54 | 0.54 | 15 | 3.83 | 7.37 | 2.5 | 4.8 | |
| 4 | 2.3 | 0.54 | 0.54 | 15 | 3.83 | 7.37 | 4.8 | 9.2 | |
| 5 | 0.9 | 0.54 | 0.54 | 15 | 3.83 | 7.37 | 1.9 | 3.6 | |
| 6 | 0.9 | 0.54 | 0.54 | 15 | 3.83 | 7.37 | 1.9 | 3.6 | |
| 7 | 1.2 | 0.54 | 0.54 | 15 | 3.83 | 7.37 | 2.5 | 4.8 | |
| 8 | 1.1 | 0.54 | 0.54 | 15 | 3.83 | 7.37 | 2.3 | 4.4 | |
| 9 | 0.8 | 0.54 | 0.54 | 15 | 3.83 | 7.37 | 1.7 | 3.2 | |
| 10 | 0.8 | 0.54 | 0.54 | 15 | 3.83 | 7.37 | 1.7 | 3.2 | |
| 11 | 2.0 | 0.54 | 0.54 | 15 | 3.83 | 7.37 | 4.1 | 8.0 | |
| 12 | 0.8 | 0.54 | 0.54 | 15 | 3.83 | 7.37 | 1.7 | 3.2 | |
| 13 | 2.3 | 0.54 | 0.54 | 15 | 3.83 | 7.37 | 4.8 | 9.2 | |
| 14 | 0.5 | 0.54 | 0.54 | 15 | 3.83 | 7.37 | 1.0 | 2.0 | |
| 15 | 0.5 | 0.54 | 0.54 | 15 | 3.83 | 7.37 | 1.0 | 2.0 | |
| 16 | 0.8 | 0.54 | 0.54 | 15 | 3.83 | 7.37 | 1.7 | 3.2 | |
| 17 | 0.7 | 0.54 | 0.54 | 15 | 3.83 | 7.37 | 1.4 | 2.8 | |
| 18 | 0.7 | 0.54 | 0.54 | 15 | 3.83 | 7.37 | 1.4 | 2.8 | |
| 19 | 1.1 | 0.54 | 0.54 | 15 | 3.83 | 7.37 | 2.3 | 4.4 | |
| 20 | 1.2 | 0.54 | 0.54 | 15 | 3.83 | 7.37 | 2.5 | 4.8 | |
| 21 | 0.7 | 0.54 | 0.54 | 15 | 3.83 | 7.37 | 1.4 | 2.8 | |
| 22 | 1.8 | 0.54 | 0.54 | 15 | 3.83 | 7.37 | 3.7 | 7.2 | |
| 23 | 2.7 | 0.54 | 0.54 | 15 | 3.83 | 7.37 | 5.6 | 10.8 | |
| 24 | 0.9 | 0.54 | 0.54 | 15 | 3.83 | 7.37 | 1.9 | 3.6 | |
| 25 | 0.9 | 0.54 | 0.54 | 15 | 3.83 | 7.37 | 1.9 | 3.6 | |
| 26 | 0.9 | 0.54 | 0.54 | 15 | 3.83 | 7.37 | 1.9 | 3.6 | |
| 27 | 2.8 | 0.54 | 0.54 | 15 | 3.83 | 7.37 | 5.4 | 10.3 | |
| 28 | 2.1 | 0.54 | 0.54 | 15 | 3.83 | 7.37 | 4.3 | 8.4 | |
| 29 | 1.8 | 0.54 | 0.54 | 15 | 3.83 | 7.37 | 3.7 | 7.2 | |
| 30 | 1.1 | 0.54 | 0.54 | 15 | 3.83 | 7.37 | 2.3 | 4.4 | |
| 31 | 1.8 | 0.54 | 0.54 | 15 | 3.83 | 7.37 | 3.7 | 7.2 | |



NOTE:
Proposed top of foundation elevations are shown on plans.
Contractor to set finish floor elevation.

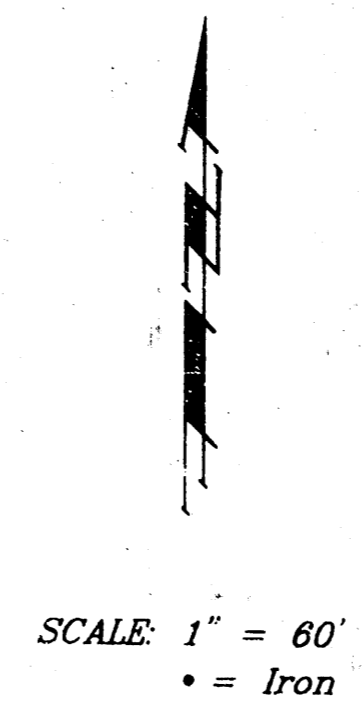
All street elevations shown on plans are for top of curb (full height).

View-out elevations are denoted as XXX V.O.

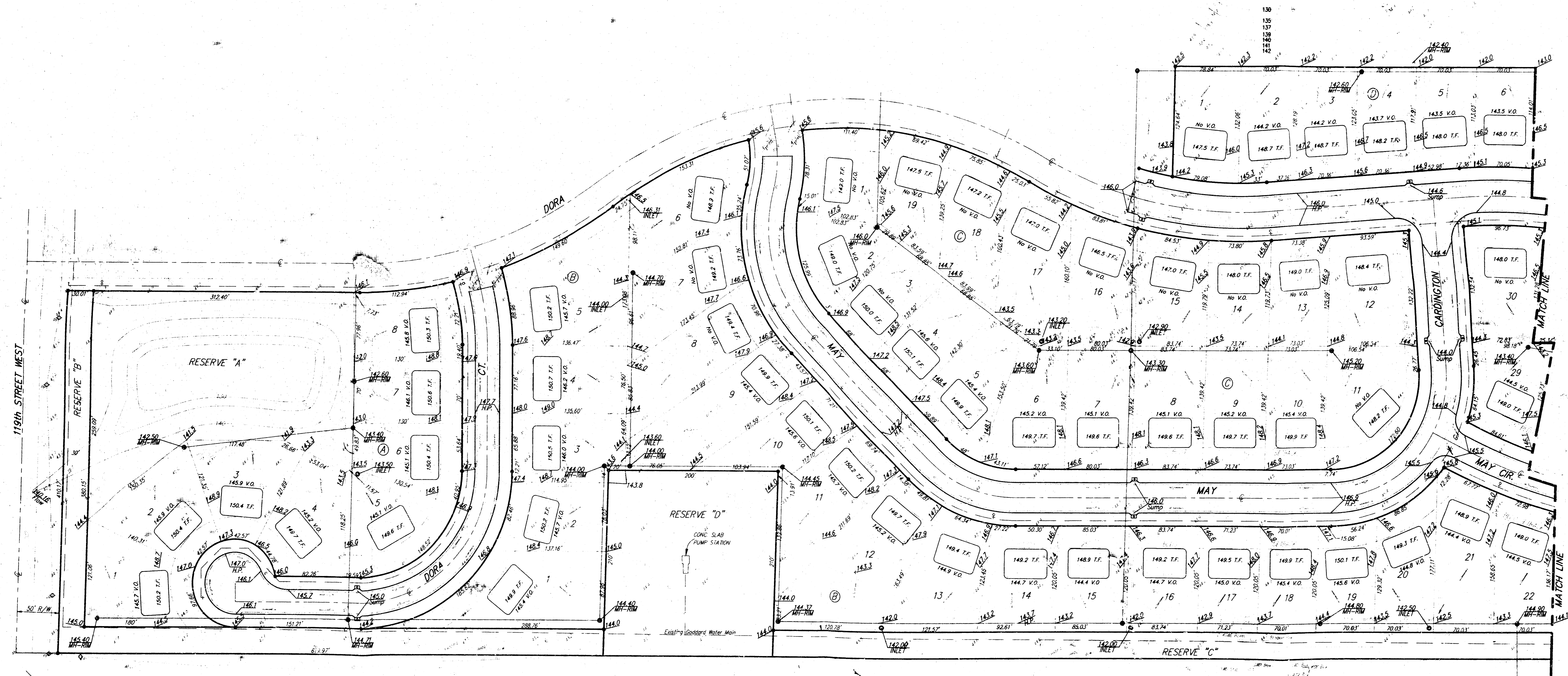
BENCHMARK:
City of Wichita Bench Mark Disc.
N. End of W. Headwall of R.C.B.C.
Lark & May
Elev. = 139.20 (City Datum)

MINIMUM BUILDING PAD ELEVATIONS FOR LOWEST OPENINGS TO THE STRUCTURES ELEVATION

| LOT | BLOCK | CITY DATUM | M.S.L. |
|-------|-------|------------|--------|
| 1-8 | D | 142.0 | 1329.4 |
| 22-24 | F | 142.0 | 1329.4 |
| 31-34 | F | 142.0 | 1329.4 |
| 37-41 | F | 142.0 | 1329.4 |
| 1-8 | A | 142.0 | 1329.4 |



POND DATA:
LEAKY POOL ELEVATION: 139.0 City Datum
BOTTOM ELEVATION: 129.0 City Datum
100 YEAR DESIGN WATER SURFACE: 141.0 City Datum



APPROVED
DRAINAGE PLAN

GRADING PLAN
WICHITA, KS

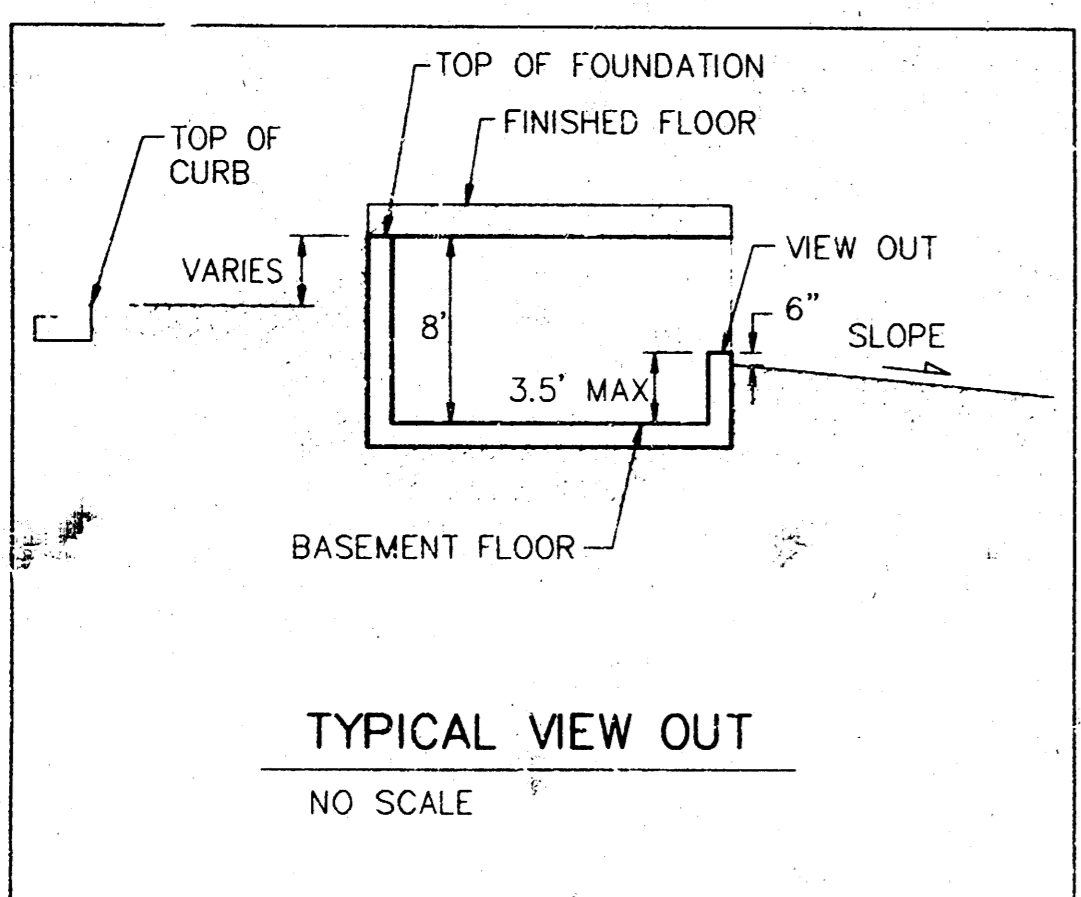
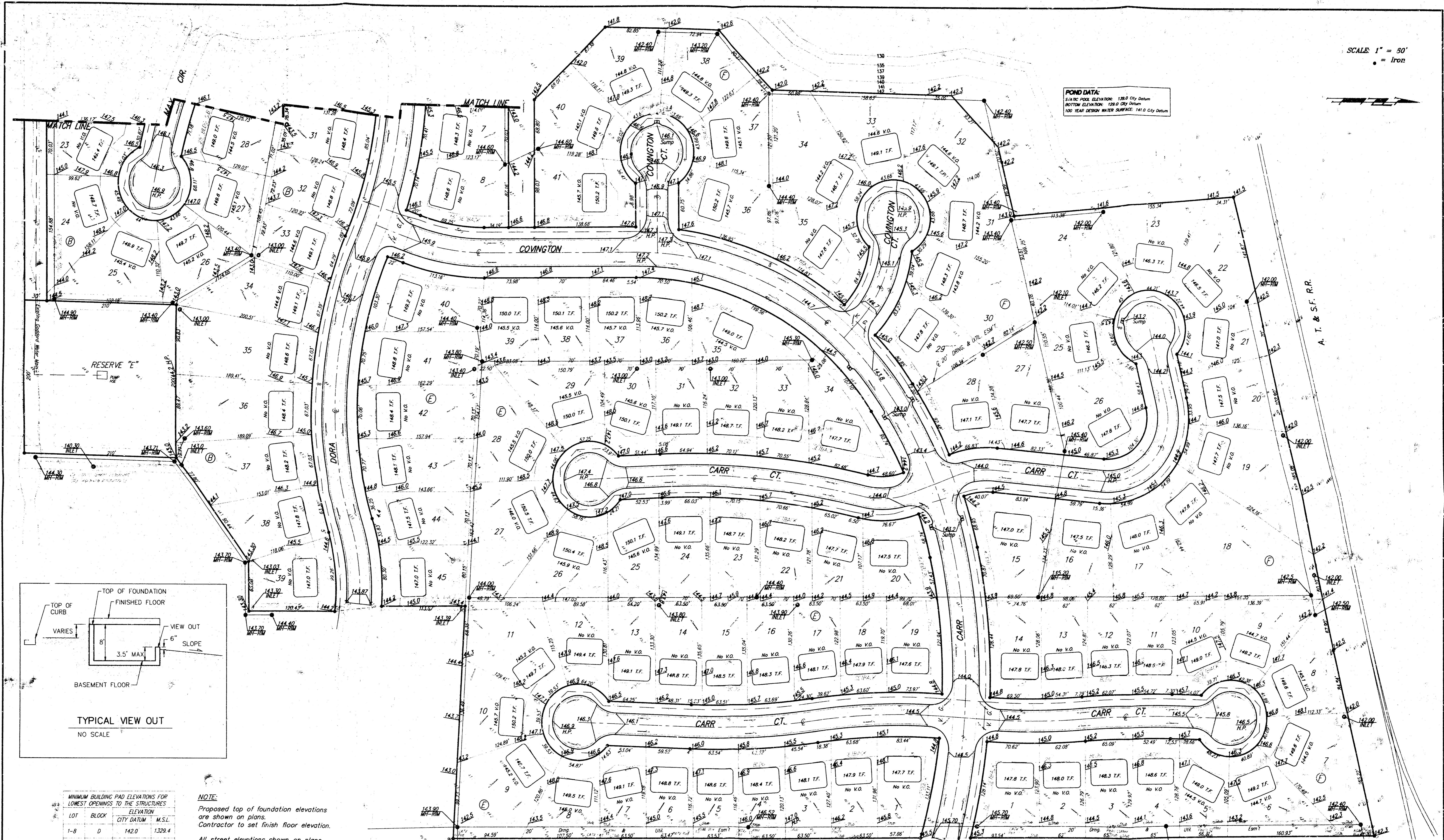
BAUGHMAN COMPANY P. A.
ENGINEERS, SURVEYORS, & PLANNERS

PROJECT NUMBER: _____ SHEET: **1** OF **2**

| | | | | |
|--------|-------|----------|------|-------|
| DESIGN | DRAWN | APPROVED | DATE | SCALE |
| | | | | |

SCALE 1" = 30'
 • = Iron

POND DATA:
 FINISH POOL ELEVATION: 139.0 City Datum
 BOTTOM ELEVATION: 139.0 City Datum
 100 YEAR DESIGN WATER SURFACE: 141.0 City Datum



| LOT | BLOCK | CITY DATUM ELEVATION | M.S.L. |
|-------|-------|----------------------|--------|
| 1-8 | D | 142.0 | 1329.4 |
| 22-24 | F | 142.0 | 1329.4 |
| 31-34 | F | 142.0 | 1329.4 |
| 37-41 | F | 142.0 | 1329.4 |
| 1-6 | A | 142.0 | 1329.4 |

NOTE:
 Proposed top of foundation elevations are shown on plans.
 Contractor to set finish floor elevation.
 All street elevations shown on plans are for top of curb (full height).
 View-out elevations are denoted as XX.X V.O.
BENCHMARK:
 City of Wichita Bench Mark Disc.
 N. End of W. Headwall of R.C.B.C.
 Lark & Moy
 Elev = 139.20 (City Datum)

LARK 9TH ADDITION
GRADING PLAN
 WICHITA, KS

BAUGHMAN COMPANY, P.A.
 ENGINEERING, SURVEYING, & PLANNING
 316-262-7271 • 315 ELM • WICHITA, KANSAS 67211

PROJECT NUMBER: _____ SHEET: **2** OF **2**

DESIGN: BHP DRAWN: FAS/JAK APPROVED: DMV DATE: 12/1/98 SCALE: NOTED