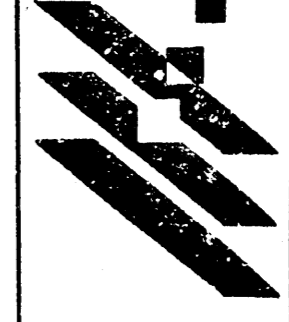


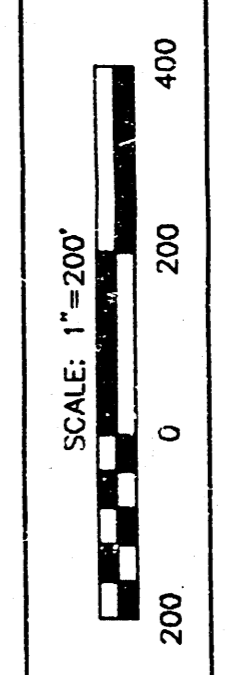
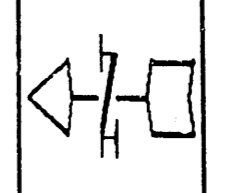
THE LEGACY PROGRAM REPORT  
FIGURE 2 CURRENT LANDFORM  
AUGUST 1994 88288-244

MID-KANSAS ENGINEERING  
CONSULTANTS, INC.  
411 N WEBB ROAD  
WICHITA, KS 67206  
316-684-9600



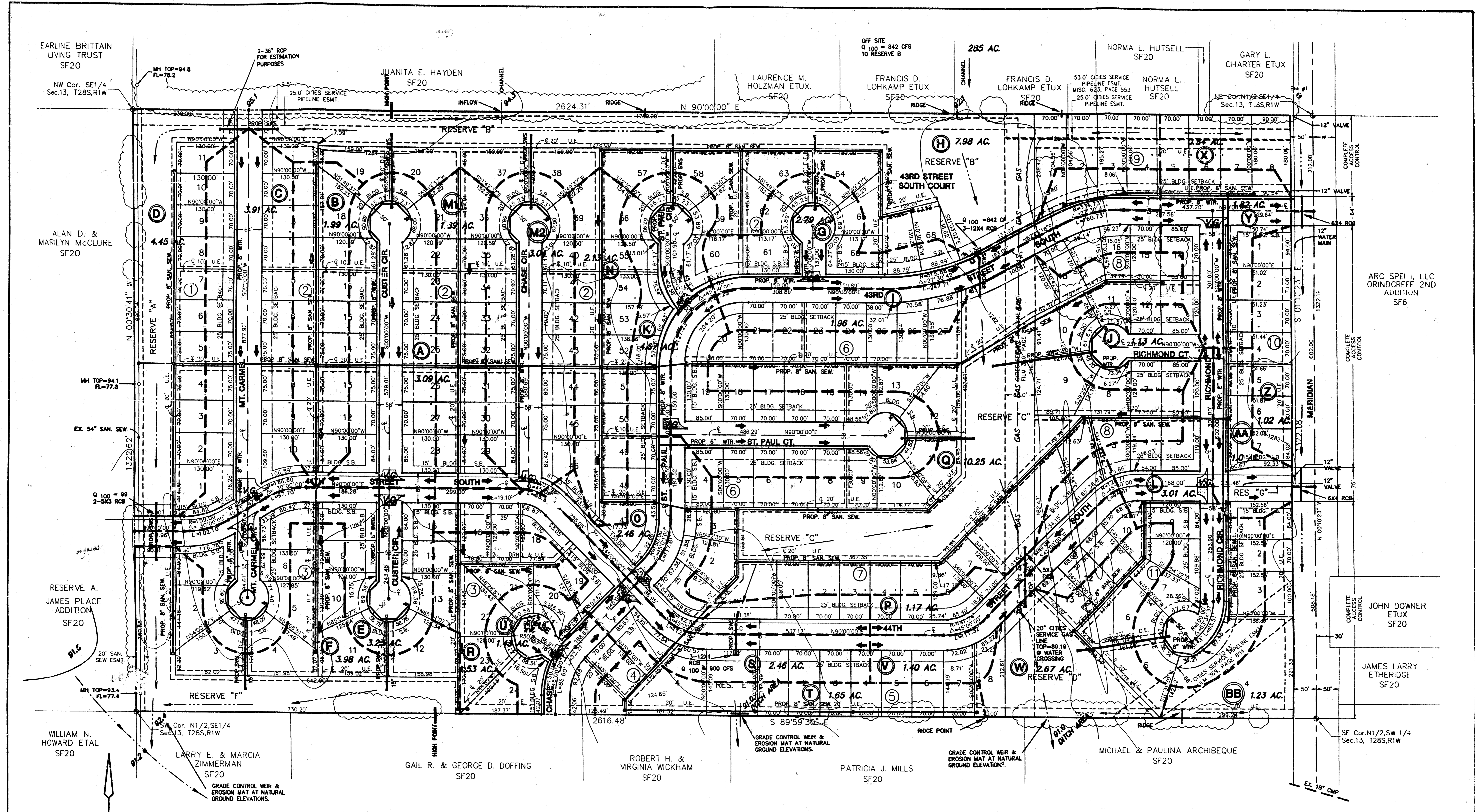
PHOTOGRAPHY BY  
M.J. PHOTOGRAPHY, INC.  
Date of PHOTOGRAPHY: FEB. 4, 1994

WICHITA - SEDGWICK COUNTY KANSAS



REVISIONS:

5242



EARLINE BRITTAIN LIVING TRUST SF20  
NW Cor. SE1/4 Sec.13, T28S,R1W

ALAN D. & MARILYN MCCLURE SF20

RESERVE A. JAMES PLACE ADDITION SF20

WILLIAM N. HOWARD ETAL SF20

JUANITA E. HAYDEN SF20

LAURENCE M. HOLZMAN ETUX. SF20

FRANCIS D. LOHKAMP ETUX SF20

FRANCIS D. LOHKAMP ETUX SF20

NORMA L. HUTSELL SF20

GARY L. CHARTER ETUX SF20

LARRY E. & MARCIA ZIMMERMAN SF20

GAIL R. & GEORGE D. DOFFING SF20

ROBERT H. & VIRGINIA WICKHAM SF20

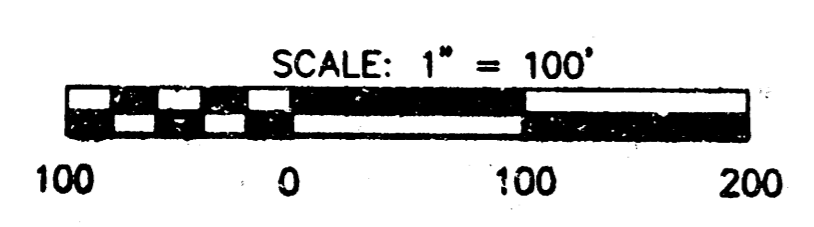
PATRICIA J. MILLS SF20

MICHAEL & PAULINA ARCHIBEQUE SF20

JOHN DOWNER ETUX SF20


JAMES LARRY ETHERIDGE SF20

ARC SPEI, LLC ORINDGREFF 2ND ALIENATION SF6



G:\CIVIL\95138\DRNG\95138.DWG

D:\MKT\95138\DRNG\95138.DWG



**THE LEGACY**  
PROJECT NAME  
**PRELIMINARY DRAINAGE REPORT**  
**FIGURE 5**  
SHEET TITLE

**MKEC PROJ. 951038-344**

MID-KANSAS ENGINEERING CONSULTANTS, INC. 411 N WEBB ROAD WICHITA, KS. 67206 316-684-9600	<table border="0"> <tr> <td>DESIGN BY: <b>GJA/TM</b></td> <td>DRAWN BY: <b>DM</b></td> <td>CHECKED BY: <b>GJA</b></td> </tr> <tr> <td>DATE: <b>JUNE 1993</b></td> <td>PROJECT NO.: <b>95138DNG</b></td> <td>SHEET NO.: <b>1 / 1</b></td> </tr> </table>	DESIGN BY: <b>GJA/TM</b>	DRAWN BY: <b>DM</b>	CHECKED BY: <b>GJA</b>	DATE: <b>JUNE 1993</b>	PROJECT NO.: <b>95138DNG</b>	SHEET NO.: <b>1 / 1</b>	
DESIGN BY: <b>GJA/TM</b>	DRAWN BY: <b>DM</b>	CHECKED BY: <b>GJA</b>						
DATE: <b>JUNE 1993</b>	PROJECT NO.: <b>95138DNG</b>	SHEET NO.: <b>1 / 1</b>						