

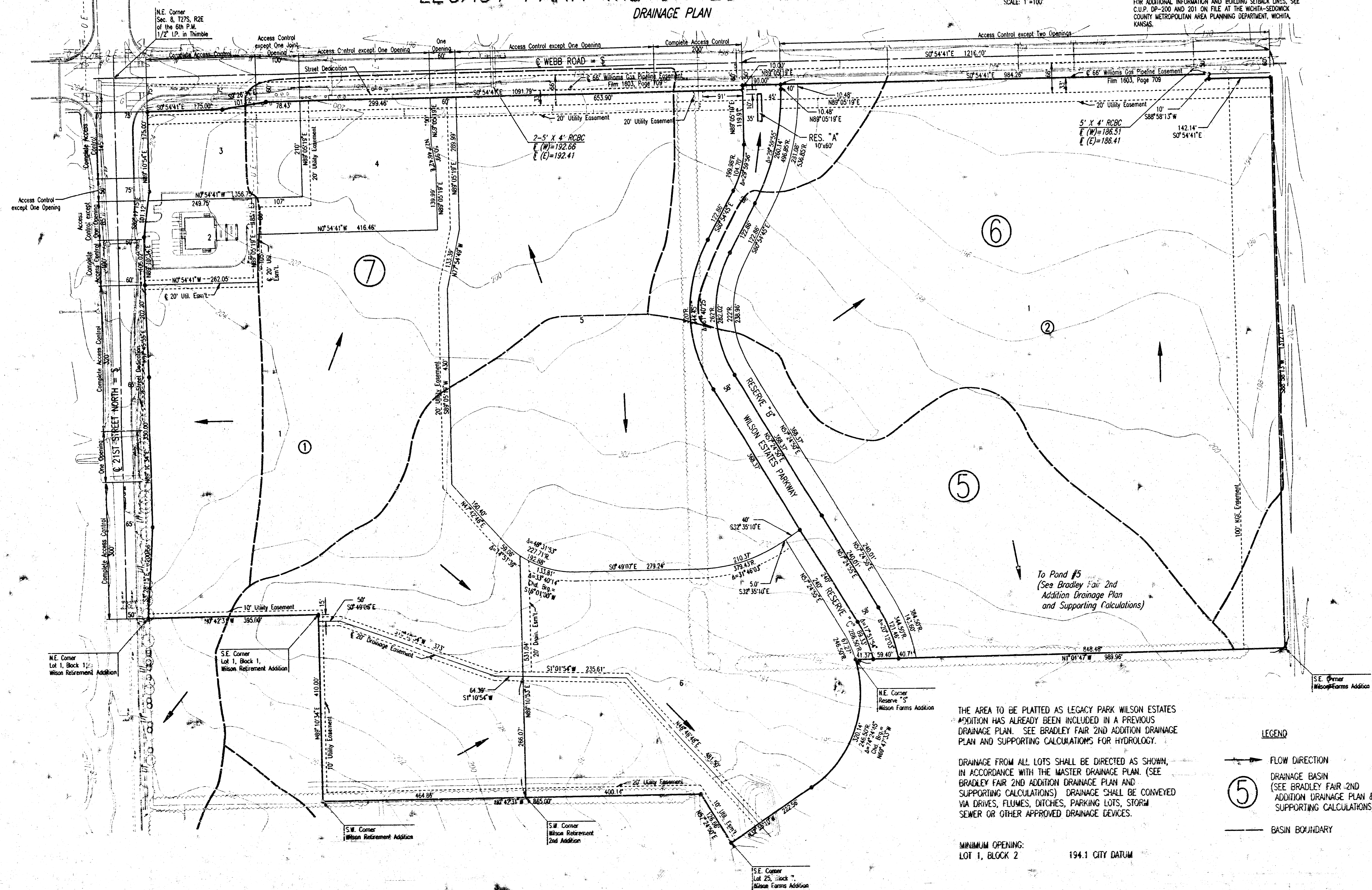
LEGACY PARK WILSON ESTATES ADDITION

DRAINAGE PLAN

B.M. - CITY OF WICHITA BENCH MARK DISC. 44" SOUTH AND 48" EAST OF THE INTERSECTION OF THE CENTERLINES OF WEBB ROAD AND 21ST STREET NORTH.
ELEV.=205.238 CITY DATUM

SCALE: 1"=100'

FOR ADDITIONAL INFORMATION AND BUILDING SETBACK LINES, SEE C.U.P. DP-200 AND 201 ON FILE AT THE WICHITA-SEDOWICK COUNTY METROPOLITAN AREA PLANNING DEPARTMENT, WICHITA, KANSAS.



THE AREA TO BE PLATTED AS LEGACY PARK WILSON ESTATES ADDITION HAS ALREADY BEEN INCLUDED IN A PREVIOUS DRAINAGE PLAN. SEE BRADLEY FAIR 2ND ADDITION DRAINAGE PLAN AND SUPPORTING CALCULATIONS FOR HYDROLOGY.

DRAINAGE FROM ALL LOTS SHALL BE DIRECTED AS SHOWN, IN ACCORDANCE WITH THE MASTER DRAINAGE PLAN. (SEE BRADLEY FAIR 2ND ADDITION DRAINAGE PLAN AND SUPPORTING CALCULATIONS) DRAINAGE SHALL BE CONVEYED VIA DRIVES, FLUMES, DITCHES, PARKING LOTS, STORM SEWER OR OTHER APPROVED DRAINAGE DEVICES.

MINIMUM OPENING:
LOT 1, BLOCK 2 194.1 CITY DATUM

- LEGEND**
- FLOW DIRECTION
 - ⑤ DRAINAGE BASIN (SEE BRADLEY FAIR 2ND ADDITION DRAINAGE PLAN & SUPPORTING CALCULATIONS)
 - BASIN BOUNDARY

C:\Users\p003\Documents\01-13-2000\05-03-13.dwg