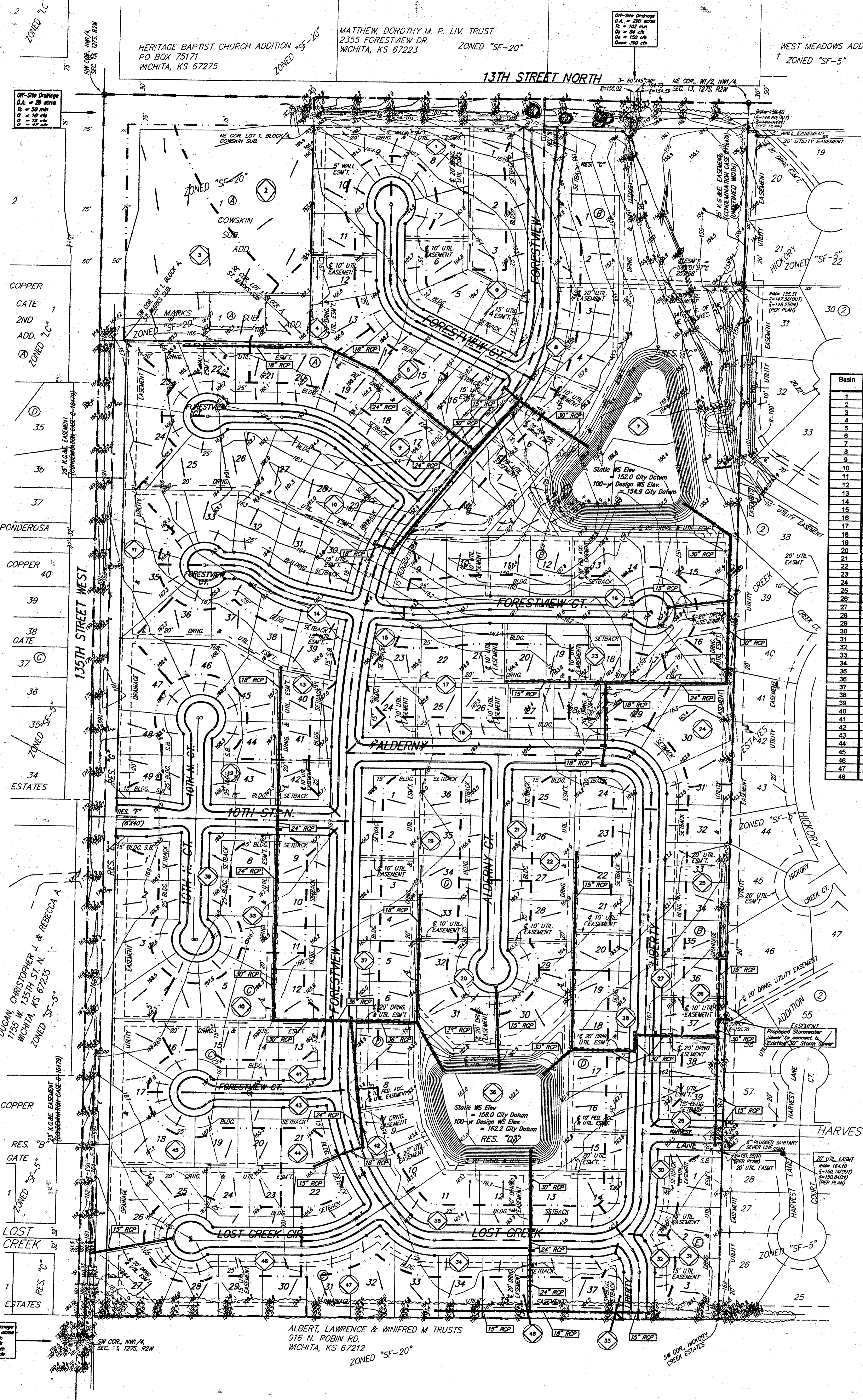


DRAINAGE PLAN LIBERTY PARK 2ND AN ADDITION TO WICHITA, SEDGWICK COUNTY, KANSAS

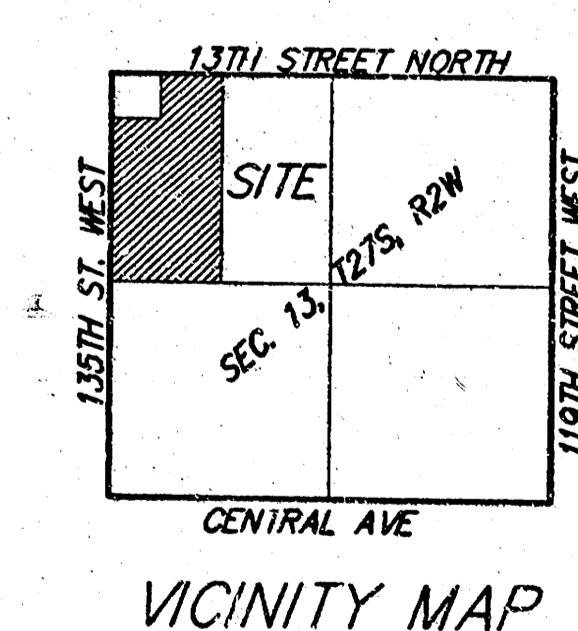


Basin	Area	C2	C5	C100	Q2	Q5	Q100
	ac				cfs	cfs	cfs
1	2.7	0.46	0.49	0.67	4.8	6.9	13
2	1.5	0.46	0.49	0.67	2.8	3.8	7.4
3	2.2	0.46	0.49	0.67	3.9	5.6	11
4	1.1	0.46	0.49	0.67	1.5	2.8	5.4
5	0.7	0.46	0.49	0.67	1.2	1.8	3.5
6	2.0	0.46	0.49	0.67	3.5	5.1	9.9
7	10.4	0.54	0.58	0.72	22	30	55
8	1.8	0.46	0.49	0.67	3.2	4.6	8.9
9	2.7	0.46	0.49	0.67	4.8	6.9	13.3
10	3.7	0.46	0.49	0.67	6.5	9.5	18.3
11	4.0	0.46	0.49	0.67	7.0	10	20
12	1.8	0.46	0.49	0.67	3.2	4.6	8.9
13	1.8	0.46	0.49	0.67	3.2	4.6	8.9
14	1.3	0.46	0.49	0.67	2.3	3.3	6.4
15	0.4	0.46	0.49	0.67	0.7	1.0	2.0
16	2.1	0.46	0.49	0.67	3.7	5.4	10
17	1.4	0.46	0.49	0.67	2.3	3.3	6.4
18	1.3	0.46	0.49	0.67	2.3	3.3	6.4
19	1.4	0.46	0.49	0.67	2.3	3.3	6.4
20	1.0	0.46	0.49	0.67	1.8	2.6	4.9
21	1.7	0.46	0.49	0.67	3.0	4.3	8.4
22	1.5	0.46	0.49	0.67	2.8	4.1	7.9
23	0.7	0.46	0.49	0.67	1.2	1.8	3.5
24	0.9	0.46	0.49	0.67	1.6	2.3	4.4
25	0.8	0.46	0.49	0.67	1.4	2.0	4.0
26	0.7	0.46	0.49	0.67	1.2	1.8	3.5
27	1.2	0.46	0.49	0.67	2.1	3.1	5.9
28	1.8	0.46	0.49	0.67	3.2	4.6	8.9
29	0.7	0.46	0.49	0.67	1.2	1.8	3.5
30	0.5	0.46	0.49	0.67	0.9	1.3	2.5
31	0.8	0.46	0.49	0.67	1.4	2.0	4.0
32	0.3	0.46	0.49	0.67	0.5	0.8	1.5
33	0.2	0.46	0.49	0.67	0.4	0.5	1.0
34	1.2	0.46	0.49	0.67	2.1	3.1	5.9
35	0.8	0.46	0.49	0.67	1.4	2.0	4.0
36	5.1	0.57	0.61	0.74	11	16	28
37	1.0	0.46	0.49	0.67	1.8	2.6	4.9
38	0.8	0.46	0.49	0.67	1.4	2.0	4.0
39	1.6	0.46	0.49	0.67	2.8	4.1	7.9
40	1.4	0.46	0.49	0.67	2.5	3.6	6.9
41	1.4	0.46	0.49	0.67	2.5	3.6	6.9
42	0.4	0.46	0.49	0.67	0.7	1.0	2.0
43	1.1	0.46	0.49	0.67	1.9	2.8	5.4
44	0.4	0.46	0.49	0.67	0.7	1.0	2.0
45	5.0	0.46	0.49	0.67	8.8	13	25
46	1.1	0.46	0.49	0.67	1.9	2.8	5.4
47	0.8	0.46	0.49	0.67	1.4	2.0	4.0
48	0.5	0.46	0.49	0.67	0.9	1.3	2.5

BENCHMARK:
135th St. W. & 13th St. N. - City of Wichita Benchmark Disc. SE corner of intersection.
56' East of Centerline
55' North of Centerline
Elev. = 162.83 City Datum
(1355.23 NGVD29)

60d N. 8 in High Line Pole, 800' W. & 31' N. of the NE cor., NW 1/4, Sec. 13, Twp. 27-S, R-2-W
Elev. = 1350.08 NGVD29
(162.68 City Datum)

LOT	BLOCK	ELEVATION CITY DATUM
1-15	B	156.5
5-20, 29-32	D	163.5



NOTE:
A master grading plan for drainage has been developed for this subdivision and is on file with the City of Wichita, Kansas. All drainage assessments, rights-of-way, or reserves shall remain as established or as modified with the approval of the City Engineer of the City of Wichita, Kansas. No obstructions which impede the flow of this drainage system shall be allowed.

NOTE:
This is a re-plot of Liberty Park Addition. Detailed calculations have not been performed. The new layout incorporates the general intent of the original subdivision. For review of detailed calculations please refer to the drainage plan that was submitted with the Liberty Park Addition.