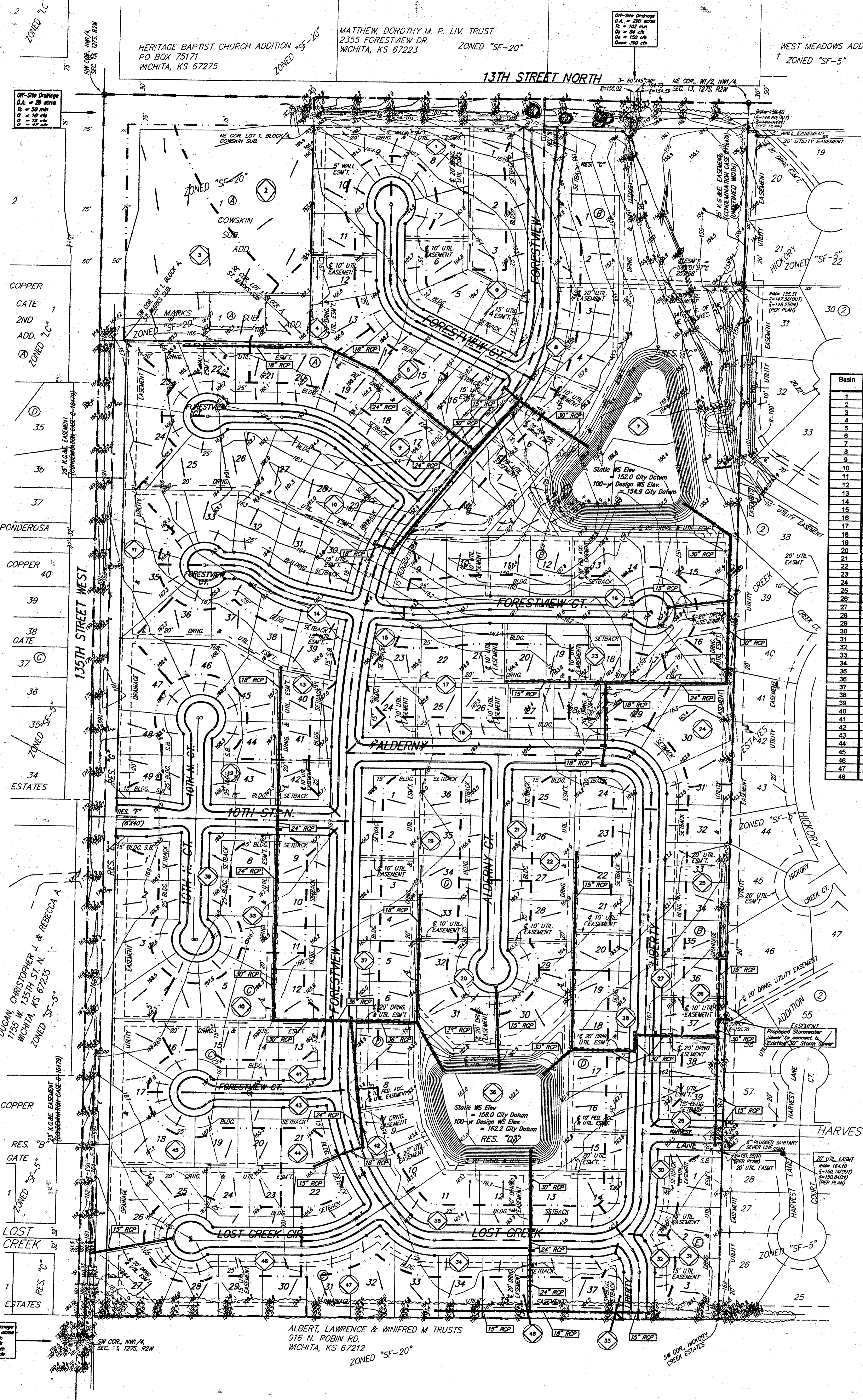


DRAINAGE PLAN LIBERTY PARK 2ND AN ADDITION TO WICHITA, SEDGWICK COUNTY, KANSAS

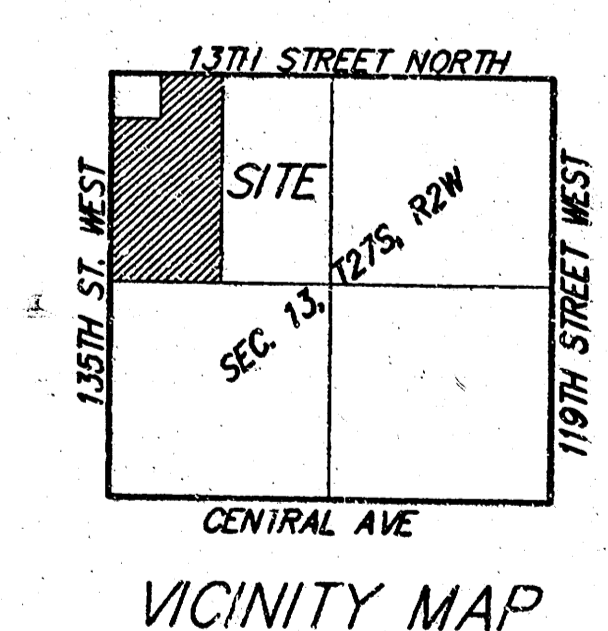


Basin	Area	C2	C5	C100	Q2	Q5	Q100
	ac				cfs	cfs	cfs
1	2.7	0.46	0.49	0.67	4.8	6.9	13
2	1.5	0.46	0.49	0.67	2.8	3.8	7.4
3	2.2	0.46	0.49	0.67	3.9	5.6	11
4	1.1	0.46	0.49	0.67	1.5	2.8	5.4
5	0.7	0.46	0.49	0.67	1.2	1.8	3.5
6	2.0	0.46	0.49	0.67	3.5	5.1	9.9
7	10.4	0.54	0.58	0.72	22	30	55
8	1.8	0.46	0.49	0.67	3.2	4.6	8.9
9	2.7	0.46	0.49	0.67	4.8	6.9	13.3
10	3.7	0.46	0.49	0.67	6.5	9.5	18.3
11	4.0	0.46	0.49	0.67	7.0	10	20
12	1.8	0.46	0.49	0.67	3.2	4.6	8.9
13	1.8	0.46	0.49	0.67	3.2	4.6	8.9
14	1.3	0.46	0.49	0.67	2.3	3.3	6.4
15	0.4	0.46	0.49	0.67	0.7	1.0	2.0
16	2.1	0.46	0.49	0.67	3.7	5.4	10
17	1.4	0.46	0.49	0.67	2.3	3.3	6.4
18	1.3	0.46	0.49	0.67	2.3	3.3	6.4
19	1.4	0.46	0.49	0.67	2.3	3.3	6.4
20	1.0	0.46	0.49	0.67	1.8	2.6	4.9
21	1.7	0.46	0.49	0.67	3.0	4.3	8.4
22	1.9	0.46	0.49	0.67	3.2	4.6	8.9
23	0.7	0.46	0.49	0.67	1.2	1.8	3.5
24	0.9	0.46	0.49	0.67	1.6	2.3	4.4
25	0.8	0.46	0.49	0.67	1.4	2.0	4.0
26	0.7	0.46	0.49	0.67	1.2	1.8	3.5
27	1.2	0.46	0.49	0.67	2.1	3.1	5.9
28	1.8	0.46	0.49	0.67	3.2	4.6	8.9
29	0.7	0.46	0.49	0.67	1.2	1.8	3.5
30	0.5	0.46	0.49	0.67	0.9	1.3	2.5
31	0.8	0.46	0.49	0.67	1.4	2.0	4.0
32	0.3	0.46	0.49	0.67	0.5	0.8	1.5
33	0.2	0.46	0.49	0.67	0.4	0.5	1.0
34	1.2	0.46	0.49	0.67	2.1	3.1	5.9
35	0.8	0.46	0.49	0.67	1.4	2.0	4.0
36	5.1	0.57	0.61	0.74	11	16	28
37	1.0	0.46	0.49	0.67	1.8	2.6	4.9
38	0.8	0.46	0.49	0.67	1.4	2.0	4.0
39	1.6	0.46	0.49	0.67	2.8	4.1	7.9
40	1.4	0.46	0.49	0.67	2.5	3.6	6.9
41	1.4	0.46	0.49	0.67	2.5	3.6	6.9
42	0.4	0.46	0.49	0.67	0.7	1.0	2.0
43	1.1	0.46	0.49	0.67	1.9	2.8	5.4
44	0.4	0.46	0.49	0.67	0.7	1.0	2.0
45	5.0	0.46	0.49	0.67	8.8	13	25
46	1.1	0.46	0.49	0.67	1.9	2.8	5.4
47	0.8	0.46	0.49	0.67	1.4	2.0	4.0
48	0.5	0.46	0.49	0.67	0.9	1.3	2.5

BENCHMARK:
135th St. W. & 13th St. N. - City of Wichita Benchmark Disc. SE corner of intersection.
56' East of Centerline
55' North of Centerline
Elev. = 162.83 City Datum
(1355.23 NGVD29)

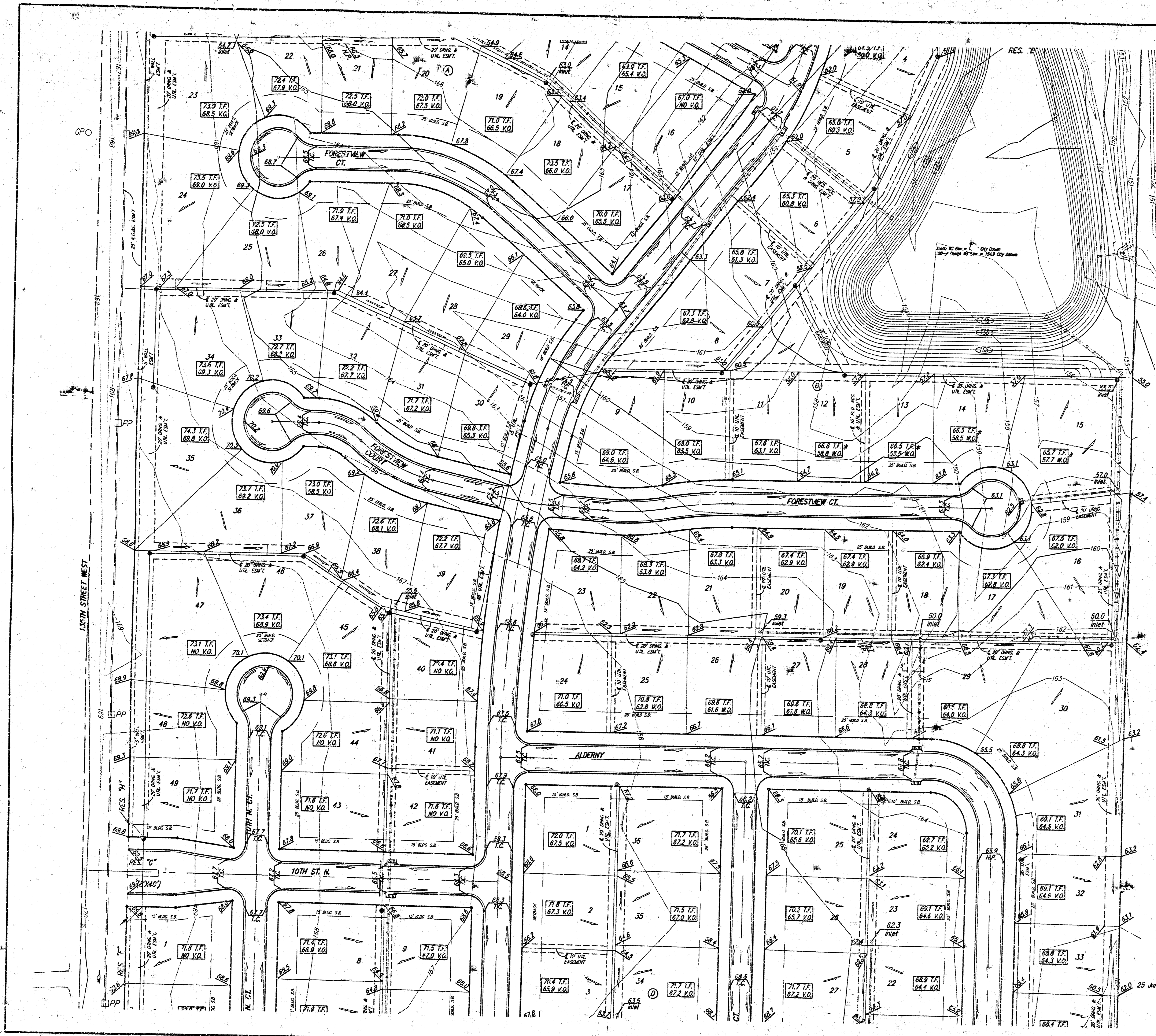
60d N. 8 in High Line Pole, 800' W. & 31' N. of the NE cor., NW 1/4, Sec. 13, Twp. 27-S, R-2-W
Elev. = 1350.08 NGVD29
(162.68 City Datum)

LOT	BLOCK	ELEVATION CITY DATUM
1-15	B	156.5
5-20, 29-32	D	163.5



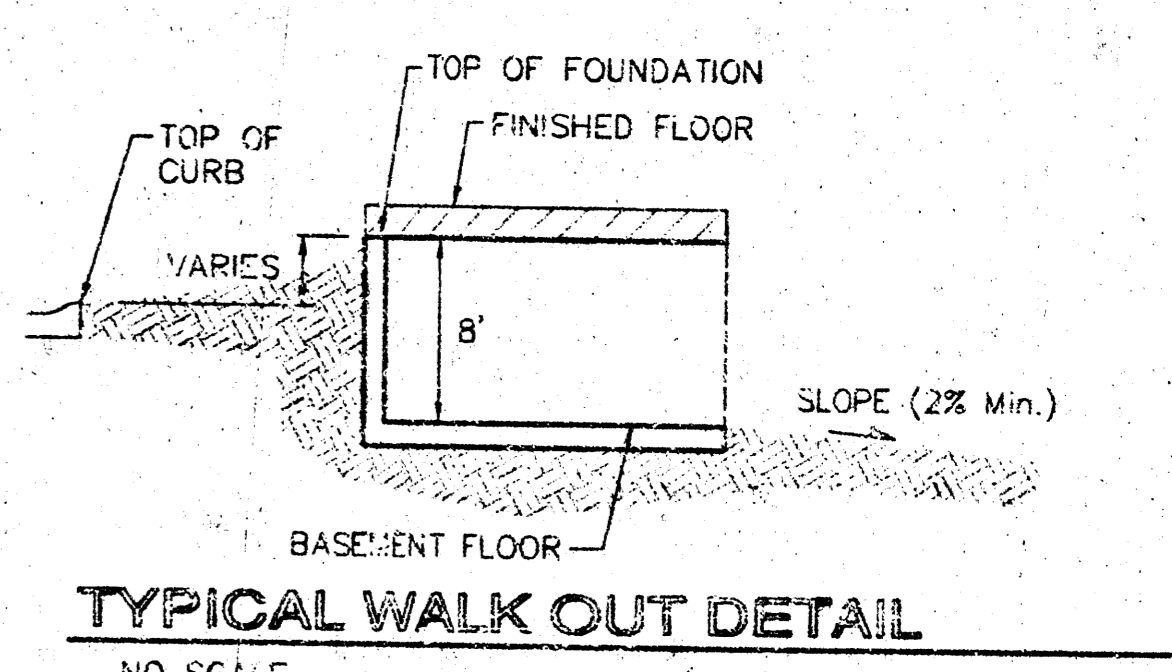
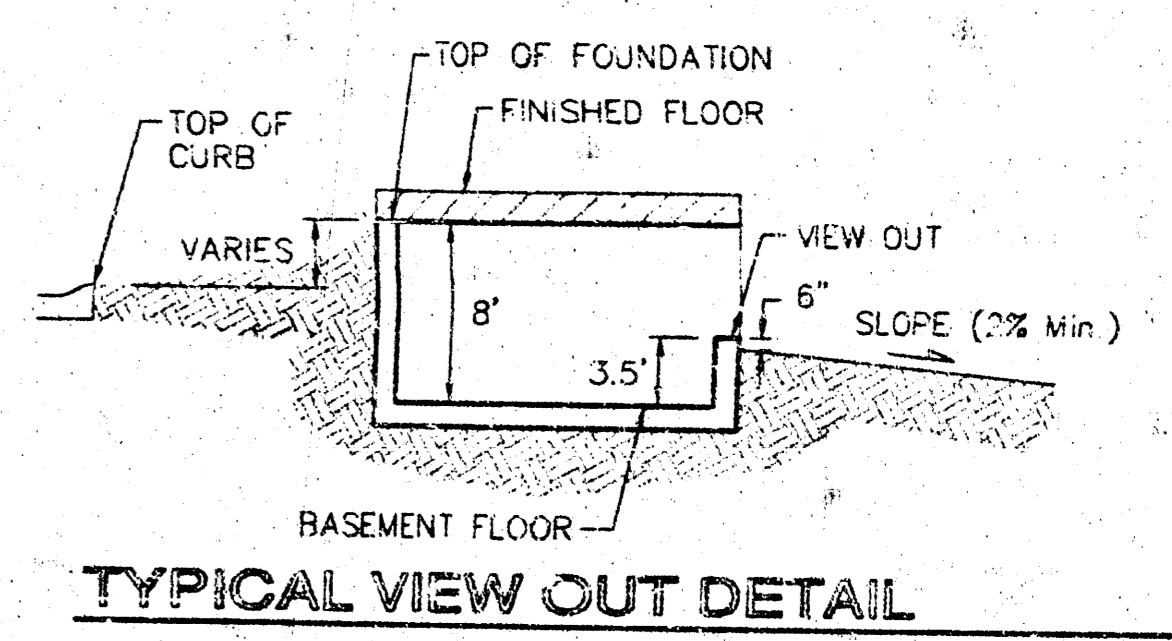
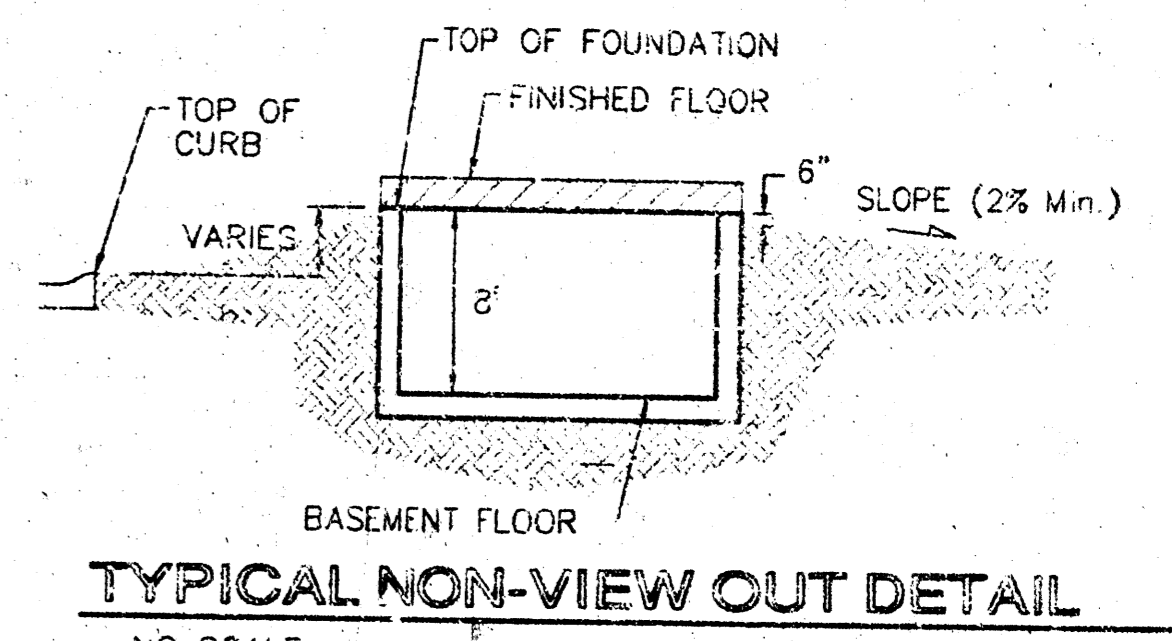
NOTE:
A master grading plan for drainage has been developed for this subdivision and is on file with the City of Wichita, Kansas. All drainage assessments, rights-of-way, or reserves shall remain as established or as modified with the approval of the City Engineer of the City of Wichita, Kansas. No obstructions which impede the flow of this drainage system shall be allowed.

NOTE:
This is a re-plot of Liberty Park Addition. Detailed calculations have not been performed. The new layout incorporates the general intent of the original subdivision. For review of detailed calculations please refer to the drainage plan that was submitted with the Liberty Park Addition.



BENCHMARK
 County 600' not in K.L.P. 800' west &
 31' north of the NE cor., NW 1/4 Sec.
 12, Twp. 27-S, R-2-W of the 6th
 P.M.
 Elev=152.88 City Datum
 1350.08 N.G.V. 29

MINIMUM BUILDING PAD ELEVATIONS FOR LOWEST OPENING TO THE STRUCTURES		
LOT	BLUCK	ELEVATION
1-19	B	156.5
6-22, 33-36	D	157.5



NOTES:
 Proposed Top of Foundation Elevations Are Shown On Plans. Contractor to Set Finished Floor Elevations.
 All Street Elevations Shown on Plans Are for Top of Curb (Full-Height).
 This Grading Plan is Designed with View-Outs. Elevations Shown at Rear of House (XX.X V.O.)
 Lot dimensions have been omitted on this plan, refer to the recorded plat for this information.

* Indicates extra deep foundation may be required

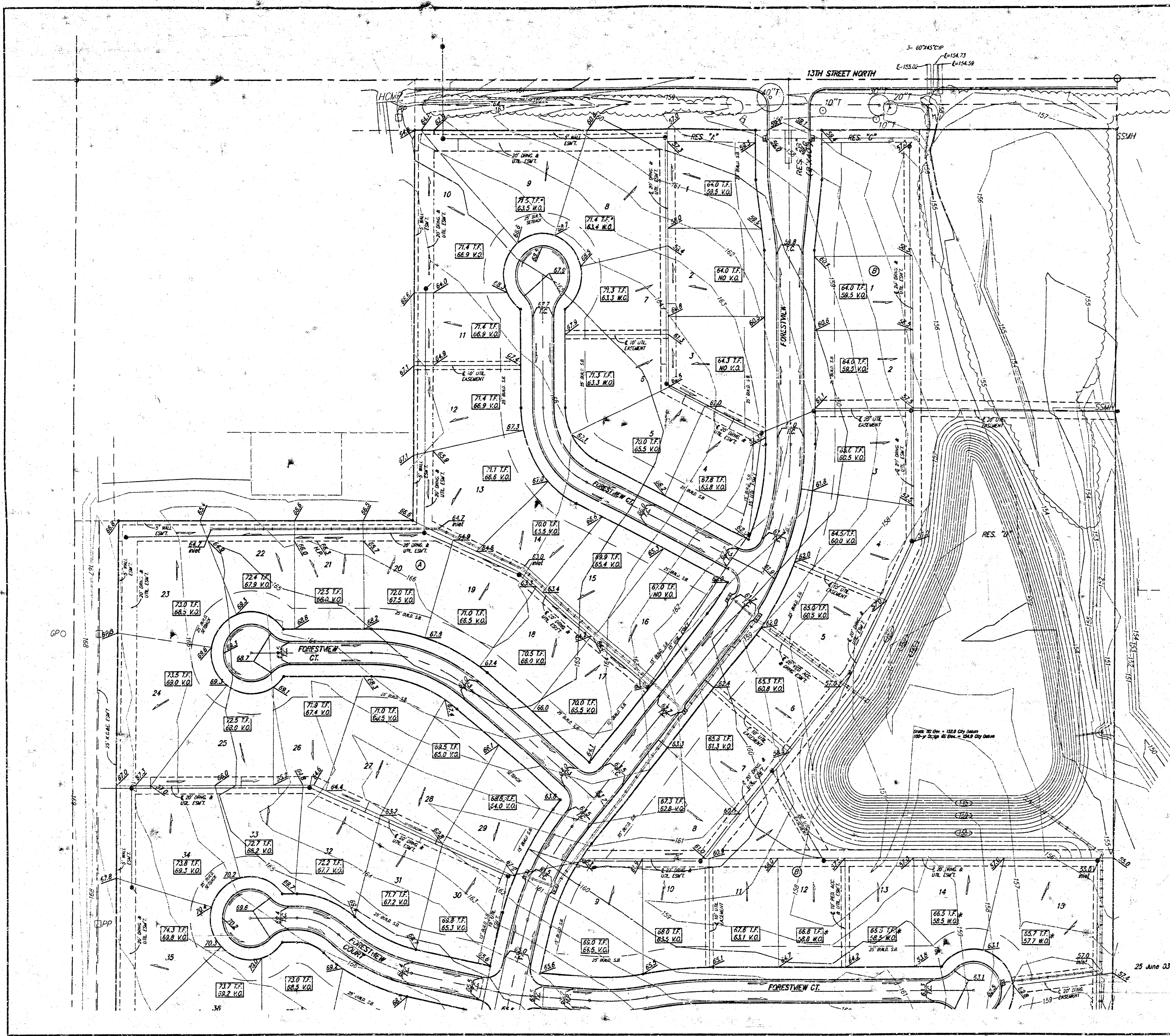
LIBERTY PARK 2nd ADDITION
GRADING PLAN
 WICHITA, KANSAS

BAUGHMAN COMPANY P.A.
 ENGINEERING, SURVEYING, & PLANNING
 315-282-2221 • 315-282-2222 • WICHITA, KANSAS 67211

PROJECT NUMBER: _____ SHEET: **23**

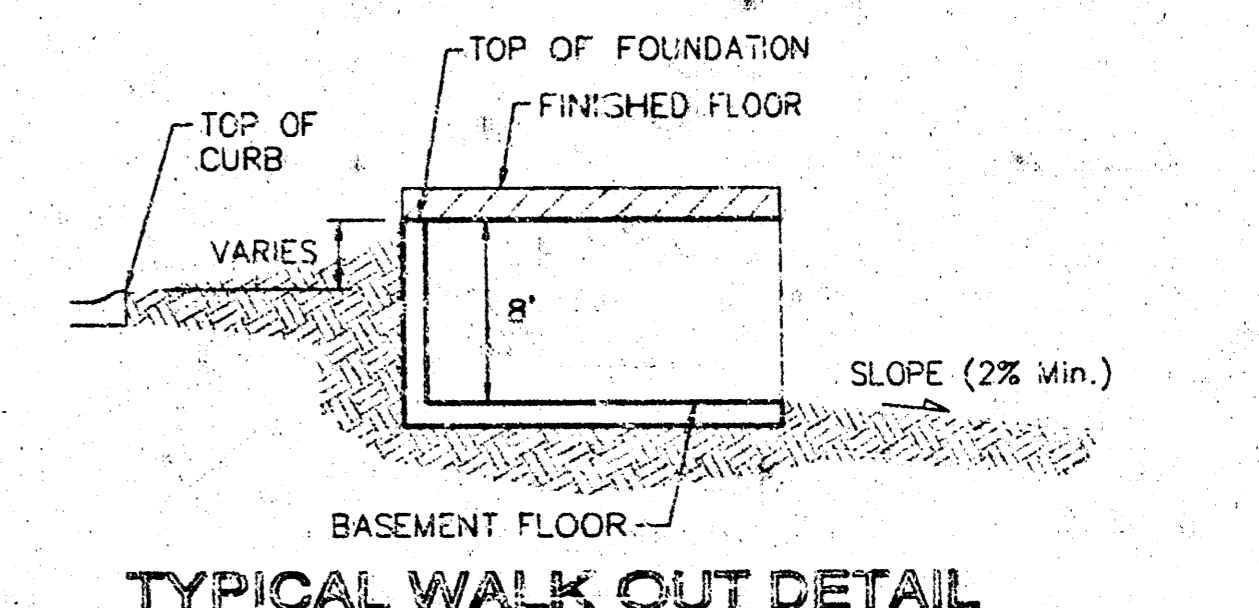
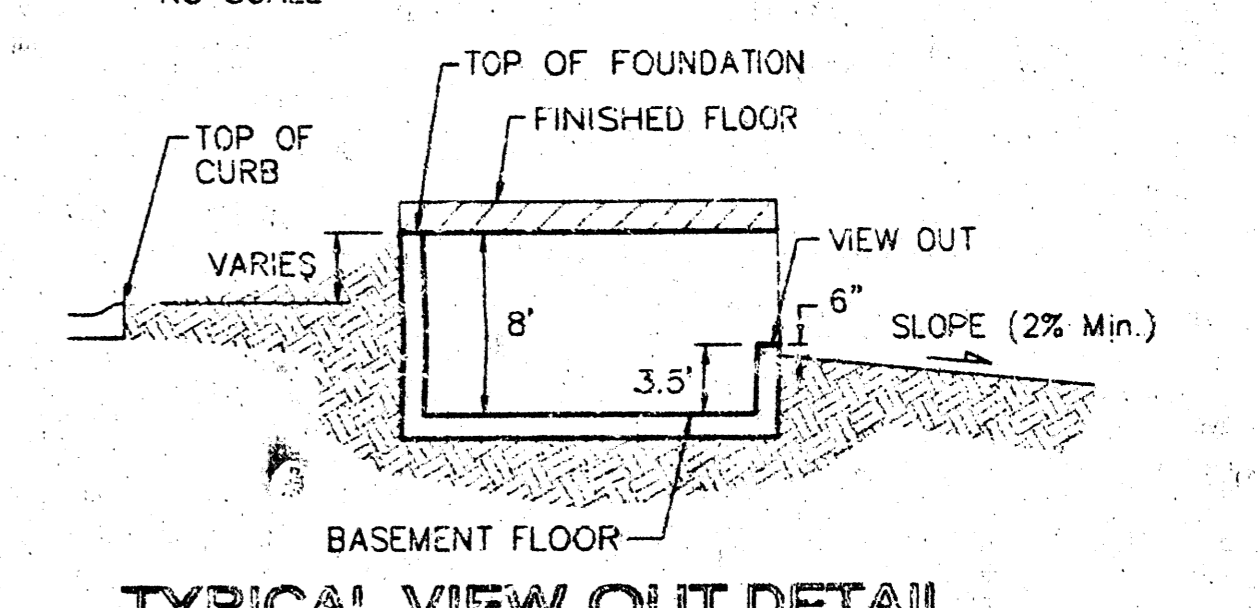
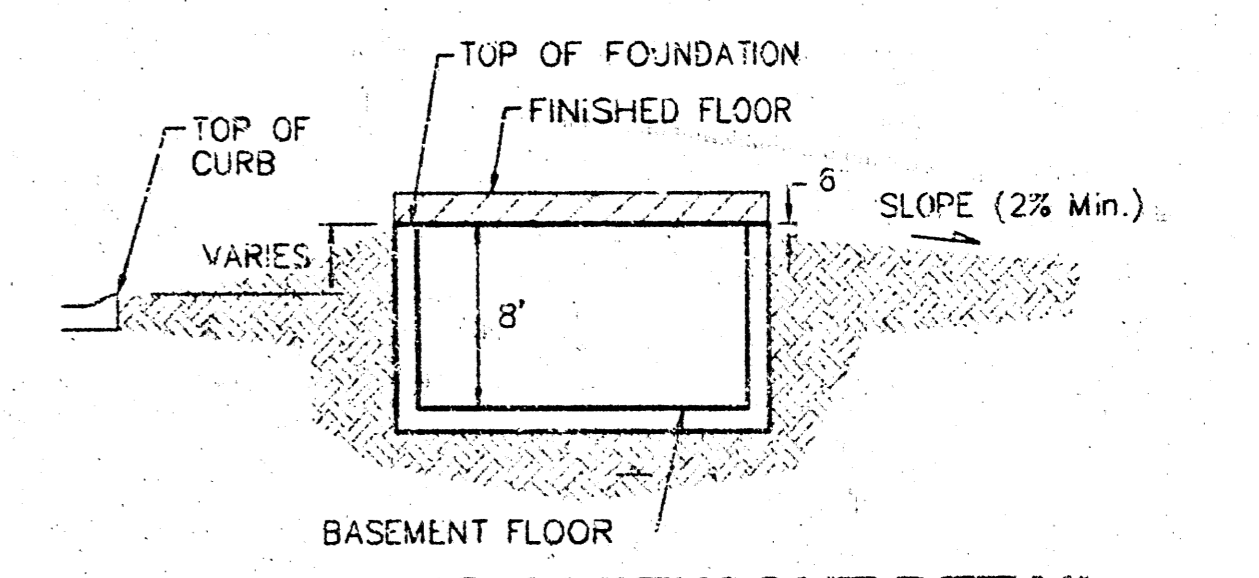
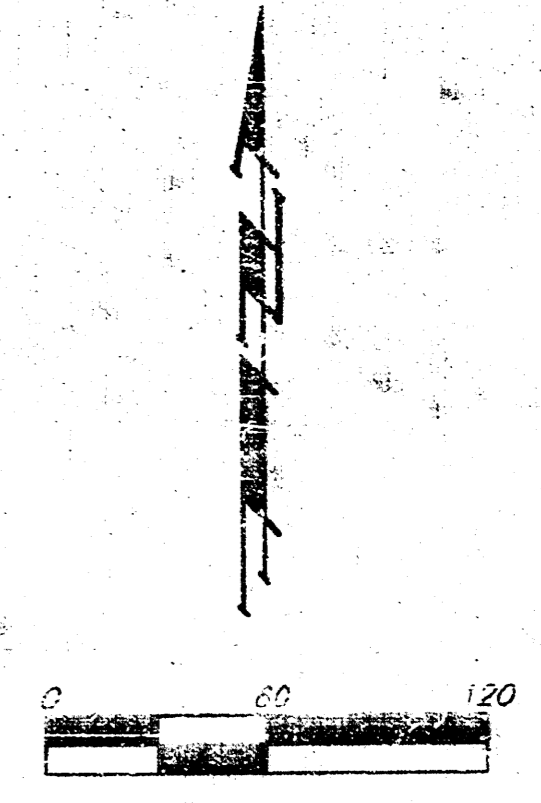
DESIGN: B.L.G.	DRAWN: B.L.G.	APPROVED: _____	DATE: 03/24/03	SCALE: NOTED	OF: 3
----------------	---------------	-----------------	----------------	--------------	-------

25 June 03 revised house elev by SMD per NEM
 26 A: Lots 2, 17-21, 29, 34, 39-39
 26 B: Lots 5-9



GENERAL: County 604 north on S.L.P. 800' west & 31' north of the NE cor. NW 1/4, Sec. 13, Twp. 27-S, R-2-W of the 6th P.M. Elev. 162.88 City Datum 1350.09 H.G. V.O. 29

MINIMUM BUILDING PAD ELEVATIONS FOR LOWEST OPENING TO THE STRUCTURES		
LOT	BLOCK	ELEVATION CITY DATUM
1-19	B	156.5
6-22, 33-36	D	163.5



NOTES:
Proposed Top of Foundation Elevations Are Shown On Plans. Contractor to Set Finished Floor Elevations.
All Street Elevations Shown on Plans Are for Top of Curb (Full-Height).
This Grading Plan is Designed with View-Outs. Elevations Shown at Rear of House (X.X.X V.O.).
Lot dimensions have been omitted on this plan, refer to the recorded plat for this information.

LIBERTY PARK 2nd ADDITION GRADING PLAN
WICHITA, KANSAS

BAUGHMAN COMPANY P.A.
ENGINEERING, SURVEYING, & PLANNING
316-267-1271 • 315 ELLIS • WICHITA, KANSAS 67211

PROJECT NUMBER: _____ SHEET: **3**

DESIGN: BLG	DRAWN: BLG/SMD	APPROVED: _____	DATE: 06/25/03	SCALE: NOTED
-------------	----------------	-----------------	----------------	--------------

25 June 03 revised house elev by SMD per NWH
2R A: Lots 2, 17-21, 24, 34, 38-39
2R B: Lots 5-9