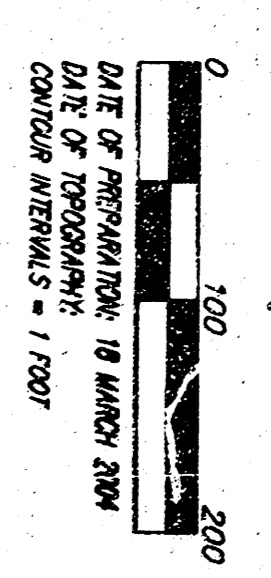
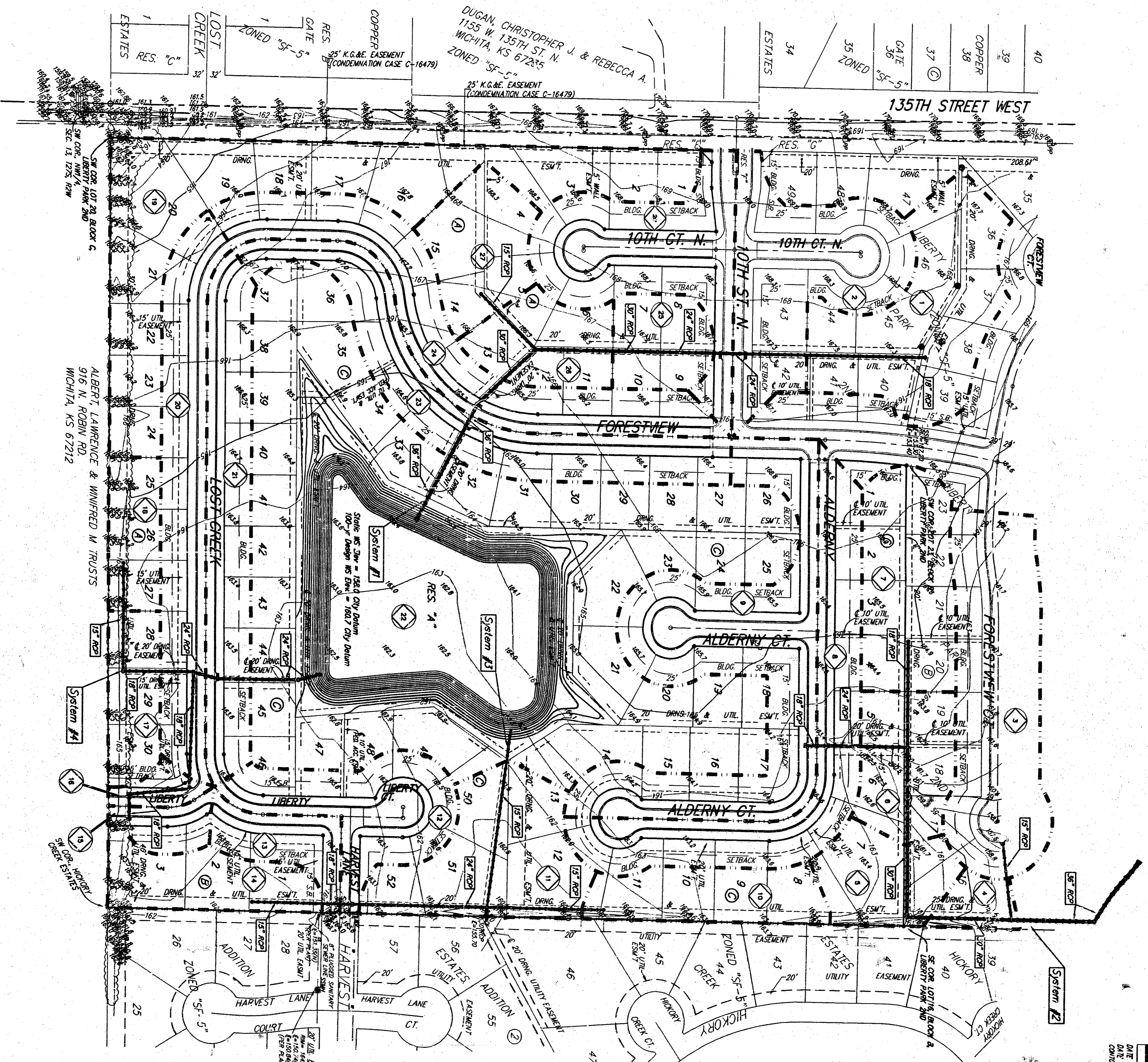
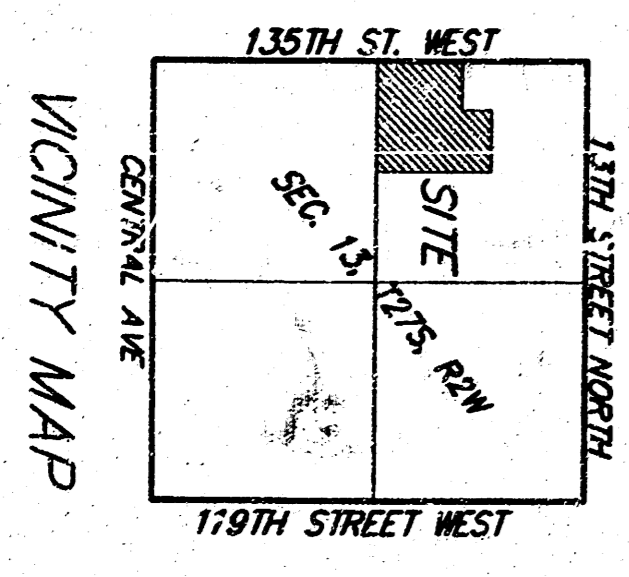


# DRAINAGE PLAN LIBERTY PARK 3RD AN ADDITION TO WICHITA, SEDGWICK COUNTY, KANSAS



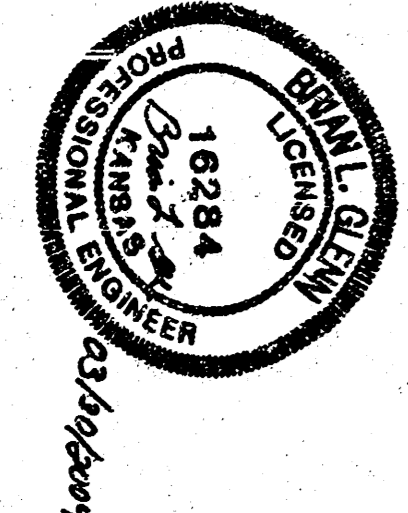
ANNUAL BUILDING LOAD ESTIMATIONS FOR (LATEST) DESIGN TO THE STRUCTURES	LOT	ROOM	ELEVATION	DTF DRAIN
1214, 20-23	C		1633	
29-33, 38-43	C		1633	
47-50	C		1633	



Basin ID	Area acres	Regional Watershed, CO		Peak Loadings	
		24yr	100-yr	24yr	100-yr
1	1.8	0.49	0.70	3.2	4.0
2	1.7	0.46	0.70	3.0	3.8
3	2.1	0.48	0.70	3.7	4.7
4	0.7	0.46	0.70	1.4	1.0
5	0.7	0.46	0.70	1.6	2.0
6	0.9	0.46	0.70	1.9	4.5
7	1.3	0.46	0.70	2.3	6.7
8	1.9	0.46	0.70	3.3	9.8
9	1.4	0.46	0.70	2.5	4.9
10	0.8	0.46	0.70	1.8	1.4
11	1.4	0.46	0.70	2.5	3.1
12	1.2	0.46	0.70	2.1	6.2
13	0.3	0.46	0.70	0.9	1.1
14	0.3	0.46	0.70	0.9	2.8
15	0.3	0.46	0.70	0.4	4.3
16	0.2	0.46	0.70	0.4	0.4
17	0.6	0.46	0.70	1.1	1.3
18	0.5	0.46	0.70	0.9	3.1
19	0.6	0.46	0.70	0.9	7.6
20	0.3	0.46	0.70	0.5	1.5
21	1.5	0.46	0.70	2.9	3.4
22	1.7	0.46	0.70	3.0	8.9
23	10.7	0.63	0.78	25	31
24	1.7	0.46	0.70	3.0	8.9
25	0.8	0.46	0.70	1.2	4.0
26	0.7	0.46	0.70	1.2	1.6
27	0.8	0.46	0.70	1.4	3.6
28	1.6	0.46	0.70	2.8	8.5

**BENCHMARK:**  
 170th St. W. & 13th St. N. - City of  
 Wichita Development Dist. SE corner of  
 555 South of Constitution  
 555 South of Constitution  
 555 South of Constitution  
 Date = (1555.23 160209)

**REMARK:**  
 600' High in High Line Poles 600' W. &  
 37' N. of the NE cor. NW 1/4 Sec. 13  
 T29N R20E S10W  
 (1523.88 City Datum)



**BAUGHMAN COMPANY P.A.**  
 ENGINEERING SURVEYING AND PLANNING  
 3015 SOUTH WICHITA AVENUE, SUITE 200  
 WICHITA, KANSAS 67211  
 30 MARCH 2004