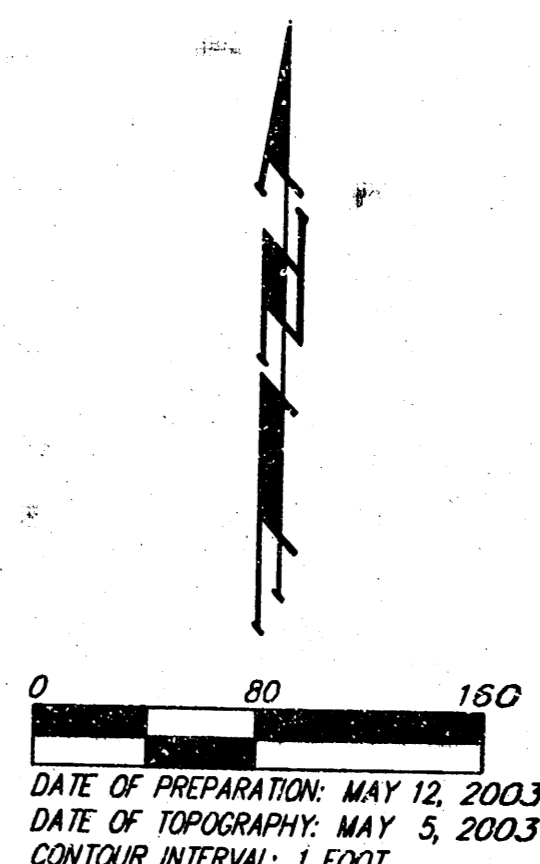
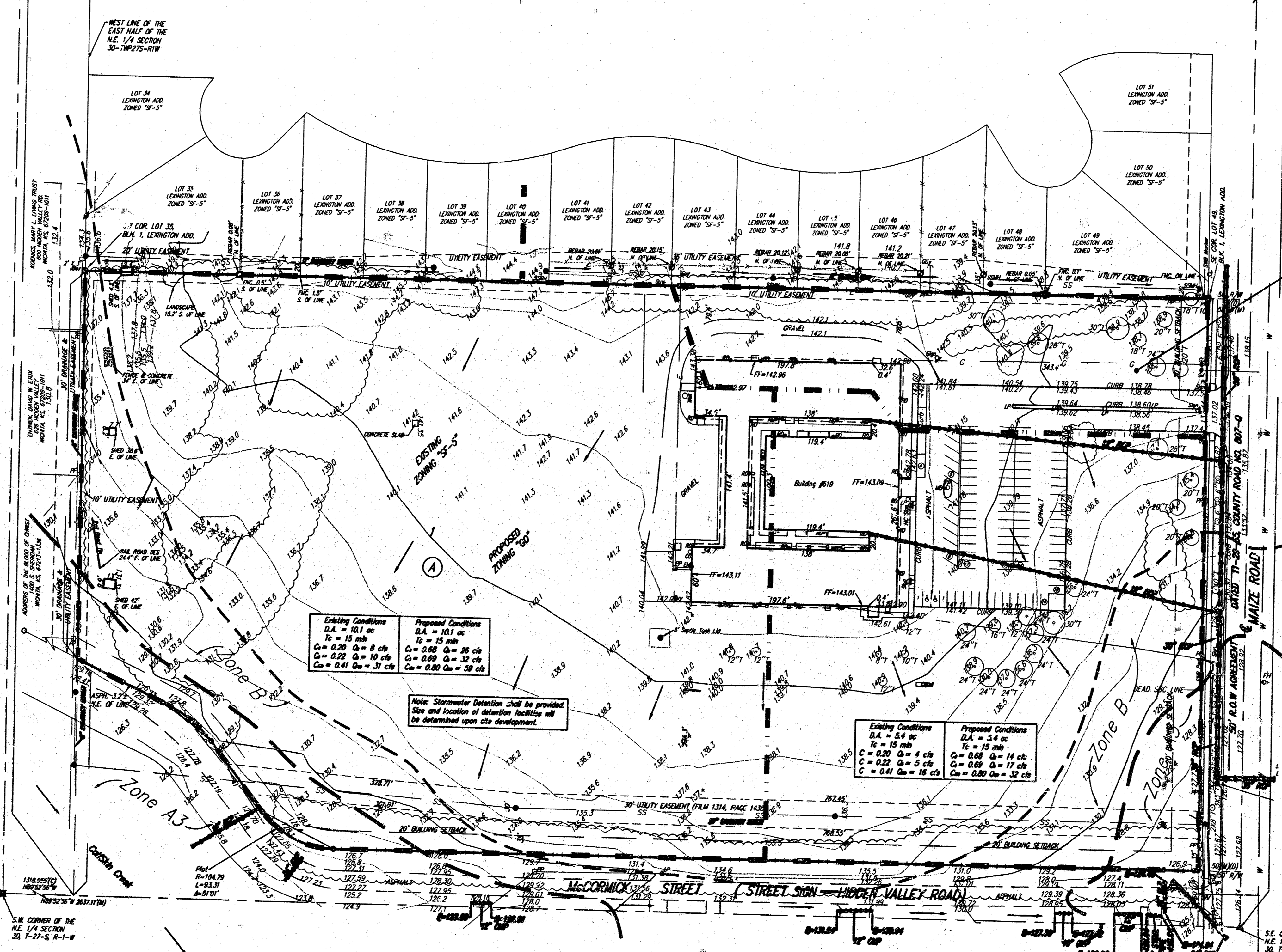


DRAINAGE PLAN LILLIE ADDITION WICHITA, SEDGWICK COUNTY, KANSAS

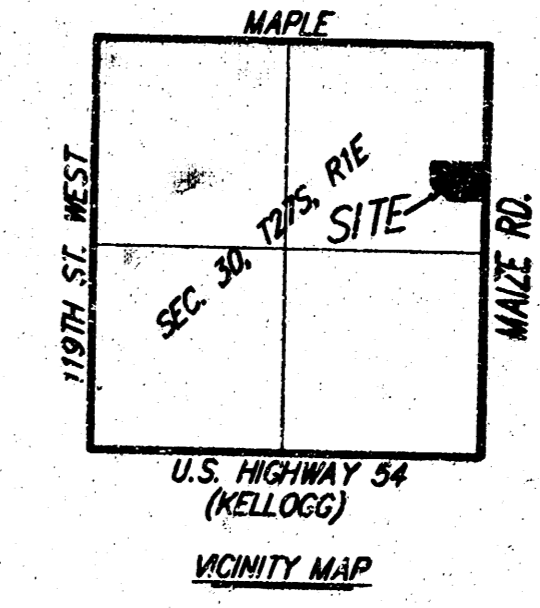


Existing Conditions	Proposed Conditions
$T_c = 1.8 \text{ hr}$	$T_c = 1.8 \text{ hr}$
$C = 0.20 \quad Q_u = 4 \text{ cfs}$	$C = 0.60 \quad Q_u = 4.7 \text{ cfs}$
$C = 0.22 \quad Q_u = 4.8 \text{ cfs}$	$C = 0.60 \quad Q_u = 5.7 \text{ cfs}$
$C = 0.41 \quad Q_u = 5.4 \text{ cfs}$	$C = 0.80 \quad Q_u = 11 \text{ cfs}$

Existing Conditions	Proposed Conditions
$T_c = 1.8 \text{ hr}$	$T_c = 1.8 \text{ hr}$
$C = 0.20 \quad Q_u = 8 \text{ cfs}$	$C = 0.60 \quad Q_u = 26 \text{ cfs}$
$C = 0.22 \quad Q_u = 10 \text{ cfs}$	$C = 0.60 \quad Q_u = 32 \text{ cfs}$
$C = 0.41 \quad Q_u = 37 \text{ cfs}$	$C = 0.80 \quad Q_u = 58 \text{ cfs}$

Existing Conditions	Proposed Conditions
$T_c = 1.8 \text{ hr}$	$T_c = 1.8 \text{ hr}$
$C = 0.20 \quad Q_u = 4 \text{ cfs}$	$C = 0.60 \quad Q_u = 14 \text{ cfs}$
$C = 0.22 \quad Q_u = 5 \text{ cfs}$	$C = 0.60 \quad Q_u = 17 \text{ cfs}$
$C = 0.41 \quad Q_u = 16 \text{ cfs}$	$C = 0.80 \quad Q_u = 32 \text{ cfs}$

Note: Stormwater Detention shall be provided. Size and location of detention facilities will be determined upon site development.



OWNER/DEVELOPER:
Catholic Diocese of Wichita
c/o Thomas J. Omersted
424 N. Broadway
Wichita, Kansas

BENCHMARK:
Maize Road and McCormick (Hidden Valley)
City of Wichita Bench Mark 0.5 miles (0.81 km)
South of Maple on the NE corner RCB over Cowan.
South of Hidden Valley.
Elevation=131.53 City Datum
1376.93 N.G.V.29

Note: Minimum Foot Elevation for all structures shall be 136.4 and (131.9 City Datum)

MAY 15, 2003

BAUGHMAN COMPANY P. A.
ENGINEERING, SURVEYING, & PLANNING
316-282-7271 • 315 ELLIS • WICHITA, KANSAS 67211
P:\PLATTOP\REPLY 2003\051503.dwg