

LOEHR ADDITION  
(Drainage)

NORTHWEST HIGH SCHOOL  
ADDITION

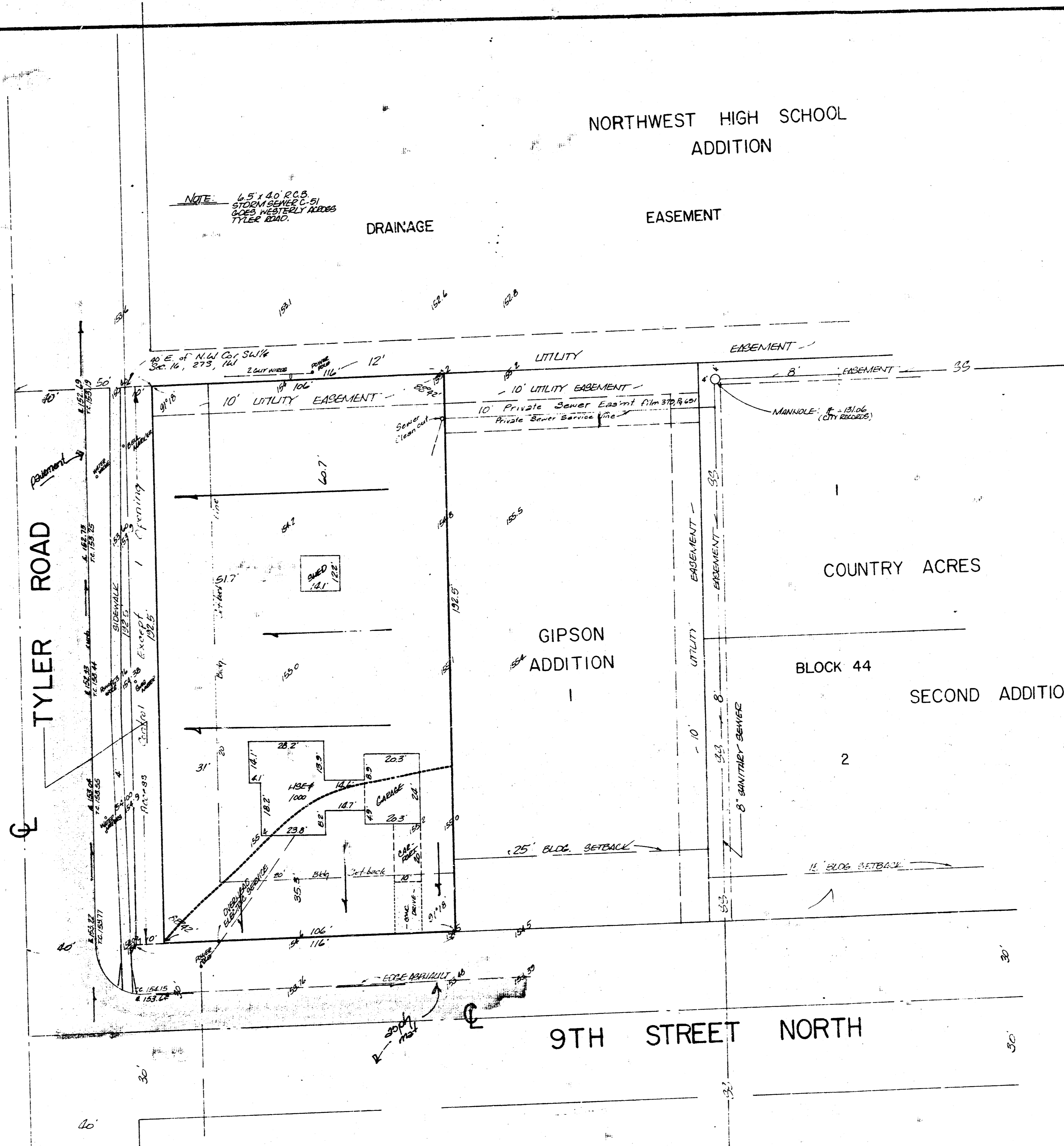
NOTE: 4.5' x 4.0' OCC'S  
GIPSON SEWER C-51  
SLOPS WESTERLY TOWARDS  
TYLER ROAD.

DRAINAGE

EASEMENT



SCALE: 1" = 20'  
BENCH MARK: DP WICHITA DISC, NORTHWEST  
CORNER OF HEADQUARTERS BLDG., 401 N. 10TH  
AND 40 EAST 10TH STREETS, WICHITA,  
KANSAS. ELEVATION = 150.25, CITY DATUM.



SKETCH PLAT  
**LOEHR ADDITION**

A TRACT IN THE SW1/4 SECTION 18, TWP. 27, R.1W.

OWNER: JIM LOEHR

**DRAINAGE PLAN**

GENERAL NOTES  
The lot when redeveloped will be graded to drain  
west to Tyler Road which drains north a short distance  
to a series of inlets and storm sewers.

BAUGHMAN COMPANY, P.A.  
SURVEYING & ENGINEERING  
314-262-7271 • 330 LAURA • WICHITA, KANSAS 67211

C. November 2005