

# LORD OF LIFE LUTHERAN CHURCH

SEDGWICK COUNTY, KANSAS.

*Drainage Concept*

**LEGAL DESCRIPTION**

Beginning at the North Quarter Corner of Section Eighteen (18), Township Twenty-seven (27) South, Range One (1) West of the 6th P.M., Sedgwick County, Kansas, thence Easterly along the North line of said Section at an assumed bearing of North 90 Degrees 00'00" East, 300.00 Feet, thence Southerly parallel to the West line of the North East Quarter (NE/4) of said Section bearing South 5 Degrees 32'45" East, 477.84 feet, thence North 90 Degrees 00'00" West, 300.00 Feet to the West line of the North East Quarter (NE/4) of said Section, also being the East line of Briarwood Estates, an Addition to Wichita, Sedgwick County, Kansas, thence Northerly along said West Quarter Section line bearing North 5 Degrees 32'45" West, 477.84 feet to the point of beginning.

**SURVEYOR'S CERTIFICATE**

I, Doug Rathbone, a Registered Land Surveyor in the State of Kansas, do hereby certify that the described tract of land was surveyed on January 19, 1994, and the accompanying final plat was prepared and that all the monuments shown hereon actually exist and their positions are correctly shown to the best of my knowledge and belief.

Doug Rathbone L.S. 1117

**DEDICATION**

STATE OF KANSAS )  
 ) SS  
COUNTY OF SEDGWICK )

Know all men by these presents, that we, the undersigned property owners of the land as above set forth in the Surveyor's Certificate, have caused the same to be surveyed and platted into one lot. Streets, not previously dedicated, shall be dedicated to and for the use of the public for the construction, operation, repair, and maintenance of all public utilities.

Mission Investment Fund of the Evangelical Lutheran Church of America, a Minnesota not for profit corporation

Harvey Olson Vice President  
Mission Investment Fund

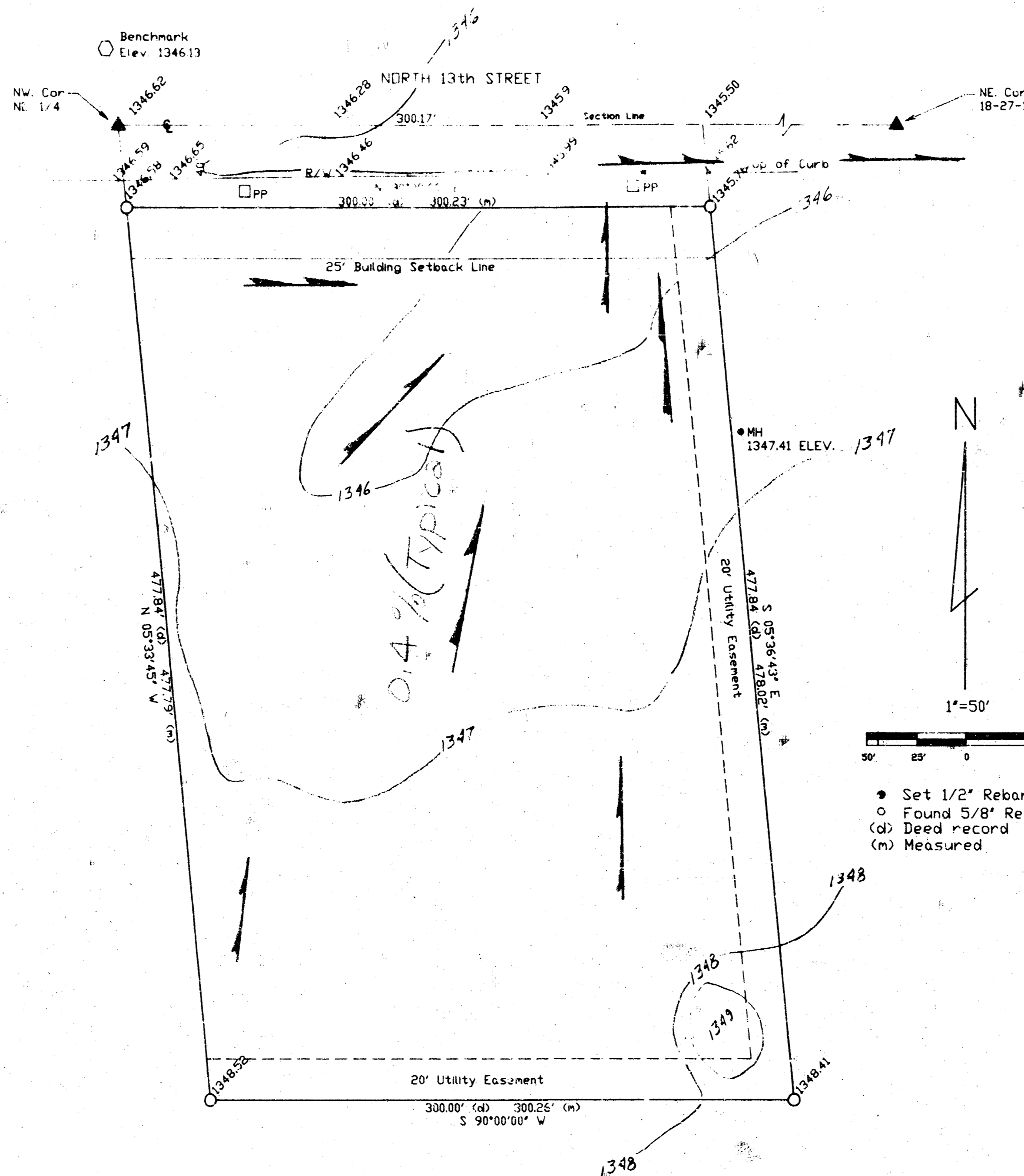
**NOTARY CERTIFICATE**

STATE OF ILLINOIS )  
 ) SS  
COUNTY OF COOK )

This instrument was acknowledged before me on \_\_\_\_\_ by Harvey Olson as Vice President of Mission Investment Fund on behalf of Mission Investment Fund of the Evangelical Lutheran Church of America, a Minnesota not for profit corporation.

(SEAL)

Notary Public  
My commission expires \_\_\_\_\_



**STREETS**

Streets, Avenues, and Drives shown on this plat and not heretofore dedicated to and for public use are hereby so dedicated.

**BUILDING LINES**

Building lines or setback lines are hereby established as shown on the accompanying plat and no building or portion thereof shall be built or constructed between this line and the street line.

**COUNTY COMMISSIONERS CERTIFICATE**

This plat approved and all dedications shown hereon, if any accepted by the Board of County Commissioners of Sedgwick County, Kansas, this \_\_\_\_\_ day of \_\_\_\_\_, 19\_\_\_\_.

ATTEST:

Betsy Gwin \_\_\_\_\_ Chair  
Susan E. Crockett-Spoon \_\_\_\_\_ Pro-tem Chairman  
County Clerk: Andrew L. Blas \_\_\_\_\_  
Thomas G. Winters \_\_\_\_\_ Commissioner  
Paul W. Hancock \_\_\_\_\_ Commissioner  
Mark F. Schroeder \_\_\_\_\_ Commissioner

(Seal)

**PLANNING COMMISSION CERTIFICATE**

This plat of Lord of Life Lutheran Church has been submitted and approved by the Wichita-Sedgwick County Metropolitan Area Planning Commission, Wichita, Kansas.  
Dated this \_\_\_\_\_ day of \_\_\_\_\_, 19\_\_\_\_.

Wichita-Sedgwick County Metropolitan Area  
Planning Commission

By \_\_\_\_\_ Chairman  
James D. Miner  
Marvin S. Krout \_\_\_\_\_ Secretary

(SEAL)

**CITY GOVERNING BODY CERTIFICATION**

This plat approved and all dedications shown hereon, if any, accepted by the City Council of the City of Wichita, Kansas, this \_\_\_\_\_ day of \_\_\_\_\_, 1994.

Elna Broadfoot \_\_\_\_\_ Mayor  
Pat Burnett \_\_\_\_\_ City Clerk

**TRANSFER RECORD**

Entered on transfer record this \_\_\_\_\_ day of \_\_\_\_\_, 1994.

\_\_\_\_\_  
County Clerk  
Susan E. Crockett-Spoon

**REGISTER OF DEEDS CERTIFICATE**

STATE OF KANSAS )  
 ) SS  
COUNTY OF SEDGWICK )

This is to certify that this instrument was filed for record in the Register of Deeds Office, at \_\_\_\_\_ a.m.-p.m. on the \_\_\_\_\_ day of \_\_\_\_\_, 1994.

Pat Kettler \_\_\_\_\_ Register of Deeds  
Ed Resa \_\_\_\_\_ Deputy

**MACON COMPANY**  
**RATHBONE SURVEYING**  
114 E. FOURTH  
NEWTON, KANSAS 67114  
316-283-7000

PROJECT NO. -90742 1/5/94