

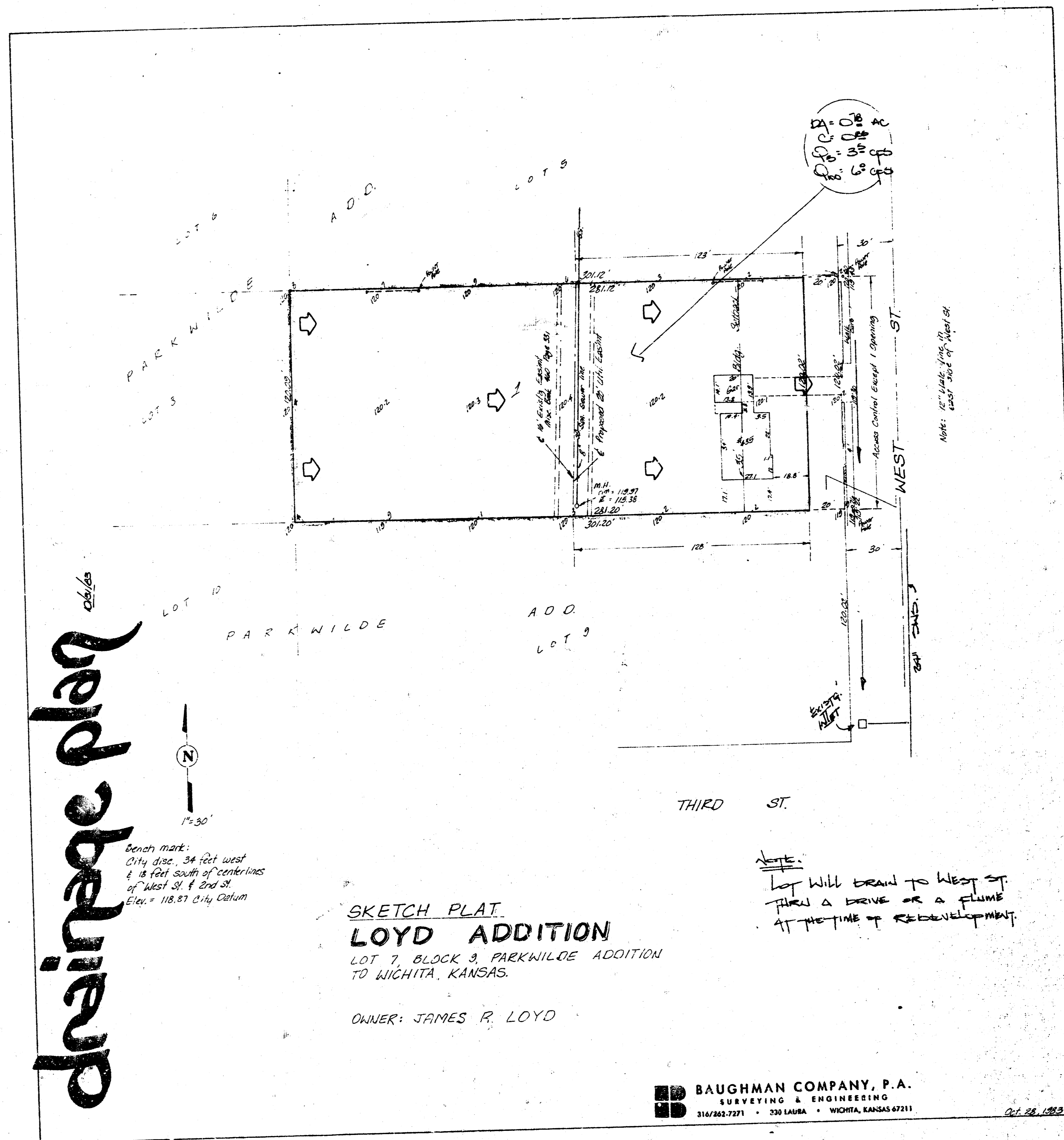
BAUGHMAN COMPANY, P.A.
 SURVEYING & ENGINEERING
 316/262-7271 • 330 LAURA • WICHITA, KANSAS 67211

CONFIRMATION MEMO

PROJECT: <u>LOYD ADDITION</u>	DATE: <u>10-11-83</u>
JOB NO. _____	COPIES TO: _____
TO: <u>Chris Breitenstein</u>	
FROM: <u>R. Wooten</u>	
REFERENCE: <u>Drainage plan.</u>	

Final plat is scheduled for subdivision for Nov. 10, 1983.
 The lot will drain east to West St. thru drives or flumes.
 The lot will be developed for LC development. Runoff factor
 will be 0.85. West st. drains south to an existing inlet
 located at 3rd Street and a SMS in West St.

drainage plan



BAUGHMAN COMPANY, P.A.
 SURVEYING & ENGINEERING
 316/262-7271 • 330 LAURA • WICHITA, KANSAS 67211

OCT 24 1983