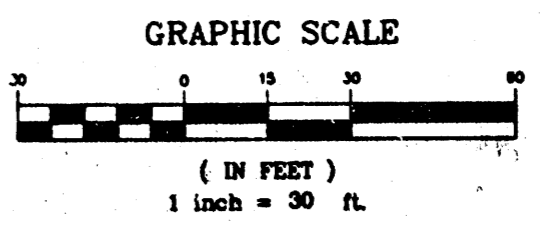
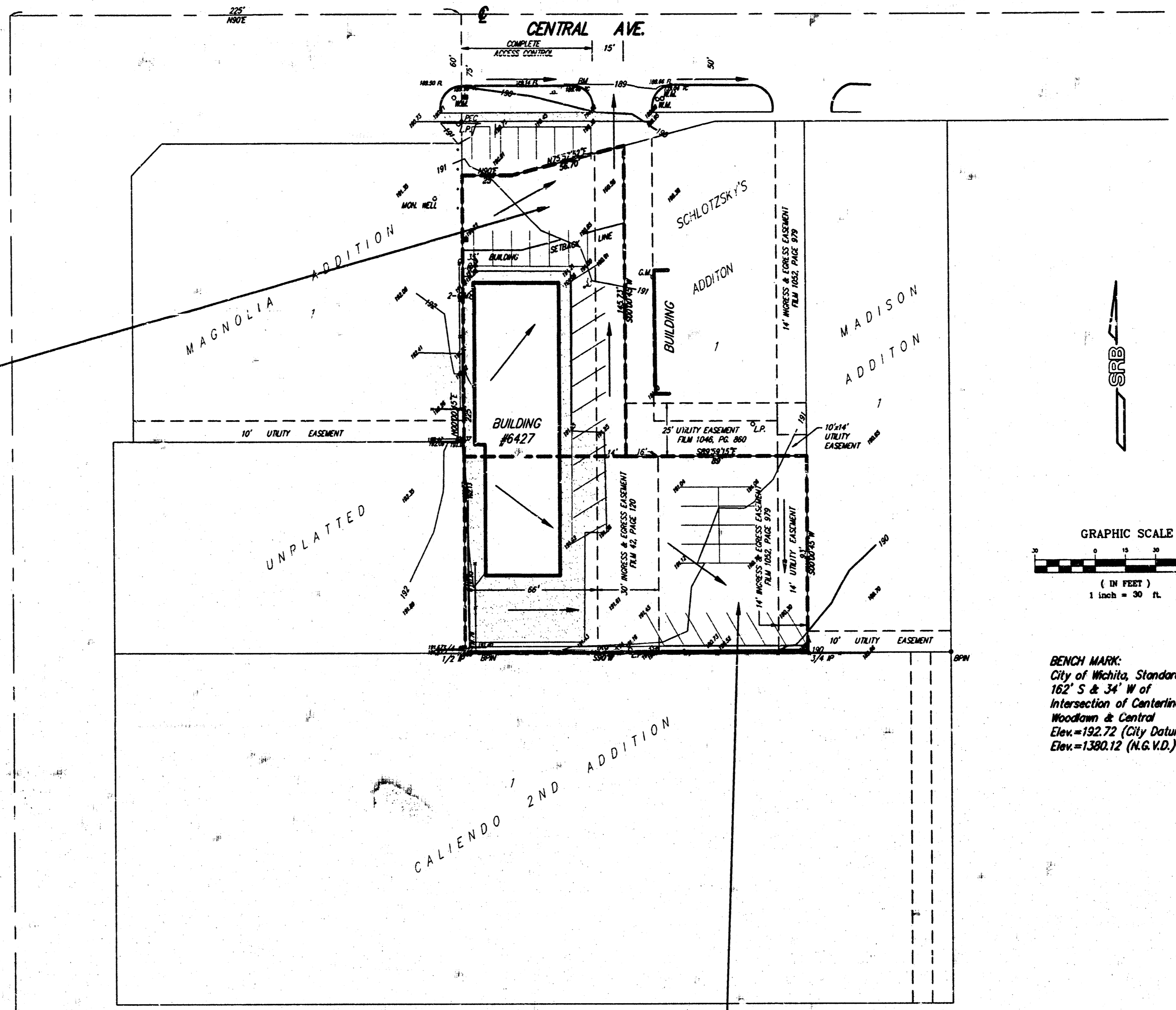
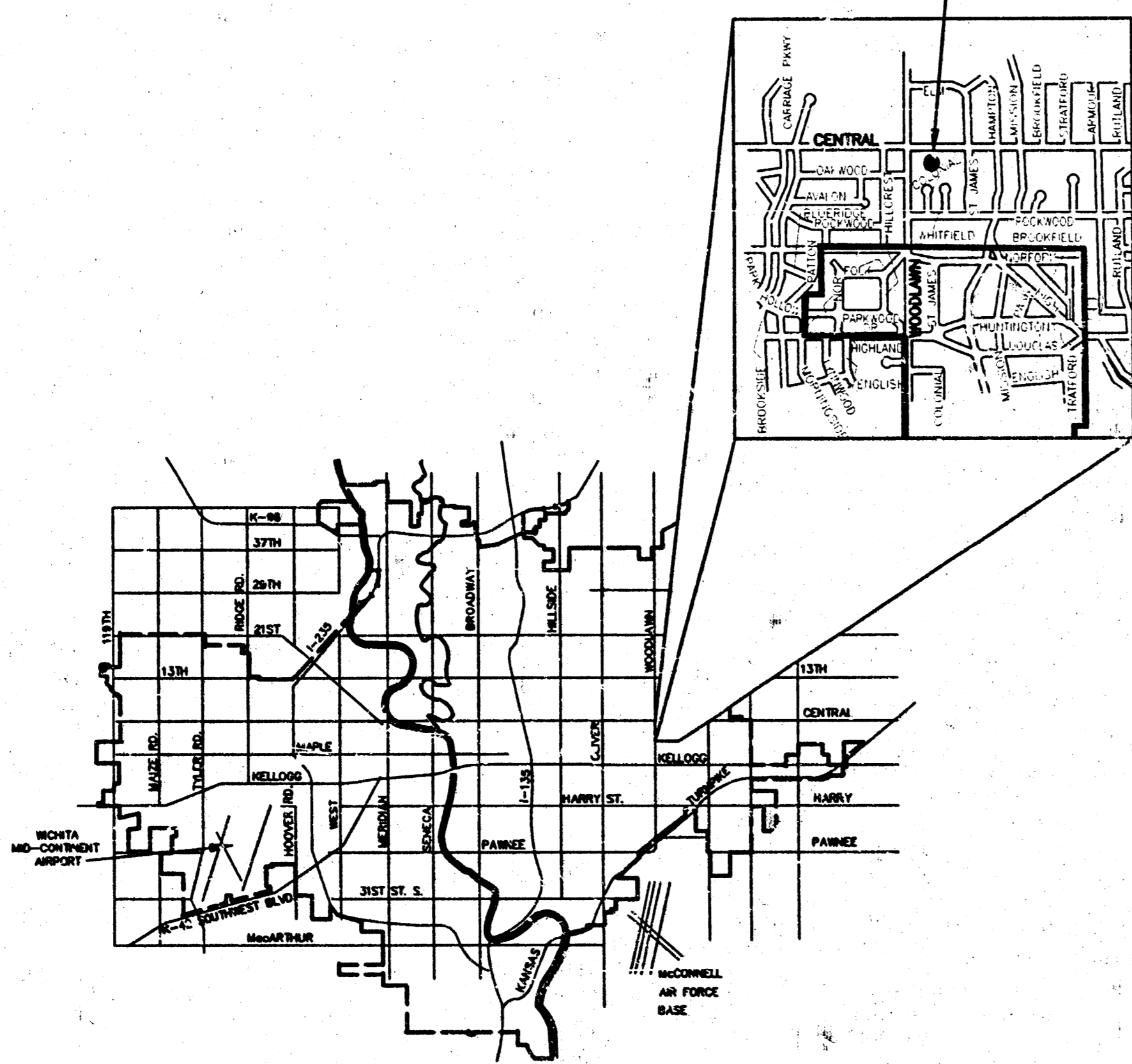


Drainage Area = 0.25 Ac.
 Hydrologic Soil Type "D"
 $T_c = 15$ min.
 $C_p = 0.87$
 $C_m = 0.89$
 $I_p = 4.56$ in.
 $I_m = 7.37$ in.
 $Q_p = 1.0$ cfs
 $Q_m = 1.6$ cfs

SITE



BENCH MARK:
 City of Wichita, Standard Disc
 162' S & 34' W of
 Intersection of Centerlines of
 Woodrow & Central
 Elev. = 192.72 (City Datum)
 Elev. = 1380.12 (N.G.V.D.)

Drainage Area = 0.35 Ac.
 Hydrologic Soil Type "D"
 $T_c = 15$ min.
 $C_p = 0.87$
 $C_m = 0.89$
 $I_p = 4.56$ in.
 $I_m = 7.37$ in.
 $Q_p = 1.4$ cfs
 $Q_m = 2.4$ cfs

**MADISON 2ND ADDITION
 DRAINAGE PLAN
 WICHITA, KANSAS**

SRB 524 NORTH MAIN WICHITA, KANSAS 67203 316-266-8008
 316-266-4521
 http://www.srb.com

SAVOY, RUGGLES & BOHM, P. A.
 ENGINEERING & SURVEYING

PROJECT NUMBER: 1019P

DESIGN	DRAWN	CHECKED	DATE	REVISION
JDS	JDS	JDS	June 23, 1998	

SHEET 1 OF 1