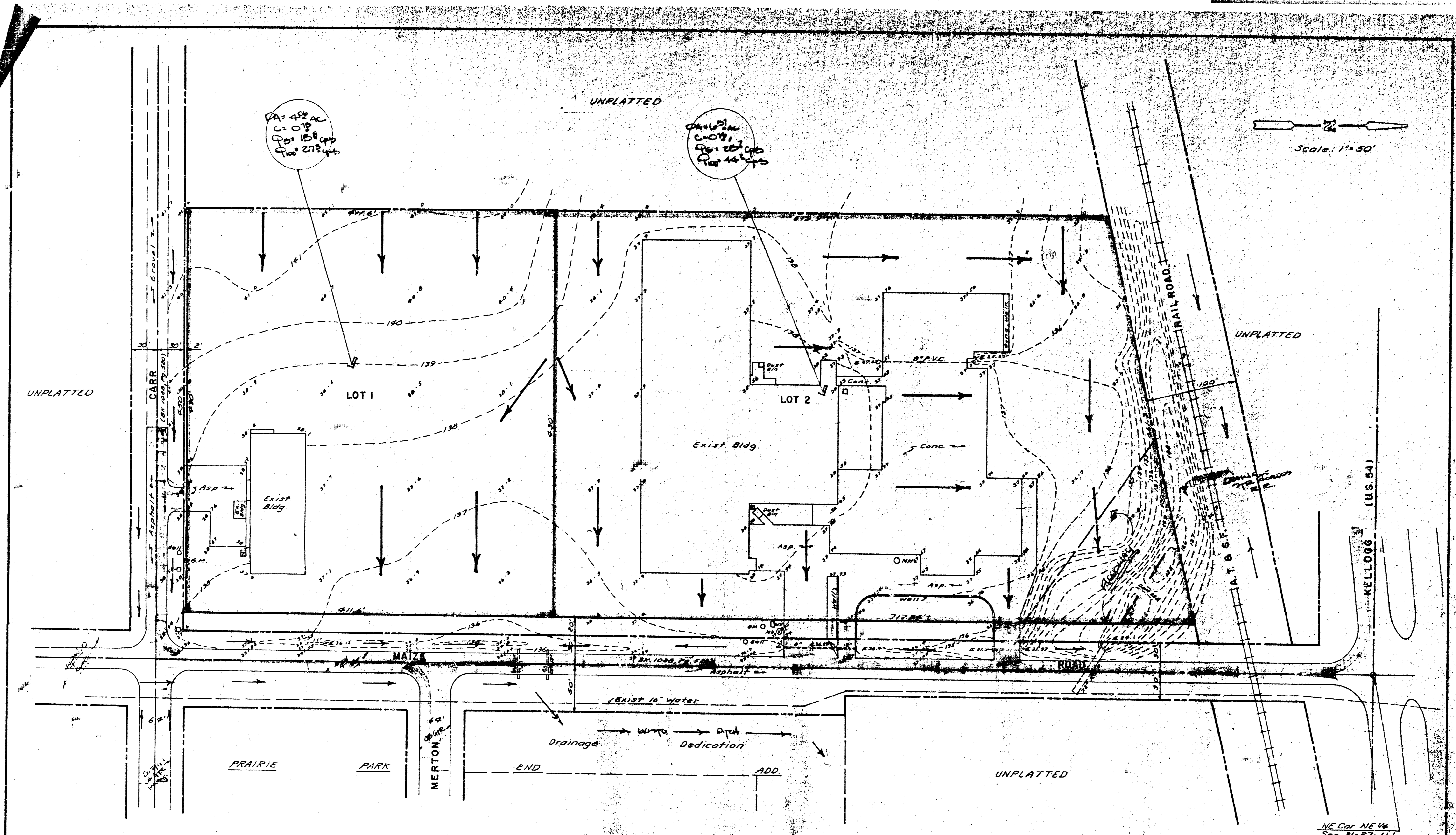


MAIZE AVENUE ADDITION
(Drainage)



GENERAL NOTES

Lots 1 and 2 in this plat will be industrial usages with a runoff factor of 0.75 used for the development for calculating storm water runoff amounts.

Lot 1 (4.06 Ac.) will drain east to Maize Rd. which consists of a asphalt and roadway with ditches. The ditch drains north to existing pipes which cross Maize Rd. as indicated. Lot 2 (4.06 Ac.) also drains east to Maize Rd. ditches and separates into two drainageways.

A large drainage area discharges across the very north east portion of Lot 2 and into an existing 72" RCP crossing Maize Rd. The lot also receives discharge at the northeast corner from the railroad ditches and RR areas. An appropriate floodway dedication across the northeast corner of Lot 2 to accommodate the drainageway is indicated on the plan.

Drainage discharge from the lots to Maize Rd. will be thru drives or flumes as necessary at the time of any further development and also shall provide adequate erosion protection for the ditches at discharge points where necessary.

B.M. City d.c. center of median
40' E. Maize & U.S. 54
Elev. 136.97

PRELIMINARY PLAT
MAIZE AVENUE ADDITION
PART OF THE NE 1/4 OF SEC 31-27-1W
DRAINAGE PLAN

Aug. 1, 1905
LAUGHMAN COMPANY, P.A.
SURVEYING & ENGINEERING
CANTON, OHIO