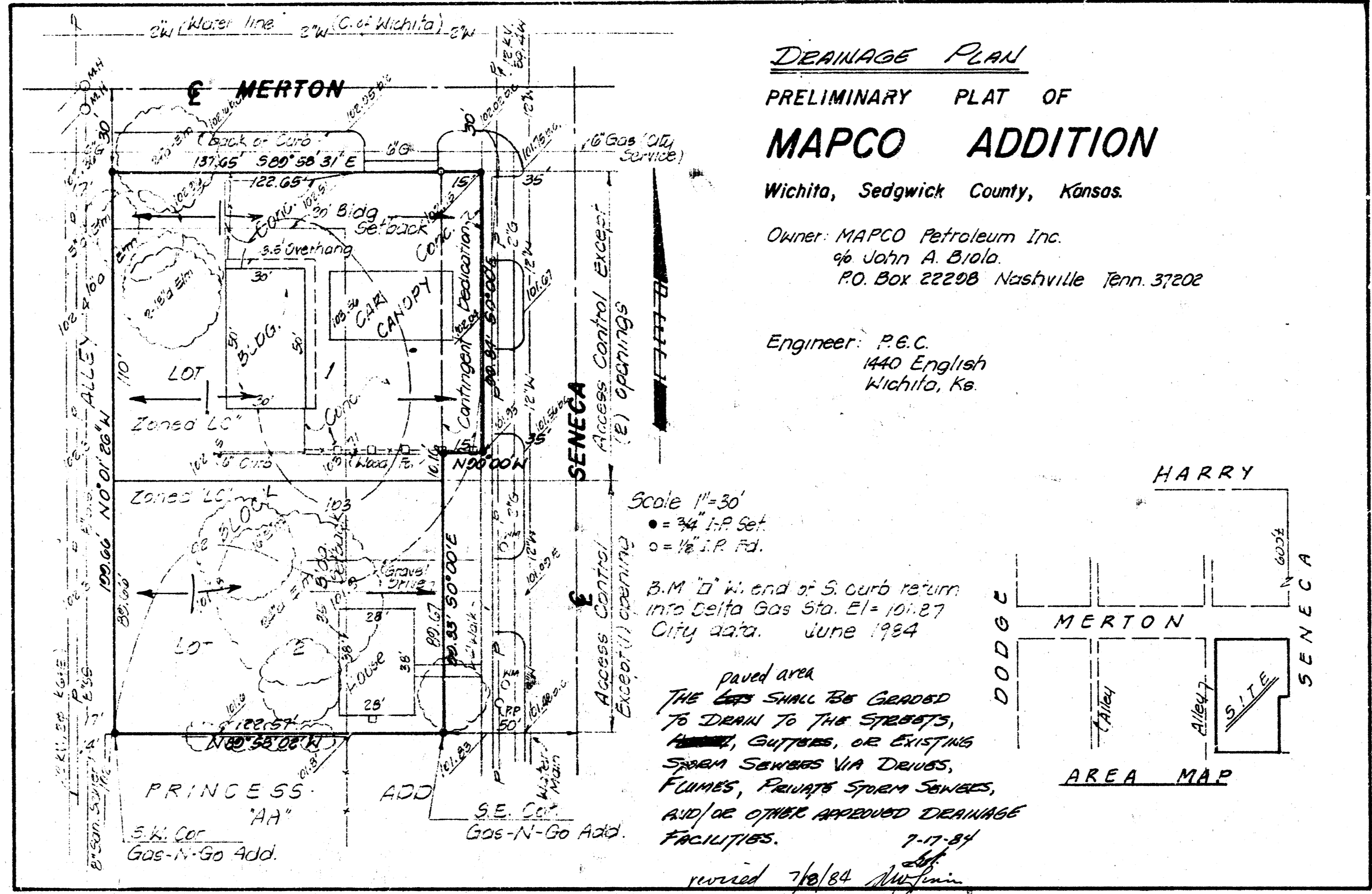


MAPCO ADDITION
(Drainage)



Drainage Plan
PRELIMINARY PLAT OF
MAPCO ADDITION

Wichita, Sedgwick County, Kansas.
Owner: MAPCO Petroleum Inc.
96 John A. Bialo
P.O. Box 22200 Nashville Tenn. 37202

Engineer: P.E.C.
1440 English
Wichita, Ke.

Scale 1"=30'
● = 34" I.P. Set
○ = 16" I.P. Rd.

B.M. 17' W. and of S. curb return
into Ceifa Gas Sta. El. = 101.87
City data. June 1984

Dredged area
The area shall be dredged
to drain to the streets,
curbs, gutters, or existing
storm sewers via drains,
flumes, flumes storm sewers,
and/or other approved drainage
facilities.
7-17-84
revised 7/18/84

