

LOT GRADING PLAN

# MAPLE DUNES ADDITION

WICHITA, SEDGWICK COUNTY, KANSAS

SW 1/4, SECTION 24, T27S, R17W

MAY 1, 1967

REVISED DECEMBER 13, 1967

REVISED JULY 12, 1968

REVISED JUNE 12, 2000 PARCELS 1-18, (BLOCK 4)

△△ Denotes revisions for that date.

ELEVATIONS SHOWN AROUND STREET R/W ARE STREET R/W ELEVATIONS, NOT TOP OF CURB ELEVATIONS. TOP OF CURB ELEVATIONS ARE 0.5 FEET LOWER THAN STREET R/W ELEVATIONS.

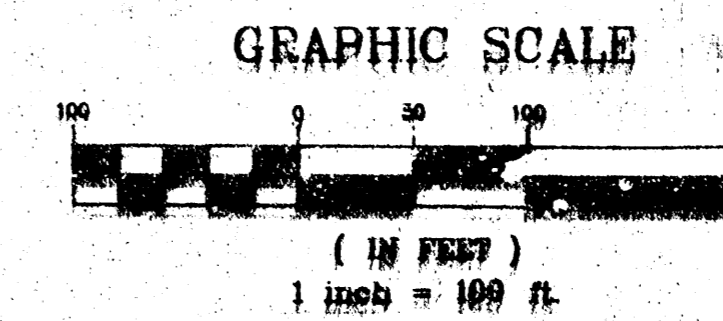
### LEGEND

- G = GARAGE FLOOR ELEVATION
- F = TOP OF FOUNDATION WALL ELEVATION
- R = REAR SIDE ELEVATION (WALK OUT) (NEAR WALL 0.5' ABOVE SOIL & 1.5' ABOVE BASEMENT FLOOR)
- B = BASEMENT FLOOR ELEVATION (WALK OUT)
- ① = 50 WET TIF
- ② = WET OUT
- ③ = WALKOUT

### BENCHMARKS

(City of Wichita Datum)

1. Bench Mark #1 City of Wichita std. disk on top of NE corner of 135th and Rolling Hill Drive, 34' North of Southwest corner of Section 24-T27S-R17W. Elevation 194.20
2. Bench Mark #2 City of Wichita std. disk at Southwest corner of 135th and Rolling Hill Drive, 1/4 mile South of Central, 47' East of CL 135th, 31' South of CL Rolling Hill Drive, 14' South of South curb line. Elevation 161.88
3. Bench Mark #3 City of Wichita std. disk on Southeast corner of East Subguard of RCR under Forstner's, 86' North of CL 135th. Elevation 135.54



### NOTE:

1. ONLY THOSE TREES WITHIN PROPOSED STREET RIGHT-OF-WAYS MAY BE REMOVED AT THE APPROVAL OF THE OWNER AND/OR THE ENGINEER
2. THIS GRADING PLAN IS SUBJECT TO CHANGE TO MATCH FINAL PAVING AND DRAINAGE PLANS.
3. FRONT LOT CORNER ELEVATIONS ARE 0.5 FEET ABOVE THE TOP OF CURB ELEVATION.
4. GARAGE FLOOR ELEVATIONS ARE SET 3' ABOVE HIGHEST FRONT LOT CORNER ELEVATION (TYPICAL).

**PGE & ASSOCIATES OF KANSAS, INC.**  
**CONSULTING ENGINEERS**  
 200 E. Cotton Blvd. Suite 2000, Wichita, KS 67202-1110

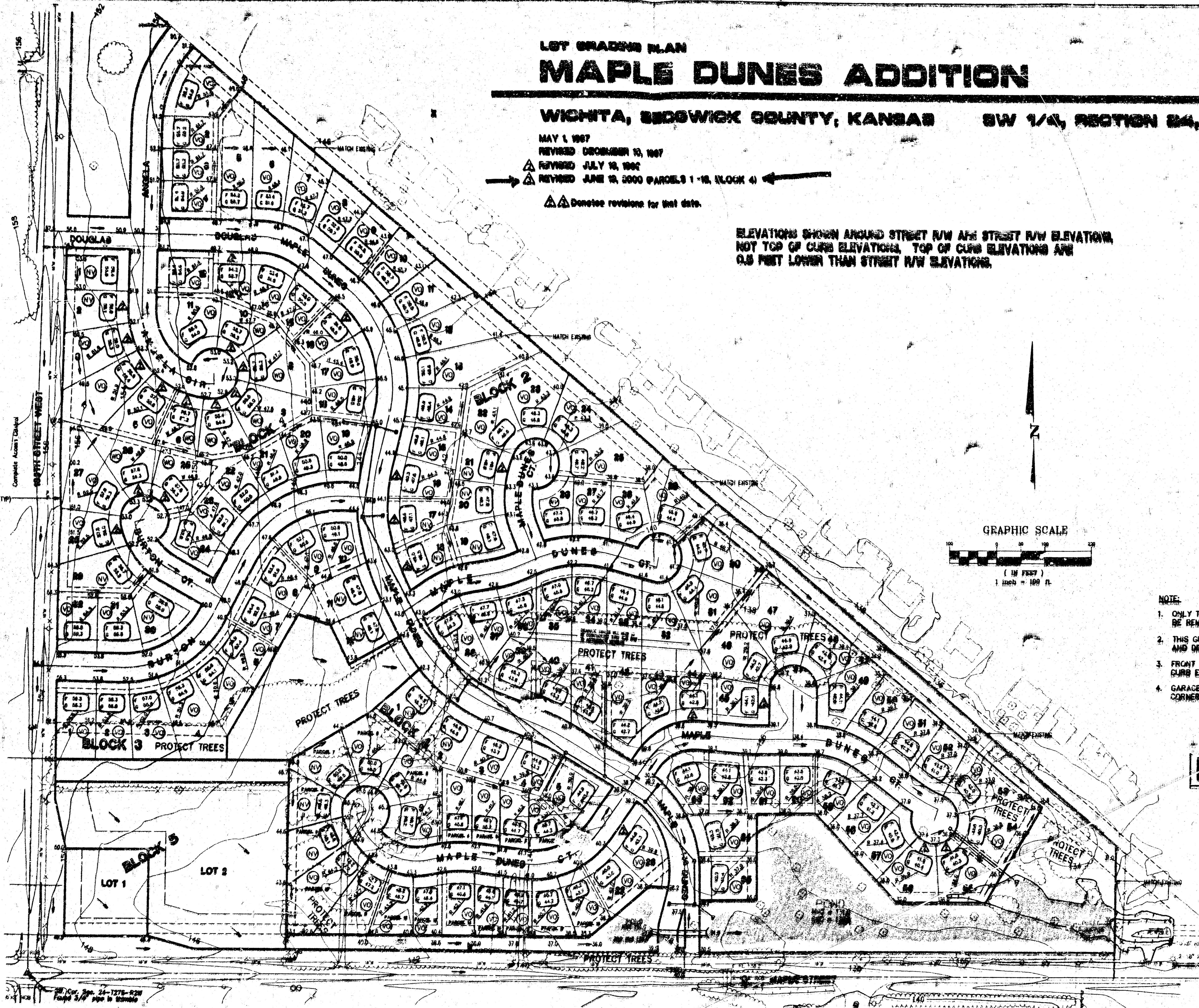
## MAPLE DUNES ADDN

→ REVISION TO LOTS IN BLOCK 4

*James M. Lee*  
 JUN 14 2000  
 14498  
 KANSAS  
 PROFESSIONAL ENGINEER

6-14-00

**APPROVED**  
**DRAINAGE PLAN**



S:\MAPS\MAPLE DUNES ADDN.dwg Tue Jun 20 09:03:13 2000 JAMES LEE, P.E. Page 6 ASSOCIATES