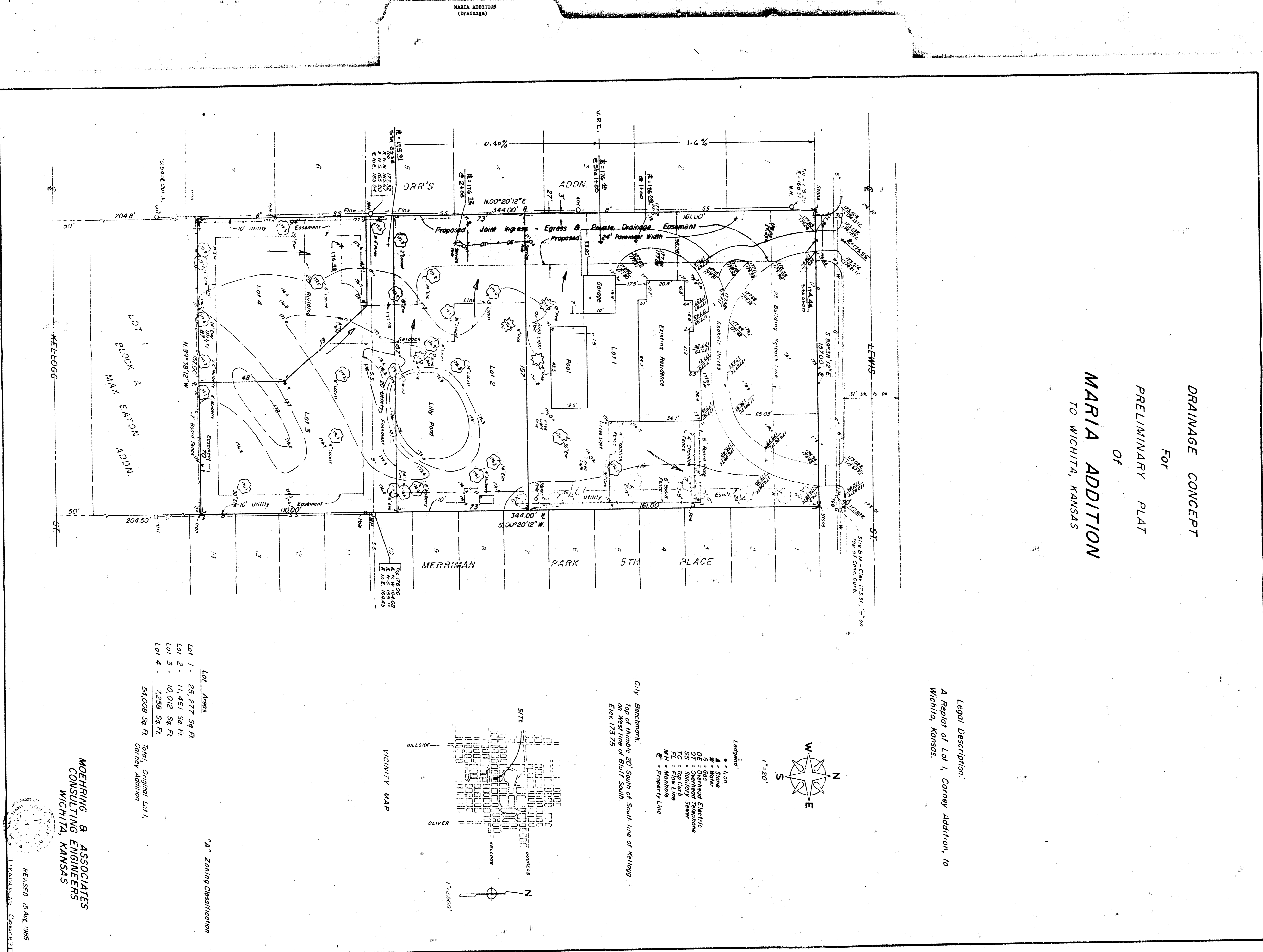
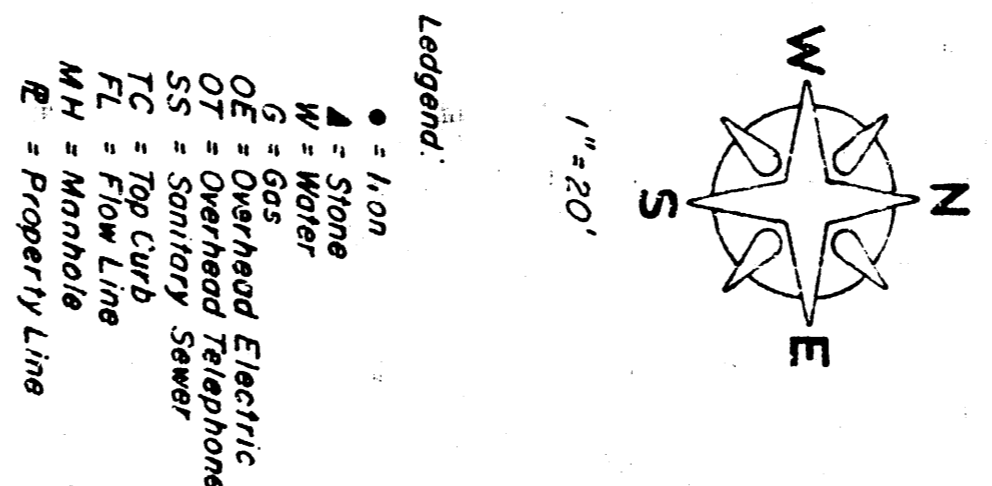


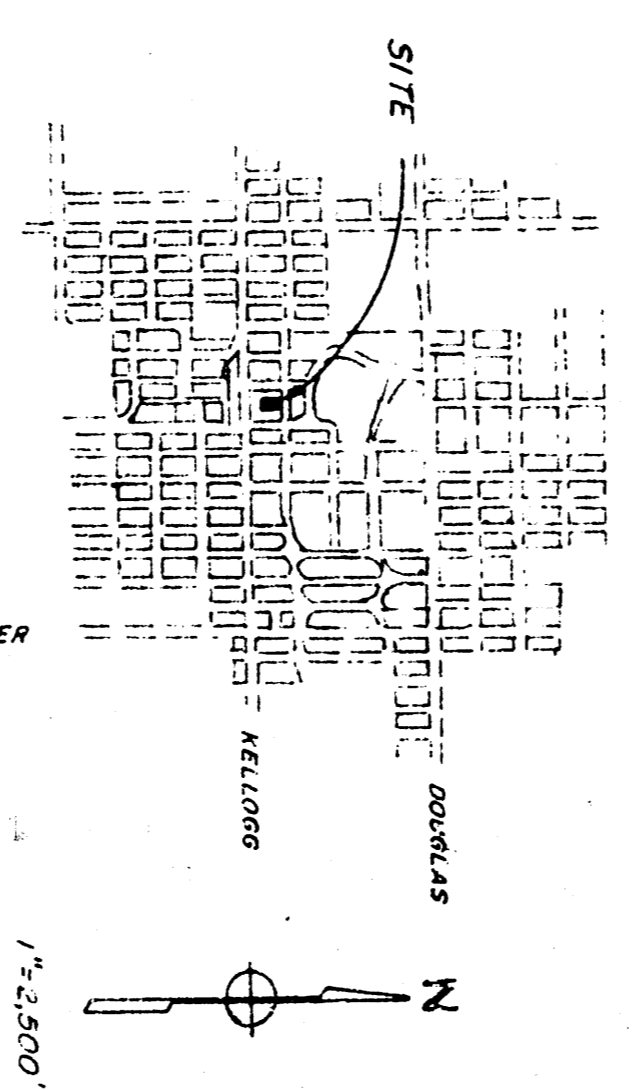
DRAINAGE CONCEPT
 FOR
 PRELIMINARY PLAT
 OF
MARIA ADDITION
 TO WICHITA, KANSAS



Legal Description:
 A Parcel of Lot 1, Carney Addition, to
 Wichita, Kansas.



City Benchmark:
 Top of Hinckle 20' South of South line of Kellogg
 on West line of Bluff South.
 Elev. 173.75



Lot Area	Area (Sq. Ft.)
Lot 1 -	29,277 Sq. Ft.
Lot 2 -	11,461 Sq. Ft.
Lot 3 -	10,012 Sq. Ft.
Lot 4 -	7,259 Sq. Ft.
Total, Original Lot 1,	54,008 Sq. Ft.
Carney Addition	

"A" Zoning Classification

MOHRING & ASSOCIATES
 CONSULTING ENGINEERS
 WICHITA, KANSAS

REVISED 15 Aug. 1985
 DRAINAGE CONCEPT