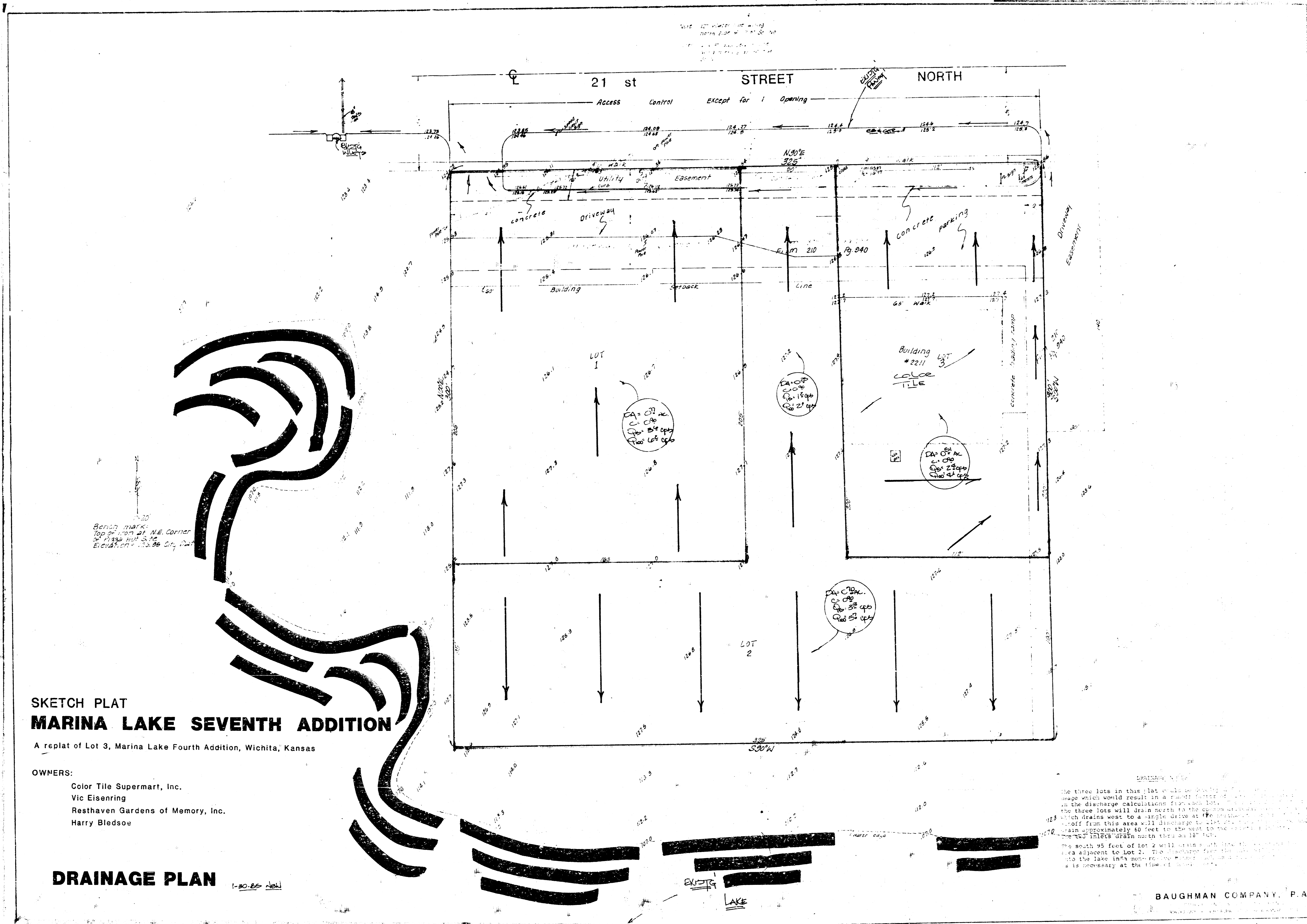


MARINA LAKE 7TH ADDITION
(Drainage)



SKETCH PLAT
MARINA LAKE SEVENTH ADDITION

A replat of Lot 3, Marina Lake Fourth Addition, Wichita, Kansas

OWNERS:
 Color Tile Supermart, Inc.
 Vic Eisenring
 Resthaven Gardens of Memory, Inc.
 Harry Bledsoe

DRAINAGE PLAN
 1-30-85 *Weld*

The three lots in this plat could be developed for residential use which would result in a paved lot for each lot. The discharge calculations for each lot are as follows: LOT 1 - 1500 sq ft, LOT 2 - 1500 sq ft, LOT 3 - 1500 sq ft. The three lots will drain north to the common driveway which drains west to a single drive at the intersection of the driveway from this area will discharge to the lake. The driveway will drain approximately 40 feet to the west to the common driveway. The 18" inlets drain north thru an 18" lot. The south 95 feet of lot 2 will drain south thru the driveway area adjacent to lot 2. The driveway from the driveway into the lake will have a 18" inlet. The driveway will have a 18" inlet at the time of construction.

BAUGHMAN COMPANY, P.A.