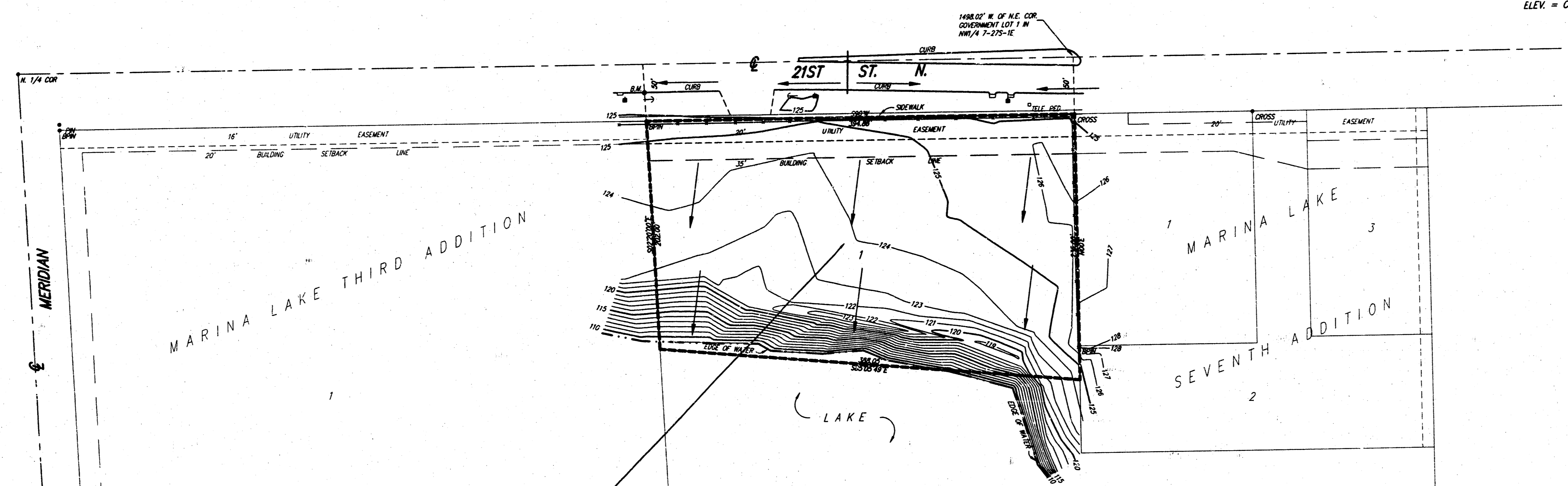


BENCH MARK: City of Wichita B.M.  
 N.E. Cor. Conc. Base for Cross Walk  
 28.2' S. of 21st St. & 174.3' E. of  
 Benjamin & 185.6' W. of Richmond  
 Elev.=124.85 (City Datum)

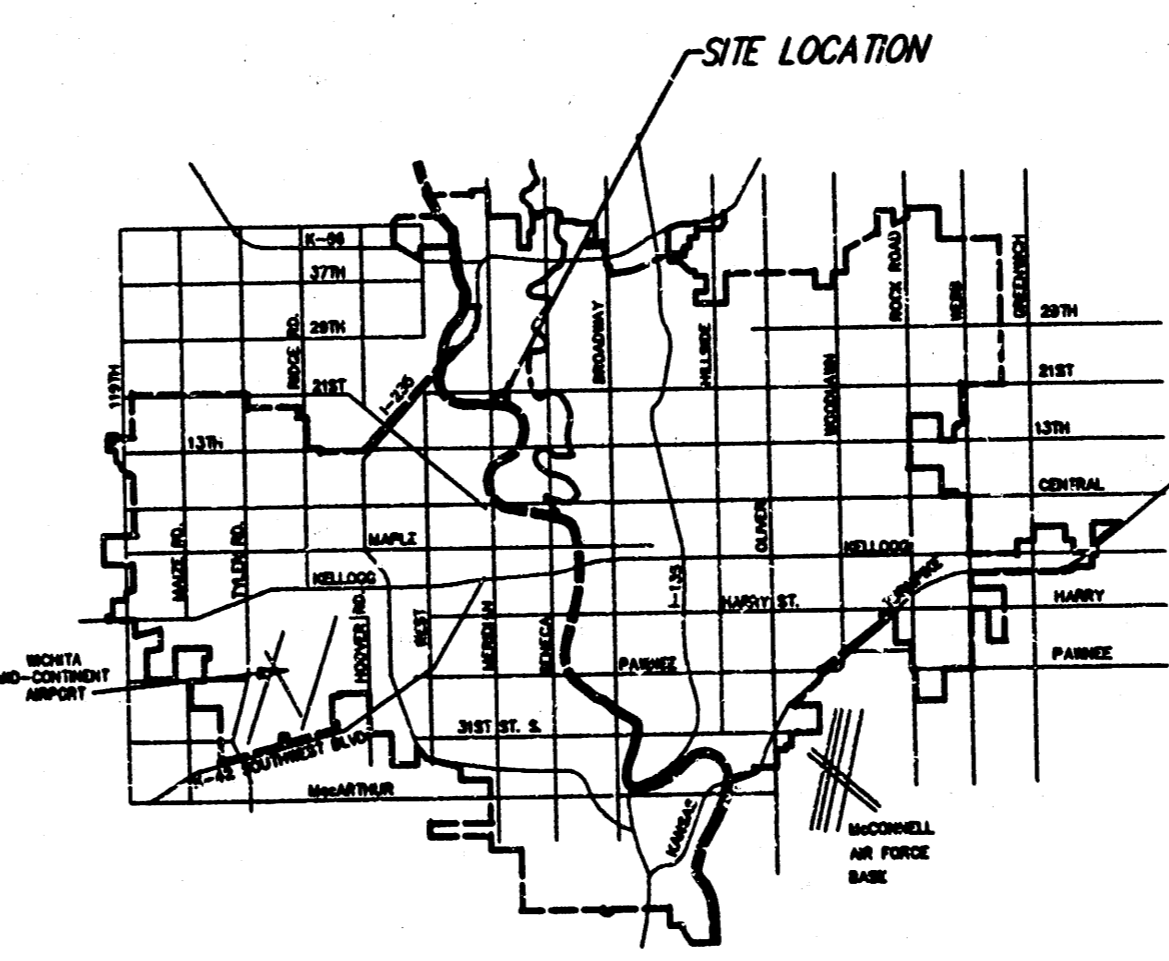
ON SITE B.M.: Chisled "C" on top  
 of curb @ N.E. Cor. Marina Lake  
 Third Addition.  
 Elev.=124.12 (City Datum)

SCALE: 1"=50'  
 ELEV. = CITY DATUM



Drainage Area = 1.96 Ac.  
 Hydrologic Soil Type "B"  
 $T_c = 15$  min.  
 $C_s = 0.69$   
 $C_{100} = 0.80$   
 $I_p = 4.56$  in.  
 $I_{100} = 7.37$  in.  
 $Q_p = 6.2$  cfs  
 $Q_{100} = 11.6$  cfs

UNPLATTED



**MARINA LAKES 8TH ADDITION  
 DRAINAGE PLAN  
 WICHITA, KANSAS**

**SRB** 324 NORTH MAIN WICHITA, KANSAS 67203  
 SAVOY, RUGGLES & BOX, P.A.  
 ENGINEERING & SURVEYING

DESIGN	DRAWN	UTILITY	REVIEW	DATE	REVISED
JDS	JDS			Aug. 3, 1998	

PROJECT NUMBER: 1  
 SHEET: 1