

E:\projects\040\04056\Drainage.dwg Mon Oct 18 14:54:03 2004 Steve Schmidt/AM Consulting Inc.

MAY FIELD FIRST ADDITION WICHITA, SEDGWICK COUNTY, KANSAS DRAINAGE PLAN

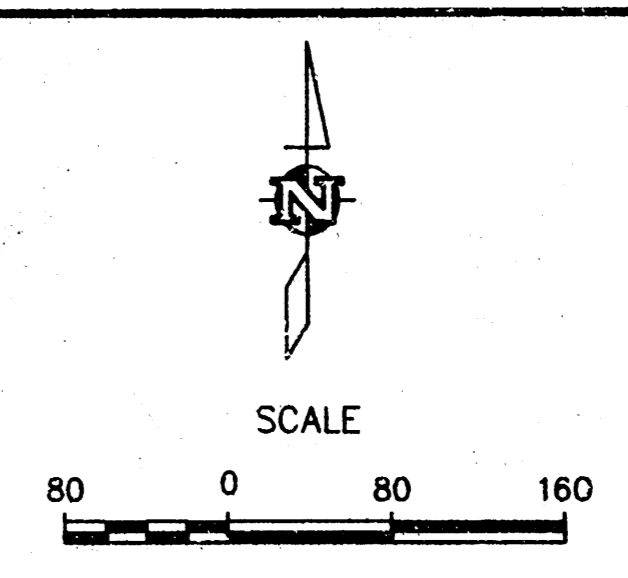
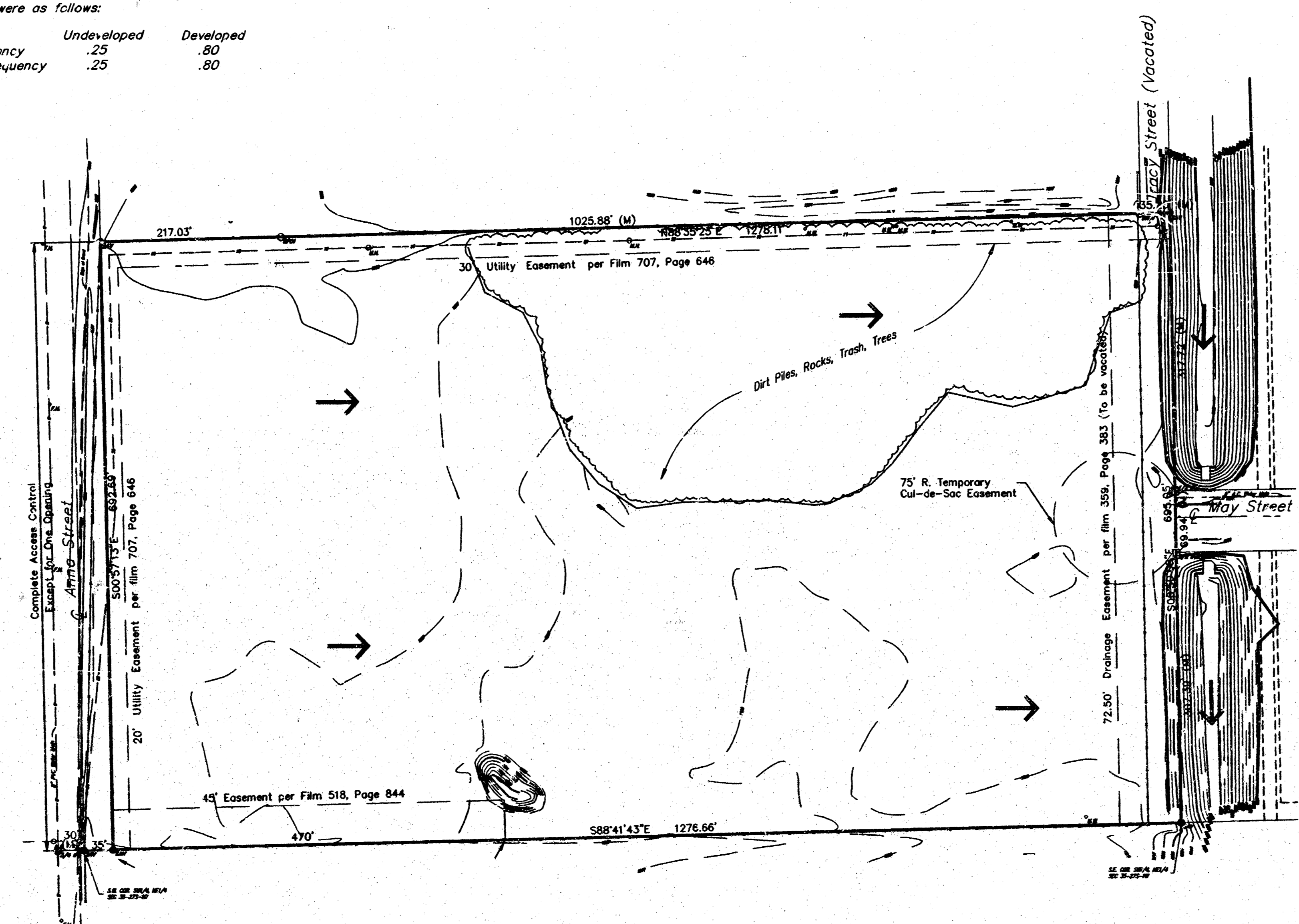
Area (Ac)	Undeveloped		Developed	
	C_p (cfs)	Q_{100} (cfs)	C_p (cfs)	Q_{100} (cfs)
20.3	9.4	37.4	96.2	120.2

Storage Volume Required=112,000 ft³
Surface Area Required=0.25 Ac.

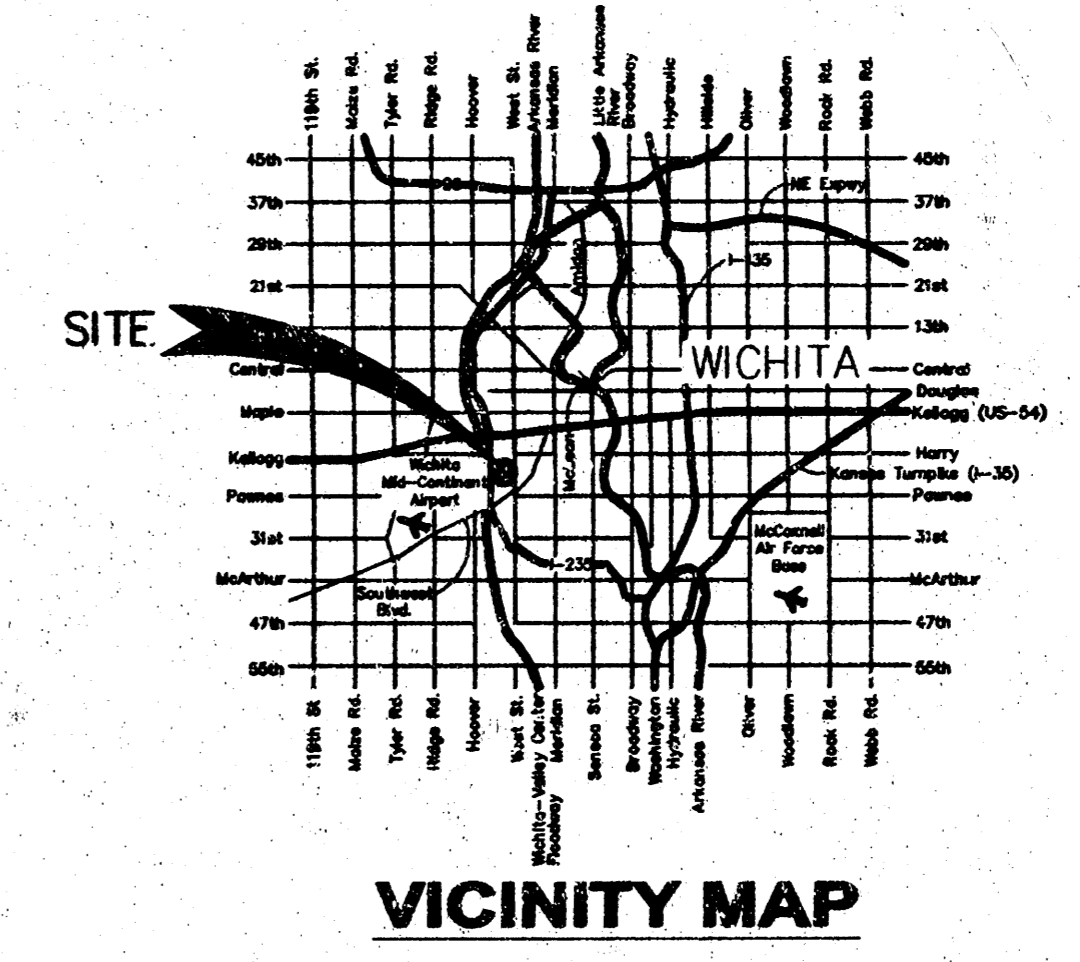
NOTES:


- Determination of Q's was made using the rational method.
- c's used were as follows:

	Undeveloped	Developed
5yr frequency	.25	.80
100 yr frequency	.25	.80




- LEGEND**
- (C) = Calculated
 - (M) = Measured
 - (P) = Plotted
 - (R) = Record
 - C.A.C. = Complete Access Control
 - R.O.W. = Right-of-Way
 - = BPN (found)
 - = 1/2" Iron Pipe (found)
 - = 3/4" Iron Pipe (found)
 - = 1/2" Rebar W/SAVDY CAP (set)
 - ▲ = Section Corner



SURVEYED BY:

Savoy Company, P.A.
 Land Surveys
 533 S. Republic, Suite 104, Wichita, KS 67202
 PH: (316) 265-4000
 FAX: (316) 265-4275
 www.savoy.com

BENCHMARK
 City of Wichita Std. Disc.
 West side of Anna and south line of drive into trailer park.
 125' S. of West 1/4 corner.
 Elevation = 1297.5 NGVD

FILENAME: 00056.dwg



CONSULTING
ENGINEERING SERVICES
 142 S. Maple, Wichita, KS 67202
 316/261-2870 fax: 316/261-2836