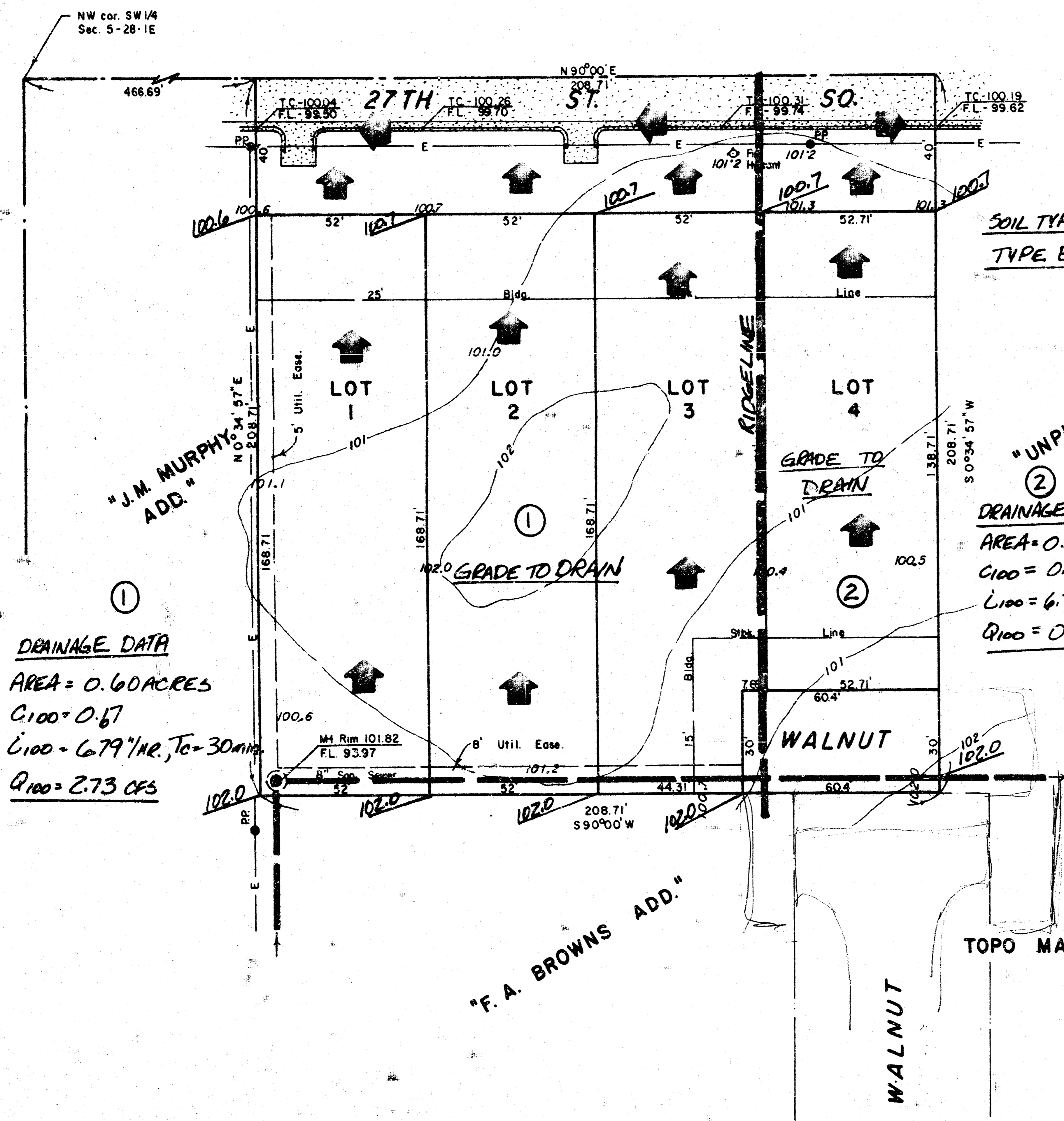
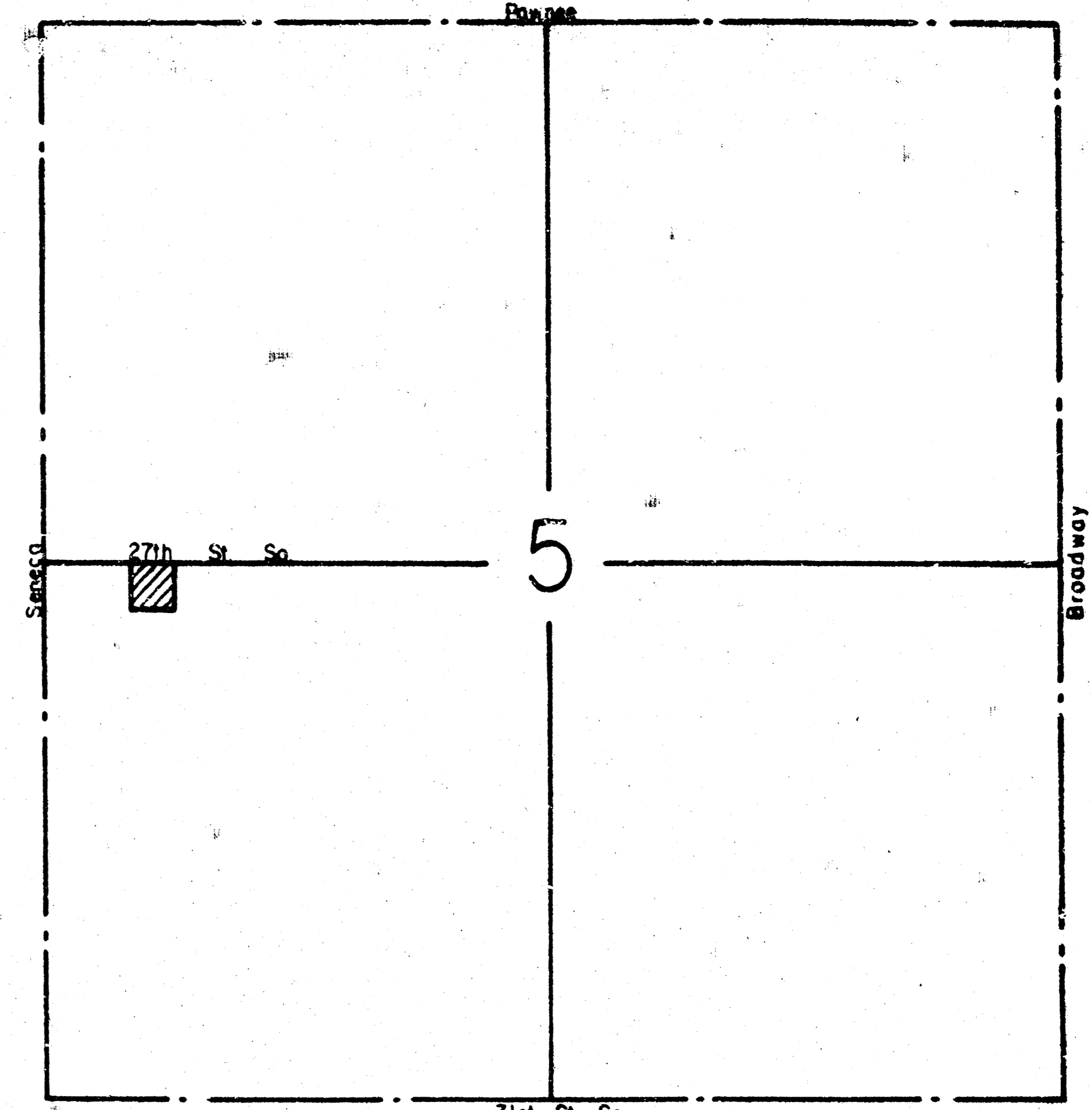


PRELIMINARY PLAT
R. H. McCOMB ADDITION
 WICHITA, SEDGWICK COUNTY, KANSAS



SOIL TYPES ARE SCS
 TYPE B SOILS

"UNPLATTED"
 ②
 DRAINAGE DATA
 AREA = 0.17 ACRES
 $C_{100} = 0.67$
 $L_{100} = 6.79 \text{ "/math>HR, } T_c = 30 \text{ MIN}$
 $Q_{100} = 0.77 \text{ CFS}$

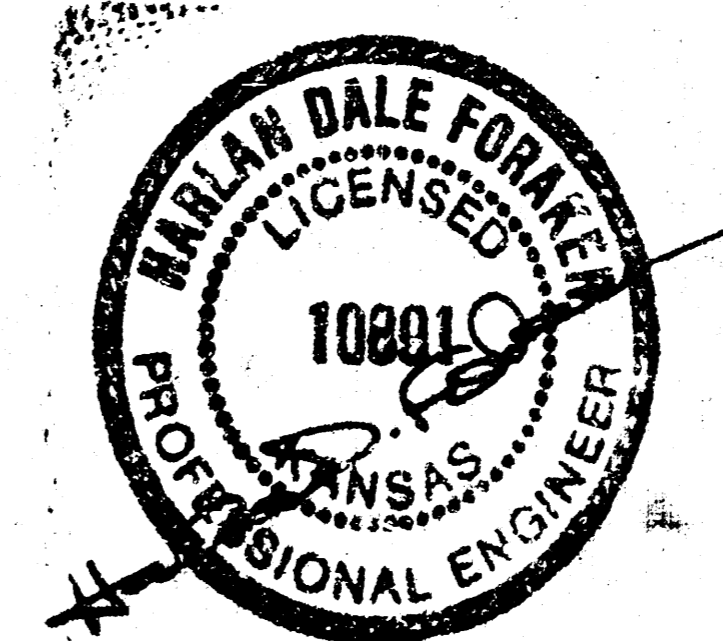
①
 DRAINAGE DATA
 AREA = 0.60 ACRES
 $C_{100} = 0.67$
 $L_{100} = 6.79 \text{ "/math>HR, } T_c = 30 \text{ MIN}$
 $Q_{100} = 2.73 \text{ CFS}$

OWNER: R. H. McCOMB
 2317 SAND PLUM CT.
 WICHITA, KS 67205

TOPO MADE NOVEMBER, 1997.

B.M. - ELEV. 101.82 = E. RIM OF MH AT SW COR.
 OF PROPERTY.

DRAINAGE PLAN PREPARED BY:
CERTIFIED ENGINEERING DESIGN
 CED
 438 NORTH OHIO
 WICHITA, KS 67214
 (316) 262-8808 Ph.
 (316) 262-9600 Fax



SANDALWOOD SURVEYING INC.
 P.O. BOX 75053
 WICHITA, KS 67275-5053

12-897