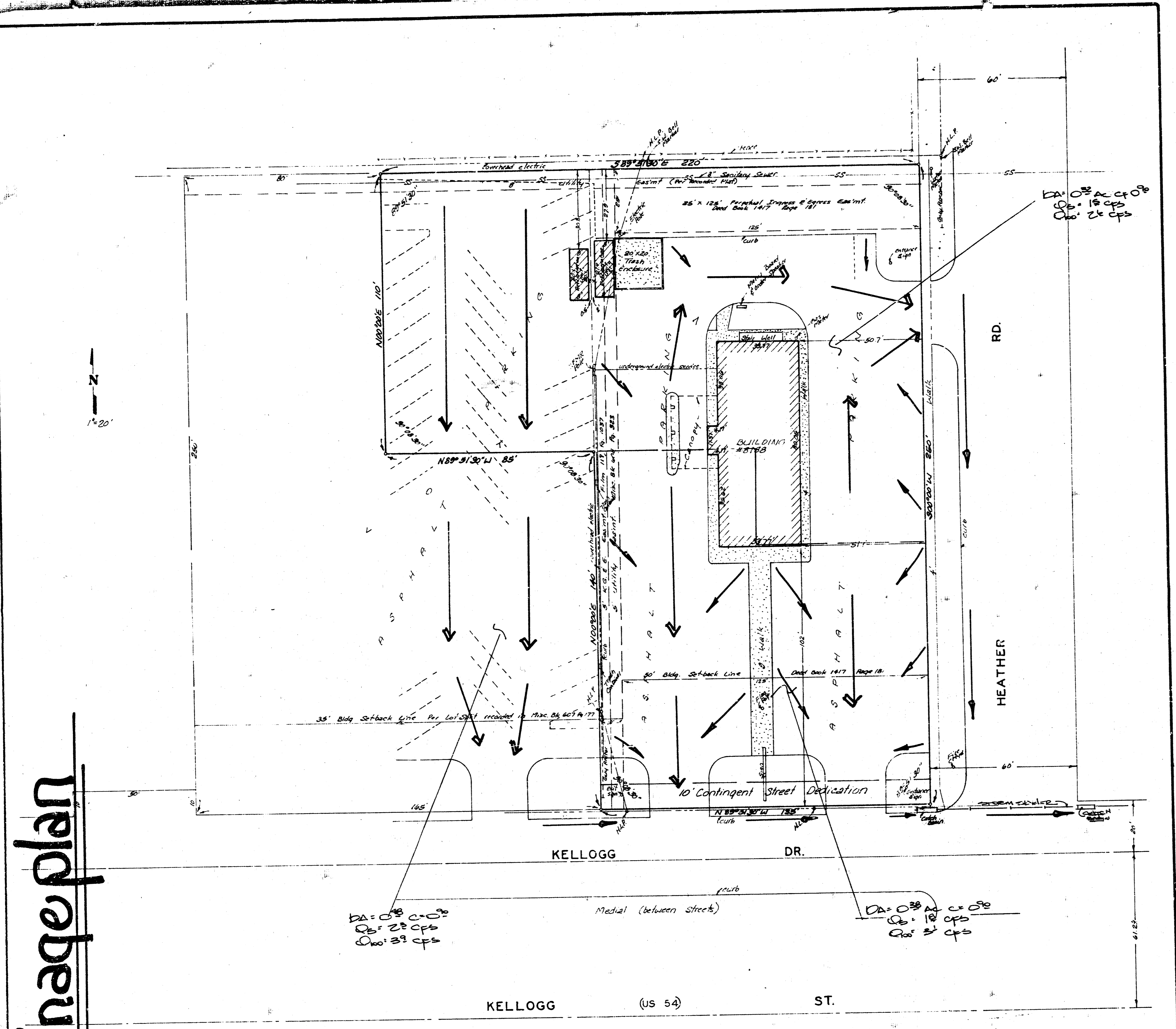


MCDONALD'S FIRST ADDITION
(DRAINAGE)



drainage plan

**SKETCH PLAT
MCDONALD'S FIRST ADDITION**

THE EAST 220 FEET OF LOT 7, RUTH ADDITION
TO WICHITA, KANSAS, EXCEPT THE WEST 85 FEET OF
THE SOUTH 140 FEET THEREOF

OWNER: MCDONALD'S CORPORATION

BAUGHMAN COMPANY, P.A.
SURVEYING & ENGINEERING
316/262-7271 • 330 LAURA • WICHITA, KANSAS 67211

BAUGHMAN COMPANY, P.A. SURVEYING & ENGINEERING 316/262-7271 • 330 LAURA • WICHITA, KANSAS 67211		SYSTEMS MEMO	
PROJECT	MCDONALD'S 1st ADDN.	DATE	6-1-83
JOB NO.		COPIES TO	
TO	CHRIS BERENSTEIN		
FROM	B. KLOOTER		
REFERENCE	DRAINAGE PLAN		

FINAL PLAT IS SCHEDULED FOR
SUBMISSION FOR JUNE 23, 1983.

THE LOT IS FULLY PAVED AND DEVELOPED.
RUNOFF DISCHARGES TO KELLOGG DR. THRU
3 DRENCHES AND TO HEATHER THRU ONE DRENCH.
EXISTING STORM SEWERS DISCHARGE THE
FLOW ON KELLOGG DR. INTO THE WILGYS
AS INDICATED. FLOW CALCULATIONS PER
AREA ARE SHOWN.