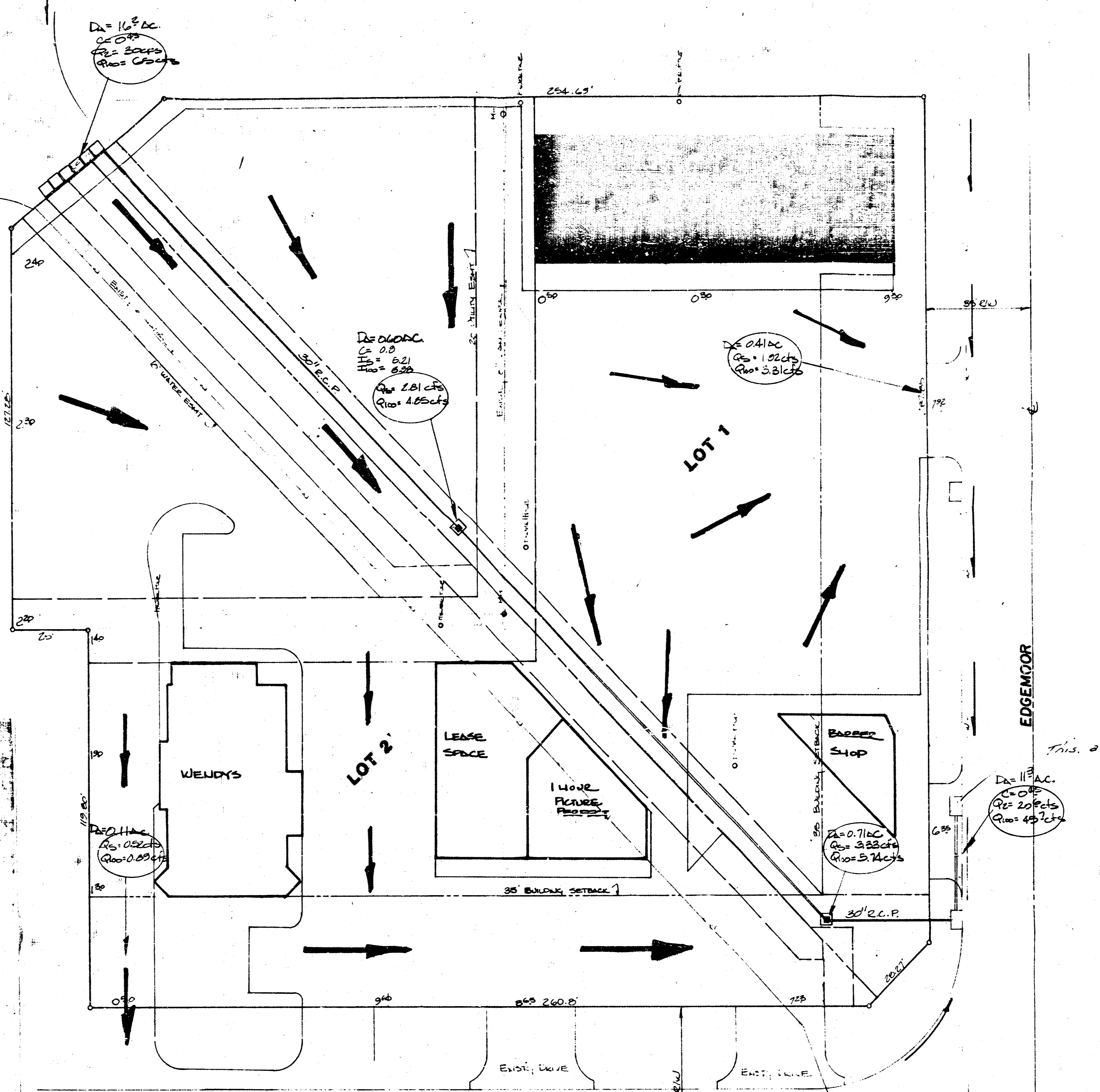
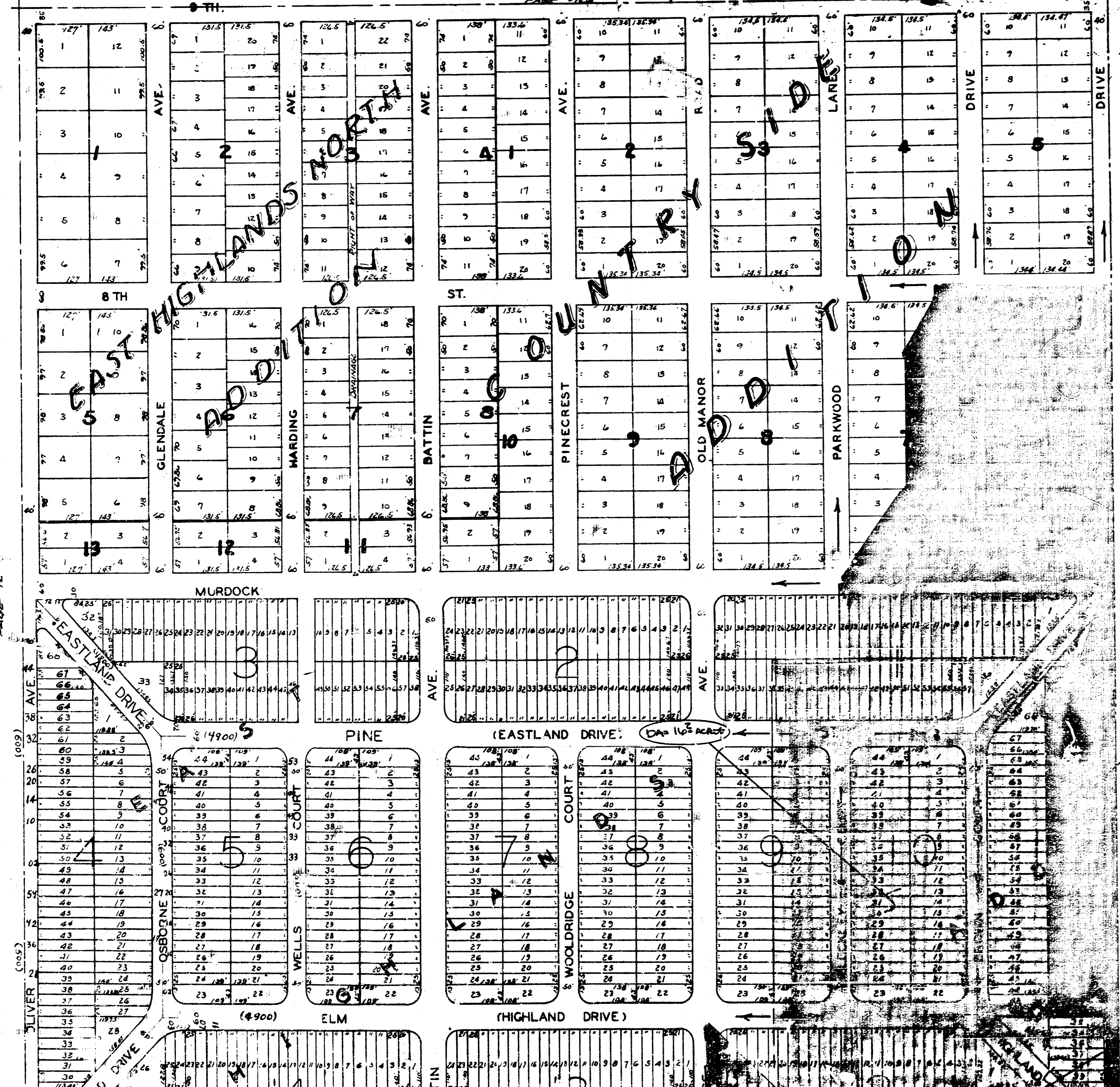


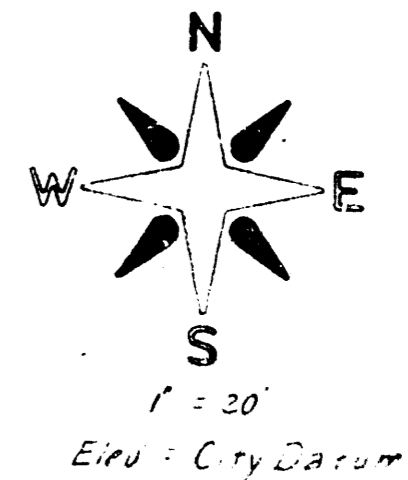
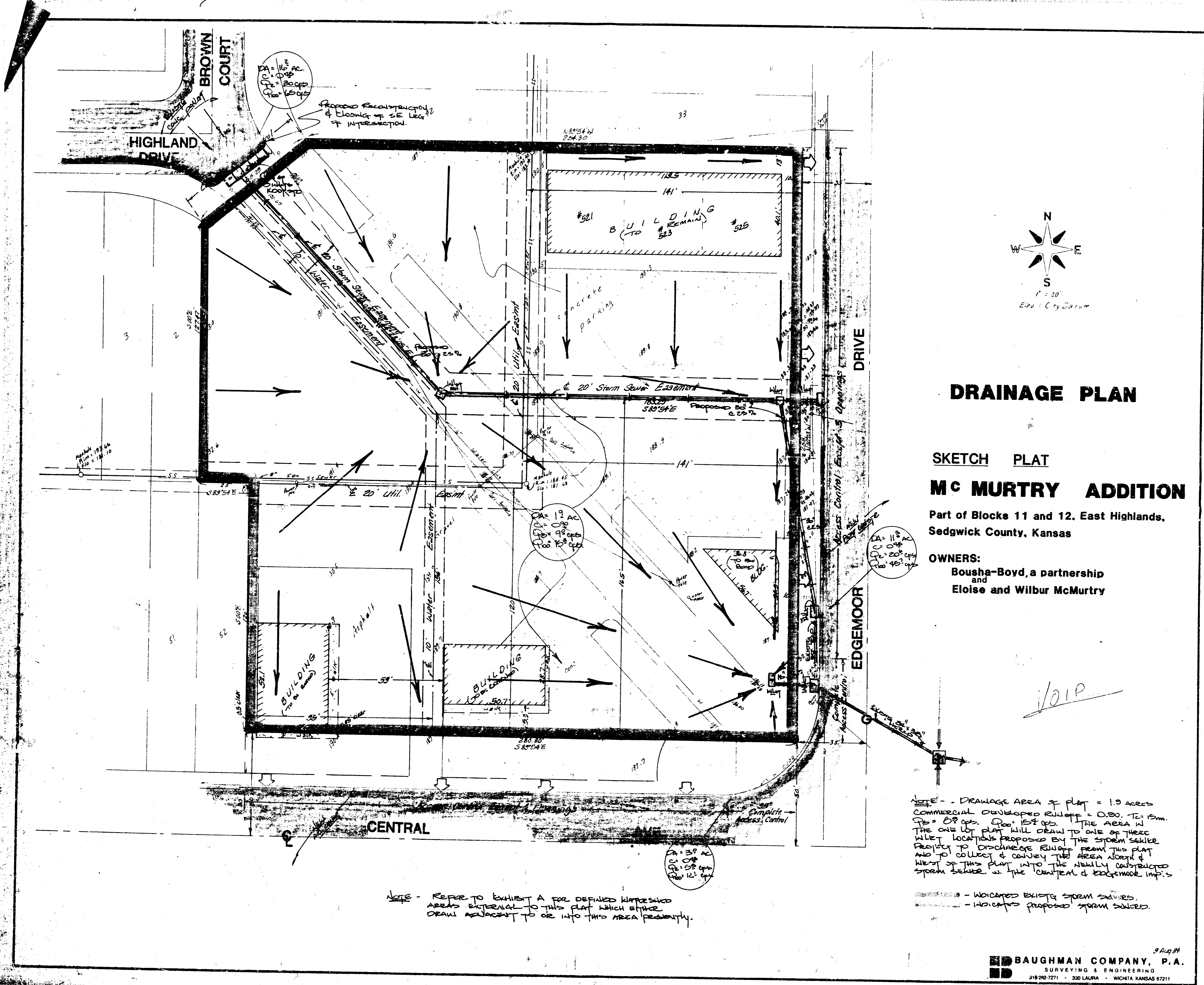
S.W. 1/4 SEC. 13, TWP. 27, R. 1 E.



DRAINAGE PLAN

SITE DEVELOPMENT AND UTILITY PLAN
MCMURTRY ADDITION
 BAUGHMAN COMPANY, P.A.
 SURVEYING & ENGINEERING
 311 W. 27th St. - 2nd Floor - WOKIA, KANSAS 67711

McMURTRY ADDITION
(Drainage)



DRAINAGE PLAN

**SKETCH PLAT
Mc MURTRY ADDITION**

Part of Blocks 11 and 12, East Highlands,
Sedgwick County, Kansas

OWNERS:
Bousha-Boyd, a partnership
and
Eloise and Wilbur McMurry

VOID

NOTE - DRAINAGE AREA OF PLOT = 1.0 ACRES
COMMERCIAL DEVELOPED BUILDUP = 0.50, TO 1.5m.
P₂ = 0.8 ops. P₁₀₀ = 1.5 ft ops. THE AREA IN
THE ONE LOT PLAT WILL DRAW TO ONE OF THESE
WILET LOCATIONS PROPOSED BY THE STORM SEWER
PROJECT TO DISCHARGE RUNOFF FROM THIS PLOT
AND TO COLLECT & CONVEY THE AREA NORTH &
WEST OF THIS PLOT INTO THE MAINLY SUBSISTED
STORM SEWER IN THE CENTRAL & EDGEMOOR IMP'S

NOTE - REFER TO EXHIBIT A FOR DEFINED WATERSHED
AREAS ADJACENT TO THIS PLOT WHICH OTHER
DRAW ADJACENT TO OR INTO THIS AREA PRESENTLY.