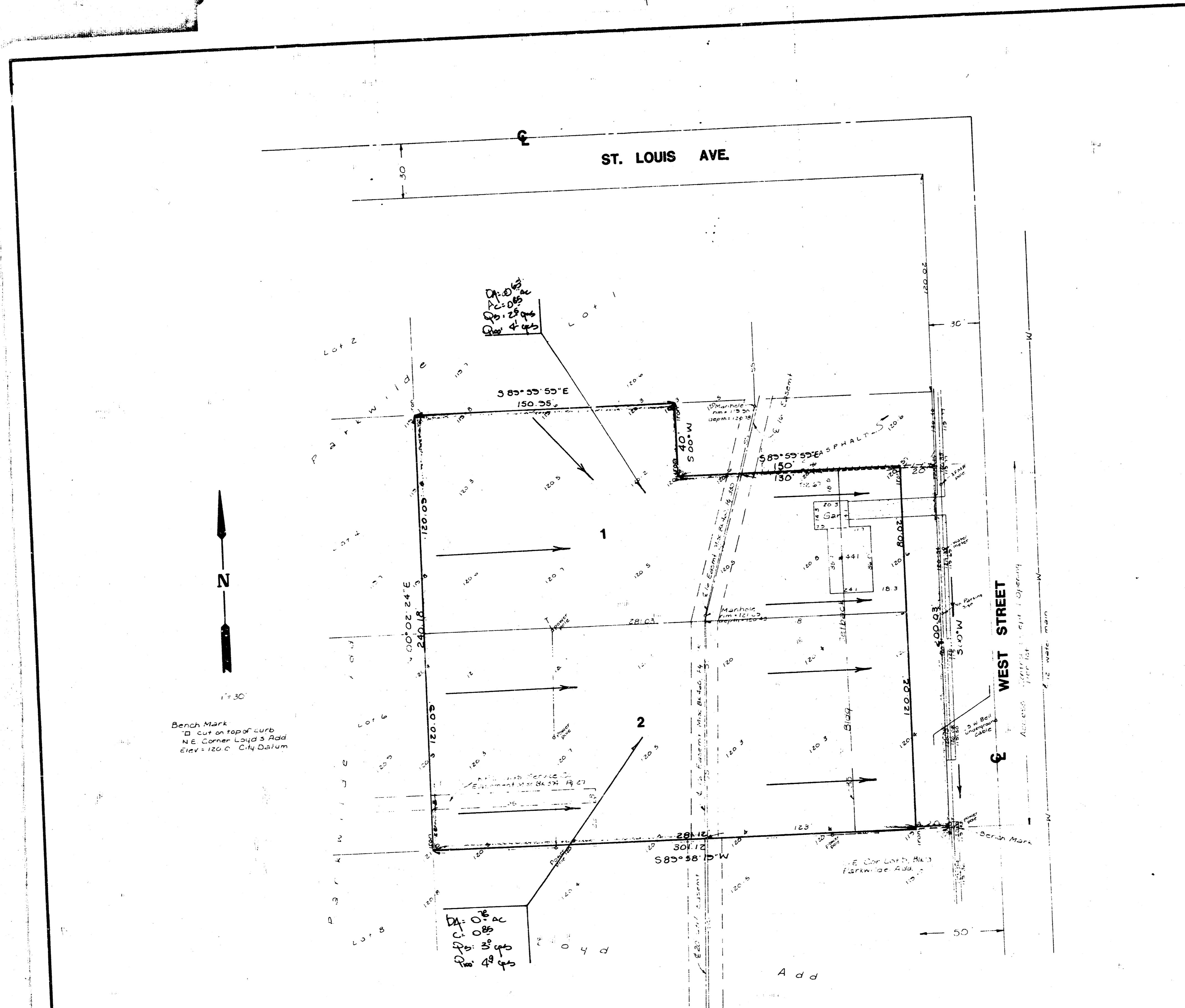


McPherson Add'n



Bench Mark
 □ cut on top of curb
 NE Corner Land & Add
 Elev. 120.0 City Datum

**SKETCH PLAT
 McPHERSON ADDITION**

LOT 3, EXCEPT THE NORTH 40 FEET OF THE EAST 150 FEET THEREOF
 ALL OF LOT 5, BLOCK 9, PARKWILDE ADDITION

OWNERS:
 McPHERSON COLLEGE
 JAMES M. DODSON - VICE-PRES.
 WESTWAY CAR WASH, INC.
 HUGH MOXLEY - PRES.

Revised 3/9/09
DRAINAGE PLAN

Note: These lots shall discharge runoff to West St. thru drives, ditches or other means at a rate equal to the pre-development runoff rate. Development plans & construction of new facilities on these lots shall provide for storage capacity to retain the additional runoff generated.

BAUGHMAN COMPANY, P.A.
 SURVEYING & ENGINEERING
 316-262-7271 • 315 ELLIS • WICHITA, KANSAS 67211
 - Approved 3/16/09