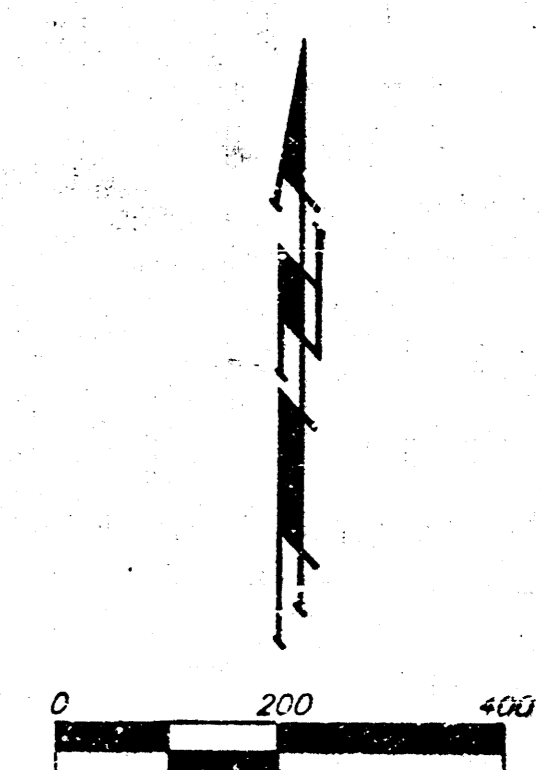
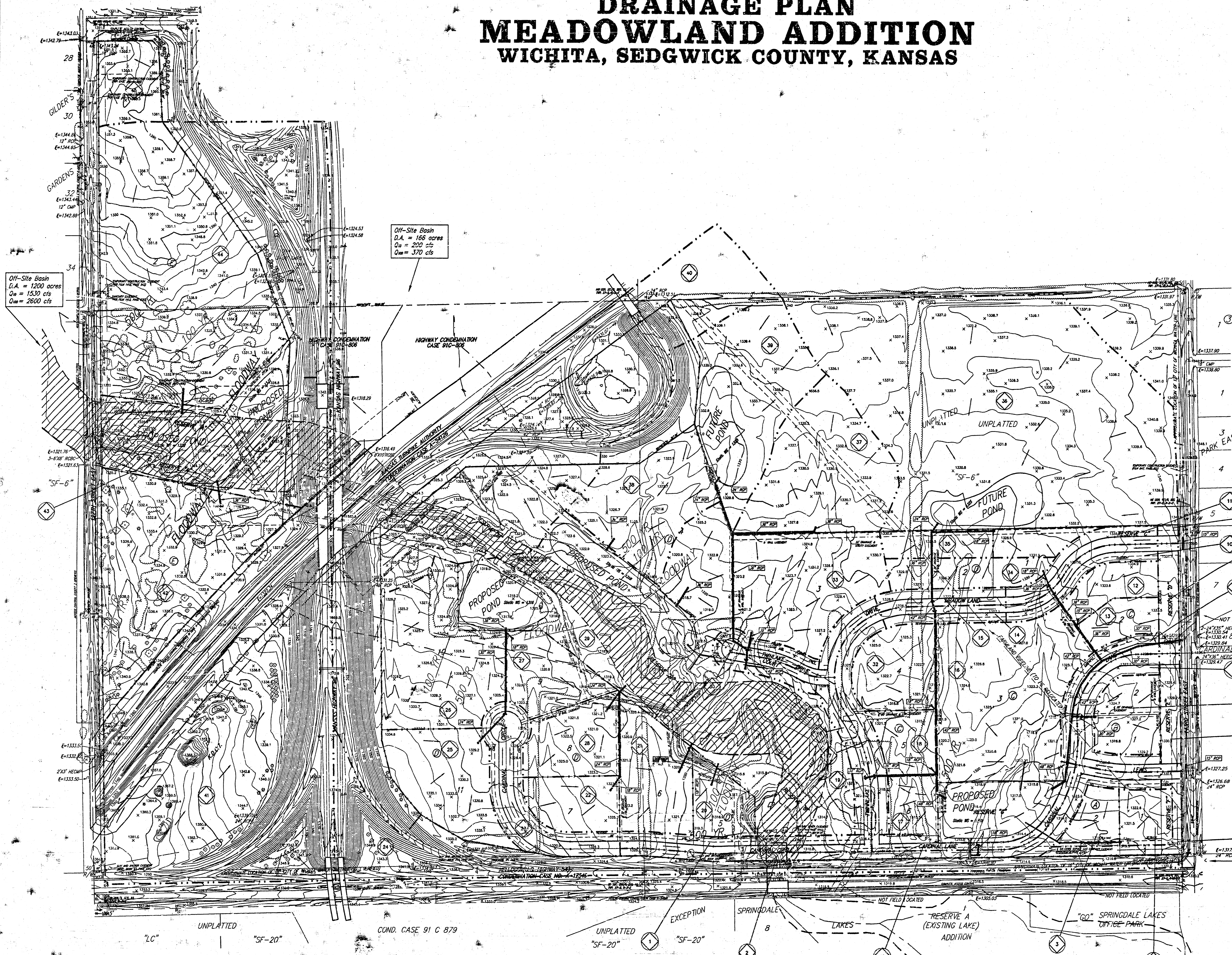


# DRAINAGE PLAN MEADOWLAND ADDITION WICHITA, SEDGWICK COUNTY, KANSAS



Basin ID	Area (Acres)	2 yr (cfs)	100 yr (cfs)	Peak (cfs)	Peak (cfs)
1	2.2	0.74	0.84	0.84	10.5
2	3.1	0.74	0.84	0.84	12.3
3	1.4	0.74	0.84	4.0	5.6
4	1.5	0.74	0.84	4.3	6.0
5	1.1	0.74	0.84	3.1	4.4
6	1.2	0.74	0.84	3.4	4.8
7	2.4	0.74	0.84	6.8	9.5
8	2.0	0.74	0.84	5.7	7.9
9	1.6	0.74	0.84	4.5	6.3
10	1.5	0.74	0.84	4.3	6.0
11	1.6	0.74	0.84	4.5	6.3
12	1.5	0.74	0.84	4.3	6.0
13	1.5	0.74	0.84	4.3	6.0
14	1.1	0.74	0.84	3.1	4.4
15	1.1	0.74	0.84	3.1	4.4
16	10.0	0.74	0.84	30.9	43.3
17	4.5	0.74	0.84	13.6	19.0
18	1.9	0.74	0.84	5.1	7.1
19	10.0	0.32	0.37	10.2	14.1
20	2.0	0.74	0.84	6.7	9.2
21	4.2	0.74	0.84	11.9	16.5
22	2.5	0.74	0.84	7.7	10.6
23	3.8	0.74	0.84	10.8	14.7
24	10.4	0.74	0.84	23.5	32.5
25	2.0	0.74	0.84	6.7	9.2
26	3.1	0.74	0.84	8.4	11.5
27	3.1	0.74	0.84	8.4	11.5
28	3.3	0.74	0.84	9.4	12.9
29	12.8	0.32	0.37	16.4	22.4
30	1.0	0.74	0.84	2.8	3.9
31	1.0	0.74	0.84	2.8	3.9
32	5.3	0.74	0.84	14.4	19.8
33	1.2	0.74	0.84	3.7	5.1
34	2.4	0.74	0.84	6.8	9.5
35	3.8	0.74	0.84	9.8	13.5
36	4.5	0.50	0.54	6.3	8.6
37	8.2	0.50	0.54	10.7	14.6
38	8.2	0.50	0.54	10.7	14.6
39	8.8	0.50	0.54	11.5	15.8
40	35.0	0.32	0.37	44.4	60.1
41	30.1	0.32	0.37	38.0	51.7
42	12.2	0.74	0.84	31.8	43.7
43	2.5	0.32	0.37	7.5	10.3
44	15.8	0.74	0.84	40.1	54.8
45	2.6	0.74	0.84	6.7	9.2
46	2.2	0.74	0.84	5.2	7.1
47	2.0	0.74	0.84	5.1	7.0
48	1.2	0.74	0.84	3.4	4.7
49	0.2	0.74	0.84	0.8	1.1



Off-Site Basin  
D.A. = 1200 acres  
Q<sub>2</sub> = 1530 cfs  
Q<sub>100</sub> = 2600 cfs

Off-Site Basin  
D.A. = 166 acres  
Q<sub>2</sub> = 200 cfs  
Q<sub>100</sub> = 370 cfs

Off-Site Basin  
D.A. = 13 acres  
Q<sub>2</sub> = 23 cfs  
Q<sub>100</sub> = 37 cfs

Off-Site Basin  
D.A. = 7 acres  
Q<sub>2</sub> = 10 cfs  
Q<sub>100</sub> = 15 cfs

NOTE: Pipe sizes shown on this plan shall not be considered as final design. Sizes shall be adjusted as necessary upon establishing final street grades.

NOTE: The proposed drainage plan provided herein is a generally defined plan to follow for design. It is recognized and assumed that upon the final design of street and storm sewer improvements within this plan that the designer will modify or alter the general drainage plan as necessary in order to implement the installation of the improvements to obtain the most economical design and construction possible.

29 JANUARY 2001