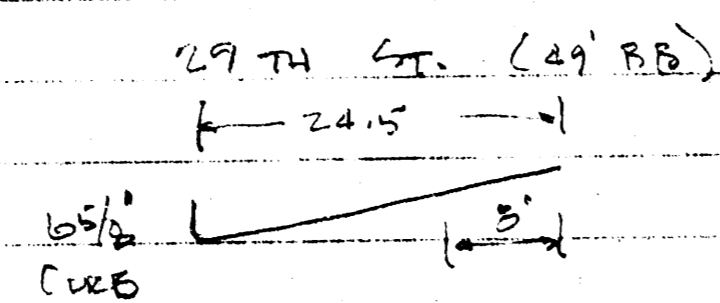


5-27-95

MEADOW DARS - DRAINAGE PLAN



6" DEPTH = 16.5' SPREAD (ONE 8' LANE OPEN)

STREET SLOPE = 0.1% @ 6" DEPTH = 13.0 cfs

RESTRICT OUTFLOW FROM LOT 1 BLOCK 1 TO 6.5'

SOIL GROUP D
 MEADOW GOOD CONDITION CU = 75 PRESENT
 COMMON PRAIRIES CU = 95 FUTURE

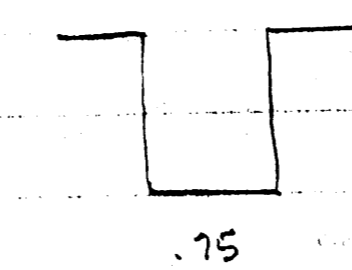
6" 100% FINE SAND 5.9" USE 6.0"

RUNOFF 5.58 PRESENT
 5.91 FUTURE
 .185 DIFFERENCE

5.5 x 435.0 x 16.5' + 12 = 55,000 G.F. STORAGE

100 x 392 @ 1' DEEP

USE WEIR OR PIPE TO CONTROL OUTFLOW



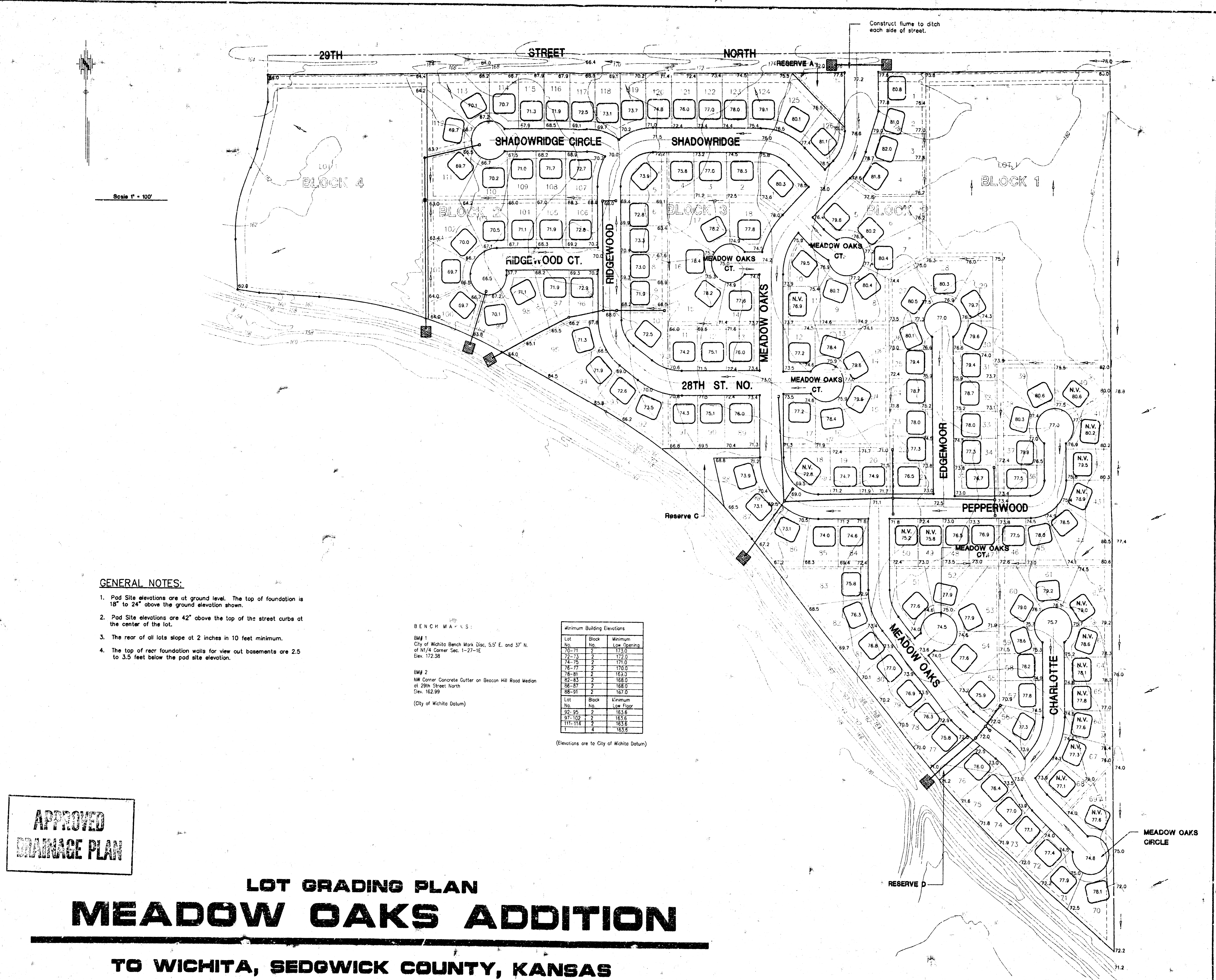
$Q = CLH^{3/2}$ C = 3.0

H = 1 Q = 2.3 cfs
 H = 1.5 Q = 4.1 cfs
 H = 2 Q = 6.4 cfs

12" RCP WITH CONTROL 22" HD @ 6.0 cfs

ON LOT 1 BLOCK 1

PROVIDE 55,000 G.F. OF STORAGE WITH A 12" RCP
 DISCHARGE PIPE OR A 9" WIDE BRICK OPEN
 WEIR TO CONTROL OUTFLOW. MAXIMUM DEPTH
 OF POURING TO BE 24" OR SUBMIT ALTERNATE
 STORM WATER DISTRIBUTION PLAN TO REDUCE
 Q TO FLOW TO 6.0 cfs.



GENERAL NOTES:

1. Pad Site elevations are at ground level. The top of foundation is 18" to 24" above the ground elevation shown.
2. Pad Site elevations are 42" above the top of the street curbs at the center of the lot.
3. The rear of all lots slope at 2 inches in 10 feet minimum.
4. The top of rear foundation walls for view out basements are 2.5 to 3.5 feet below the pad site elevation.

BENCH MARKS:

BM# 1
City of Wichita Bench Mark Disc, 5.5' E. and 37' N.
of N1/4 Corner Sec. 1-27-1E
Elev. 172.58

BM# 2
NW Corner Concrete Cutter on Beacon Hill Road Median
at 29th Street North
Elev. 162.99
(City of Wichita Datum)

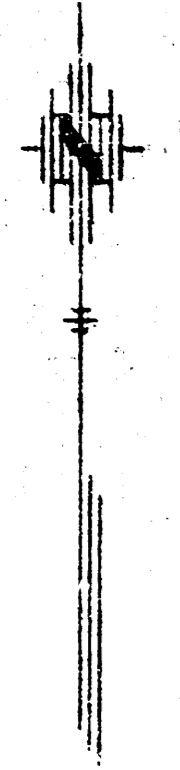
Minimum Building Elevations		
Lot No.	Block No.	Minimum Low Opening
70-71	2	173.0
72-73	2	172.0
74-75	2	171.0
76-77	2	170.0
78-81	2	169.0
82-83	2	168.0
86-87	2	168.0
88-91	2	167.0
Lot No.	Block No.	Minimum Low Floor
92-95	2	163.6
97-102	2	163.6
111-114	2	163.6
1	4	163.5

(Elevations are to City of Wichita Datum)

**APPROVED
DRAINAGE PLAN**

**LOT GRADING PLAN
MEADOW OAKS ADDITION**

TO WICHITA, SEDGWICK COUNTY, KANSAS



Scale 1" = 100'

GENERAL NOTES:

1. Drainage from the adjacent property to the East must be diverted South at the East property line of Meadow Oaks.
2. The design of "V" Swales are based on a slope of .004, 10:1 slopes and an "N" value of .030.
3. Runoff calculations are based on a 15 min. minimum time of concentration, a "C" value of 0.5 for residential and 0.8 for commercial. The corresponding "I" values are 3.83, 4.56, 7.37 for 2, 5 and 100 year storms.

LINE NO. 1					
Location	Q	Pipe	2YR. Bypass	100YR. Bypass	Comments
1-2	4.4	15"	-	4.1	Mt at Point No. 2
2-3	4.4	15"	-	11.5	End Section w/ Rip-Rap @ Pt. 3

LINE NO. 1					
Location	Q	Surface Drainage	Depth	Width	Comments
1-2	4.1	"V" Swale	0.5	12"	100 Yr. Storm
2-2	11.5	"V" Swale	0.82	16.5'	100 Yr. Storm

LINE NO. 2					
Location	Q	Pipe	2YR. Bypass	100YR. Bypass	Comments
1-2	3.8	15"	-	3.6	End Section w/ Rip-Rap @ Pt. 2

LINE NO. 2					
Location	Q	Surface Drainage	Depth	Width	Comments
1-2	3.6	"V" Swale	0.5	10"	100 Yr. Storm

LINE NO. 3					
Location	Q	Pipe	2YR. Bypass	100YR. Bypass	Comments
1-2	7.4	18"	-	-	Quain Pipe
2-3	11.9	24"	-	-	Quain Pipe
3A-3B	3.5	15"	-	-	Quain Pipe
3B-3	6.5	18"	-	6.0	Bypass overflows down rear lot line @ 3B
3-4	32.7	36"	-	-	Quain Pipe
4-5	32.7	36"	-	-	End Section w/ Rip-Rap @ Pt. 5

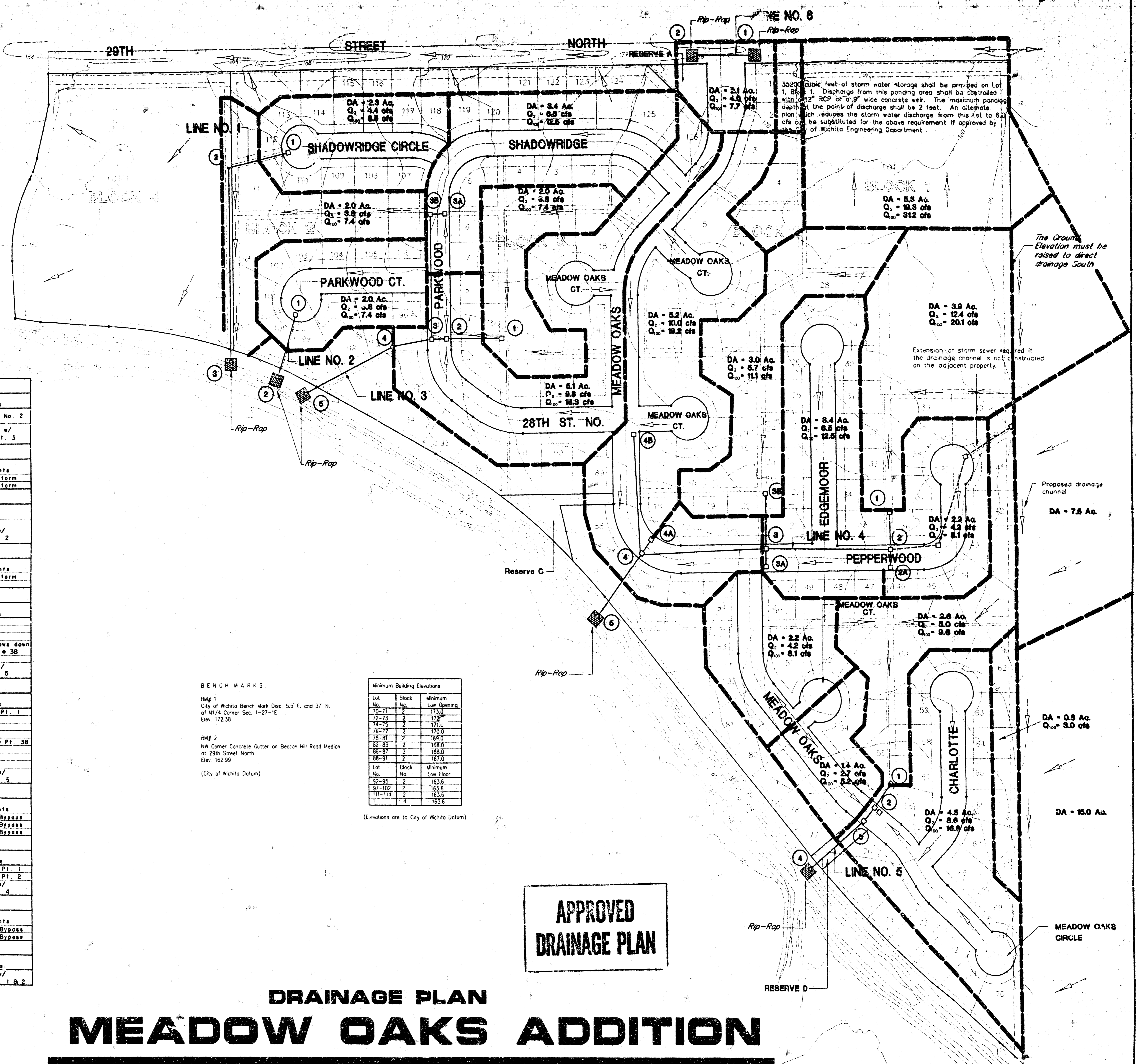
LINE NO. 4					
Location	Q	Pipe	2YR. Bypass	100YR. Bypass	Comments
1-2	12.4	24"	-	7.7	Drop Inlet @ Pt. 1
2A-2	2.1	15"	-	-	-
2-3	16.6	24"	-	-	-
3A-3	2.0	15"	-	-	-
3B-3	5.7	18"	-	5.4	Drop Inlets @ Pt. 3B
3-4	29.8	36"	-	-	-
4A-4	3.8	15"	-	-	-
4B-4	4.0	15"	-	-	-
4-5	38.8	42"	-	32.2	End Section w/ Rip-Rap @ Pt. 5

LINE NO. 4					
Location	Q	Surface Drainage	Depth	Width	Comments
1-2	7.7	"V" Swale	0.7	14"	100 Yr. Bypass
3B-3	5.4	"V" Swale	0.6	12"	100 Yr. Bypass
4-5	32.2	"V" Swale	1.20	24.2'	100 Yr. Bypass

LINE NO. 5					
Location	Q	Pipe	2YR. Bypass	100YR. Bypass	Comments
1-2	5.0	18"	-	4.6	Drop Inlet @ Pt. 1
2-3	13.2	24"	-	-	Obi. Inlet @ Pt. 2
3-4	16.3	30"	-	15.1	End Section w/ Rip-Rap @ Pt. 4

LINE NO. 5					
Location	Q	Surface Drainage	Depth	Width	Comments
1-2	4.6	"V" Swale	0.6	12"	100 Yr. Bypass
3-4	15.1	"V" Swale	0.9	18"	100 Yr. Bypass

LINE NO. 6					
Location	Q	Pipe	2YR. Bypass	100YR. Bypass	Comments
1-2	10.0	24"	-	3.7	End Section w/ Rip-Rap @ Pt. 1 & 2



BENCH MARKS:

BM# 1
City of Wichita Bench Mark Dec. 5.5' E. and 37' N. of N1/4 Corner Sec. 1-27-1E Elev. 172.35

BM# 2
NW Corner Concrete Gutter on Beacon Hill Road Median at 29th Street North Elev. 162.99
(City of Wichita Datum)

Minimum Building Elevations		
Lot No.	Block No.	Minimum Low Opening
72-71	2	173.0
72-73	2	172
74-75	2	171.6
76-77	2	170.0
78-81	2	169.0
82-83	2	168.0
86-87	2	168.0
88-91	2	167.0

Minimum Low Floor		
Lot No.	Block No.	Minimum Low Floor
92-95	2	163.6
97-102	2	163.6
111-114	2	163.6
1	4	163.6

(Elevations are to City of Wichita Datum)

**APPROVED
DRAINAGE PLAN**

**DRAINAGE PLAN
MEADOW OAKS ADDITION**

TO WICHITA, SEDGWICK COUNTY, KANSAS