

- GENERAL NOTES:**
- Drainage from the adjacent property to the East must be diverted South of the East property line of Meadow Oaks.
  - The design of "V" Swales are based on a slope of .004, 10:1 slopes and an "N" value of .030.
  - Runoff calculations are based on a 15 min. minimum time of concentration, a "C" value of 0.5 for residential and 0.8 for commercial. The corresponding "T" values are 3.53, 4.56, 7.37 for 2, 5 and 100 year storms.

LINE NO. 1					
Location	Q	Pipe	SW. System	100% System	Comments
1-2	4.4	18"	-	4.1	MI at Point No. 2
2-3	4.4	18"	-	11.5	End Section w/ Rip-Rap at Pt. 3

LINE NO. 1					
Location	Q	Drainage	Depth	Width	Comments
1-2	4.1	"V" Swale	0.8	18"	100 Yr. Storm
2-3	11.5	"V" Swale	0.88	18.5"	100 Yr. Storm

LINE NO. 2					
Location	Q	Pipe	SW. System	100% System	Comments
1-2	3.8	15"	-	3.6	End Section w/ Rip-Rap at Pt. 2

LINE NO. 2					
Location	Q	Drainage	Depth	Width	Comments
1-2	3.6	"V" Swale	0.8	10"	100 Yr. Storm

LINE NO. 3					
Location	Q	Pipe	SW. System	100% System	Comments
1-2	7.4	18"	-	-	Swain Pipe
2-3	11.9	24"	-	-	Swain Pipe
3-4	3.5	12"	-	-	Swain Pipe
3-4	6.5	18"	-	6.0	Bypass overflow down face into line # 3B
3-4	32.7	36"	-	-	Down Pipe
4-5	32.7	36"	-	-	End Section w/ Rip-Rap at Pt. 5

LINE NO. 4					
Location	Q	Pipe	SW. System	100% System	Comments
1-2	2.8	15"	-	-	End Sec.
2-3	3.5	18"	-	-	End Sec.
3-4	8.0	18"	-	-	End Sec.
3-4	21.6	36"	-	-	Down Pipe
4-5	8.0	18"	-	-	End Section w/ Rip-Rap at Pt. 5
4-5	34.6	36"	-	-	End Section w/ Rip-Rap at Pt. 5

LINE NO. 4					
Location	Q	Drainage	Depth	Width	Comments
3B-3	5.4	"V" Swale	0.8	18"	100 Yr. Storm
2-3	25.8	"V" Swale	1.30	18"	100 Yr. Storm

LINE NO. 5					
Location	Q	Pipe	SW. System	100% System	Comments
1-2	8.0	18"	-	4.8	Drop into # 2
2-3	13.2	24"	-	-	Drop into # 2
3-4	18.5	30"	-	15.1	End Section w/ Rip-Rap at Pt. 4

LINE NO. 5					
Location	Q	Drainage	Depth	Width	Comments
1-2	4.8	"V" Swale	0.8	18"	100 Yr. Storm
2-3	15.1	"V" Swale	0.8	18"	100 Yr. Storm

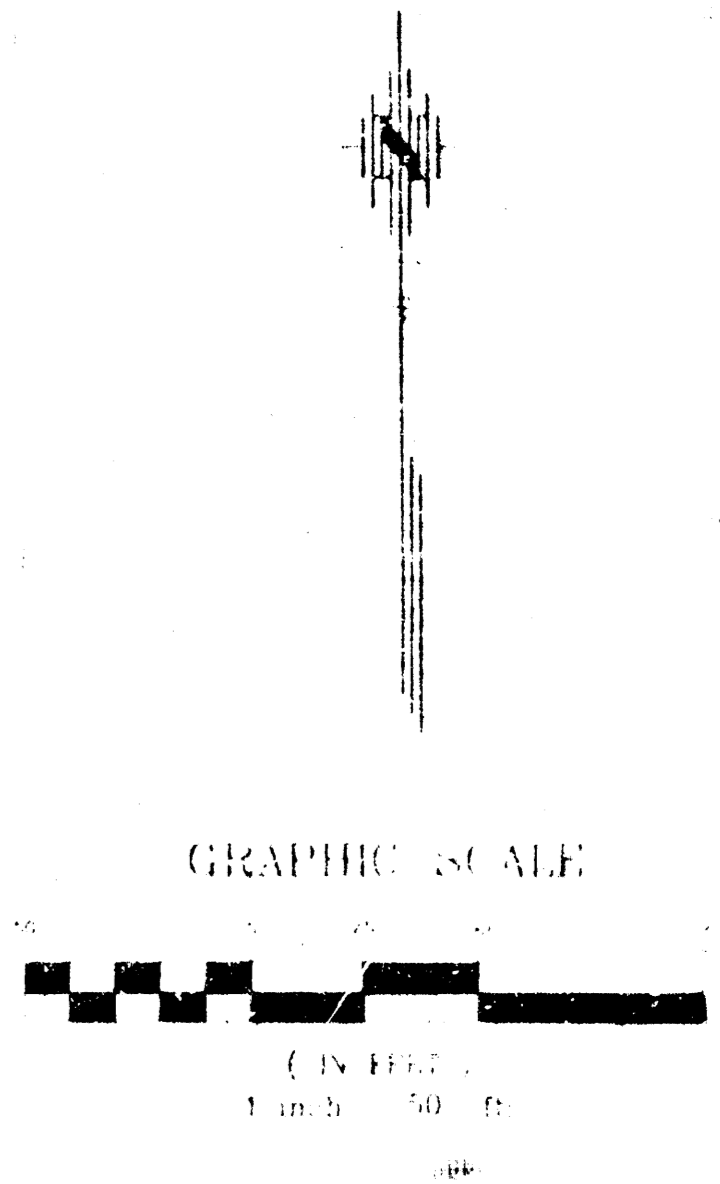
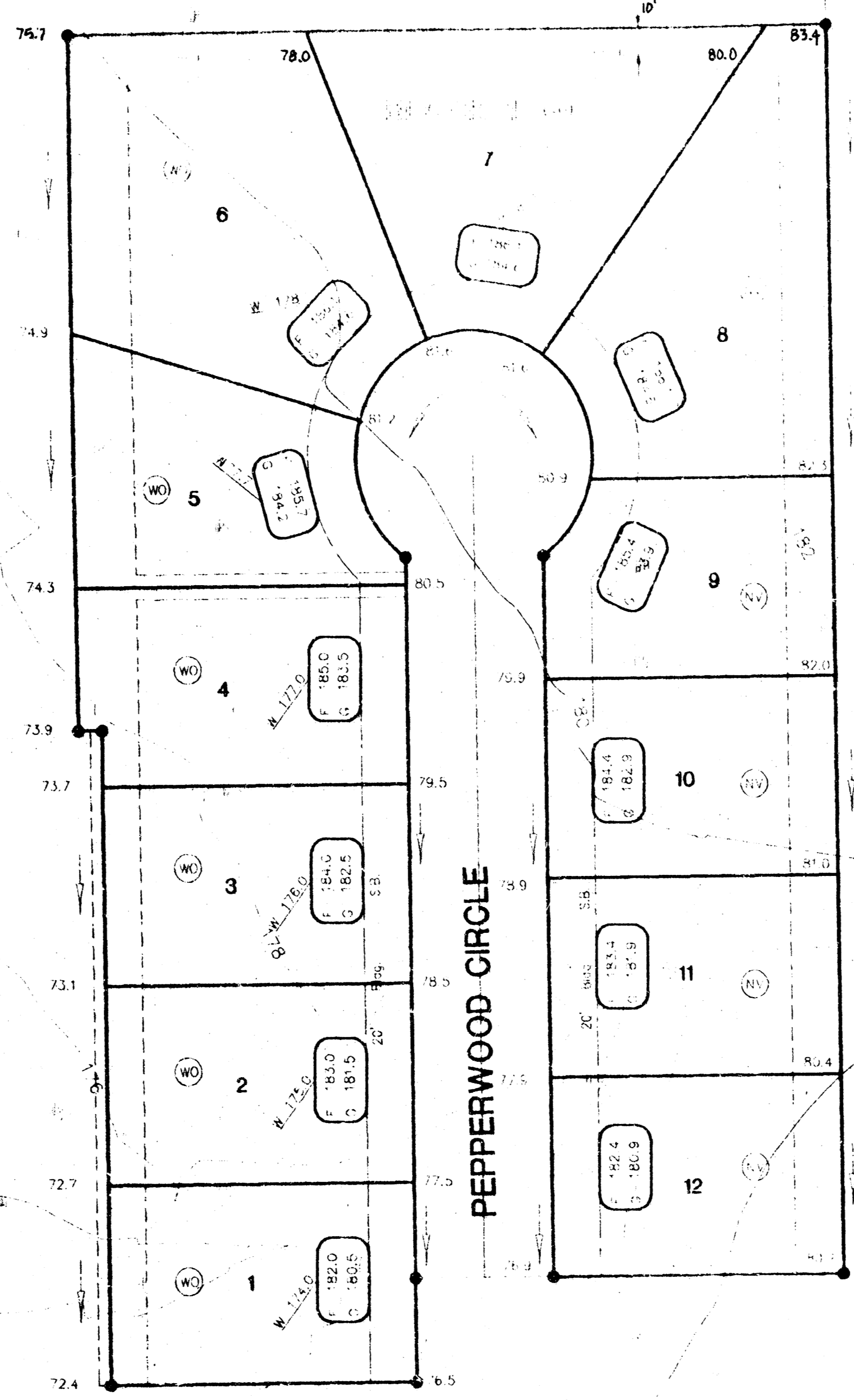
LINE NO. 6					
Location	Q	Pipe	SW. System	100% System	Comments
1-2	10.0	24"	-	8.7	End Section w/ Rip-Rap at Pt. 1 & 2

**DRAINAGE PLAN  
MEADOW OAKS ADDITION  
TO WICHITA, SEDGWICK COUNTY, KANSAS**

DATE: 6-1-93  
Revised: 9-8-95

F:\WORK\DCAP\DESIGN\DRAINAGE - Mon, Sep 11 08:21:36 1995 Steve Schmidt, P.E. & ASSOC.

**APPROVED  
DRAINAGE PLAN**



**LEGEND**

- G = GARAGE FLOOR ELEVATION
- F = TOP OF FOUNDATION WALL ELEVATION
- R = TOP OF REAR WALL ELEVATION (VIEW OUT)
- W = BASEMENT FLOOR ELEVATION (WALK OUT)
- ⊙ = NO VIEW OUT
- ⊙ = VIEW OUT
- ⊙ = WALK OUT

**BENCHMARKS**

- (City of Wichita Datum)
1. City of Wichita Benchmark Disc, 5.5' E. and 37' N. of N 1/4 Corner Sec. 1-27-1E Elev. 172.38
  2. NW Corner Concrete Gutter on Beacon Hill Road Median at 29th Street North Elev. 162.99

**LOT GRADING PLAN  
THE MEADOW OAKS 3RD ADDITION**

**TO WICHITA, SEDGWICK COUNTY, KANSAS**

**NE 1/4, SECTION 1, T27S, R1E**

**JANUARY 22, 1996**

E:\APPS\DATA\6300\LT090 Mon Jan 22 14:51:07 1996 Steve Schmidt Pkg 6 ASSOC.