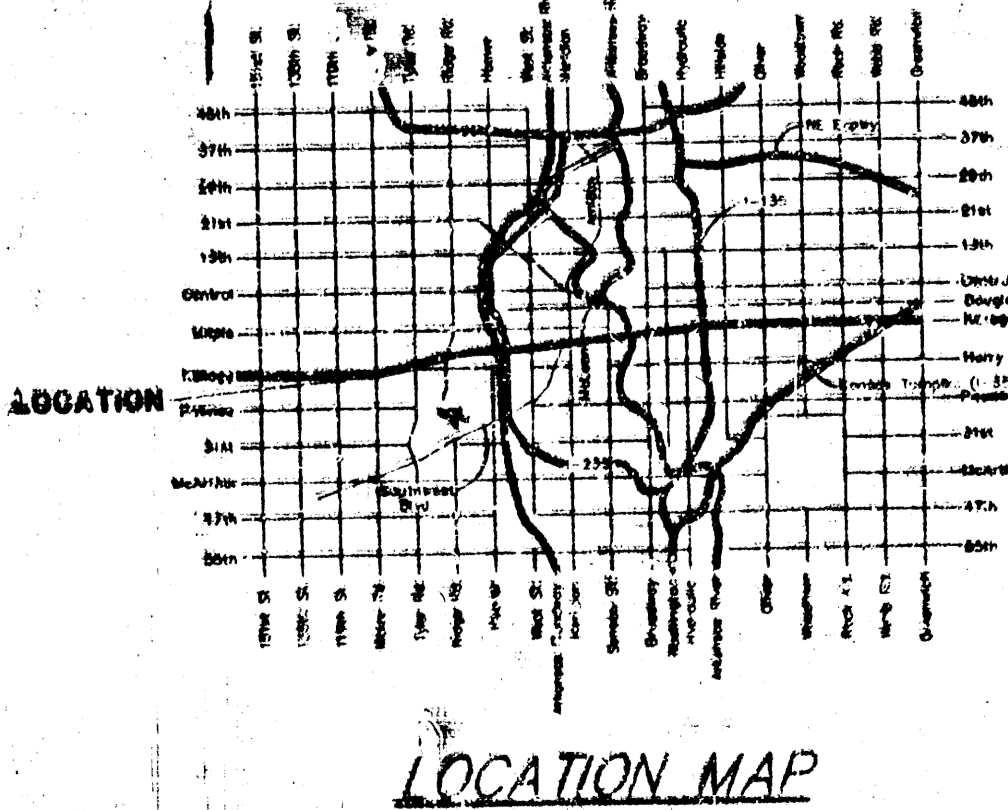
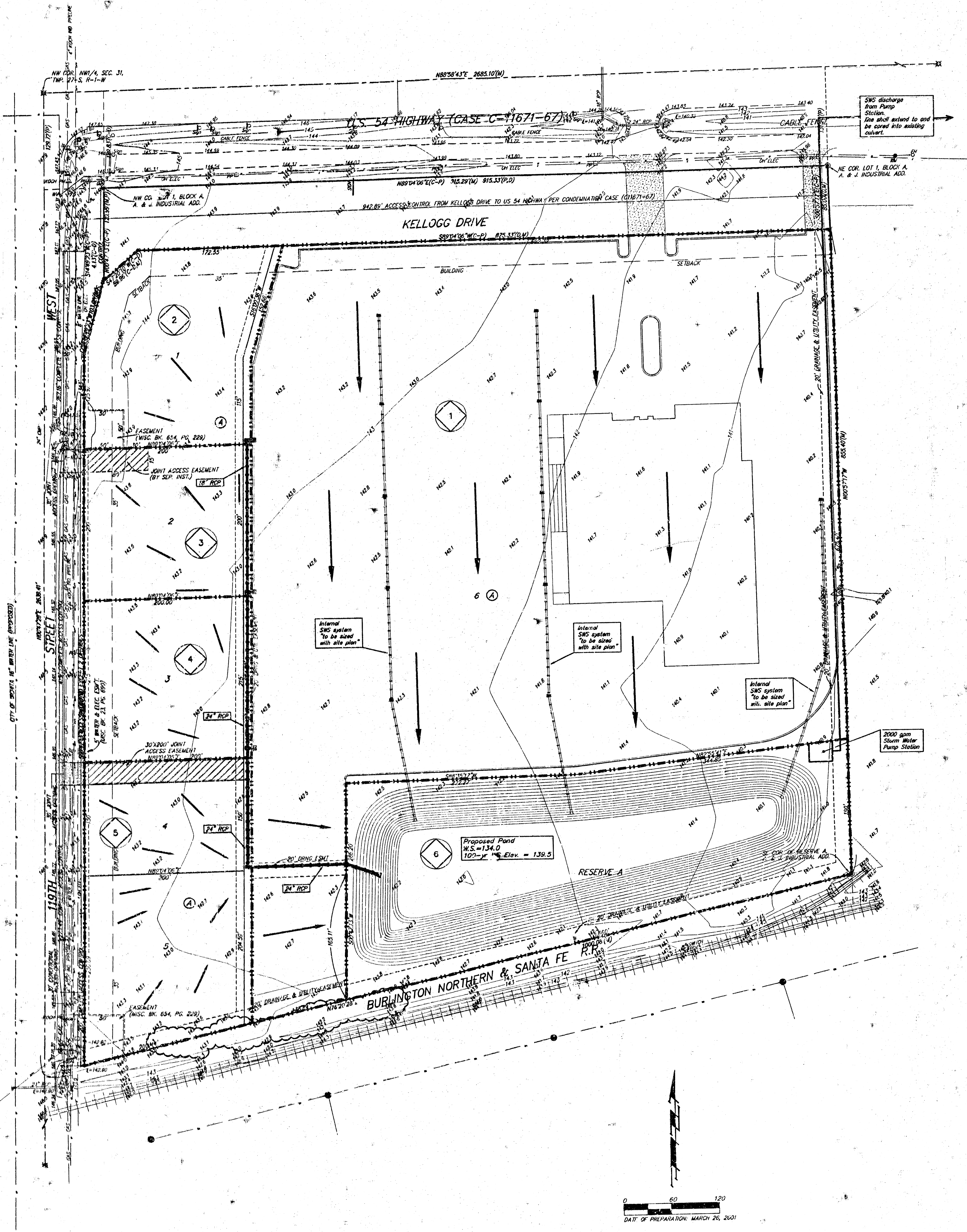


DRAINAGE PLAN MEL HAMBELTON ADDITION WICHITA, SEDGWICK COUNTY, KANSAS



Drainage Area	Area (Acres)	C _s	C _m	T _c (min)	L _c (ft)	L _c (ft)	Q _c (cfs)	Q _c (cfs)
1	12.6	0.85	0.81	15	4.56	7.37	50	80
2	1.3	0.85	0.81	15	4.56	7.37	5.0	8.1
3	1.0	0.85	0.81	15	4.56	7.37	3.9	6.7
4	1.0	0.85	0.81	15	4.56	7.37	3.9	6.7
5	1.6	0.85	0.81	15	4.56	7.37	7.0	12
6	3.7	0.81	0.81	15	4.56	7.37	14	22

0 60 120
DATE OF PREPARATION: MARCH 26, 2001

MINIMUM BUILDING PAD ELEVATIONS FOR LOWEST OPENING TO THE STRUCTURES		
LOT	BLOCK	ELEVATION
6	A	144.0

City of Wichita Use: 12.80' south of concrete slab, 13.00' north of cable guard rail and 55.5' east of center line of 1920 St. West. Elevation = 745.96 (City Datum)