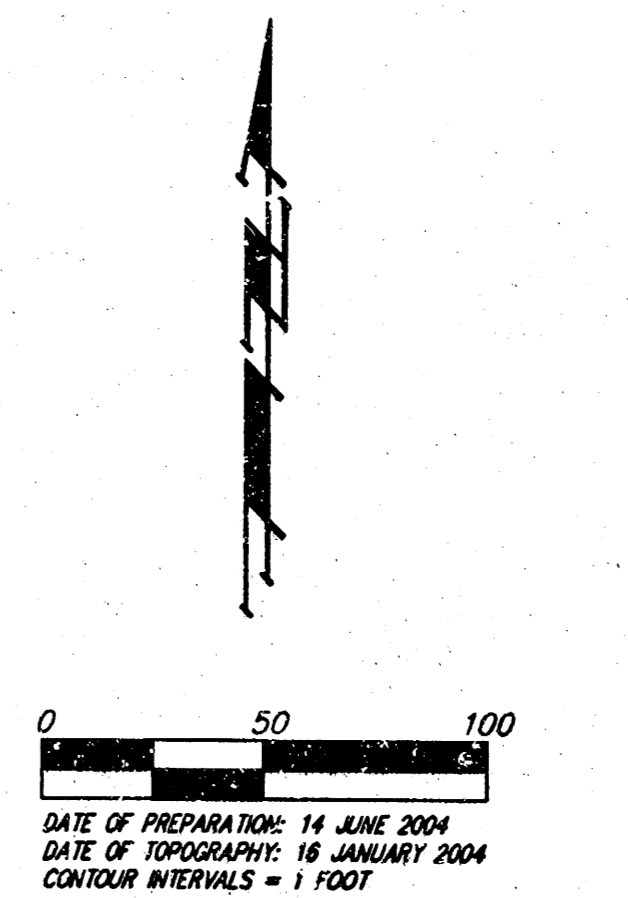
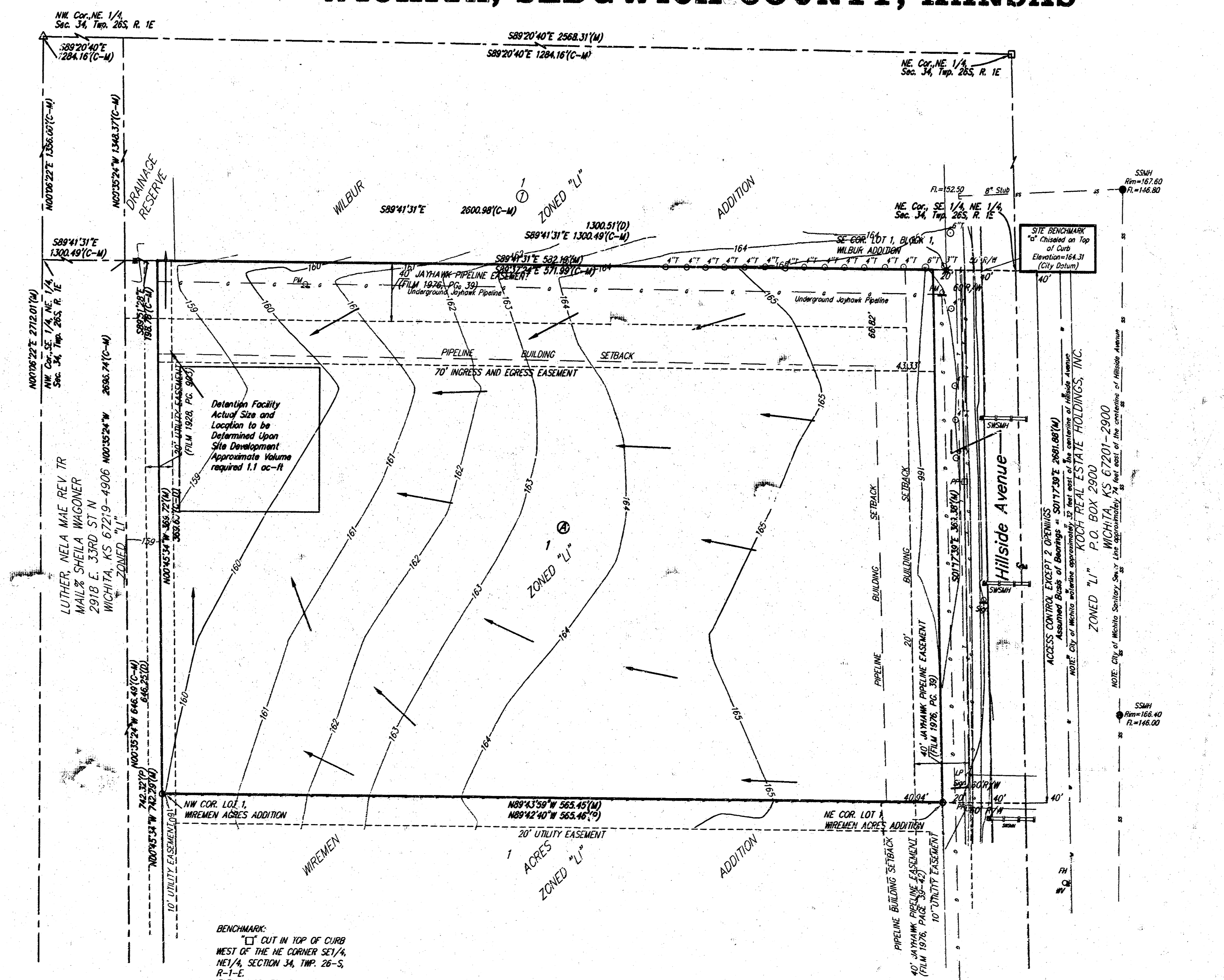


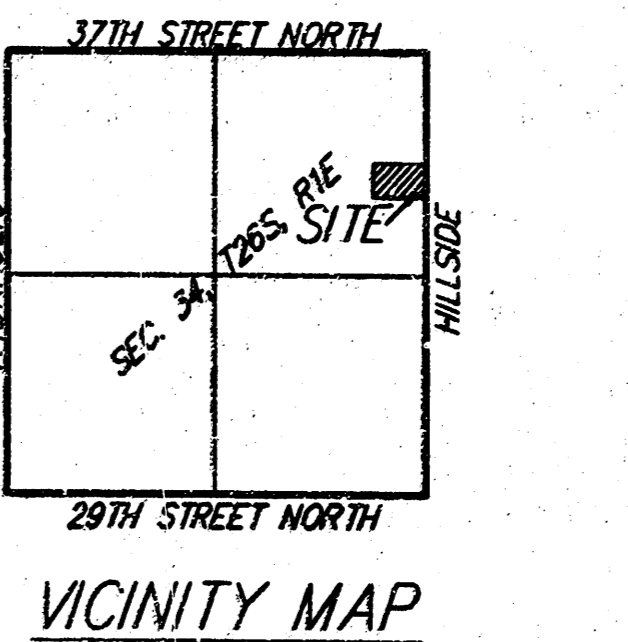
DRAINAGE PLAN

METRO BUILDING SUPPLY ADDITION

WICHITA, SEDGWICK COUNTY, KANSAS



- 0' --- Cur Line
- 1' --- Ditch Line
- 2' --- Secondary Sewer Line
- 3' --- Stormwater Sewer Line
- 4' --- Impoundment Line
- 5' --- Water Line
- 6' --- Fence Line



BENCHMARK:
 "C" CUT IN TOP OF CURB
 WEST OF THE NE CORNER SE 1/4,
 NE 1/4, SECTION 34, TWP. 28-S,
 R-1-E.
 ELEV. = 164.31 NGVD29

NOTE:
 A drainage plan has been
 developed for this subdivision and
 is on file with the City of Wichita,
 Kansas. Drainage intent shall
 remain as depicted or as modified
 with the approval of the City
 Engineer of the City of Wichita,
 Kansas. No obstructions which
 impede the flow of this drainage
 plan shall be allowed.

14 JUNE 2004

Baughman Company, P.A.
 315 Ellis St. Wichita, KS 67211 F 316-262-7271 F 316-262-0149

Baughman ENGINEERING | SURVEYING | PLANNING | LANDSCAPE ARCHITECTURE

P:\HYDRO\METROBUILDINGSUPPLYADDITION.DWG\METROBUILDINGSUPPLYADDITION.DWG