

DRAINAGE PLAN

MID CONTINENT AIRPORT 2ND ADDITION

TO WICHITA, SEDGWICK COUNTY, KANSAS

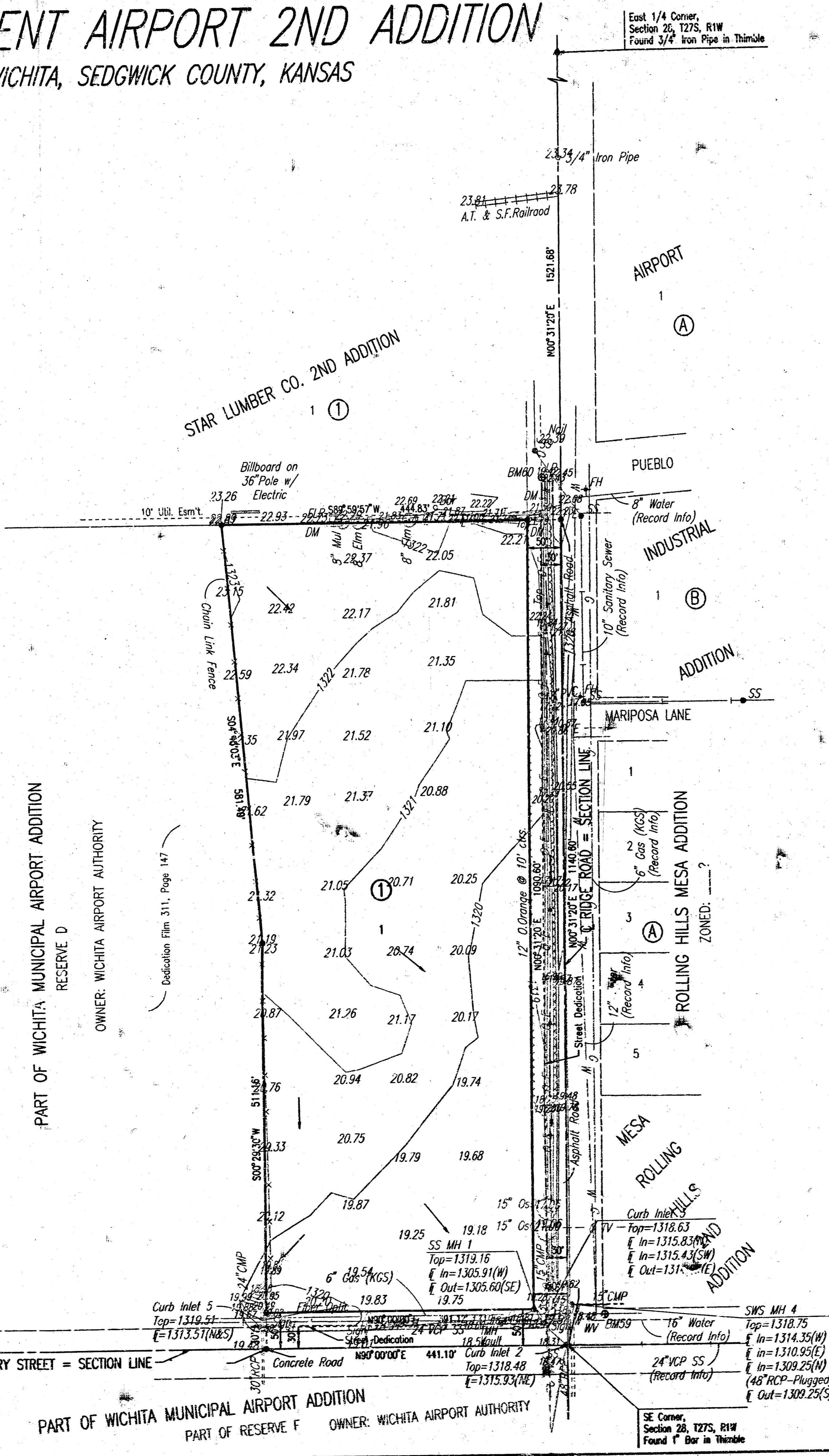
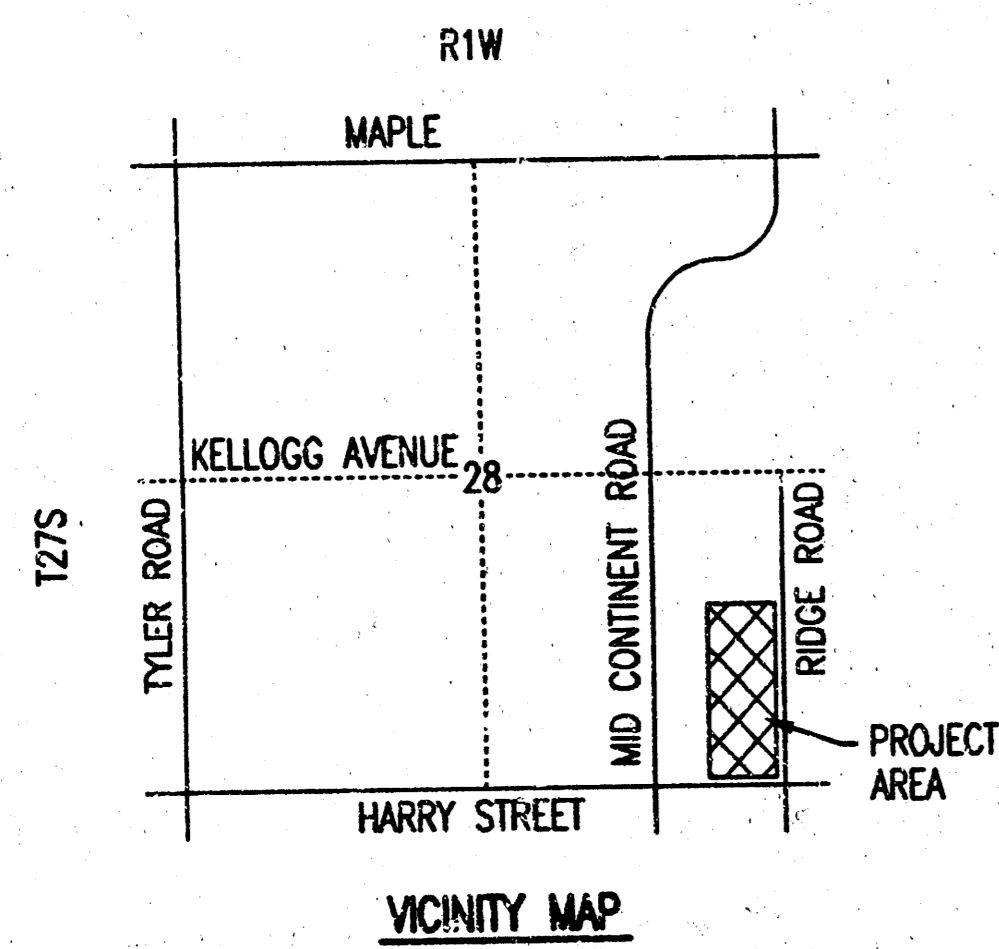


SCALE: 1" = 100'

• = 3/4" IRON PIPE W/PEC CAP UNLESS OTHERWISE NOTED

B.M. 59: City Disk 32" East and 43" North of centerlines of Harry Street and Ridge Road, 22' Northeast of Light Pole.
Elev. = 1319.26 N.G.V.D.

B.M. 60: Railroad Spike in Southeast Face Light Pole at Southwest corner Pueblo and Ridge Road.
Elev. = 1322.42 N.G.V.D.



LEGEND

— STORM WATER FLOW

DRAINAGE FROM LOT 1, BLOCK 1 SHALL BE DIRECTED TO THE STORM SEWER IN THE SOUTHEAST CORNER OR THE SOUTHWEST CORNER OF THIS PLAT. STORM WATER CAN BE DIRECTED BY DRIVES, FLUMES, DITCHES, PARKING LOTS, STORM SEWER OR OTHER APPROVED DRAINAGE DEVICES.
SEE SUPPORTING CALCULATIONS FOR HYDROLOGY.

CSWS: SLD OPER: SLD SCALE: 1"=100.00
 C:\1999\99042\Airport Plats\Drain\DRAINAGE_2ND 06-02-2000 04:18:36 pm