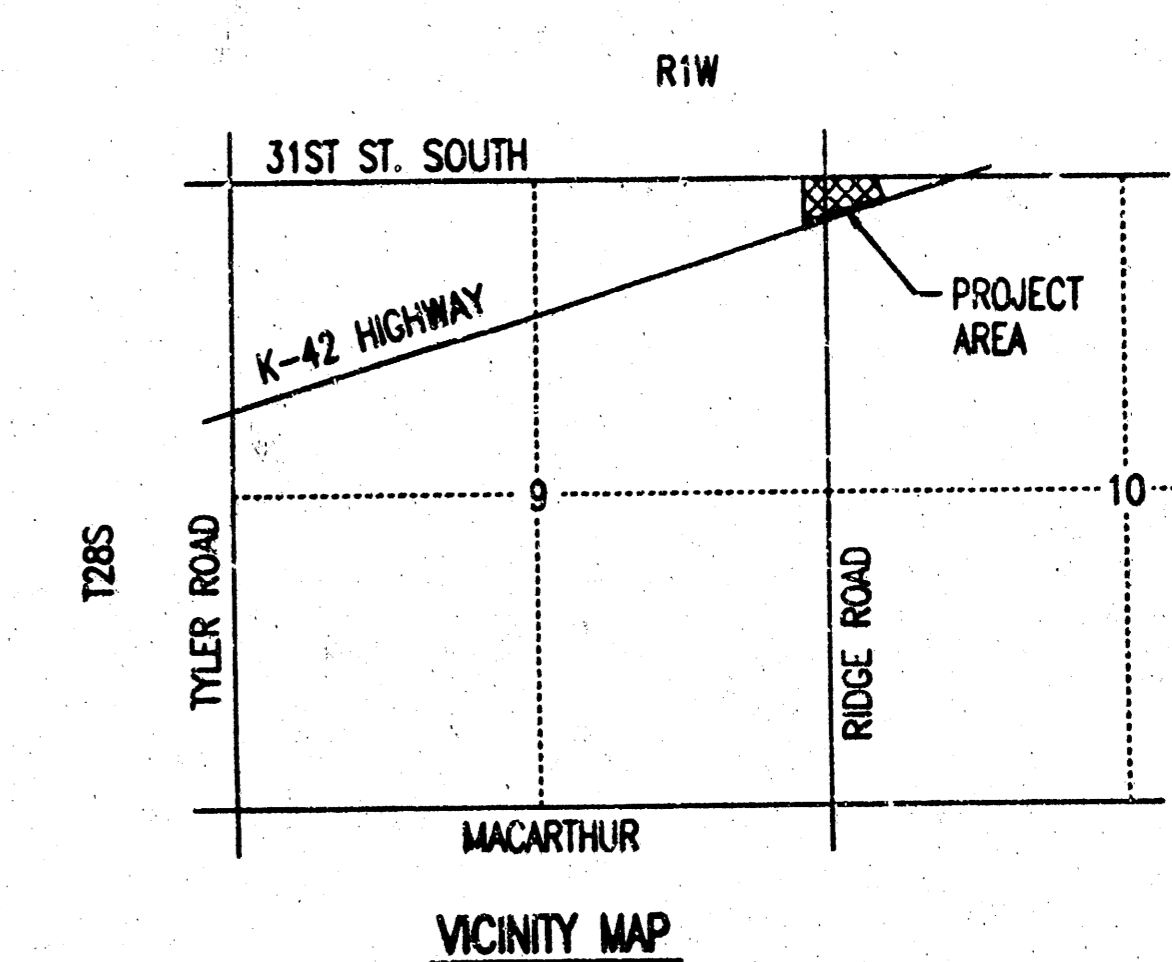
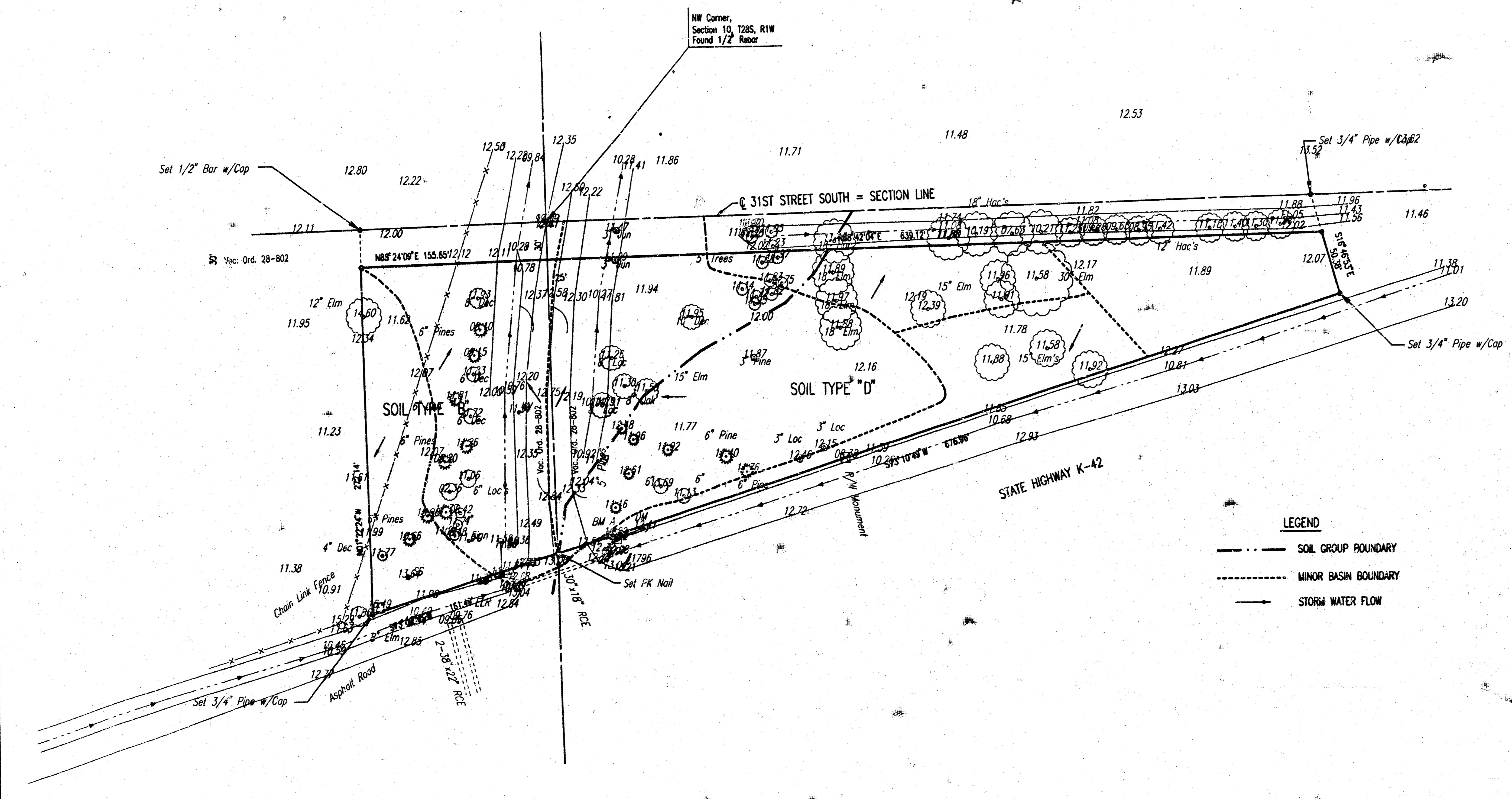


DRAINAGE PLAN  
**MID CONTINENT AIRPORT 4TH ADDITION**  
 TO WICHITA, SEDGWICK COUNTY, KANSAS

SCALE: 1" = 50'

● = 3/4" IRON PIPE W/PEC CAP UNLESS OTHERWISE NOTED  
 B.M. A: Brass Cap in Concrete on East side Ridge Road, North side of K-42 Highway.  
 Elev. = 1311.81



- LEGEND**
- SOIL GROUP BOUNDARY
  - MINOR BASIN BOUNDARY
  - STORM WATER FLOW

DRAINAGE FROM MID CONTINENT 4TH ADDITION SHALL BE ROUTED TO THE NEAREST DRAINAGE DITCH BY DRIVES, PARKING LOTS, DITCHES, FLUMES, STORM SEWER SYSTEMS OR OTHER APPROVED DRAINAGE DEVICES. SEE SUPPORTING CALCULATIONS FOR HYDROLOGY.

DENS: WEB OPER: SUD SCALE: 1"=50.00  
 C:\1899\99042\Airport Plots\Drawg\Drainage\_4th 06-02-2000 01:10:26 pm