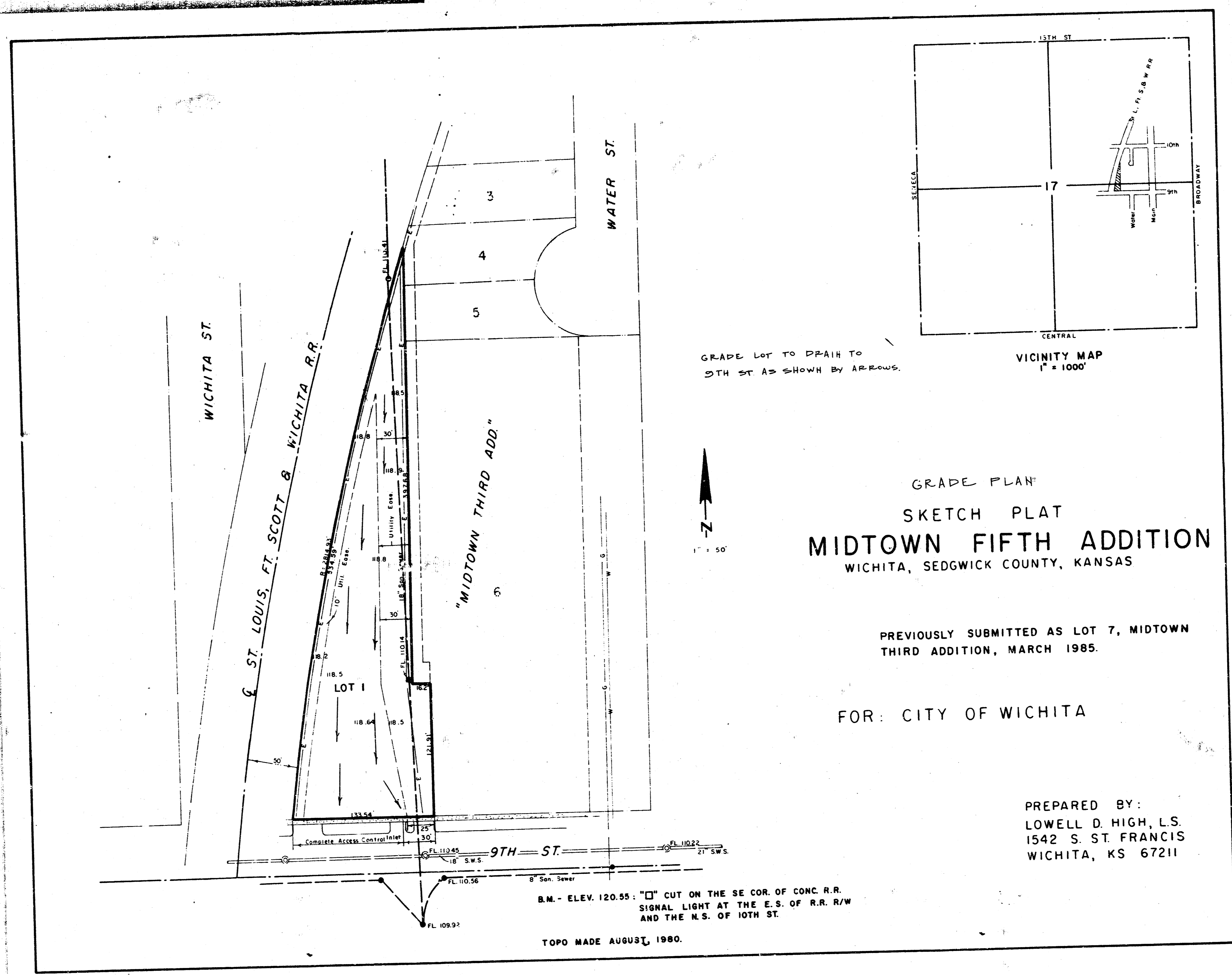
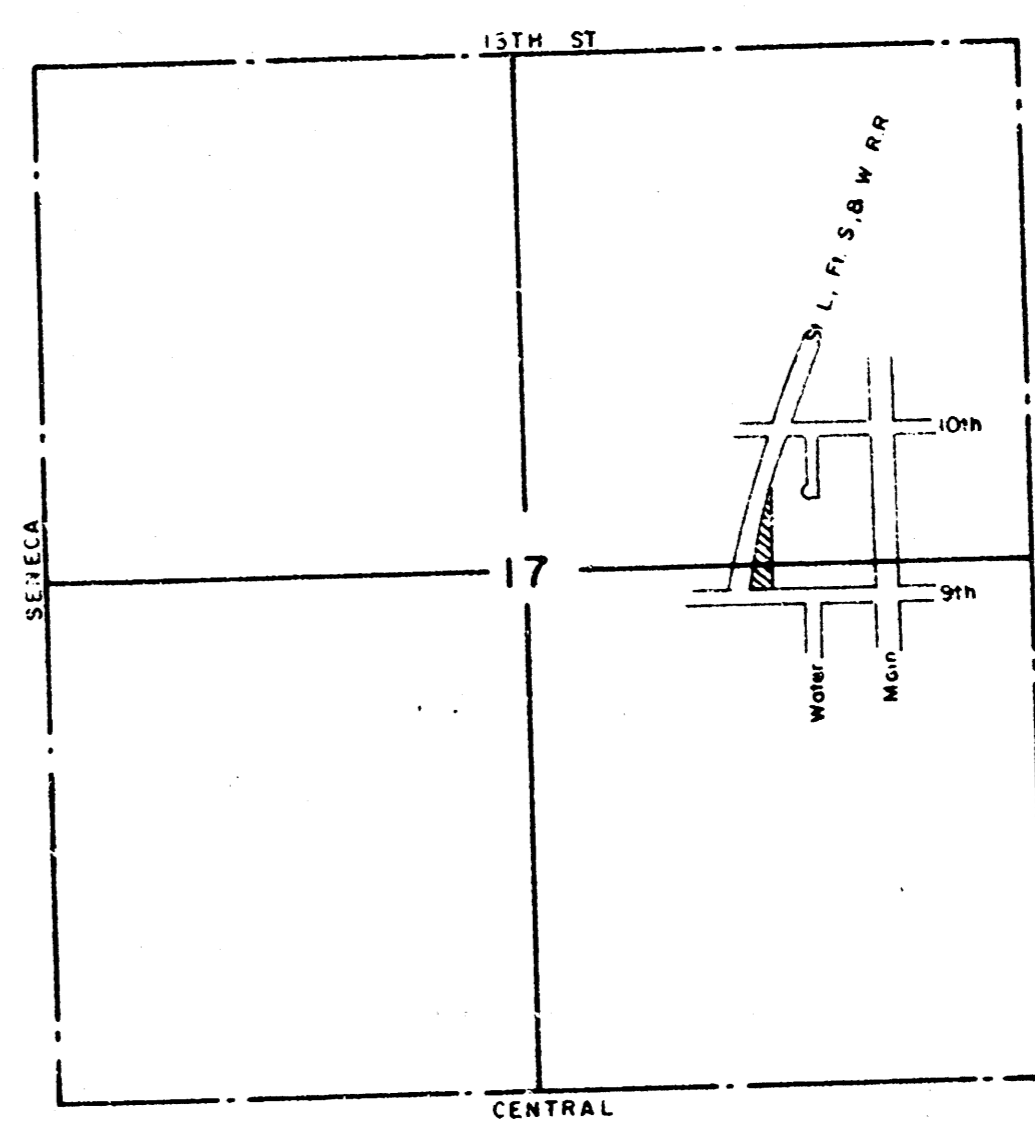


Midtown 5th Add.
Drainage



GRADE LOT TO PFAH TO
5TH ST AS SHOWN BY ARROWS.



CENTRAL
VICINITY MAP
1" = 1000'

GRADE PLAN
SKETCH PLAT
MIDTOWN FIFTH ADDITION
WICHITA, SEDGWICK COUNTY, KANSAS

PREVIOUSLY SUBMITTED AS LOT 7, MIDTOWN
THIRD ADDITION, MARCH 1985.

FOR: CITY OF WICHITA

PREPARED BY:
LOWELL D. HIGH, L.S.
1542 S. ST. FRANCIS
WICHITA, KS 67211

B.M. - ELEV. 120.55: "□" CUT ON THE SE COR. OF CONC. R.R.
SIGNAL LIGHT AT THE E.S. OF R.R. R/W
AND THE N.S. OF 10TH ST.
TOPO MADE AUGUST, 1980.