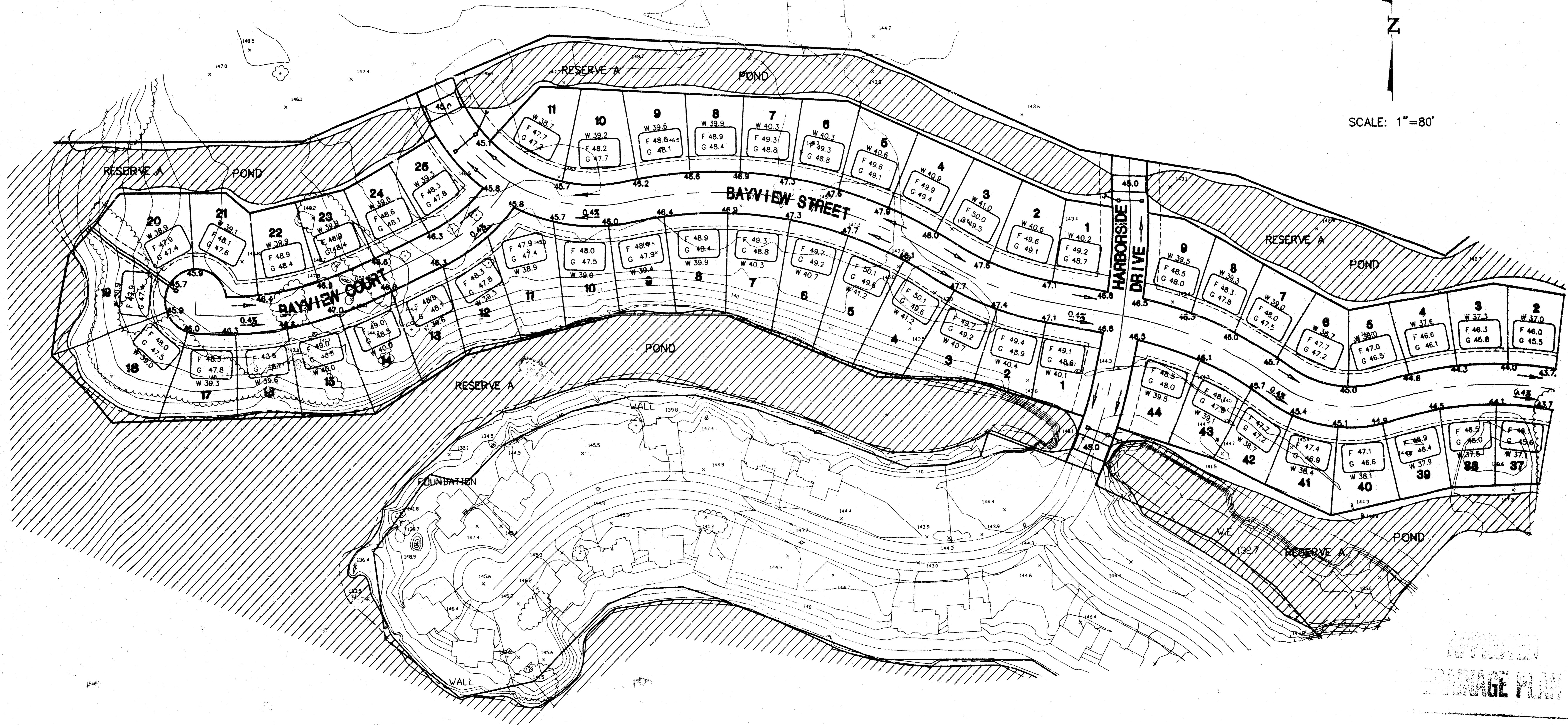




SCALE: 1"=80'

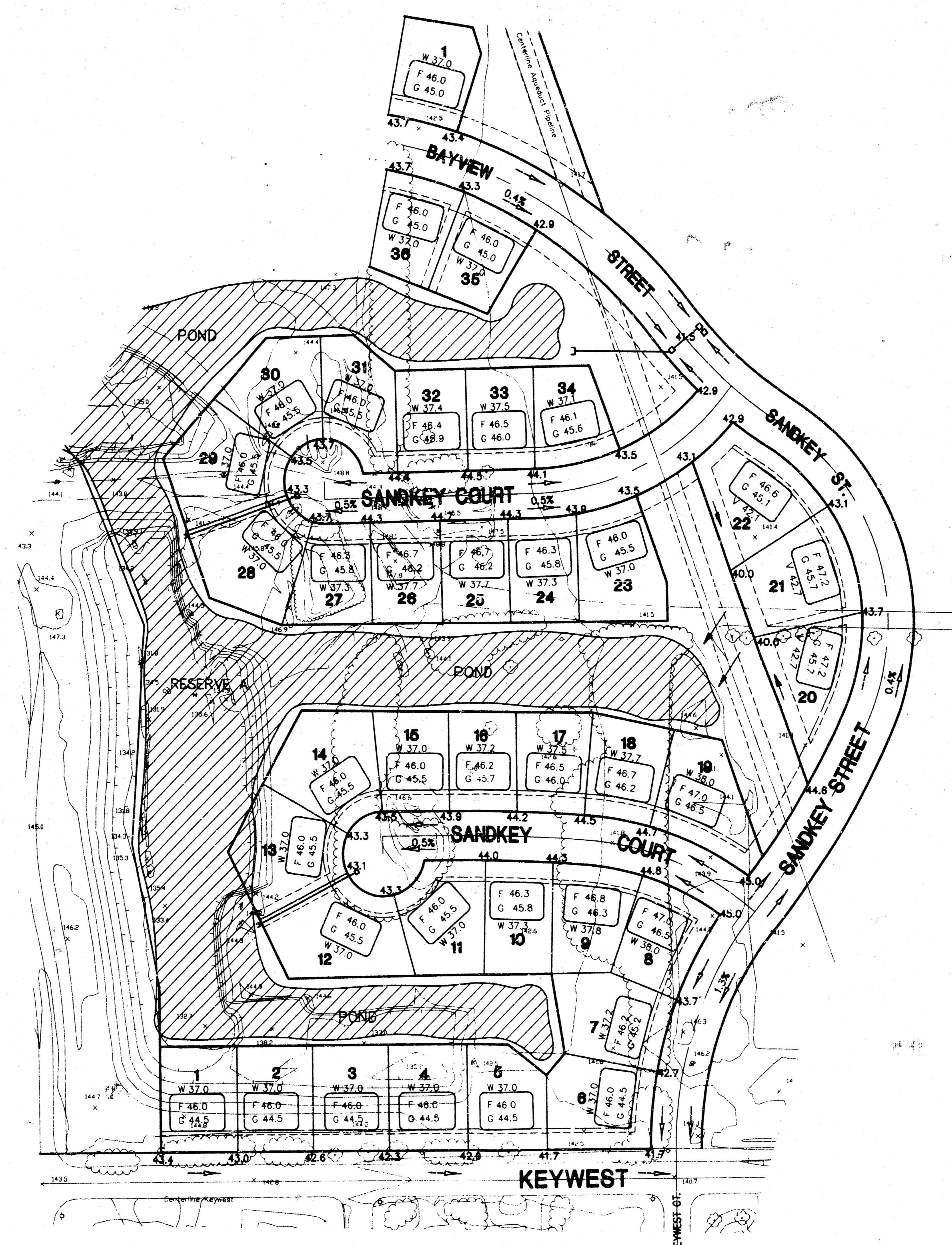


LOT GRADING PLAN
THE MOORINGS NORTH
TO CITY OF WICHITA, SEDGWICK COUNTY, KANSAS

DATE: NOVEMBER 6, 1997

APPROVED
ENGINEERING PLAN

11-6-97



N

SCALE: 1"=80'

LEGEND:

F 45.6 - DELINEATES PROPOSED TOP OF FOUNDATION ELEVATION
 G 45.6 - DELINEATES PROPOSED GARAGE FLOOR ELEVATION
 W 45.6 - DELINEATES PROPOSED BASEMENT FLOOR ELEVATION

— IF "V" DELINEATES PROPOSED TOP OF REAR WALL ELEVATION FOR VIEW OUT BASEMENTS

45.0 - DELINEATES PROPOSED FINISHED GRADE.

NOTES:

1. MINIMUM SLOPE OF REAR YARDS FROM THE HOUSE TO THE POND IS 2%.
2. TOP OF FOUNDATION MAY VARY FROM 30" TO 54" ABOVE TOP OF CURB.
3. WALKOUT BASEMENTS AS SHOWN ARE 9.0 FEET BELOW TOP OF FOUNDATION BUT BASEMENT DEPTH MAY VARY FROM 8 FEET TO 10 FEET.
4. FRONT LOT CORNERS ARE 0.5 FEET ABOVE TOP OF CURB ELEVATIONS.
5. MINIMUM LOW OPENING ELEVATION FOR HOMES BUILT IN THIS ADDITION IS 137.0 C.O.W. DATUM, 1324.4 MSL DATUM.
6. THE MINIMUM HEIGHT FROM TOP OF CURB TO GARAGE FLOOR IS 24". GARAGE FLOOR ELEVATION MAY VARY FROM 24" TO 42" ABOVE TOP OF CURB.

BENCHMARK: SQUARE CUT ON SOUTH HEADWALL RCB AT 45TH ST. NORTH AND MERIDIAN AVENUE. ELEVATION 141.07, COW DATUM

LOT GRADING PLAN
THE MOORINGS NORTH
TO CITY OF WICHITA, SEDGWICK COUNTY, KANSAS

DATE: NOVEMBER 6, 1997

11-6-97