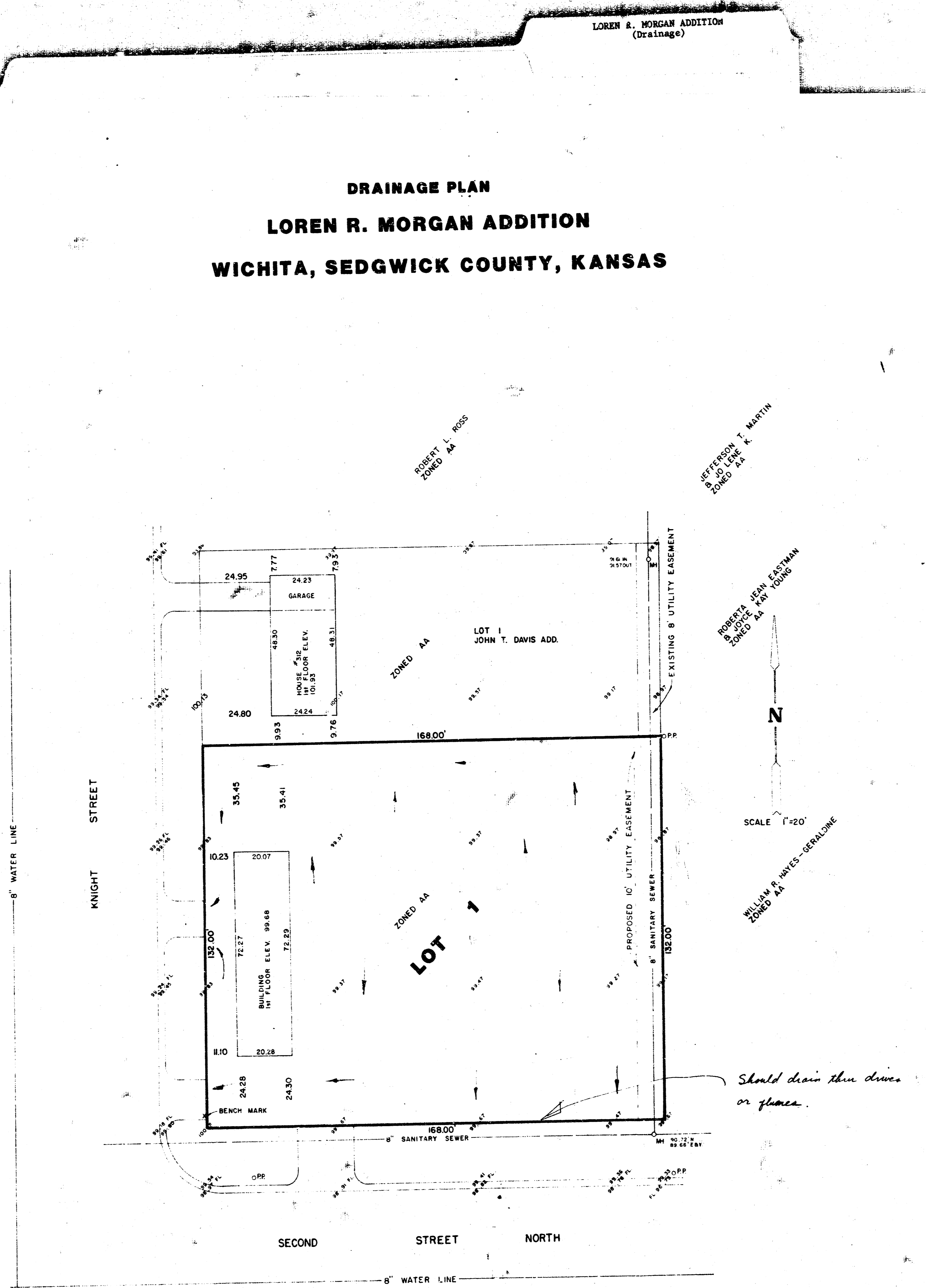


DRAINAGE PLAN
LOREN R. MORGAN ADDITION
WICHITA, SEDGWICK COUNTY, KANSAS



TOPOGRAPHIC SURVEY - 5-11-84
 BENCH MARK: BACK OF SIDEWALK
 AT SOUTH EDGE OF DRIVEWAY,
 FIRST DRIVE NORTH OF 2nd ST.
 ON EAST SIDE OF KNIGHT ST.
 ELEV. 100.00'
 ELEV. 100.00' = 117.90' CITY DATUM

MAY 24, 1984
 OWNER:
 LOREN R. MORGAN
 3008 BENJAMIN
 WICHITA, KS 67203

Air Capitol Land Surveyors
 210 W 7th STREET
 WICHITA, KANSAS 67203 (316) 638-7071