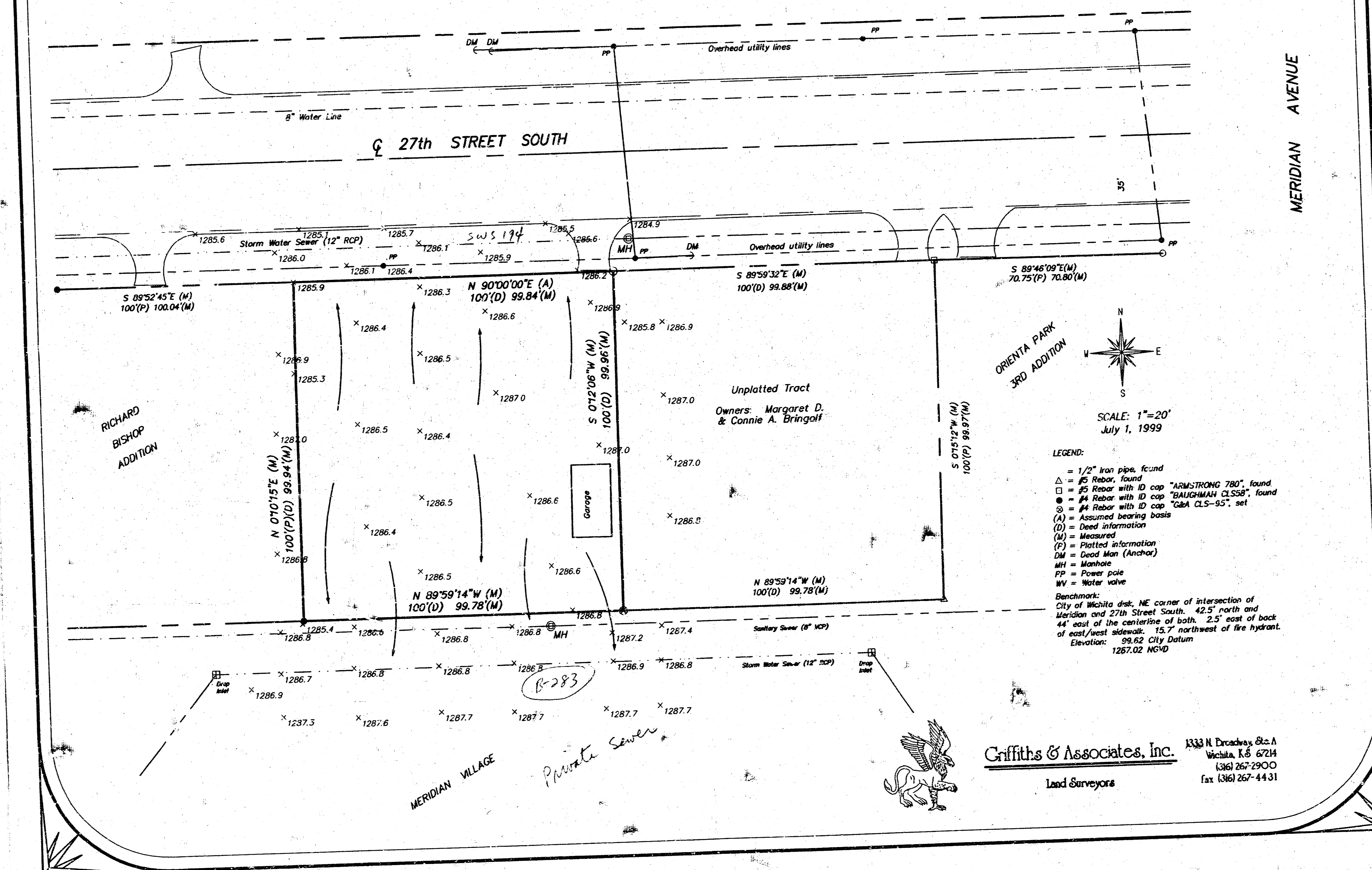


Drainage Concept for MOUNIVONG ADDITION

Wichita, Sedgwick County, Kansas



N
E
S
W

SCALE: 1"=20'
July 1, 1999

LEGEND:

- = 1/2" Iron pipe, found
- △ = #5 Rebar, found
- = #5 Rebar with ID cap "ALUMSTRONG 780", found
- = #4 Rebar with ID cap "BALGHMAN CLS58", found
- ⊙ = #4 Rebar with ID cap "GMA CLS-55", set
- (A) = Assumed bearing basis
- (D) = Deed information
- (M) = Measured
- (P) = Plotted information
- DM = Good Man (Anchor)
- MH = Manhole
- PP = Power pole
- WV = Water valve

Benchmark:
City of Wichita dist. NE corner of intersection of
Meridian and 27th Street South. 42.5' north and
44' east of the centerline of both. 2.5' east of back
of east/west sidewalk. 15.7' northwest of fire hydrant.
Elevation: 99.62 City Datum
1287.02 NGVD

Griffiths & Associates, Inc.
Lead Surveyors

1333 N Broadway, Ste. A
Wichita, KS 67214
(316) 267-2900
fax (316) 267-4431



B-283
Private Sewer