

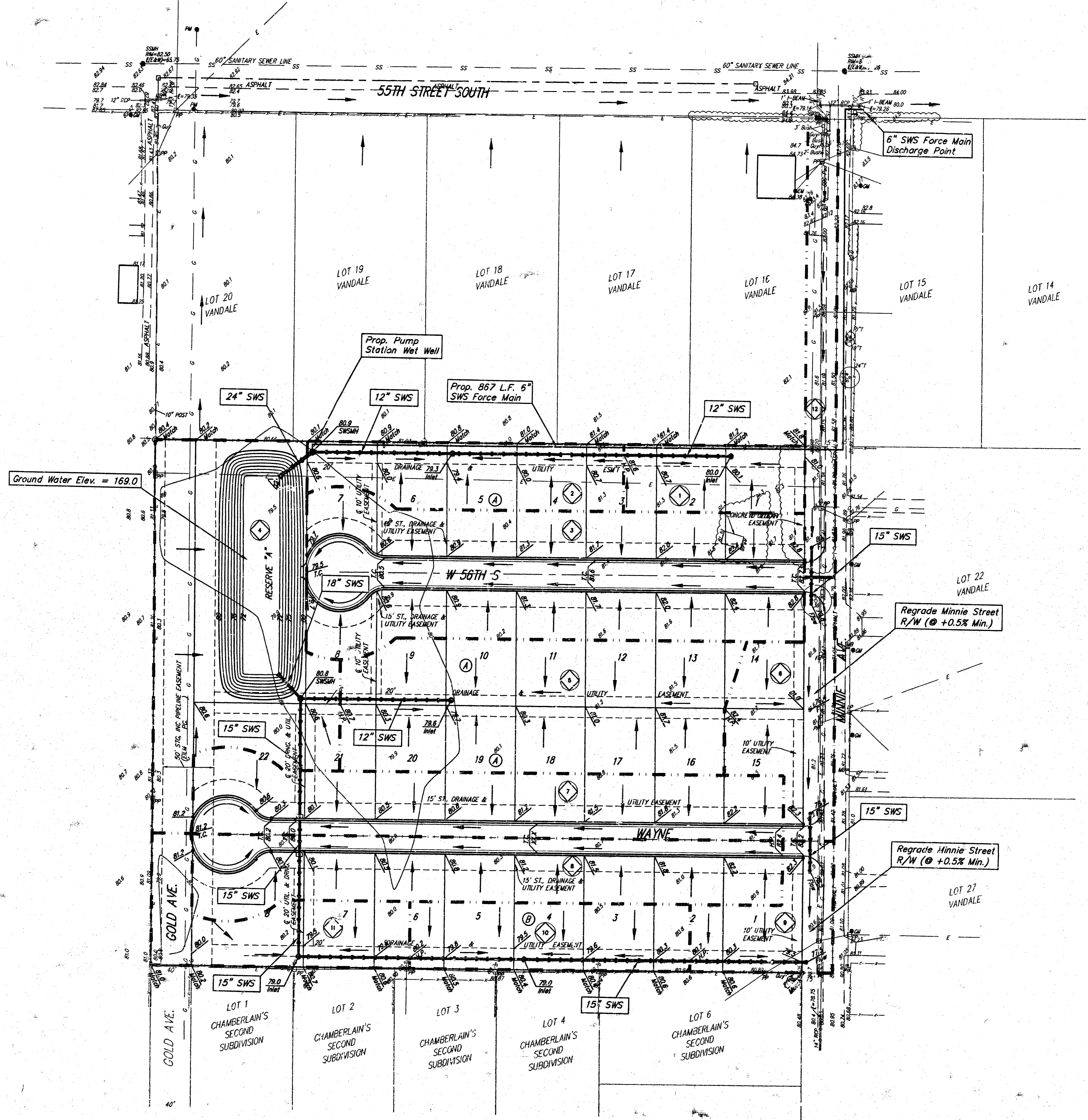
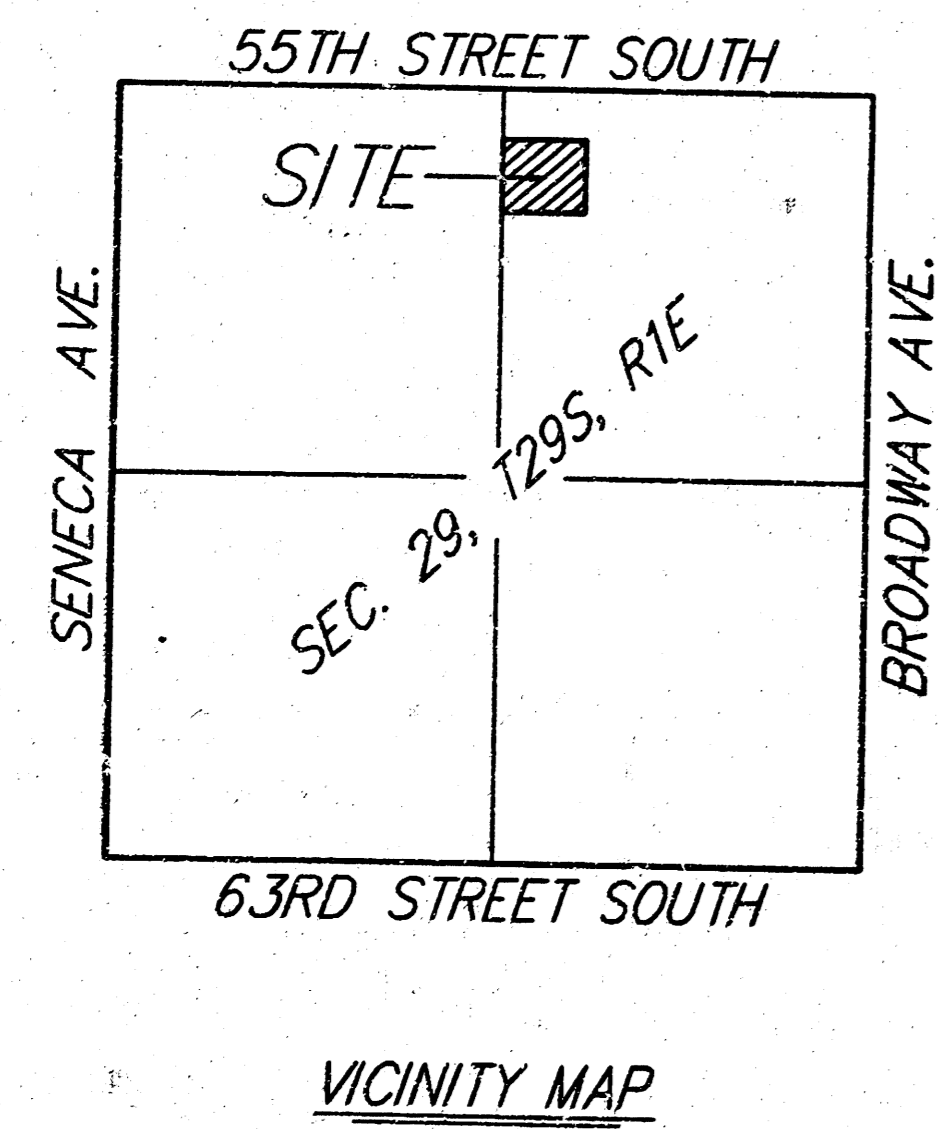
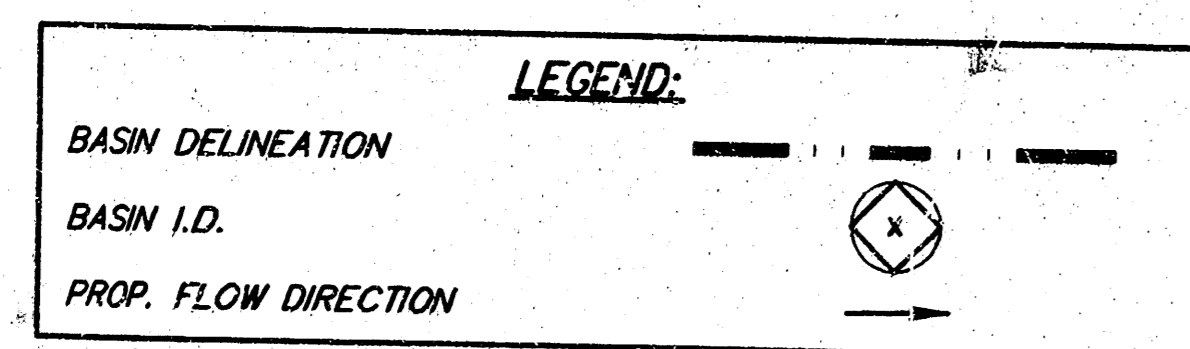
# DRAINAGE PLAN MY HOUSE ADDITION WICHITA, SEDGWICK COUNTY, KANSAS

**Dry Detention Storage Volume Requirement**

Elev. (city)	Area (ac.)	Vol. (ac-ft)	Sum. (ac-ft)
71	0.00		
72	0.15	0.08	0.08
73	0.18	0.17	0.24
74	0.22	0.20	0.44
75	0.25	0.24	0.68
76	0.29	0.27	0.94
77	0.32	0.30	1.24
78	0.35	0.34	1.58
79	0.40	0.38	1.95
80	0.66	0.53	2.48

**My House Addition - Rational Method -  $C = 0.4$  -  $t_c = 15$  min.**

Basin	Area	$C_1$	$C_2$	$C_3$	$Q_1$ (cfs)	$Q_2$ (cfs)	$Q_{1+2}$ (cfs)
1	0.28	0.44	0.46	0.81	0.4	0.5	1.2
2	0.42	0.44	0.46	0.81	0.7	0.9	1.9
3	1.43	0.44	0.46	0.81	2.4	3.0	6.4
4	1.18	0.44	0.46	0.81	2.0	2.5	5.3
5	1.08	0.44	0.46	0.81	1.8	2.3	4.9
6	0.41	0.44	0.46	0.81	0.7	0.9	1.8
7	0.84	0.44	0.46	0.81	1.4	1.8	3.8
8	0.84	0.44	0.46	0.81	1.4	1.8	3.8
9	0.27	0.44	0.46	0.81	0.5	0.6	1.2
10	0.39	0.44	0.46	0.81	0.7	0.9	1.8
11	0.39	0.44	0.46	0.81	0.7	0.9	1.8
0	0.29	0.44	0.46	0.81	0.5	0.6	1.3
TOTAL	7.80				19.1	16.4	35.1



- 0 50 100
- DATE OF PREPARATION: 29 SEPTEMBER 2003  
DATE OF TOPOGRAPHY: 22 SEPTEMBER 2003  
CONTOUR INTERVAL: 1 FOOT
- EM = Electric Meter
  - FM = Fire Hydrant
  - GM = Gas Meter
  - GA = Gas Anchor
  - LP = Light Pole
  - MB = Manhole
  - PM = Pipe Marker
  - PP = Power Pole
  - SSM = Sanitary Sewer Manhole
  - SBC = SBC Pedestal
  - Sign = Sign

- # = #4 REBAR W/ "BALLOON" CAP (FOUND)
- # = #4 REBAR W/ "BALLOON" CAP (SET)
- # = #4 REBAR (FOUND)
- # = 1" IRON PIPE (FOUND)
- # = 1/2" PINCHED IRON (FOUND)
- # = 3/4" IRON PIPE (FOUND)
- # = BOLT (FOUND)
- # = RAILROAD SPIKE (FOUND)
- # = # REBAR (FOUND)

**CONTRACT PURCHASER:**  
Lee Harp  
10300 W. Central  
Wichita, Kansas 67212  
316-461-5657

**LEGAL DESCRIPTION:**  
A replat of all of Lot 21, Vandale, Sedgwick County, Kansas, together with Lot 28 in said Vandale, EXCEPT that part platted as Chamberlain's Second Subdivision in Vandale, Sedgwick County, Kansas.

**BENCHMARK:**  
City of Wichita Benchmark  
NW corner of intersection of 55th St. S. and Broadway.

City Datum = 84.47  
N.G.V.D.29 = 1271.87

