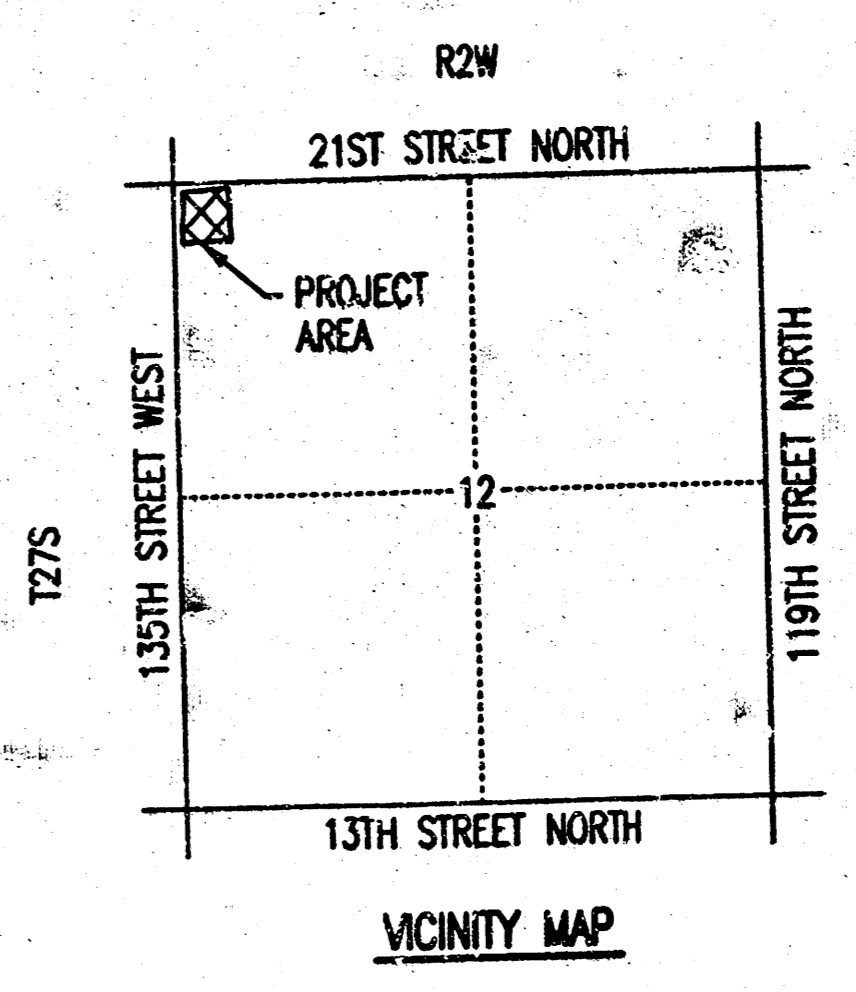


# DRAINAGE PLAN NW MAIN PUMP STATION TO WICHITA, SEDGWICK COUNTY, KANSAS

B.M. - CITY OF WICHITA BRASS DISC AT THE SOUTHWEST CORNER OF 135TH STREET WEST AND 21ST STREET NORTH. ELEV. = 1356.59 N.G.V.D.

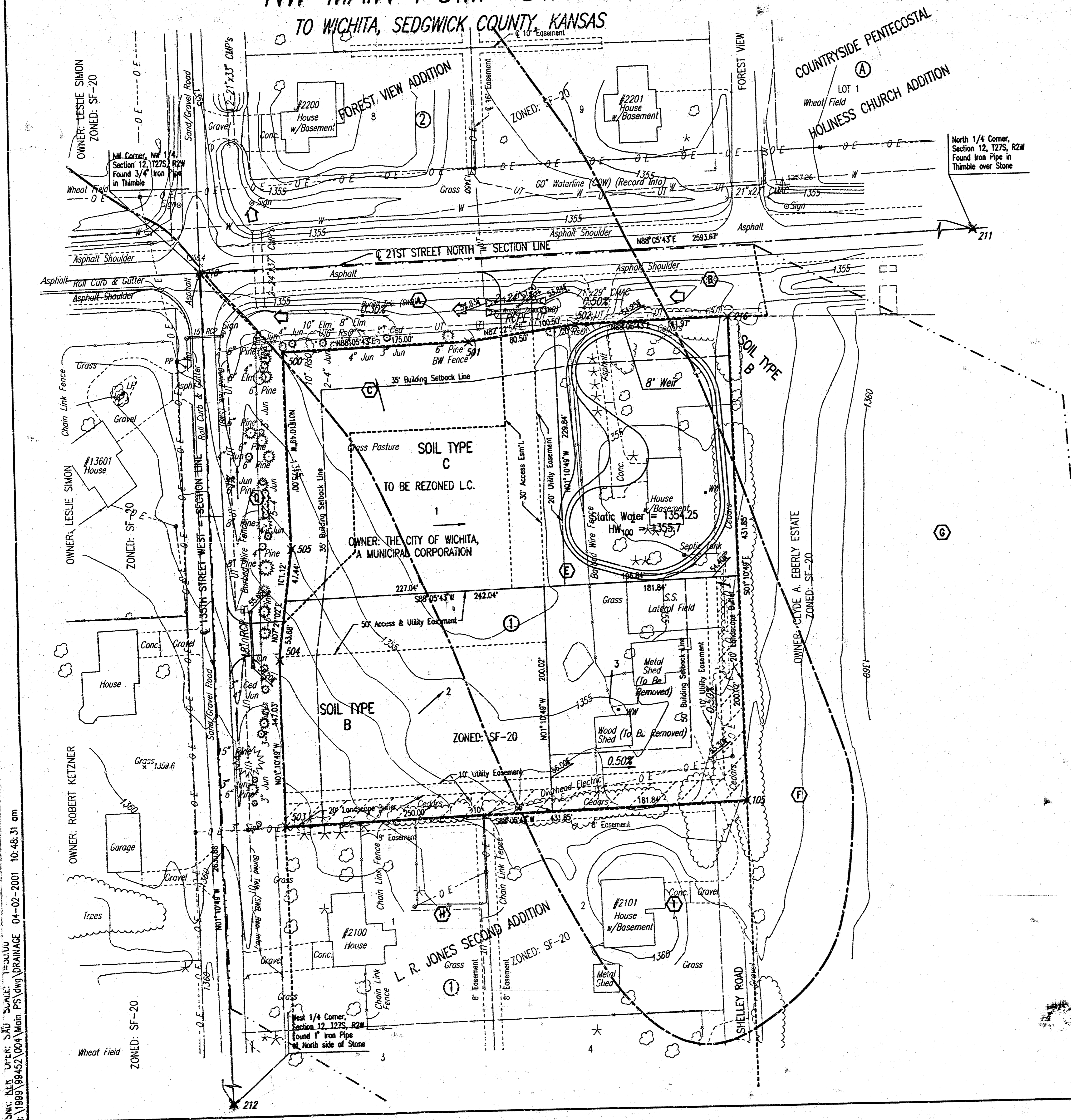


SCALE: 1" = 50'

○ = 3/4" IRON PIPE W/PEC CAP UNLESS OTHERWISE NOTED

- LEGEND**
- SOIL GROUP BOUNDARY
  - ⊙ BASIN IDENTIFIER
  - - - - MINOR BASIN BOUNDARY
  - MAJOR BASIN BOUNDARY
  - ⊠ MAJOR STORM WATER OVERFLOW (Q100)
  - ⊡ MINOR STORM WATER FLOW (Q2)
  - ⊗ SPOT ELEVATION
  - ⊘ FLOWLINE ELEVATION

SEE SUPPORTING CALCULATIONS FOR HYDROLOGY



USER: NLS, USER: SQU, DATE: 04-02-2001 10:48:31 am  
 Q:\1999\99452\004\Main PS\dwg\DRAINAGE