

AREA MAP OF
NEITZEL ADDITION
 TO WICHITA, SEDWICK COUNTY, KANSAS

OWNER/DEVELOPER: FLOYD NEITZEL
 11204 E. LEWIS
 WICHITA, KANSAS 67207

ENGINEER: PROFESSIONAL ENGINEERING CONSULTANTS, P.A.
 303 S. TOPEKA
 WICHITA, KANSAS 67202

Basin	Area(ac)	Cs	C ₁₀₀	Ls	L ₁₀₀	Qs	Q ₁₀₀
1A	0.14	0.65	0.80	4.61	7.36	0.45	0.82
1B	0.81	0.65	0.80	4.61	7.36	2.58	4.77

Note: C determined assuming "Neighborhood Area Business" for Developed Conditions.

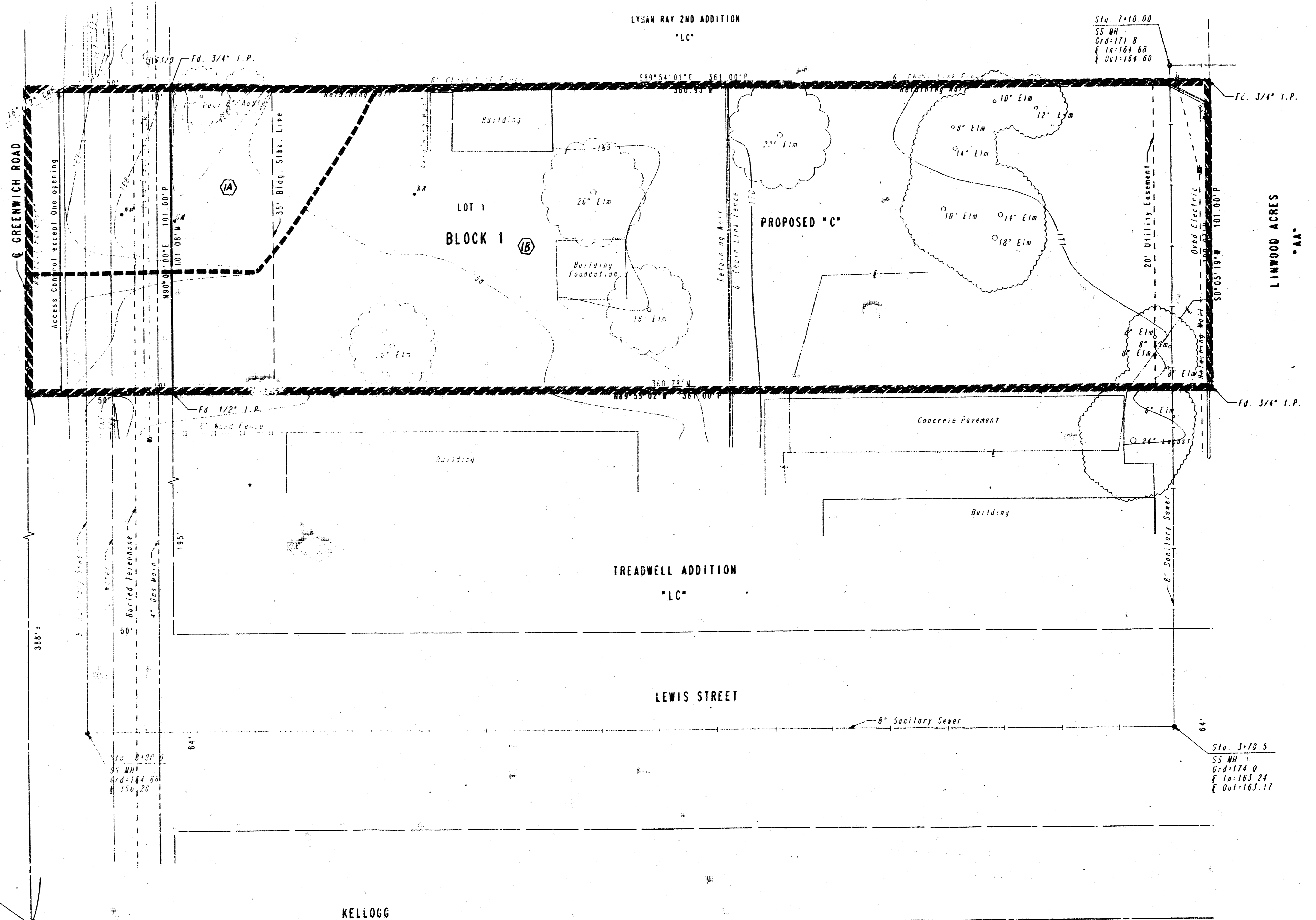
i based on Tc = 15 min.

SCALE: 1"=20'
 • = IRON FOUND
 P=PLATTED
 M=MEASURED
 TOPOGRAPHY: AUGUST, 1994

B.M. - CITY OF WICHITA BENCH MARK DISC, 50 FEET EAST AND 2.5 FEET SOUTH OF THE INTERSECTION OF CENTERLINES OF KELLOGG AND GREENWICH
 ELEV. = 164.168 CITY DATUM

B.M. - CHISELED "O" AT WEST SOUTHWEST END OF RETAINING WALL ON NORTH SIDE OF LOT 21 LINWOOD ADDITION
 ELEV. = 171.243 CITY DATUM

S.W. Corner
 Sec. 22, T27S, R2E
 of the 6th P.M.



AREA MAP OF
NEITZEL ADDITION
 TO WICHITA, SEDWICK COUNTY, KANSAS

OWNER/DEVELOPER: FLOYD NEITZEL
 11204 E. LEWIS
 WICHITA, KANSAS 67207

ENGINEER: PROFESSIONAL ENGINEERING CONSULTANTS, P.A.
 303 S. TOPEKA
 WICHITA, KANSAS 67202

SCALE: 1"=20'

• = IRON FOUND
 P=PLATTED
 M=MEASURED

TOPOGRAPHY: AUGUST, 1994

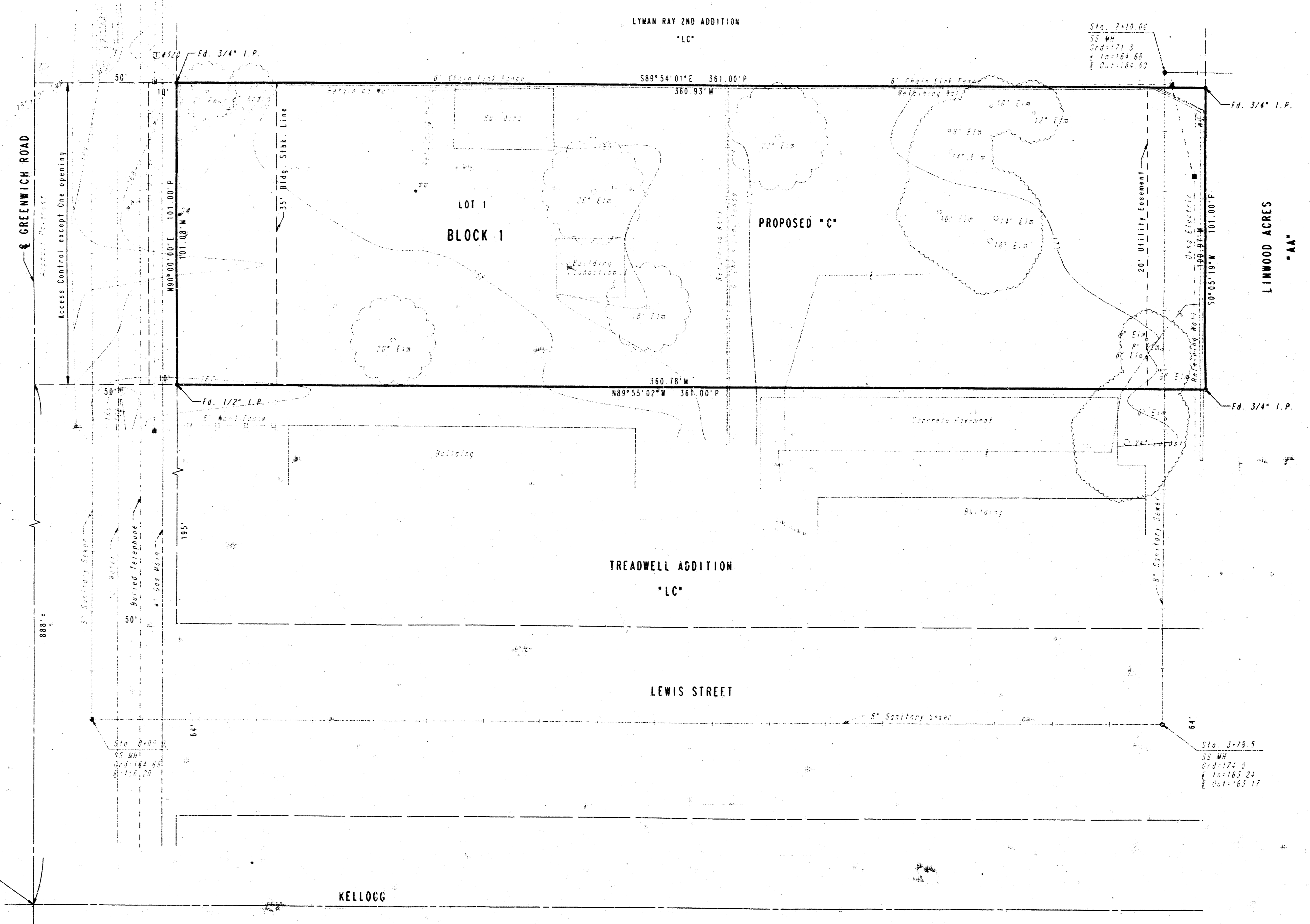
B.M. - CITY OF WICHITA BENCH MARK DISC, 50 FEET EAST AND 2.5 FEET SOUTH OF THE INTERSECTION OF CENTERLINES OF KELLOGG AND GREENWICH ELEV. -164.168 CITY DATUM

B.M. - CHISELED "D" AT WEST SOUTHWEST END OF RETAINING WALL ON NORTH SIDE OF LOT 21 LINWOOD ADDITION ELEV. -171.243 CITY DATUM

DRAINAGE PLAN.

THE LOT SHALL BE GRADED TO DRAIN TO THE PUBLIC STREET VIA DRAVES, FLUMES, PRIVATE STORM SEWERS OR OTHER APPROVED METHODS.

S.W. Corner
 Sec. 22, T27S, R2E
 of the 6th P.M.



Sta. 7+19.66
 SS NH
 C.D.#171.0
 E. 161764.68
 E. 0117281.93

Sta. 3+78.5
 SS NH
 C.D.#172.0
 E. 161763.24
 E. 0117281.17

KELLOGG