

NEW BAUER ADDITION  
(Drainage)



LETTER OF TRANSMITTAL

PROJECT: Newbauer Addition  
Drainage Plan  
PROJECT #: DATE: 06/29/88

TO: Engineering Department  
455 N. Main, 7th Floor  
Wichita, KS 67202  
ATTN: Vicky Huang

MID-KANSAS ENGINEERING  
CONSULTANTS, P.A.  
3500 N. Rock Road, #900  
Wichita, KS 67226

We are sending the following items:  Attached  
Under separate cover via \_\_\_\_\_  
 Prints  Specifications  Legal Descriptions  
 Tracings  Petitions  Correspondence  Other

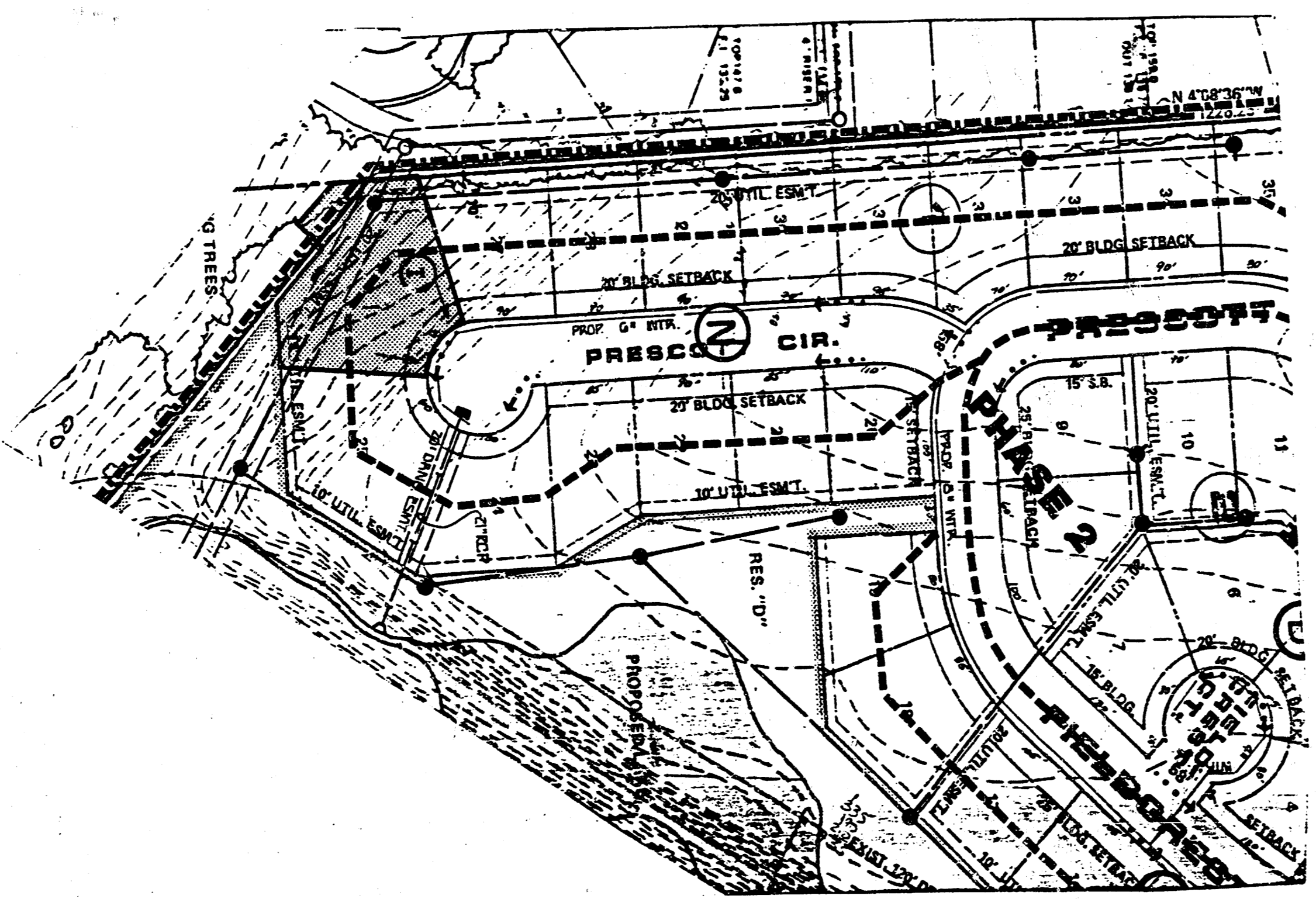
COMMENTS: Submitted herewith is the drainage plan for the referenced project.

For Your Approval  As Requested  
 For Your Use  For Your Files  
 Approved as Not  For Review and Comment

REMARKS:

Signed: *Greg Atkinson*  
Greg Atkinson

GA/sk



MID-KANSAS ENGINEERING CONSULTANTS PA  
3500 N. ROCK ROAD  
WICHITA, KANSAS 67226  
672-2626  
SKETCH PLAN  
& DRAINAGE PLAN  
NEWBAUER ADDITION  
6/29/88