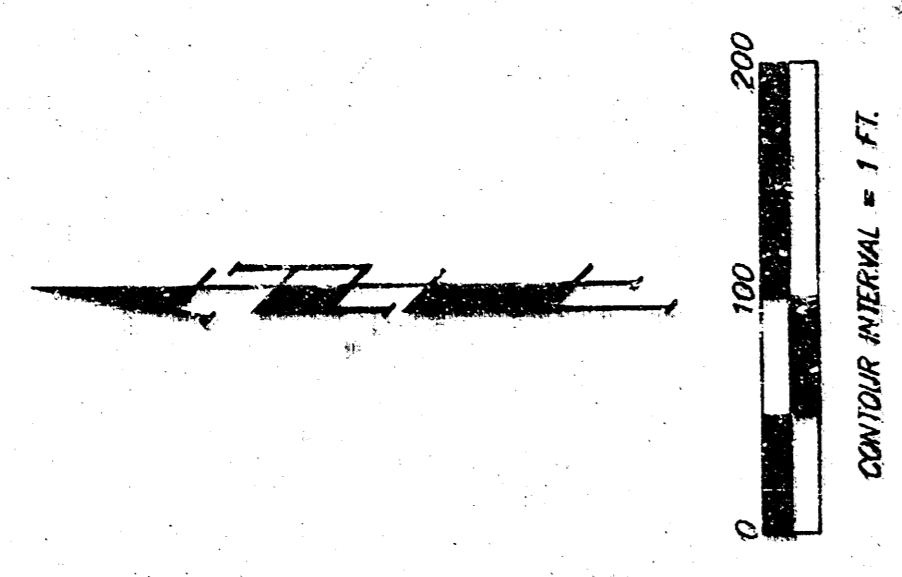
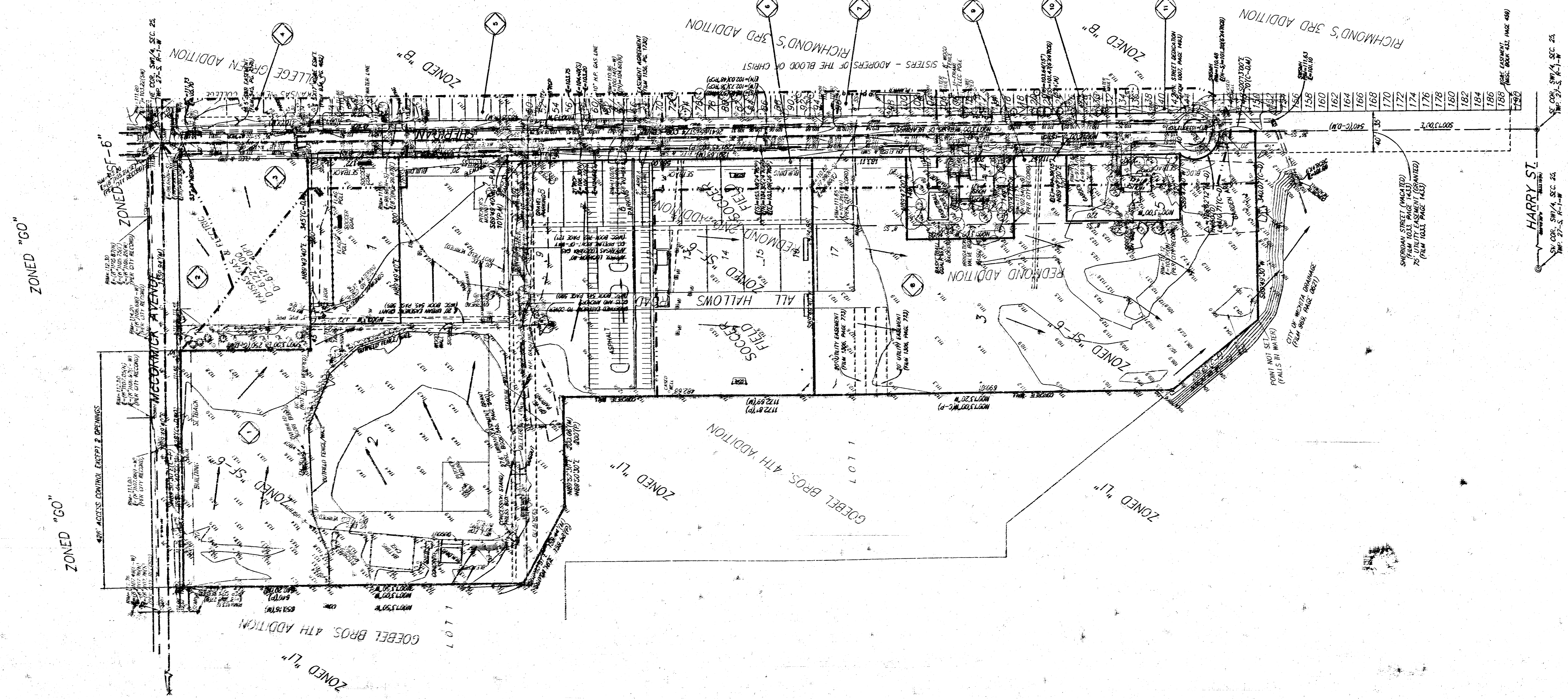


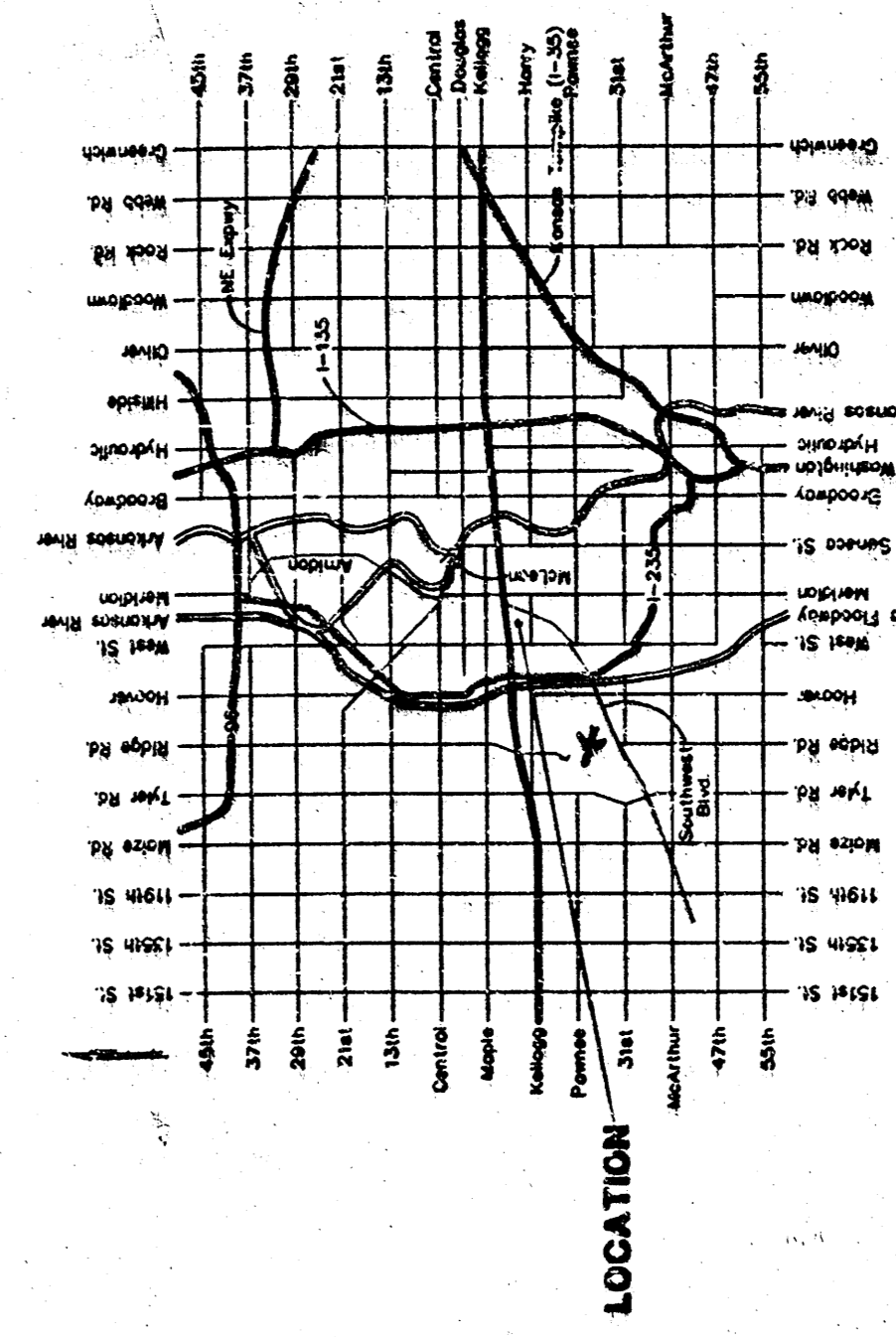
DRAINAGE CONCEPT NEWMAN UNIVERSITY ADDITION WICHEITA, SEDGWICK COUNTY, KANSAS



- (M) = MEASURED
- (C) = CALCULATED
- (C-B) = CALCULATED PER PLATED INFO
- (C-P) = CALCULATED AND PLATED INFO
- = #1 REBAR W/ BAUGHMAN CAP (SET)
- = CONC. NAIL ON MANHOLE LID (FOUND)
- = 2" x 4" IRON (FOUND)
- = CROSS (FOUND)
- = #1 REBAR W/ BAUGHMAN CAP (FOUND)
- = POWER POLE
- = HIGH LINE POLE
- = WATER VALVE BOX
- = REFLECTOR POST
- = ELECTRIC METER
- = POLE W/ ELEC. METER
- = FINE HYDRANT
- = SPRINKLER HEAD
- = WATER SHOOT
- = TREE
- = BUSH
- = CACTUS
- = GUY WIRE
- = GUY REGULATOR
- = SAWHAYT SUNKER MANHOLE
- = 12" BELL PEDESTAL
- = 12" WATER METER
- = GUY ANCHOR
- = UNDERGROUND ELECTRIC BOX
- = UNDERGROUND ELECTRIC BOX
- = SOUTH-WESTERN BELL BOX
- = BENCHMARK DISC

NOTE:
 1. ALL POINTS OF ELECTRICAL SYSTEMS AND SPRINKLER SYSTEMS ARE NOT FIELD LOCATED.

Station	Area (Ac)	Area (Sq Ft)	Flow (CFS)	Velocity (FPS)	Time (Min)
1	0.55	3,800	1.5	2.5	2.5
2	1.0	7,000	3.0	3.0	3.0
3	1.5	10,500	4.5	3.5	3.5
4	2.0	14,000	6.0	4.0	4.0
5	2.5	17,500	7.5	4.5	4.5
6	3.0	21,000	9.0	5.0	5.0
7	3.5	24,500	10.5	5.5	5.5
8	4.0	28,000	12.0	6.0	6.0
9	4.5	31,500	13.5	6.5	6.5
10	5.0	35,000	15.0	7.0	7.0
11	5.5	38,500	16.5	7.5	7.5



VICINITY MAP