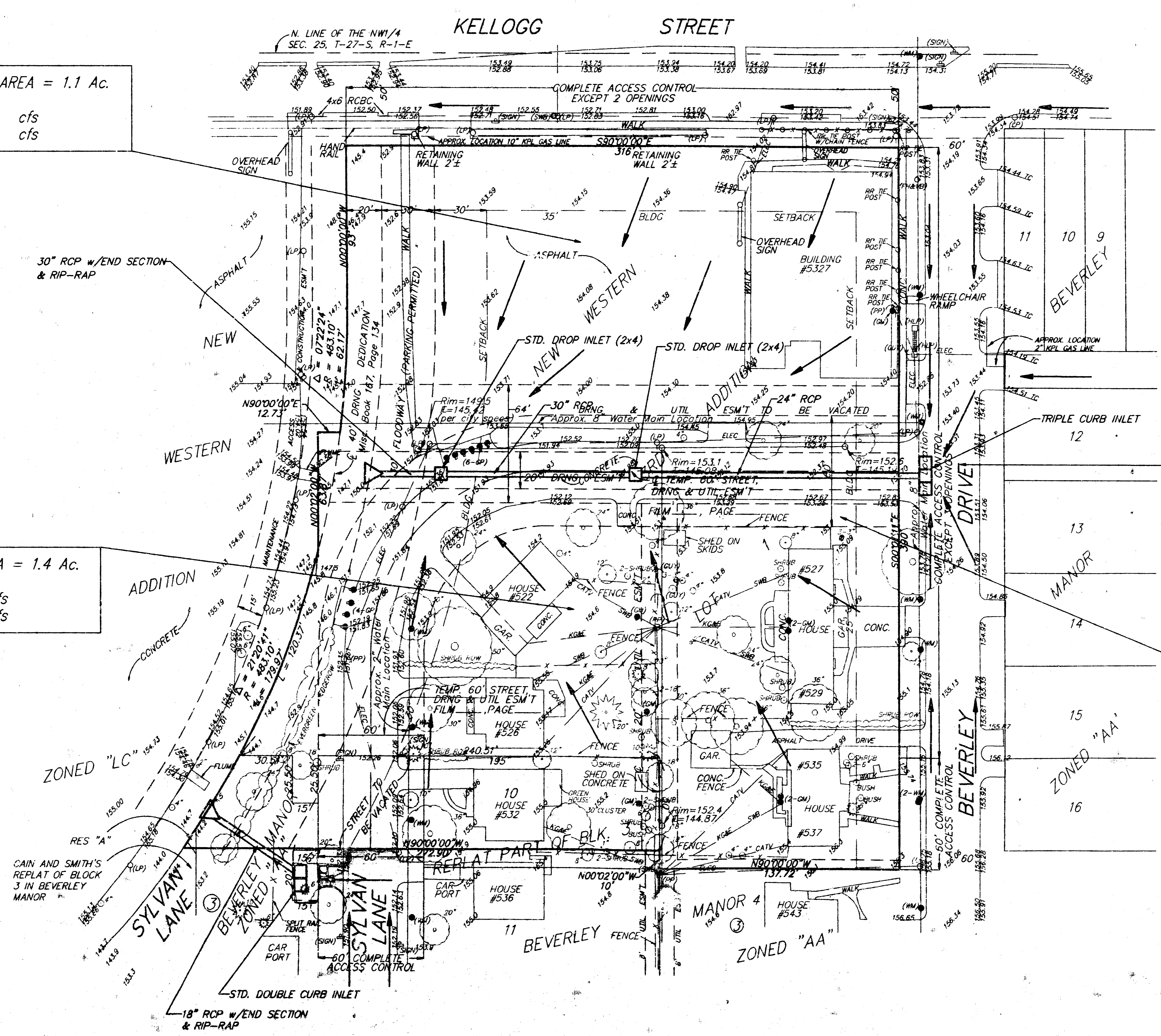


DRAINAGE PLAN NEW WESTERN 4TH ADDITION WICHITA, SEDGWICK COUNTY, KANSAS

DRAINAGE AREA = 1.1 Ac.
 C = 0.95
 Q₅ = 5.4 cfs
 Q₁₀₀ = 9.4 cfs

DRAINAGE AREA = 1.4 Ac.
 C = 0.95
 Q₅ = 6.1 cfs
 Q₁₀₀ = 9.8 cfs

DRAINAGE AREA = 31.0 Ac.
 C = 0.65
 Q₂ = 22 cfs
 Q₁₀₀ = 64 cfs



- LEGEND**
- (LP) - LIGHT POLE
 - (PP) - POWER POLE
 - (HLP) - HIGH LINE POLE
 - (GW) - GUY WIRE
 - (SMB) - SOUTHWESTERN BELL POLE
 - (GP) - GUARD POST
 - (WM) - WATER METER
 - (GM) - GAS METER
 - (SIGN) - SIGN

BENCHMARK
 City Disc N.E. Corner RCBC
 at Pinecrest and Orme.
 Elev = 151.61

ALL EXCESS FLOW TO BE
 CARRIED OVERLAND WITHIN
 DRAINAGE ESM'T TO DRY
 CREEK.